



LABOR SITUATION

Office of Research

Danté Bartolomeo, Interim Commissioner

FOR IMMEDIATE RELEASE

May 2021 Data

CT Unemployment Rate = 7.7%

US Unemployment Rate = 5.8%

CT industry employment rises 7,800 as statewide jobless rate declines to 7.7% in May

WETHERSFIELD, June 22, 2021 – Nonfarm industry employment in Connecticut rose 7,800 (0.5%) in May 2021 to 1,589,100 (seasonally adjusted) as statewide payroll jobs are now 151,600 (10.6%) positions above year-ago monthly levels. Plus, April’s preliminary job gain of 500 (0.03%) was revised higher to 1,200 (0.08%). Connecticut has now recovered 63.3% (185,200) of the 292,400 positions lost in the March and April 2020 Lockdown, thirteen months ago. Monthly industry job estimates are derived from the workplace survey directed by the U.S. Bureau of Labor Statistics (BLS) for the Current Employment Statistics (CES) program.

“Jobs are up more than 18,000 so far in 2021, and the unemployment rate is lower than it was more than five years after the start of the great recession of 2008,” said Patrick Flaherty, Director of the Office of Research at the Connecticut Department of Labor. “Month-to-month changes are difficult to interpret this year due to unusual seasonal patterns, but the overall trends are positive.”

Private sector employment rose by 8,600 (0.6%) to 1,367,200 in May 2021 and is now higher by 141,000 jobs (11.5%) from the same month a year ago. The **government supersector**, however, dropped 800 jobs (-0.4%) last month to a level of 221,900 but is now higher by 10,600 (5.0%) positions since May 2020. The **government supersector** includes all federal, state, and local employment, including public education and Native American casino employment located on tribal reservation land.

Four of the ten major industry *supersectors* had employment increases while six decreased in May 2021.

Four increasing industry *supersectors* included:

Increasing Sectors			
Industry Sector	Amount of Increase	Percent Change	May 2021 Employment
Education & Health Services	+5,300	1.6%	329,800
Professional & Business Services	+2,200	1.1%	208,500
Leisure & Hospitality	+1,900	1.5%	127,400
Manufacturing	+700	0.5%	152,300

Six industry *supersectors* put up May 2021 (P) declines.

Declining Sectors			
Industry Sector	Amount of Decrease	Percent Change	May 2021 Employment
Government	-800	-0.4%	221,900
Construction & Mining	-600	-1.0%	58,100
Financial Activities	-400	-0.3%	118,100
Other Services	-300	-0.5%	58,900
Information	-100	-0.4%	27,900
Trade, Transportation, & Utilities	-100	-0.03%	286,200

Connecticut Labor Market Areas (LMAs): Four of the six Connecticut **LMAs** seasonally adjusted by BLS had employment gains in May 2021, while the **Waterbury LMA** (-0.2%, 64,800) had a small -100 decline and the **Norwich–New London–Westerly LMA** (114,400) was unchanged. The **New Haven LMA** (0.4%, 285,200) posted the largest monthly regional increase, adding 1,200 jobs. The **Danbury LMA** (0.4%, 72,700) and the **Hartford LMA** (0.1%, 548,600) each added 300 positions while the **Bridgeport-Stamford-Norwalk LMA** (0.1%, 374,900) also added 200 jobs.

Note: The six major Connecticut LMAs are estimated independently from the statewide data by the BLS and cover more than 90% of the nonfarm employment in the state. Thus, estimates will not fully sum to the statewide total.

Hours and Earnings: The May 2021 **private sector** workweek, not seasonally adjusted, averaged 34.5 hours, down two-tenths of an hour from May 2020 (-0.6%). Average hourly earnings at \$34.01, not seasonally adjusted, were lower by \$0.51 (-1.5%) from the May 2020 estimate of \$34.52. Average May 2021 private sector weekly wages averaged \$1,173.35, down \$24.49 from a year ago (-2.0%). The Consumer Price Index for All Urban Consumers (CPI-U, U.S. City Average, not seasonally adjusted) in May 2021 was up 5.0% from May 2020. *Current all-employee private sector hours and earnings estimates can be volatile due to fluctuating sample responses.*

Labor Force Data (residential household survey)

The official May 2021 unemployment rate for Connecticut was estimated by the BLS Local Area Unemployment Statistics program (LAUS) to be **7.7%** (seasonally adjusted), lower by 0.4 percentage points from the April 2021 level of 8.1%. The Connecticut unemployment rate was 11.4% in May 2020 – last year’s peak level. The U.S. jobless rate in May 2021 was 5.8%, down three-tenths of a percentage point from the April 2021 rate of 6.1% and down significantly from the 13.3% U.S. unemployment rate a year ago.

Data users must be cautious about trying to compare or reconcile UI claims data with the official unemployment figures derived from the household survey. For additional insight into the Connecticut labor market during the COVID-19 pandemic please see the analysis linked here: <https://www1.ctdol.state.ct.us/lmi/claimsdata.asp> Please note that there are conceptual, coverage, and scope differences between the two data sources.

Unemployment claims for first-time filers in Connecticut were an average of 9,346 per week in May 2021, up 4,737 (102.8%) from the April 2021 (4,609) level but much lower by 22,246 claims (-70.4%) from the average weekly count of 31,592 in May 2020.

*The nonfarm employment estimate, derived from a survey of businesses, is a measure of jobs in the state; the unemployment rate and labor force estimates are based on a household survey, and measure the work status of people who live in Connecticut. Overall, as the national and state economies recover, volatility in monthly numbers can be expected. **Job and employment estimates are best understood in the context of their movement over several months rather than observed changes in a single month’s value.***

*Next Connecticut Labor Situation release: Thursday, July 15, 2021
(preliminary June 2021 data)*

Contact:
Communications, CT Department of Labor
CTDOL.SocialMedia@ct.gov

Labor Market Information is available at: www.ctworkforce.info
200 Folly Brook Boulevard, Wethersfield, CT 06109-1114 www.ct.gov/dol
An Equal Opportunity/Affirmative Action Employer

NONFARM EMPLOYMENT

Jobs - by Place of Work

CONNECTICUT AND THE UNITED STATES - Seasonally Adjusted

	May 2021 P	April 2021 R	March 2021	February 2021	May 2020	Over Month Change	Over Month Rate	Over Year Change	Over Year Rate
CONNECTICUT	1,589,100	1,581,300	1,580,100	1,574,900	1,437,500	7,800	0.5%	151,600	10.5%
Total Private	1,367,200	1,358,600	1,358,500	1,354,000	1,226,200	8,600	0.6%	141,000	11.5%
Goods Producing Industries									
Mining	500	500	500	500	500	0	0.0%	0	0.0%
Construction	57,600	58,200	57,000	56,000	53,300	-600	-1.0%	4,300	8.1%
Manufacturing	152,300	151,600	152,200	152,100	150,600	700	0.5%	1,700	1.1%
Durable Goods	120,300	119,500	120,100	120,200	120,100	800	0.7%	200	0.2%
Nondurable Goods	32,000	32,100	32,100	31,900	30,500	-100	-0.3%	1,500	4.9%
Service Providing Industries									
Trade, Transportation & Utilities	286,200	286,300	288,800	291,400	246,900	-100	0.0%	39,300	15.9%
Wholesale	54,200	54,000	54,300	54,700	53,500	200	0.4%	700	1.3%
Retail	164,400	165,800	167,100	168,900	138,300	-1,400	-0.8%	26,100	18.9%
Transp, Warehousing & Utilities	67,600	66,500	67,400	67,800	55,100	1,100	1.7%	12,500	22.7%
Information	27,900	28,000	27,600	27,700	28,400	-100	-0.4%	-500	-1.8%
Financial Activities	118,100	118,500	119,000	118,600	119,000	-400	-0.3%	-900	-0.8%
Finance & Insurance	100,200	100,400	100,600	100,400	101,100	-200	-0.2%	-900	-0.9%
Real Estate, Rental & Leasing	17,900	18,100	18,400	18,200	17,900	-200	-1.1%	0	0.0%
Professional & Business Services	208,500	206,300	202,700	205,600	198,400	2,200	1.1%	10,100	5.1%
Prof, Scientific & Tech Services	94,400	93,800	92,000	91,600	91,600	600	0.6%	2,800	3.1%
Management of Companies	32,300	32,300	32,100	32,100	31,100	0	0.0%	1,200	3.9%
Admn & Support & Waste Mgt Serv	81,800	80,200	78,600	81,900	75,700	1,600	2.0%	6,100	8.1%
Educational & Health Services	329,800	324,500	328,800	322,900	306,900	5,300	1.6%	22,900	7.5%
Educational Services	66,000	62,500	67,000	62,300	59,800	3,500	5.6%	6,200	10.4%
Health Care & Social Assistance	263,800	262,000	261,800	260,600	247,100	1,800	0.7%	16,700	6.8%
Leisure and Hospitality	127,400	125,500	123,500	121,000	76,400	1,900	1.5%	51,000	66.8%
Arts, Entertainment & Recreation	20,700	20,800	20,300	19,500	11,900	-100	-0.5%	8,800	73.9%
Accommodation & Food Services	106,700	104,700	103,200	101,500	64,500	2,000	1.9%	42,200	65.4%
Other Services	58,900	59,200	58,400	58,200	45,800	-300	-0.5%	13,100	28.6%
Government**	221,900	222,700	221,600	220,900	211,300	-800	-0.4%	10,600	5.0%
UNITED STATES	144,894,000	144,335,000	144,057,000	143,272,000	132,994,000	559,000	0.4%	11,900,000	8.9%

LABOR MARKET AREAS (LMA)

Labor Market Area employment estimates are made independently of Statewide estimates.

Seasonally Adjusted data	May 2021 P	April 2021 R	March 2021	February 2021	May 2020	Over Month Change	Over Month Rate	Over Year Change	Over Year Rate
Bridgeport-Stamford-Norwalk	374,900	374,700	374,300	372,800	338,200	200	0.1%	36,700	10.9%
Danbury	72,700	72,400	72,000	71,200	64,000	300	0.4%	8,700	13.6%
Hartford	548,600	548,300	548,400	548,700	505,600	300	0.1%	43,000	8.5%
New Haven	285,200	284,000	287,400	281,800	256,000	1,200	0.4%	29,200	11.4%
Norwich-New London-Westerly, RI	114,400	114,400	115,200	114,400	96,900	0	0.0%	17,500	18.1%
Waterbury	64,800	64,900	65,100	65,000	57,500	-100	-0.2%	7,300	12.7%
<i>Not Seasonally Adjusted data (Non-Classified Areas, State estimated not BLS)</i>									
Enfield	41,700	41,400	42,100	41,500	38,800	300	0.7%	2,900	7.5%
Torrington-Northwest	30,700	29,900	30,200	29,900	28,700	800	2.7%	2,000	7.0%
Danielson-Northeast	25,600	25,200	25,600	25,300	24,000	400	1.6%	1,600	6.7%

* Less than 0.05%

** Includes Native American tribal government employment

P = Preliminary

R = Revised

Starting with March, 2011, our monthly statewide and major LMA nonfarm job estimates have been taken over by the US Department of Labor Bureau of Labor Statistics. This is the final phase of transition in this program, which began in 2008. As a result of changes in the estimation procedures, you are likely to see more variability in month-to-month estimates of job counts. Caution should be used in interpreting any single month's estimate. The data are best interpreted to identify trends and cycles over several months and quarters. If you have any questions about these changes, please email us at:

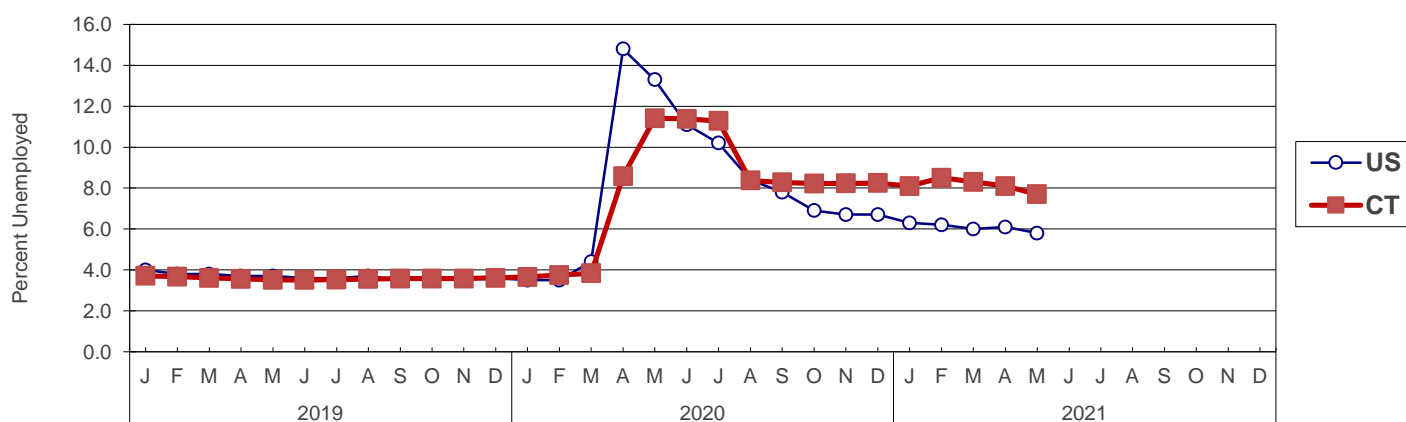
UNEMPLOYMENT

Persons Unemployed - by Place of Residence

CONNECTICUT AND THE UNITED STATES - Seasonally Adjusted

	May 2021 P		May 2020 R		Change		Apr 2021 R	
	Number	Rate	Number	Rate	Number	Points	Number	Rate
CONNECTICUT								
Unemployed	134,900	7.7	215,400	11.4	-80,500	-3.7	140,400	8.1
Labor Force	1,751,300		1,886,500		-135,200		1,741,600	
UNITED STATES								
Unemployed	9,316,000	5.8	20,975,000	13.3	-11,659,000	-7.5	9,812,000	6.1
Labor Force	160,935,000		158,200,000		2,735,000		160,988,000	

U.S. AND CONNECTICUT UNEMPLOYMENT RATES - Seasonally Adjusted 2019 - 2021



LABOR MARKET AREAS - Not Seasonally Adjusted

	May 2021 P		May 2020 R		Change		Apr 2021 R	
	Number	Rate	Number	Rate	Number	Points	Number	Rate
Bridgeport-Stamford	25,200	6.0	53,700	11.8	-28,500	-5.8	31,500	7.5
Danbury	4,700	4.9	11,400	11.0	-6,700	-6.1	6,300	6.5
Danielson-Northeast*	2,100	5.5	5,000	11.5	-2,900	-6.0	2,700	6.9
Worcester NECTA	2,100	5.5	4,800	11.7	-2,700	-6.2	2,600	6.9
Hampton	100	4.6	200	8.7	-100	-4.1	100	5.8
Enfield	2,400	5.2	5,300	10.9	-2,900	-5.7	3,100	6.8
Hartford	34,700	6.1	69,700	11.1	-35,000	-5.0	43,900	7.6
New Haven	17,500	5.7	34,200	10.4	-16,700	-4.7	21,900	7.1
Norwich-New London	8,300	6.6	23,700	17.5	-15,400	-10.9	10,300	8.2
Torrington-Northwest**	2,300	5.4	4,400	9.4	-2,100	-4.0	3,000	7.2
Torrington NECTA	1,500	6.5	2,900	11.0	-1,400	-4.5	1,900	8.4
Litchfield	700	4.0	1,500	7.3	-800	-3.3	1,000	5.6
Waterbury	7,800	7.5	14,000	12.7	-6,200	-5.2	9,500	9.1
CONNECTICUT	104,200	6.0	219,100	11.6	-114,900	-5.6	131,400	7.5
UNITED STATES	8,829,000	5.5	20,514,000	13.0	-11,685,000	-7.5	9,220,000	5.7

P = Preliminary

R = Revised

Labor force data included in this publication are developed in cooperation with the U.S. Department of Labor, Bureau of Labor Statistics.

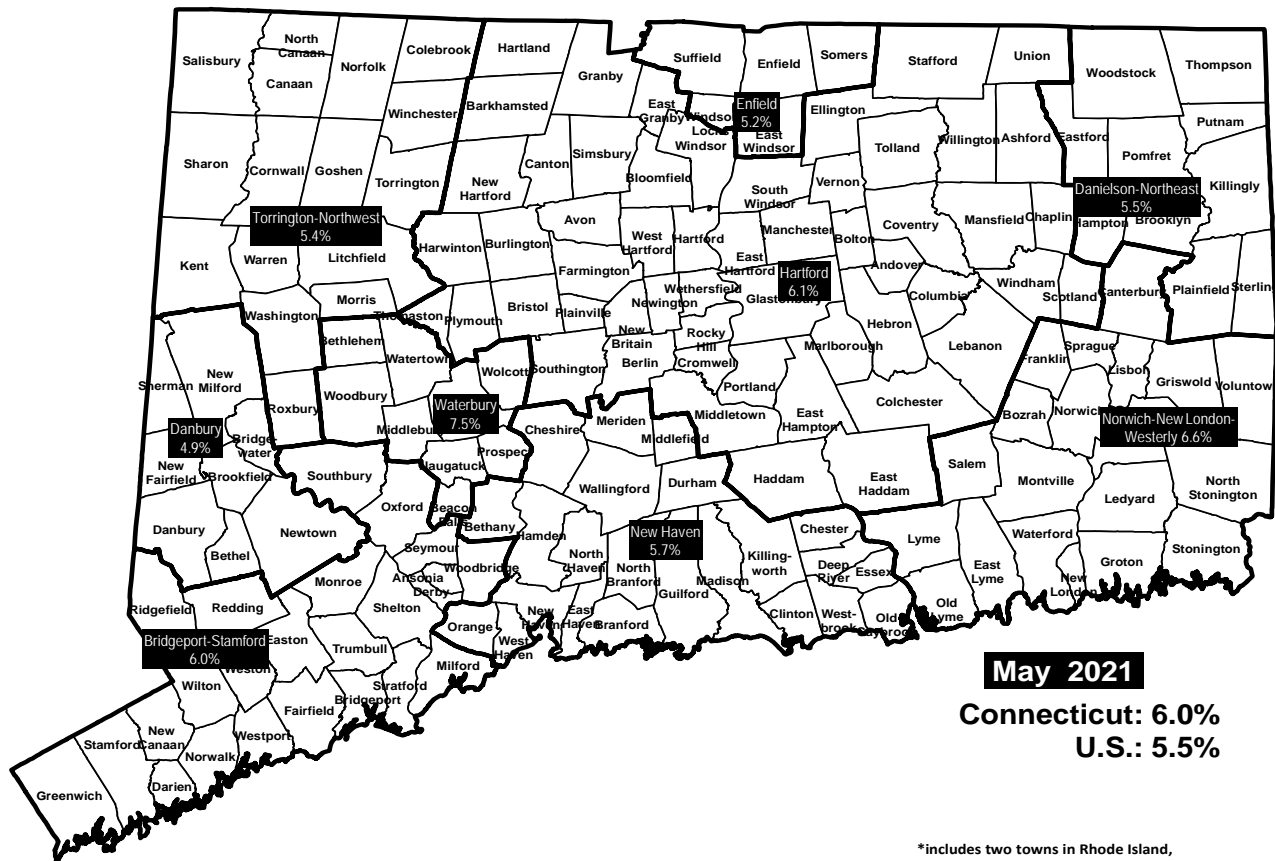
* Worcester NECTA, CT part and Hampton LMA are combined

** Torrington Metropolitan NECTA and Litchfield LMA are combined

UNEMPLOYMENT RATES

Not Seasonally Adjusted

LABOR MARKET AREAS



May 2021
Connecticut: 6.0%
U.S.: 5.5%

*includes two towns in Rhode Island, Hopkinton and Westerly.

HOURS AND EARNINGS

CONNECTICUT Statewide - Not Seasonally Adjusted

	Average Weekly Earnings				Average Weekly Hours				Average Hourly Earnings			
	May 2021 P	May 2020	Change over Yr.	April 2021 R	May 2021 P	May 2020	Change over Yr.	April 2021 R	May 2021 P	May 2020	Change over Yr.	April 2021 R
Private Industry All Employees	\$1,173.35	\$1,197.84	-\$24.49	\$1,149.17	34.5	34.7	-0.2	34.1	\$34.01	\$34.52	-\$0.51	\$33.70
Manufacturing* Production Workers	\$1,116.76	\$1,188.77	-\$72.01	\$1,115.60	39.7	40.6	-0.9	39.9	\$28.13	\$29.28	-\$1.15	\$27.96

* Production worker data have been impacted by the loss of a large, high-paying manufacturer from the monthly sample.

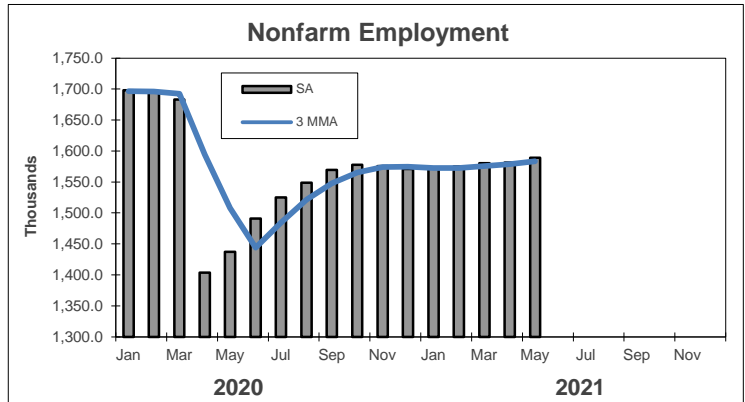
P = Preliminary R = Revised

Hours and earnings are also developed for the state's major industry sectors and Labor Market Areas. They can be found on our website at: www1.ctdol.state.ct.us/lmi

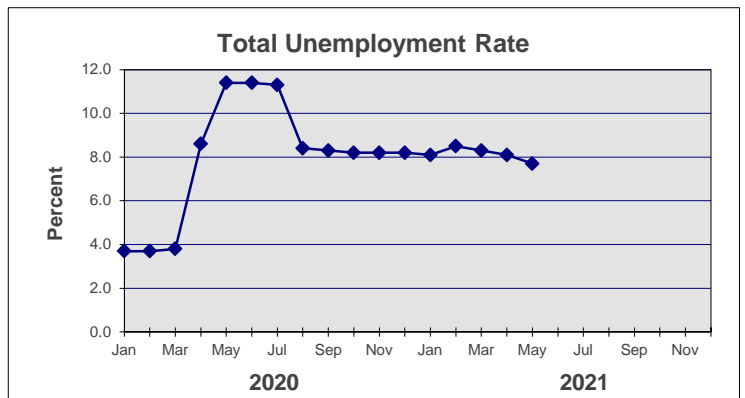
TRENDS

Seasonally Adjusted

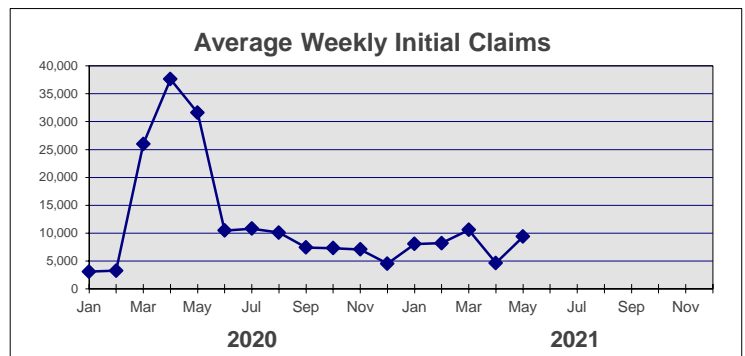
	Nonfarm Employment (000s)	Total Unemployment Rate
2020		
Jan	1,698.0	3.7
Feb	1,696.3	3.7
Mar	1,683.3	3.8
Apr	1,403.9	8.6
May	1,437.5	11.4
Jun	1,490.9	11.4
Jul	1,525.0	11.3
Aug	1,549.0	8.4
Sep	1,569.2	8.3
Oct	1,577.7	8.2
Nov	1,575.4	8.2
Dec	1,570.8	8.2



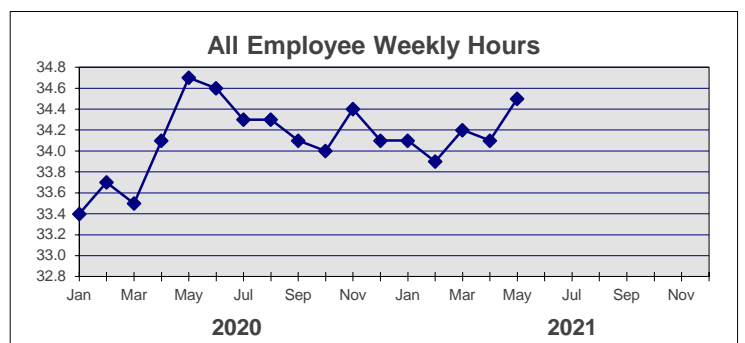
2021		
Jan	1,571.8	8.1
Feb	1,574.9	8.5
Mar	1,580.1	8.3
Apr	1,581.3 R	8.1 R
May	1,589.1 P	7.7 P
Jun		
Jul		
Aug		
Sep		
Oct		
Nov		
Dec		



	Avg Weekly Initial Claims	All Employee Weekly Hours*
2020		
Jan	3,079	33.4
Feb	3,243	33.7
Mar	25,989	33.5
Apr	37,632	34.1
May	31,592	34.7
Jun	10,446	34.6
Jul	10,794	34.3
Aug	10,073	34.3
Sep	7,408	34.1
Oct	7,295	34.0
Nov	7,072	34.4
Dec	4,493	34.1



2021		
Jan	8,040	34.1
Feb	8,184	33.9
Mar	10,553	34.2
Apr	4,609	34.1 R
May	9,346	34.5 P
Jun		
Jul		
Aug		
Sep		
Oct		
Nov		
Dec		



* Not seasonally adjusted

P = Preliminary

R = Revised

** Labor-management dispute