



LABOR SITUATION

Office of Research

Danté Bartolomeo, Commissioner

FOR IMMEDIATE RELEASE

August 2022 Data

CT Unemployment Rate = 4.1%

US Unemployment Rate = 3.7%

Connecticut payrolls continue to add jobs (+2,900) as jobless rate rises in August 2022

WETHERSFIELD, September 15, 2022 – Connecticut nonfarm industry payrolls gained 2,900 positions (0.2%) to 1,663,900 in August 2022 while the state’s unemployment rate rose to 4.1%, increasing four-tenths of a percentage point over the month as the labor force expanded by 5,700 (preliminary data, seasonally adjusted). Connecticut’s nonagricultural employment is now 39,200 (2.4%) positions higher than in August 2021. This is the eighth straight monthly job gain in 2022. The Constitution State has now recovered 87.9% (254,300) of the 289,400 nonfarm positions lost in the March/April 2020 COVID lockdown. The originally released July 2022 job gain of 6,500 (0.4%) was revised higher by 2,200 positions to an 8,700 monthly gain (0.5%). This release presents labor statistics derived from two surveys formulated by U.S. Bureau of Labor Statistics (BLS) in cooperation with the states.

“August continues a string of solid growth with nearly every sector adding jobs,” said Patrick Flaherty, Director of the Office of Research at the Connecticut Department of Labor. “The increase in the labor force caused the unemployment rate to rise as labor force entrants often start out unemployed as they look for work. Data on job openings suggests they will be successful.”

Connecticut’s private sector employment increased 5,100 jobs (0.4%) in August 2022 to 1,438,800 and is higher by 37,500 positions (2.7%) from the August 2021 level. The state’s private sector is 91.2% recovered from the April 2020 COVID employment low. The **government supersector** was lower last month, declining 2,200 jobs (-1.0%) to a level of 225,100. This is 1,700 positions (0.8%) above the August 2021 aggregated statewide government levels. The public sector is now only 50.8% recovered from the COVID lockdown. The government *supersector* in Connecticut includes all federal, state, local, and tribal government employment, including public education and Native American casino employment located on reservations.

Seven of the ten major industry *supersectors* increased employment, while two declined, and the Financial Activities went unchanged in August 2022.

The seven Connecticut industry *supersectors* that gained jobs in August 2022 (plus unchanged):

Increasing Sectors			
Industry Sector	Amount of Increase	Percent Change	August 2022 Employment
Professional & Business Services	+1,600	0.7%	221,500
Education & Health Services	+1,000	0.3%	339,100
Manufacturing	+900	0.6%	160,600
Construction & Mining	+700	1.1%	62,200
Information	+600	2.0%	30,700
Trade, Transportation, & Utilities	+400	0.1%	297,900
Other Services	+200	0.3%	60,500
Financial Activities	unchanged	0.0%	118,600

The two industry *supersectors* that declined in jobs in August 2022:

Decreasing Sectors			
Industry Sector	Amount of Decrease	Percent Change	August 2022 Employment
Government	-2,200	-1.0%	225,100
Leisure & Hospitality	-300	-0.2%	147,700

Connecticut Labor Market Areas (LMAs): All six of the six larger Connecticut **LMAs**, that are seasonally adjusted by the BLS, put forth employment gains in August 2022. The **Bridgeport-Stamford-Norwalk LMA** (1.2%, 398,100) added a strong 4,600 positions to lead all regions this month in numerical and percentage gains. The **Norwich-New London-Westerly LMA** (0.7%, 121,000) and the **Hartford LMA** (0.2%, 570,600) each added 900 positions while the **Waterbury LMA** (0.6%, 66,200) and the **Danbury LMA** (0.5%, 75,900) each added 400 jobs. The **New Haven LMA** (0.1%, 293,800) also contributed 200 new payrolls.

Note: The six major Connecticut LMAs are independently estimated from the statewide data by the BLS and cover around 90% of the nonfarm employment in the state. Thus, estimates will not exactly sum to the statewide total.

Hours and Earnings: The August 2022 **private sector** workweek, *not seasonally adjusted*, averaged 33.7 hours. This is lower by six-tenths of an hour (-1.8%) from the August 2021 estimate. Average hourly earnings at \$34.65, not seasonally adjusted, were up by \$0.72 (2.1%) from the August 2021 estimate of \$33.93. The resulting August 2022 private sector weekly wage averaged \$1,167.71, higher by \$3.91 from a year ago (0.3%, \$1,163.80). The Consumer Price Index for All Urban Consumers (CPI-U, U.S. City Average, not seasonally adjusted) in August 2022 was up 8.3% from a year ago. *Current all-employee private sector hours and earnings estimates can be volatile due to fluctuating sample responses.*

The BLS released an early notice on benchmark revisions that suggests Connecticut's March 2022 employment level will be revised up by 15,100 (0.9% not seasonally adjusted) when the benchmark revisions are released in March 2023. The BLS notice can be found here:

<https://www.bls.gov/sae/publications/preliminary-benchmark-announcement.htm>.

Labor Force Data (residential household survey)

The August 2022 unemployment rate for Connecticut was estimated by the BLS Local Area Unemployment Statistics program (LAUS) to be **4.1%** (seasonally adjusted), higher by four-tenths of a percentage point from the July 2022 level of 3.7%. The Connecticut unemployment rate was 6.1% in August 2021. The jobless rate was 3.4% in February 2020 (pre-COVID). The U.S. unemployment rate for August 2022 was 3.7%, up two-tenths of a percent from July 2022 but down from the August 2021 jobless rate of 5.2%. Connecticut's **Labor Force** expanded by 5,700 for the seventh gain this year.

Unemployment claims for first-time filers (seasonally adjusted) in Connecticut were an average of 5,915 per week in August 2022, down by 4,209 (-41.6%) from the July 2022 (10,124) level and higher by 1,884 (46.7%) than the average weekly count of 4,031 in August 2021. Average weekly initial unemployment claims in June 2022, July 2022, and August 2022 were affected by the transition to ReEmployCT, Connecticut's modernized unemployment insurance system. Criminals continue to use stolen identities to try to file claims. Connecticut has multiple verification processes in place to ensure that proper unemployment benefit payments are made.

*The nonfarm employment estimate, derived from a survey of businesses, is a measure of jobs in the state; the unemployment rate and labor force estimates are based on a household survey, and measure the work status of people who live in Connecticut. Overall, as the national and state economies recover, volatility in monthly numbers can be expected. **Job and employment estimates are best understood in the context of their movement over several months rather than observed changes in a single month's value.***

Next Connecticut Labor Situation release: Thursday, October 20, 2022

(Preliminary September 2022 data)

Contact:
Communications, CT Department of Labor
CTDOL.SocialMedia@ct.gov

Labor Market Information is available at: www.ctworkforce.info
200 Folly Brook Boulevard, Wethersfield, CT 06109-1114 www.ct.gov/dol
An Equal Opportunity/Affirmative Action Employer

NONFARM EMPLOYMENT

Jobs - by Place of Work

CONNECTICUT AND THE UNITED STATES - Seasonally Adjusted

	August 2022 P	July 2022 R	June 2022	May 2022	August 2021	Over Month Change	Over Month Rate	Over Year Change	Over Year Rate
CONNECTICUT	1,663,900	1,661,000	1,652,300	1,649,300	1,624,700	2,900	0.2%	39,200	2.4%
Total Private	1,438,800	1,433,700	1,428,500	1,426,600	1,401,300	5,100	0.4%	37,500	2.7%
Goods Producing Industries									
Mining	500	500	500	500	500	0	0.0%	0	0.0%
Construction	61,700	61,000	59,200	61,100	59,200	700	1.1%	2,500	4.2%
Manufacturing	160,600	159,700	159,000	159,200	153,200	900	0.6%	7,400	4.8%
Durable Goods	124,900	124,000	123,500	123,700	119,800	900	0.7%	5,100	4.3%
Nondurable Goods	35,700	35,700	35,500	35,500	33,400	0	0.0%	2,300	6.9%
Service Providing Industries									
Trade, Transportation & Utilities	297,900	297,500	296,800	295,600	291,900	400	0.1%	6,000	2.1%
Wholesale	60,800	60,800	60,600	60,100	57,700	0	0.0%	3,100	5.4%
Retail	169,000	168,300	167,900	167,700	168,300	700	0.4%	700	0.4%
Transp, Warehousing & Utilities	68,100	68,400	68,300	67,800	65,900	-300	-0.4%	2,200	3.3%
Information	30,700	30,100	30,200	30,400	30,400	600	2.0%	300	1.0%
Financial Activities	118,600	118,600	118,800	119,200	117,100	0	0.0%	1,500	1.3%
Finance & Insurance	99,100	99,100	99,400	99,700	98,500	0	0.0%	600	0.6%
Real Estate, Rental & Leasing	19,500	19,500	19,400	19,500	18,600	0	0.0%	900	4.8%
Professional & Business Services	221,500	219,900	218,500	216,900	213,700	1,600	0.7%	7,800	3.6%
Prof, Scientific & Tech Services	99,000	97,600	96,400	96,400	96,000	1,400	1.4%	3,000	3.1%
Management of Companies	30,900	31,000	30,500	30,300	30,400	-100	-0.3%	500	1.6%
Admn & Support & Waste Mgt Serv	91,600	91,300	91,600	90,200	87,300	300	0.3%	4,300	4.9%
Educational & Health Services	339,100	338,100	337,100	335,100	334,900	1,000	0.3%	4,200	1.3%
Educational Services	69,200	68,200	67,800	67,600	65,900	1,000	1.5%	3,300	5.0%
Health Care & Social Assistance	269,900	269,900	269,300	267,500	269,000	0	0.0%	900	0.3%
Leisure and Hospitality	147,700	148,000	148,100	147,600	141,600	-300	-0.2%	6,100	4.3%
Arts, Entertainment & Recreation	24,500	25,000	25,900	26,200	24,900	-500	-2.0%	-400	-1.6%
Accommodation & Food Services	123,200	123,000	122,200	121,400	116,700	200	0.2%	6,500	5.6%
Other Services	60,500	60,300	60,300	61,000	58,800	200	0.3%	1,700	2.9%
Government**	225,100	227,300	223,800	222,700	223,400	-2,200	-1.0%	1,700	0.8%
UNITED STATES	152,744,000	152,429,000	151,903,000	151,610,000	146,904,000	315,000	0.2%	5,840,000	4.0%

LABOR MARKET AREAS (LMA)

Labor Market Area employment estimates are made independently of Statewide estimates.

Seasonally Adjusted data	August 2022 P	July 2022 R	June 2022	May 2022	August 2021	Over Month Change	Over Month Rate	Over Year Change	Over Year Rate
Bridgeport-Stamford-Norwalk	398,100	393,500	392,200	392,800	388,800	4,600	1.2%	9,300	2.4%
Danbury	75,900	75,500	74,600	74,300	74,600	400	0.5%	1,300	1.7%
Hartford	570,600	569,700	569,400	568,000	561,100	900	0.2%	9,500	1.7%
New Haven	293,800	293,600	291,800	292,000	289,100	200	0.1%	4,700	1.6%
Norwich-New London-Westerly, RI	121,000	120,100	120,300	120,800	117,900	900	0.7%	3,100	2.6%
Waterbury	66,200	65,800	66,000	65,400	65,100	400	0.6%	1,100	1.7%
<i>Not Seasonally Adjusted data (Non-Classified Areas, State estimated - not BLS)</i>									
Enfield	42,200	42,100	42,200	41,700	41,700	100	0.2%	500	1.2%
Torrington-Northwest	33,000	33,400	33,000	32,200	32,100	-400	-1.2%	900	2.8%
Danielson-Northeast	27,200	27,100	27,100	26,800	26,600	100	0.4%	600	2.3%

* Less than 0.05% ** Includes Native American tribal government employment

P = Preliminary

R = Revised

Starting with March, 2011, our monthly statewide and major LMA nonfarm job estimates have been taken over by the US Department of Labor Bureau of Labor Statistics. This is the final phase of transition in this program, which began in 2008. As a result of changes in the estimation procedures, you are likely to see more variability in month-to-month estimates of job counts. Caution should be used in interpreting any single month's estimate. The data are best interpreted to identify trends and cycles over several months and quarters. If you have any questions about these changes, please email us at: dol.lmi@ct.gov. Danbury and Waterbury LMA's are now back to being seasonally adjusted.

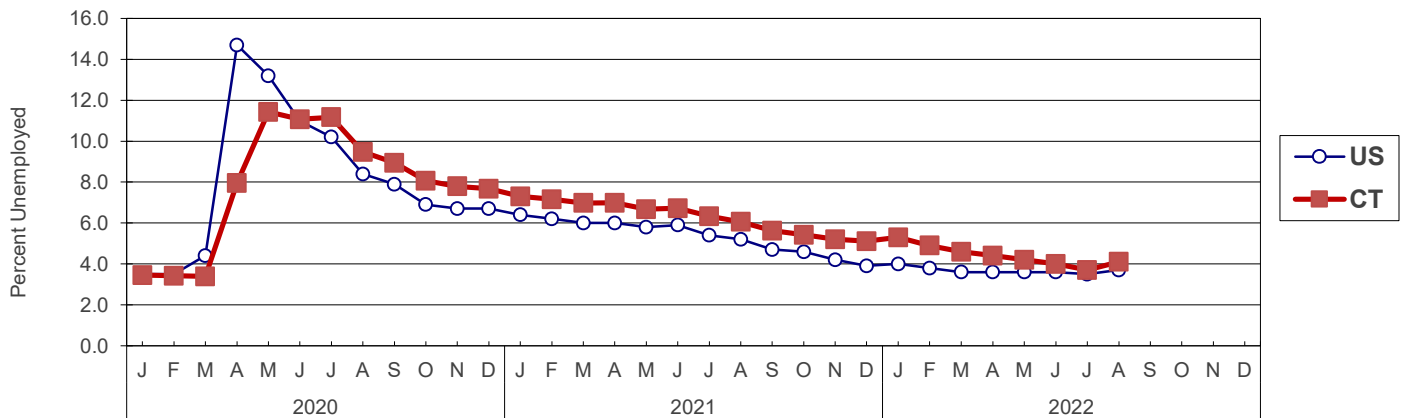
UNEMPLOYMENT

Persons Unemployed - by Place of Residence

CONNECTICUT AND THE UNITED STATES - Seasonally Adjusted

	Aug 2022 P		Aug 2021 R		Change		Jul 2022 R	
	Number	Rate	Number	Rate	Number	Points	Number	Rate
CONNECTICUT								
Unemployed	77,800	4.1	112,700	6.1	-34,900	-2.0	71,200	3.7
Labor Force	1,905,700		1,861,400		44,300		1,900,000	
UNITED STATES								
Unemployed	6,014,000	3.7	8,339,000	5.2	-2,325,000	-1.5	5,670,000	3.5
Labor Force	164,746,000		161,505,000		3,241,000		163,960,000	

U.S. AND CONNECTICUT UNEMPLOYMENT RATES - Seasonally Adjusted 2020 - 2022



LABOR MARKET AREAS - Not Seasonally Adjusted

	Aug 2022 P		Aug 2021 R		Change		Jul 2022 R	
	Number	Rate	Number	Rate	Number	Points	Number	Rate
Bridgeport-Stamford	20,600	4.4	28,300	6.2	-7,700	-1.8	21,200	4.4
Danbury	3,900	3.6	5,300	5.1	-1,400	-1.5	4,000	3.7
Danielson-Northeast*	1,800	4.0	2,400	5.7	-600	-1.7	1,800	4.0
Worcester NECTA	1,700	4.1	2,300	5.7	-600	-1.6	1,700	4.1
Hampton	100	2.9	100	4.4	0	-1.5	100	3.1
Enfield	1,900	3.8	2,600	5.4	-700	-1.6	1,900	3.8
Hartford	27,100	4.4	37,900	6.3	-10,800	-1.9	27,700	4.4
New Haven	13,700	4.1	19,200	5.9	-5,500	-1.8	14,200	4.2
Norwich-New London	6,200	4.5	9,100	6.6	-2,900	-2.1	6,300	4.5
Torrington-Northwest**	1,800	3.8	2,500	5.3	-700	-1.5	1,900	3.9
Torrington NECTA	1,200	4.7	1,700	6.5	-500	-1.8	1,200	4.7
Litchfield	600	2.8	800	3.9	-200	-1.1	600	2.9
Waterbury	6,100	5.5	8,300	7.6	-2,200	-2.1	6,100	5.5
CONNECTICUT	82,500	4.3	114,700	6.1	-32,200	-1.8	84,500	4.4
UNITED STATES	6,256,000	3.8	8,556,000	5.3	-2,300,000	-1.5	6,255,000	3.8

P = Preliminary

R = Revised

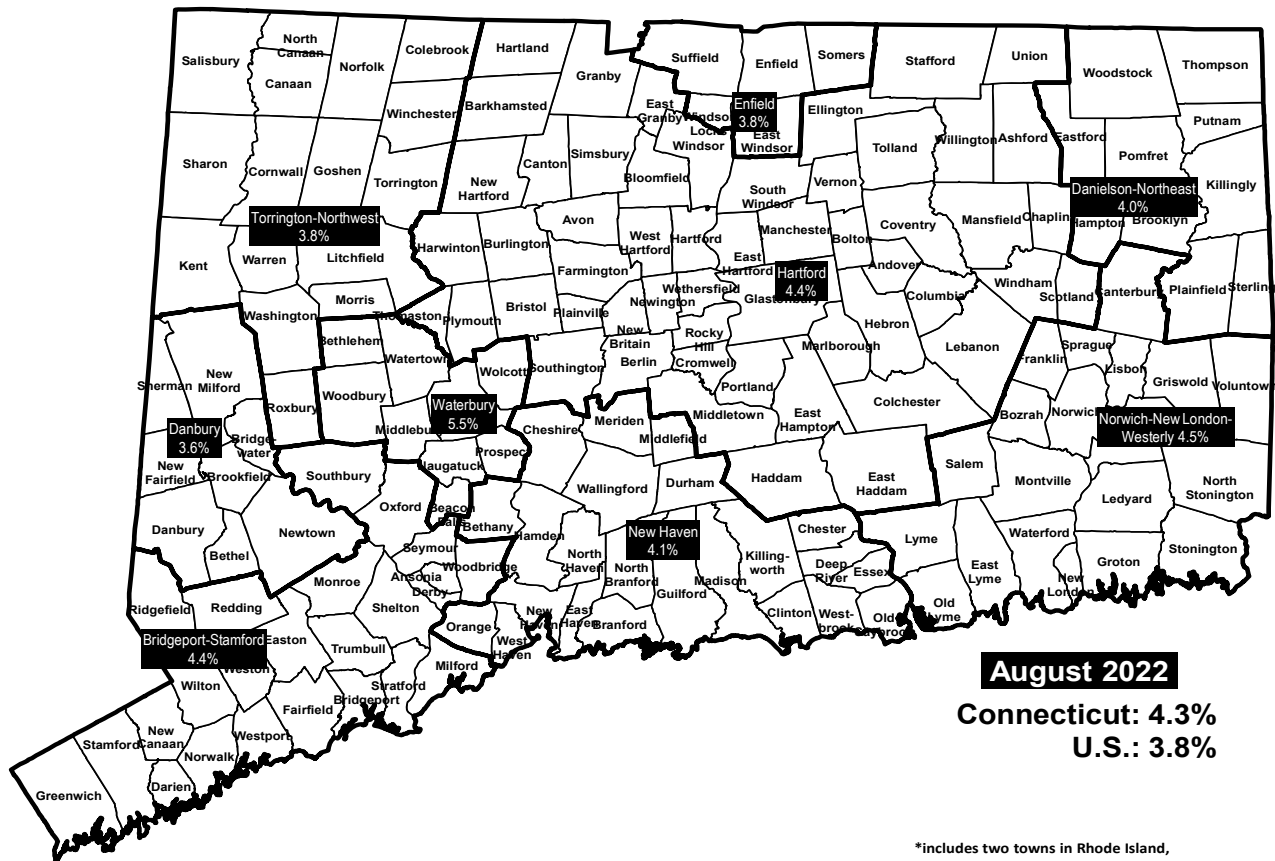
Labor force data included in this publication are developed in cooperation with the U.S. Department of Labor, Bureau of Labor Statistics.

* Worcester NECTA, CT part and Hampton LMA are combined ** Torrington Micropolitan NECTA and Litchfield LMA are combined

UNEMPLOYMENT RATES

Not Seasonally Adjusted

LABOR MARKET AREAS



HOURS AND EARNINGS

CONNECTICUT Statewide - Not Seasonally Adjusted

	Average Weekly Earnings				Average Weekly Hours				Average Hourly Earnings			
	Aug. 2022 P	Aug. 2021	Change over Yr.	Jul. 2022 R	Aug. 2022 P	Aug. 2021	Change over Yr.	Jul. 2022 R	Aug. 2022 P	Aug. 2021	Change over Yr.	Jul. 2022 R
Private Industry All Employees	\$1,167.71	\$1,163.80	\$3.91	\$1,162.22	33.7	34.3	-0.6	33.6	\$34.65	\$33.93	\$0.72	\$34.59
Manufacturing* Production Workers	\$1,141.70	\$1,087.32	\$54.38	\$1,163.58	40.5	39.0	1.5	41.0	\$28.19	\$27.88	\$0.31	\$28.38

* Production worker data have been impacted by the loss of a large, high-paying manufacturer from the monthly sample.

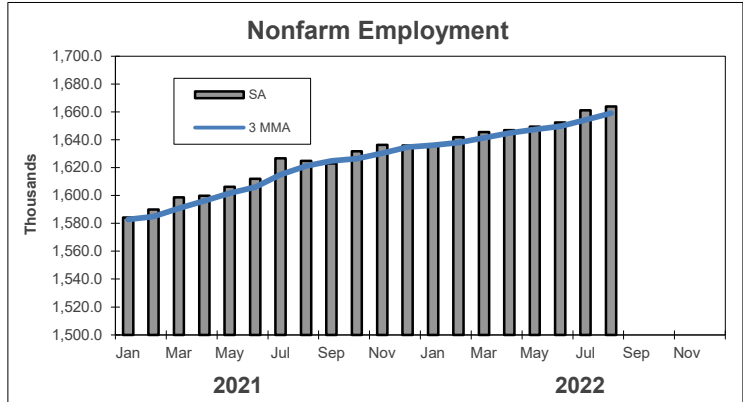
P = Preliminary R = Revised

Hours and earnings are also developed for the state's major industry sectors and Labor Market Areas. They can be found on our website at: www1.ctdol.state.ct.us/lmi

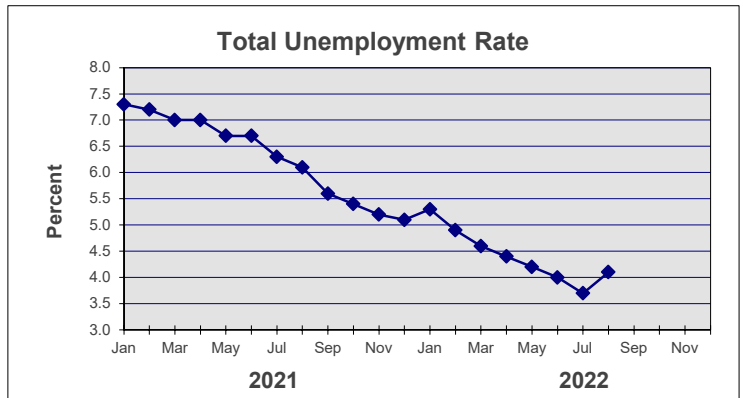
TRENDS

Seasonally Adjusted

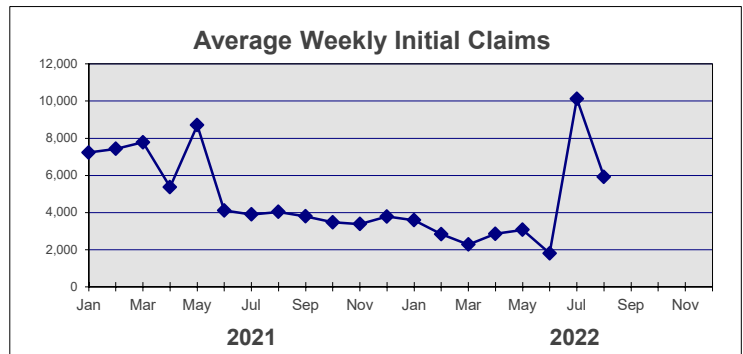
	Nonfarm Employment (000s)	Total Unemployment Rate
2021		
Jan	1,584.1	7.3
Feb	1,590.0	7.2
Mar	1,598.7	7.0
Apr	1,599.8	7.0
May	1,606.3	6.7
Jun	1,612.0	6.7
Jul	1,626.6	6.3
Aug	1,624.7	6.1
Sep	1,622.9	5.6
Oct	1,631.6	5.4
Nov	1,636.3	5.2
Dec	1,635.8	5.1



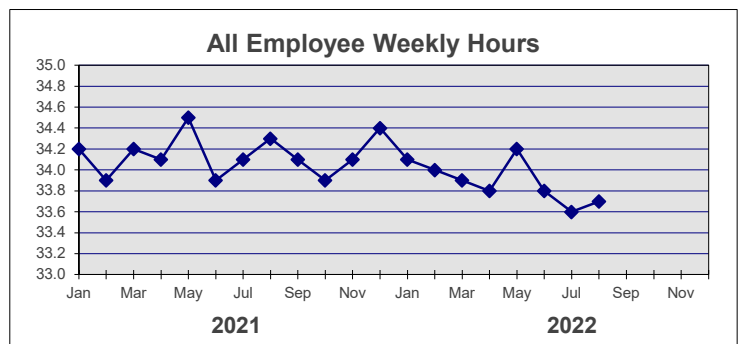
2022		
Jan	1,636.4	5.3
Feb	1,641.8	4.9
Mar	1,645.5	4.6
Apr	1,646.9	4.4
May	1,649.3	4.2
Jun	1,652.3	4.0
Jul	1,661.0 R	3.7 R
Aug	1,663.9 P	4.1 P
Sep		
Oct		
Nov		
Dec		



	Avg Weekly Initial Claims	All Employee Weekly Hours*
2021		
Jan	7,226	34.2
Feb	7,431	33.9
Mar	7,780	34.2
Apr	5,366	34.1
May	8,702	34.5
Jun	4,109	33.9
Jul	3,892	34.1
Aug	4,031	34.3
Sep	3,789	34.1
Oct	3,472	33.9
Nov	3,376	34.1
Dec	3,780	34.4



2022		
Jan	3,585	34.1
Feb	2,837	34.0
Mar	2,275	33.9
Apr	2,848	33.8
May	3,066	34.2
Jun	1,800	33.8
Jul	10,124	33.6 R
Aug	5,915	33.7 P
Sep		
Oct		
Nov		
Dec		



* Not seasonally adjusted

P = Preliminary

R = Revised

** Labor-management dispute