



LABOR SITUATION

Office of Research
Danté Bartolomeo, Commissioner

FOR IMMEDIATE RELEASE

March 2025 Data
CT Unemployment Rate = 3.6%
US Unemployment Rate = 4.2%

CT March unemployment rate rises two-tenths to 3.6% while state payrolls decline 4,500

WETHERSFIELD, April 17, 2025 – Connecticut industry payrolls fell 4,500 jobs (-0.3%) in March 2025 to a level of 1,711,400 as the state’s jobless rate was up two-tenths of one percent to 3.6% (preliminary, seasonally adjusted data). Nonfarm industry employment in the state is 6,000 (0.4%) positions higher than a year ago. The February 2025 preliminary job loss of 1,200 (-0.1%) was lowered by 500 to a 1,700 jobs decline (-0.1%). The March 2025 preliminary Connecticut jobless rate of 3.6%, is up two-tenths of one percent from February 2025 (3.4%) and higher by four-tenths of one percent from a year ago (3.2%). *This labor statistics report presents current estimated data from two different monthly surveys (residential and establishment) produced by the U.S. Bureau of Labor Statistics (BLS) in partnership with the states.*

“The unemployment rate remains low by historic standards despite recent small increases,” said Patrick Flaherty, Director of the Office of Research at the Connecticut Department of Labor. “Private sector jobs reached an all-time high in January. While they have come down over the past two months, they remain more than 10,000 jobs above their pre-pandemic high.”

Connecticut’s private sector employment was lower by 4,800 positions (-0.3%) in March 2025 to 1,476,600 but is still up 6,100 jobs (0.4%) from the March 2024 level of 1,470,500. February’s preliminary private sector decline of 1,200 jobs (-0.1%) was adjusted lower by 400 to a 1,600 decrease (-0.1%). Private education was the industry with the largest decline and the drop may have been due to reduced payrolls (e.g., student laborers) during spring break. The services to buildings and dwellings portion of administrative & support services as well as construction may have been affected by the weather. The combined **government supersector** was up 300 positions (0.1%) in March to a level of 234,800 jobs but is now marginally lower by 100 (-0.04%) positions over the year. *Connecticut’s aggregate government supersector consists of all civilian federal, state, local, and tribal government employment, including public education and Native American casino jobs located on federally recognized tribal reservations.*

Three of the ten major industry *supersectors* added jobs in March 2025, while seven declined.

The three industry *supersectors* that increased employment in March 2025 included:

Increasing Supersectors			
Industry Supersector	Amount of Increase	Percent Change	March 2025 Employment
Government	+300	0.1%	234,800
Financial Activities	+200	0.2%	119,700
Trade, Transportation, & Utilities	+100	0.03%	300,000

The seven industry *supersector* that decreased in jobs in March 2025 were:

Decreasing Supersectors			
Industry Supersector	Amount of Decrease	Percent Change	February 2025 Employment
Private Education & Health Services	-2,100	-0.6%	370,200
Professional and Business Services	-1,800	-0.8%	220,000
Manufacturing	-500	-0.3%	154,200
Other Services	-300	-0.5%	63,900
Leisure & Hospitality	-200	-0.1%	155,700
Information	-100	-0.3%	30,300
Construction & Mining	-100	-0.2%	62,600

Connecticut Labor Market Areas (LMAs): Three of the new major Connecticut **LMAs** (the 5 Metros formed from the CT Councils of Governments or COG regions) that are seasonally adjusted by the BLS (about 93.7% of the state) gained nonfarm payroll jobs while two declined in March 2025. The **Bridgeport-Stamford-Danbury LMA** (0.2%, 409,600) increased 700 jobs, and the **Hartford-West Hartford-East Hartford LMA** (0.1%, 607,600) added 400 positions. The **Waterbury-Shelton LMA** (0.1%, 161,400) was also up 100 on payrolls. Conversely, the **New Haven LMA** (-0.7%, 292,700) fell by 2,100 positions, and the **Norwich-New London-Willimantic LMA** (-0.2%, 128,300) lost 200 jobs.

Note: The new five major Connecticut LMAs are independently estimated from the statewide data by the BLS and cover over 93% of the nonfarm employment in the state. Thus, estimates will not exactly sum to the statewide total. Furthermore, monthly Seasonal Adjustment (SA) on these 5 new designated COG-based labor markets may undergo some shifting seasonality effects due to the concurrent seasonal process exaggerating some movements on the new geographies due to the lack of more precise historical seasonal factors (because the metros are new). For instance, this month, the five major CT LMA's collectively show a much bigger OTM SA employment drop than the state itself.

Hours and Earnings: The March 2025 **private sector** average work week, *not seasonally adjusted*, averaged 33.4 hours (AWH). This is up one-tenth of an hour from the March 2024 average (0.3%, 33.3). Average hourly earnings (AHE) at \$39.08 in March 2025, *not seasonally adjusted*, were up by \$1.64 (4.4%) from the March 2024 estimate of \$37.44. The resultant March 2025 private sector average weekly earnings (AWE) were estimated at \$1,305.27, higher by \$58.52 (4.7%) from a year ago (\$1,246.75). The Consumer Price Index for All Urban Consumers (CPI-U, U.S. City Average, not seasonally adjusted - all items index) for March 2025 was up 2.4% from a year ago.

Note: Current all-employee private sector hours and earnings estimates can be volatile due to fluctuating sample responses.

Labor Force Data (residential household survey)

The preliminary March 2025 unemployment rate for Connecticut was estimated by the BLS Local Area Unemployment Statistics program (LAUS) to be **3.6%** (seasonally adjusted). This is up from February 2025, when it was 3.4%. CT's unemployment rate is up four-tenths of a percentage point from a year ago (3.2%). The U.S. unemployment rate for March 2025 was 4.2%, up one-tenth of one percent from the February 2025 rate (4.1%) and higher over the year from 3.9% in March 2024.

Average weekly initial unemployment claims (*not seasonally adjusted*) for first-time filers (AWIC) in Connecticut for March 2025 were 2,534. This is 211 (-7.7%) claims lower than February 2025 (2,745) but higher by a small 9 claims (0.4%) than the March 2024 (2,525) level.

The nonfarm employment estimate, derived from a survey of businesses, is a measure of jobs in the state; the unemployment rate and labor force estimates are based on a household survey and measure the work status of people who live in Connecticut. Because of the distinct differences both in concept and scope between the two estimates, nonfarm employment and unemployment do not necessarily move in the same economic direction month to month. Job and employment estimates are best understood in the context of their movement over several months rather than observed changes in a single month's value.

Next Connecticut Labor Situation release: Tuesday, May 20, 2025
(Preliminary April 2025 data)

Contact: Communications, CT Department of Labor
CTDOL.Communications@ct.gov

Labor Market Information is available at: www.ctworkforce.info
200 Folly Brook Boulevard, Wethersfield, CT 06109-1114 www.ct.gov/dol
An Equal Opportunity/Affirmative Action Employer

NONFARM EMPLOYMENT

Jobs - by Place of Work

CONNECTICUT AND THE UNITED STATES - Seasonally Adjusted

	March 2025 P	February 2025 R	January 2025	December 2024	March 2024	Over Month Change	Over Month Rate	Over Year Change	Over Year Rate
CONNECTICUT	1,711,400	1,715,900	1,717,600	1,716,100	1,705,400	-4,500	-0.3%	6,000	0.4%
Total Private	1,476,600	1,481,400	1,483,000	1,481,800	1,470,500	-4,800	-0.3%	6,100	0.4%
Goods Producing Industries									
Mining	500	500	500	500	500	0	0.0%	0	0.0%
Construction	62,100	62,200	62,300	63,100	62,800	-100	-0.2%	-700	-1.1%
Manufacturing	154,200	154,700	155,200	155,400	156,100	-500	-0.3%	-1,900	-1.2%
Durable Goods	121,100	121,600	121,700	122,100	122,400	-500	-0.4%	-1,300	-1.1%
Nondurable Goods	33,100	33,100	33,500	33,300	33,700	0	0.0%	-600	-1.8%
Service Providing Industries									
Trade, Transportation & Utilities	300,000	299,900	300,100	299,600	299,300	100	0.0%	700	0.2%
Wholesale	61,400	61,300	61,600	61,300	61,200	100	0.2%	200	0.3%
Retail	165,200	164,800	164,900	165,400	166,300	400	0.2%	-1,100	-0.7%
Transp, Warehousing & Utilities	73,400	73,800	73,600	72,900	71,800	-400	-0.5%	1,600	2.2%
Information	30,300	30,400	30,500	30,500	30,800	-100	-0.3%	-500	-1.6%
Financial Activities	119,700	119,500	119,300	118,600	117,600	200	0.2%	2,100	1.8%
Finance & Insurance	99,700	99,400	99,300	98,700	98,100	300	0.3%	1,600	1.6%
Real Estate, Rental & Leasing	20,000	20,100	20,000	19,900	19,500	-100	-0.5%	500	2.6%
Professional & Business Services	220,000	221,800	222,700	221,400	220,200	-1,800	-0.8%	-200	-0.1%
Prof, Scientific & Tech Services	101,500	101,700	101,900	100,900	100,900	-200	-0.2%	600	0.6%
Management of Companies	30,900	30,800	30,900	31,000	30,900	100	0.3%	0	0.0%
Admn & Support & Waste Mgt Serv	87,600	89,300	89,900	89,500	88,400	-1,700	-1.9%	-800	-0.9%
Educational & Health Services	370,200	372,300	371,900	371,700	364,400	-2,100	-0.6%	5,800	1.6%
Private Educational Services	72,700	74,700	74,700	75,100	73,500	-2,000	-2.7%	-800	-1.1%
Health Care & Social Assistance	297,500	297,600	297,200	296,600	290,900	-100	0.0%	6,600	2.3%
Leisure and Hospitality	155,700	155,900	156,300	156,900	155,000	-200	-0.1%	700	0.5%
Arts, Entertainment & Recreation	27,700	27,600	27,800	28,300	28,500	100	0.4%	-800	-2.8%
Accommodation & Food Services	128,000	128,300	128,500	128,600	126,500	-300	-0.2%	1,500	1.2%
Other Services	63,900	64,200	64,200	64,100	63,800	-300	-0.5%	100	0.2%
Government**	234,800	234,500	234,600	234,300	234,900	300	0.1%	-100	0.0%
UNITED STATES	159,398,000	159,170,000	159,053,000	158,942,000	157,517,000	228,000	0.1%	1,881,000	1.2%

LABOR MARKET AREAS (LMAs, COG-based)

Labor Market Area employment estimates are made independently of Statewide estimates.

Seasonally Adjusted data (Metros) Metropolitan Statistical Areas (5 CT MSAs)	March 2025 P	February 2025 R	January 2025	December 2024	March 2024	Over Month Change	Over Month Rate	Over Year Change	Over Year Rate
Bridgeport-Stamford-Danbury	409,600	408,900	410,400	410,500	407,500	700	0.2%	2,100	0.5%
Hartford	607,600	607,200	609,000	610,600	607,900	400	0.1%	-300	0.0%
New Haven	292,700	294,800	295,800	295,700	293,800	-2,100	-0.7%	-1,100	-0.4%
Norwich-New London-Willimantic	128,300	128,500	128,700	128,300	127,000	-200	-0.2%	1,300	1.0%
Waterbury - Shelton	161,400	161,300	161,600	162,100	160,800	100	0.1%	600	0.4%
<i>Not Seasonally Adjusted data (Non-Classified Areas, 2 Micropolitan Statistical Areas - Micros, State estimated - not BLS)</i>									
Putnam - Northeastern	28,100	28,000	28,200	28,800	28,400	100	0.4%	-300	-1.1%
Torrington - Northwest Hills	37,000	37,100	37,400	38,100	36,300	-100	-0.3%	700	1.9%

* Less than 0.05%

** Includes Native American tribal government employment

P = Preliminary

R = Revised

Starting in March, 2011, our monthly statewide and major LMA nonfarm job estimates have been taken over by the US Department of Labor Bureau of Labor Statistics. This is the final phase of transition in this program, which began in 2008. As a result of changes in the estimation procedures, you are likely to see more variability in month-to-month estimates of job counts. Caution should be used in interpreting any single month's estimate. The data are best interpreted to identify trends and cycles over several months and quarters. If you have any questions about these changes, please email us at: dol.lmi@ct.gov. COG - Council of Government regions.

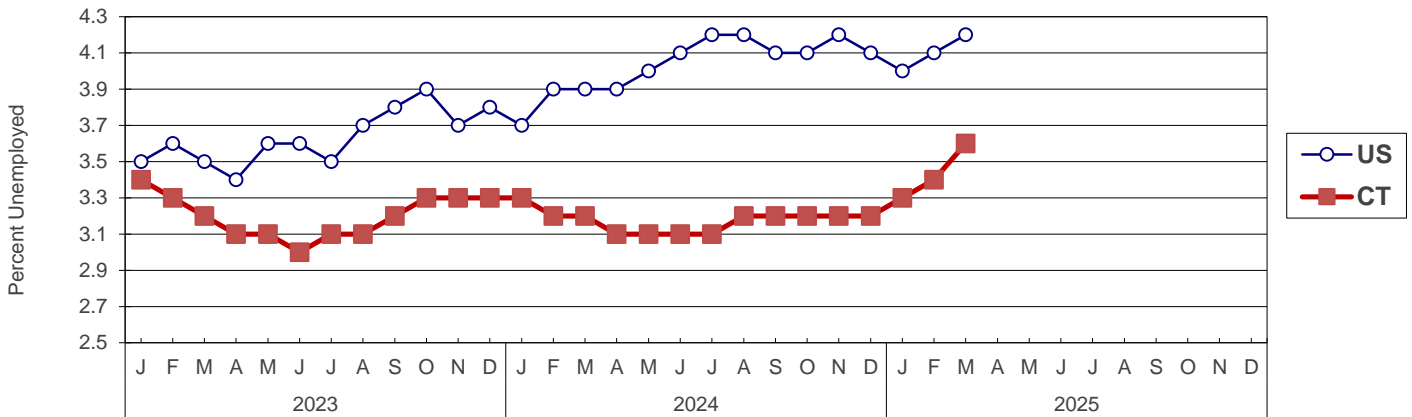
UNEMPLOYMENT

Persons Unemployed - by Place of Residence

CONNECTICUT AND THE UNITED STATES - Seasonally Adjusted

	Mar 2025 P		Mar 2024 R		Change		Feb 2025 R	
	Number	Rate	Number	Rate	Number	Points	Number	Rate
CONNECTICUT								
Unemployed	69,500	3.6	61,400	3.2	8,100	0.4	66,400	3.4
Labor Force	1,956,400		1,933,000		23,400		1,957,100	
UNITED STATES								
Unemployed	7,083,000	4.2	6,497,000	3.9	586,000	0.3	7,052,000	4.1
Labor Force	170,591,000		167,922,000		2,669,000		170,359,000	

U.S. AND CONNECTICUT UNEMPLOYMENT RATES - Seasonally Adjusted 2023 - 2025



LABOR MARKET AREAS - Not Seasonally Adjusted

	Mar 2025 P		Mar 2024 R		Change		Feb 2025 R	
	Number	Rate	Number	Rate	Number	Points	Number	Rate
Bridpt-Stamford-Danbury			16,200	3.2	-16,200	-3.2		
Hartford-W.Htfd-E.Htfd			19,900	3.3	-19,900	-3.3		
New Haven			10,100	3.2	-10,100	-3.2		
Norwich-New Lon.-Willi.			4,500	3.2	-4,500	-3.2		
Putnam-Northeast			1,400	3.4	-1,400	-3.4		
Torrington-Northwest			1,500	3.4	-1,500	-3.4		
Waterbury-Shelton			9,400	3.9	-9,400	-3.9		
CONNECTICUT			63,800	3.3	-63,800	-3.3		
UNITED STATES			6,604,000	3.9	-6,604,000	-3.9		

P = Preliminary

R = Revised

Labor force data included in this publication are developed in cooperation with the U.S. Department of Labor, Bureau of Labor Statistics.

UNEMPLOYMENT RATES

Not Seasonally Adjusted

HOURS AND EARNINGS

CONNECTICUT Statewide - Not Seasonally Adjusted

	Average Weekly Earnings				Average Weekly Hours				Average Hourly Earnings			
	Mar. 2025 P	Mar. 2024	Change over Yr.	Feb. 2025 R	Mar. 2025 P	Mar. 2024	Change over Yr.	Feb. 2025 R	Mar. 2025 P	Mar. 2024	Change over Yr.	Feb. 2025 R
Private Industry All Employees	\$1,305.27	\$1,246.75	\$58.52	\$1,312.29	33.4	33.3	0.1	33.4	\$39.08	\$37.44	\$1.64	\$39.29
Manufacturing*												
Production Workers	\$1,215.89	\$1,212.96	\$2.93	\$1,225.69	39.8	38.3	1.5	39.5	\$30.55	\$31.67	-\$1.12	\$31.03

* Production worker data have been impacted by the loss of a large, high-paying manufacturer from the monthly sample.

P = Preliminary

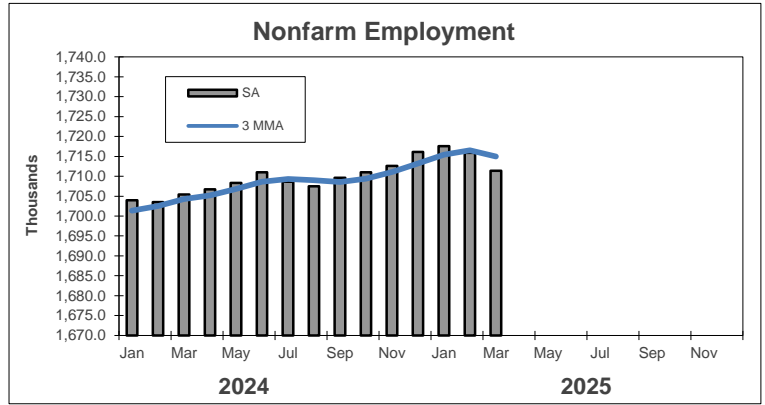
R = Revised

Hours and earnings are also developed for the state's major industry sectors and Labor Market Areas. They can be found on our website at: www1.ctdol.state.ct.us/lmi

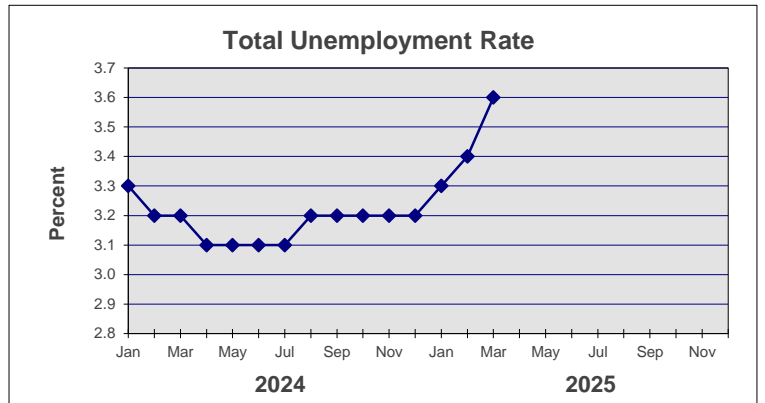
TRENDS

Seasonally Adjusted

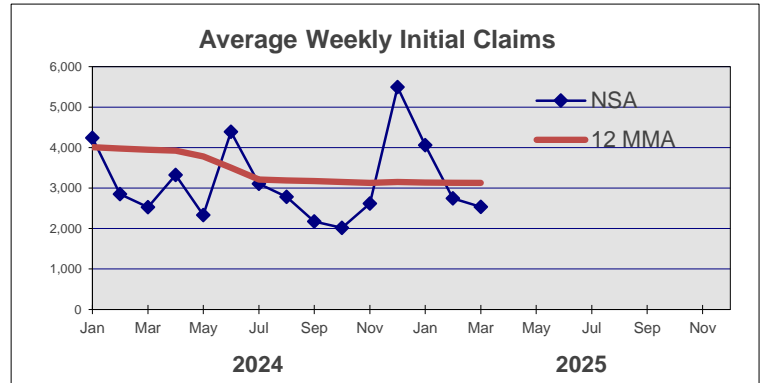
	Nonfarm Employment (000s)	Total Unemployment Rate
2024		
Jan	1,704.0	3.3
Feb	1,703.5	3.2
Mar	1,705.4	3.2
Apr	1,706.7	3.1
May	1,708.3	3.1
Jun	1,711.0	3.1
Jul	1,708.6	3.1
Aug	1,707.5	3.2
Sep	1,709.6	3.2
Oct	1,711.0	3.2
Nov	1,712.6	3.2
Dec	1,716.1	3.2



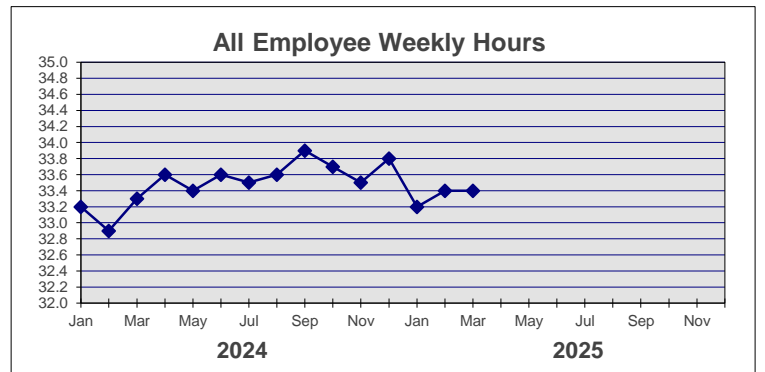
2025		
Jan	1,717.6	3.3
Feb	1,715.9 R	3.4 R
Mar	1,711.4 P	3.6 P
Apr		
May		
Jun		
Jul		
Aug		
Sep		
Oct		
Nov		
Dec		



	NSA Avg Weekly Initial Claims	All Employee Weekly Hours*
2024		
Jan	4,239	33.2
Feb	2,847	32.9
Mar	2,525	33.3
Apr	3,324	33.6
May	2,331	33.4
Jun	4,389	33.6
Jul	3,109	33.5
Aug	2,780	33.6
Sep	2,173	33.9
Oct	2,017	33.7
Nov	2,621	33.5
Dec	5,495	33.8



2025		
Jan	4,059	33.2
Feb	2,745	33.4 R
Mar	2,534	33.4 P
Apr		
May		
Jun		
Jul		
Aug		
Sep		
Oct		
Nov		
Dec		



* Not seasonally adjusted

P = Preliminary

R = Revised

** Labor-management dispute