

# ECONOMIC DIGEST

Vol.30 No.3 A publication of Connecticut Department of Labor

**MARCH 2025**

**IN THIS ISSUE...**

**Connecticut's Economy Continued to Grow in 2024** ..... 1-5

**Economic Indicators**

on the Overall Economy ..... 5

Individual Data Items ..... 6-8

Comparative Regional Data ..... 9

Economic Indicator Trends ..... 10-11

Help Wanted OnLine ..... 15

Business and Employment Changes Announced in the News Media ..... 19

**Labor Market Areas:**

Nonfarm Employment ..... 12-17

Sea. Adj. Nonfarm Employment ..... 14

Labor Force ..... 18

Hours and Earnings ..... 19

**Cities and Towns:**

Labor Force ..... 20-21

Housing Permits ..... 22

Technical Notes ..... 23

At a Glance ..... 24

**In January...**

**Nonfarm Employment**

Connecticut ..... 1,718,400

Change over month ..... +0.13%

Change over year ..... +0.85%

United States ..... 159,069,000

Change over month ..... +0.09%

Change over year ..... +1.29%

**Unemployment Rate**

Connecticut ..... 3.3%

United States ..... 4.0%

**Consumer Price Index**

United States ..... 317.671

Change over year ..... +3.0%

## Connecticut's Economy Continued to Grow in 2024

*By Jungmin Charles Joo, Department of Labor*

**C**onnecticut employment continued to grow for the fourth year in a row, surpassing the pre-pandemic levels in 2024. The revised annual average total nonfarm employment rose 0.8% to a level of 1,708,300 in 2024. Last year's annual average unemployment rate was unchanged over the year at 3.2%. Overall, the 2024 economy continued to grow moderately as per the annual diffusion index.

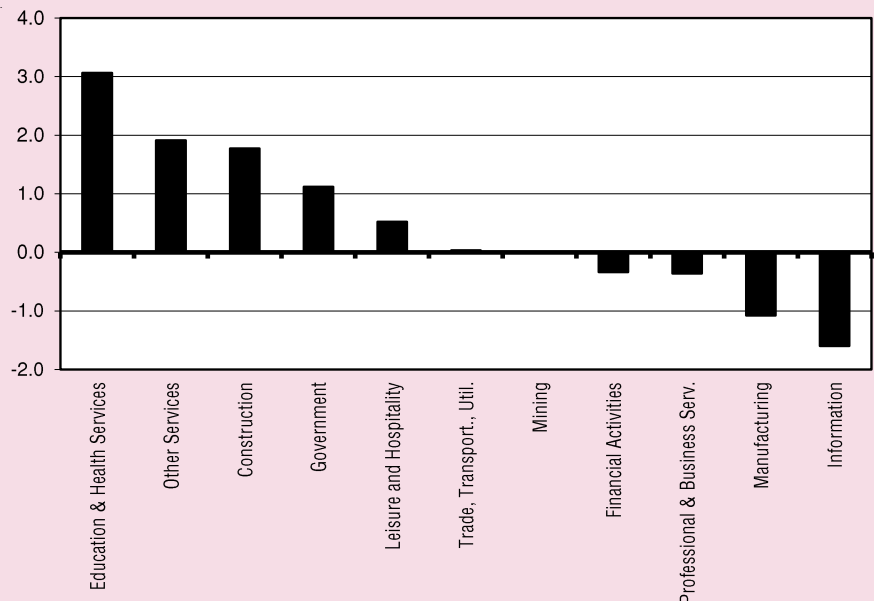
**Nonfarm Employment**

After the latest annual revision (based on annual average, not seasonally adjusted data), in 2024 Connecticut gained 13,300 jobs (0.8%), fewer than the increase of 26,800 jobs

(1.6%) in 2023. In the nation employment rose 1.3% in 2024, after having increased 2.2% in 2023. (Seasonally adjusted, Connecticut added 16,000 jobs from December 2023 to December 2024.)

As shown in Chart 1, the majority of Connecticut's industry sectors continued to add jobs last year. Six of eleven major industry sectors have gained employment over the year, while four shed jobs. The biggest job growth occurred in education and health services (10,900, +3.1%) and other services (1,200, +1.9%). However, information (-500, -1.6%) and manufacturing (-1,700, -1.1%) posted the fastest employment decline in 2024.

**CHART 1. CT Employment Percent Changes, 2023 to 2024**



# ECONOMIC DIGEST

**The Connecticut Economic Digest** is published monthly by the Connecticut Department of Labor, Office of Research. Its purpose is to regularly provide users with a comprehensive source for the most current, up-to-date data available on the workforce and economy of the state, within perspectives of the region and nation.

The annual subscription is \$50. Send subscription requests to: **The Connecticut Economic Digest**, Connecticut Department of Labor, Office of Research, 200 Folly Brook Boulevard, Wethersfield, CT 06109-1114. Make checks payable to the Connecticut Department of Labor. Back issues are \$4 per copy. The Digest can be accessed free of charge from the DOL Web site. Articles from **The Connecticut Economic Digest** may be reprinted if the source is credited. Please send copies of the reprinted material to the Managing Editor. The views expressed by the authors are theirs alone and may not reflect those of the Connecticut Department of Labor.

**Managing Editor:** Jungmin Charles Joo

**Associate Editor:** Erin C. Wilkins

We would like to acknowledge the contributions of many DOL Research staff and Rob Damroth to the publication of the Digest.

## Connecticut Department of Labor

Danté Bartolomeo, Commissioner  
Daryle Dudzinski, Deputy Commissioner  
Mark Polzella, Deputy Commissioner

Patrick J. Flaherty, Director  
Office of Research  
200 Folly Brook Boulevard  
Wethersfield, CT 06109-1114  
Phone: (860) 263-6255  
Fax: (860) 263-6263  
E-Mail: [dol.econdigest@ct.gov](mailto:dol.econdigest@ct.gov)  
Website: <http://www.ctdol.state.ct.us/lmi>



### Unemployment

As the economy moved into expansionary territory after recovering all the jobs lost from the impact of the pandemic, unemployment indicators also pointed to a better labor market situation in 2024. The annual average unemployment rate remained steady at 3.2% for the second year, the lowest level since the pre-pandemic rate of 3.6% in 2019. By comparison, the nation's rate increased from 3.6% in 2023 to 4.0% in 2024. Any unemployment rate around 4% would be considered low by historic standards.

In addition, the U-6 rate, a broader measure of labor underutilization which also includes those who are marginally attached workers and part-timers that want full-time work, was unchanged at 7.1% in 2024 for Connecticut, the lowest rate over the last ten years. The insured unemployment rate was also essentially unchanged over the year at 1.6%. The number of average weekly initial claims for unemployment fell from 4,009 in 2023 to 3,154 in 2024, the lowest level during the 10-year period.

### Employment by LMA

All but one (Putnam-Northeast) of seven labor market areas (LMAs) in Connecticut continued to add jobs. The biggest

job gain occurred in the New Haven region, based on annual averages. The charts on page 4 also show long-term seasonally adjusted and not seasonally adjusted total nonfarm employment trends of Connecticut and all seven LMAs from 2011 to January 2025.

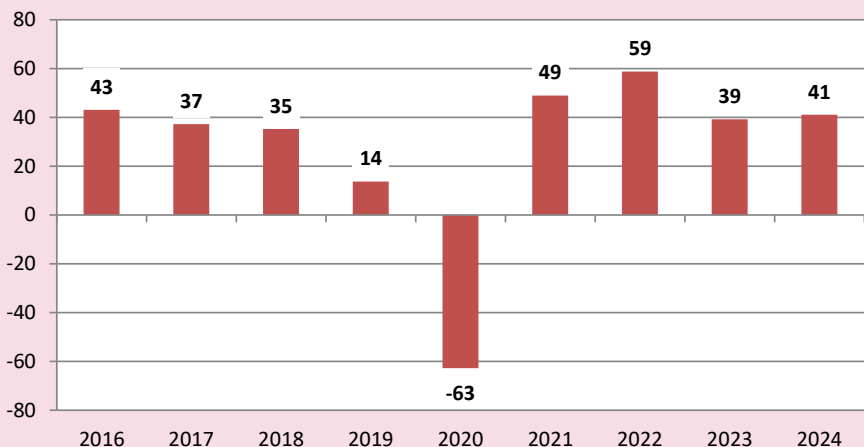
### Other Economic Indicators

In addition to employment and unemployment data, most other economic indicators reflected the continuing economic growth in Connecticut. As the table on page 3 shows, both inflation-adjusted total personal income and real Unemployment Insurance covered wages of state residents (3-quarter averages) rose for the second year in a row. Real average weekly earnings in both total private sector and manufacturing sector turned around after three years of decline. Both new housing permits and construction contracts soared for three consecutive years. New auto registration grew for the second year. Exports and occupancy rates rose for four years in a row. Both S & P 500 and gaming payments increased for the second year.

On the other hand, newly updated Connecticut

-continued on page 5-

**CHART 2. CT Annual Diffusion Index (ADI) of 51 Economic Indicators, 2016-2024**



## Connecticut Economic Indicators, 2015-2024 (Annual Averages/Totals)

STATEWIDE	2015	2016	2017	2018	2019	2020	2021	2022	2023	2024
<b>NONFARM EMPLOYMENT (000s)</b>										
TOTAL NONFARM.....	1,686.9	1,692.5	1,696.6	1,699.5	1,696.1	1,570.7	1,616.3	1,668.2	1,695.0	1,708.3
TOTAL PRIVATE.....	1,443.2	1,451.7	1,458.1	1,463.2	1,460.1	1,346.0	1,392.1	1,440.8	1,462.5	1,473.2
GOODS PRODUCING.....	215.5	216.3	217.7	220.0	222.1	211.3	212.9	218.7	220.3	219.8
SERVICE PROVIDING.....	1,471.4	1,476.3	1,478.9	1,479.5	1,474.0	1,359.3	1,403.4	1,449.5	1,474.6	1,488.5
MINING.....	0.6	0.6	0.6	0.5	0.5	0.5	0.5	0.5	0.5	0.5
CONSTRUCTION.....	58.0	59.2	58.4	58.8	59.7	56.9	59.4	61.1	62.1	63.2
MANUFACTURING.....	157.0	156.5	158.7	160.7	161.9	153.9	153.0	157.1	157.8	156.1
Durable Goods.....	123.6	122.8	124.3	126.3	127.3	121.5	120.0	122.8	123.4	122.5
Non-Durable Goods.....	33.3	33.7	34.4	34.4	34.6	32.3	33.0	34.4	34.4	33.6
TRADE, TRANSPORT., UTILITIES.....	296.3	297.3	297.1	296.7	292.6	277.4	290.3	298.0	298.8	298.9
Wholesale Trade.....	61.6	61.5	61.5	61.3	59.6	55.9	57.3	60.2	60.9	61.0
Retail Trade.....	184.7	184.7	183.5	180.7	175.7	160.5	167.2	168.0	167.3	165.7
Transport., Warehousing, & Utilities.....	50.1	51.1	52.1	54.7	57.4	61.0	65.8	69.9	70.5	72.3
INFORMATION.....	32.5	32.4	31.6	31.7	31.6	29.3	30.1	31.3	31.3	30.8
FINANCIAL ACTIVITIES.....	130.1	129.5	127.9	125.5	123.7	120.1	118.0	118.6	118.3	117.9
PROFESSIONAL & BUSINESS SERV.....	219.2	219.1	219.6	221.0	218.9	206.6	214.1	222.0	221.5	220.7
EDUCATIONAL & HEALTH SERV.....	334.6	338.5	342.5	344.7	348.1	328.1	334.0	342.2	355.8	366.7
LEISURE AND HOSPITALITY.....	151.2	154.0	156.6	157.8	157.6	117.4	134.6	148.9	153.7	154.5
OTHER SERVICES.....	63.9	64.7	65.1	65.6	65.4	55.8	58.3	61.2	62.7	63.9
GOVERNMENT.....	243.7	240.9	238.5	236.4	236.0	224.7	224.2	227.4	232.5	235.1
<b>TOTAL NONFARM EMPLOYMENT IN LABOR MARKET AREAS</b>										
Bridgeport-Stamford-Danbury.....	406.6	406.7	403.5	403.7	401.0	367.4	381.2	396.4	405.1	407.7
Hartford-West Hartford-East Hartford.....	603.1	604.9	607.6	611.5	612.8	571.7	583.1	595.6	605.5	608.1
New Haven.....	274.3	276.6	278.7	279.8	281.8	267.9	276.1	285.6	289.0	293.5
Norwich-New London-Willimantic.....	129.6	129.9	131.6	131.3	130.3	114.7	118.3	122.9	125.3	127.3
Waterbury-Shelton.....	162.7	163.6	164.1	165.2	165.4	152.5	156.0	159.8	160.6	160.8
Putnam-Northeast.....	28.7	28.7	28.5	28.4	28.8	26.9	28.0	28.8	29.1	28.8
Torrington-Northwest.....	36.7	36.5	36.2	36.6	36.6	33.9	34.8	36.2	37.0	37.7
<b>ALL EMP. HOURS &amp; EARNINGS</b>										
Total Private Average Weekly Hours.....	33.5	33.6	33.7	33.9	33.8	34.1	34.1	33.8	33.4	33.5
Real Tot Priv Avg Hrlly Earn (82-84\$).....	\$12.29	\$12.68	\$12.71	\$12.76	\$12.91	\$13.16	\$12.49	\$11.85	\$11.81	\$12.06
Real Tot Priv Avg Wkly Earn (82-84\$).....	\$411.87	\$425.95	\$428.49	\$432.56	\$436.47	\$448.63	\$425.91	\$400.42	\$394.43	\$404.10
<b>UNEMPLOYMENT</b>										
Labor Force (000s).....	1,903.4	1,906.7	1,918.6	1,920.3	1,933.5	1,877.9	1,850.4	1,925.7	1,913.2	1,944.4
Employed (000s).....	1,796.5	1,814.2	1,833.9	1,845.5	1,864.2	1,727.9	1,730.8	1,847.6	1,851.8	1,882.6
Unemployed (000s).....	106.9	92.6	84.6	74.7	69.3	150.0	119.5	78.1	61.4	61.8
Unemployment Rate.....	5.6%	4.9%	4.4%	3.9%	3.6%	8.0%	6.5%	4.1%	3.2%	3.2%
Average Weekly Initial Claims.....	3,910	3,879	3,716	3,515	3,443	12,728	5,267	3,894	4,009	3,154
Insured Unemployment Rate.....	2.61%	2.50%	2.36%	2.18%	2.02%	9.06%	3.33%	1.40%	1.58%	1.63%
U-6 Rate.....	10.9%	10.8%	10.1%	8.9%	7.9%	14.1%	10.7%	7.8%	7.1%	7.1%
<b>MANUFACTURING ACTIVITY</b>										
Average Weekly Hours.....	40.5	42.6	41.6	41.5	42.3	40.6	39.2	40.6	39.8	38.8
Real Average Hourly Earnings (82-84\$).....	\$11.07	\$11.41	\$10.46	\$10.94	\$10.92	\$11.50	\$10.57	\$9.75	\$9.73	\$10.20
Real Average Weekly Earnings (82-84\$).....	\$448.38	\$486.13	\$435.21	\$453.90	\$461.72	\$466.94	\$414.50	\$395.92	\$387.45	\$395.88
CT Mfg. Production Index (2012=100).....	100.3	95.7	98.1	102.5	103.8	90.9	99.5	104.0	99.1	98.5
<b>INCOME (mil.\$)</b>										
Real Personal Income, SA (1982-84 \$)*.....	\$100,915	\$101,538	\$101,767	\$103,773	\$104,658	\$106,202	\$108,732	\$104,805	\$106,775	\$109,015
Real UI Covered Wages, SA (1982-84 \$)*.....	\$48,481	\$48,426	\$48,016	\$47,711	\$48,261	\$47,628	\$48,128	\$47,822	\$48,170	\$49,362
<b>OTHER ECONOMIC INDICATORS</b>										
New Housing Permits.....	5,883	5,341	4,606	4,570	6,481	5,767	4,651	5,162	5,764	6,499
Construction Contracts (1980=100).....	412.6	322.1	451.3	372.8	366.5	372.6	351.2	492.0	530.7	535.3
New Auto Registrations.....	168,269	267,284	223,577	222,223	211,264	171,479	209,154	168,211	174,813	197,258
Exports (bil.\$).....	\$15.24	\$14.39	\$14.79	\$17.40	\$16.23	\$13.83	\$14.55	\$15.35	\$15.85	\$17.38
S&P 500: Monthly Close (December).....	2,043.94	2,238.83	2,673.61	2,506.85	3,230.78	3,756.07	4,766.18	3,839.50	4,769.83	5,881.63
Gaming Payments (mil.\$).....	\$266.0	\$266.5	\$273.7	\$266.1	\$247.8	\$165.5	\$215.8	\$211.8	\$213.1	\$213.4
Occupancy Rate.....	60.2%	60.6%	61.6%	62.1%	62.6%	40.4%	56.1%	59.6%	60.8%	62.3%
Gaming Slots (mil.\$).....	\$12,837.9	\$13,032.0	\$13,348.8	\$13,051.2	\$12,047.3	\$7,807.7	\$10,301.3	\$10,311.2	\$10,267.4	\$10,183.1

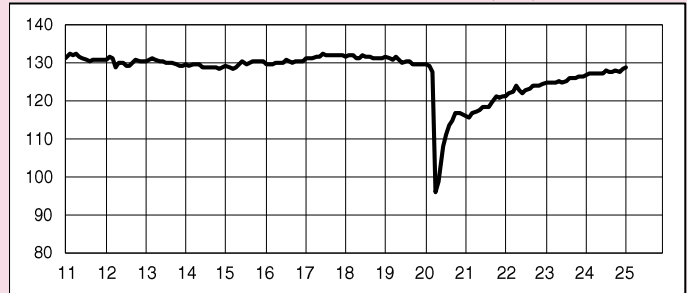
\* 2024: three-quarter average

# Seasonally Adjusted Nonfarm Employment Trends by Labor Market Area, 2011 - Jan. 2025

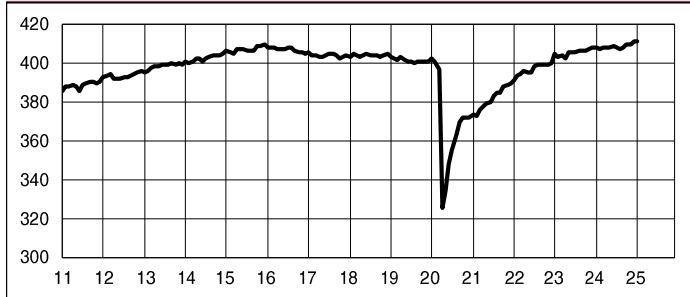
**TOTAL NONFARM EMPLOYMENT, SA, 000s**



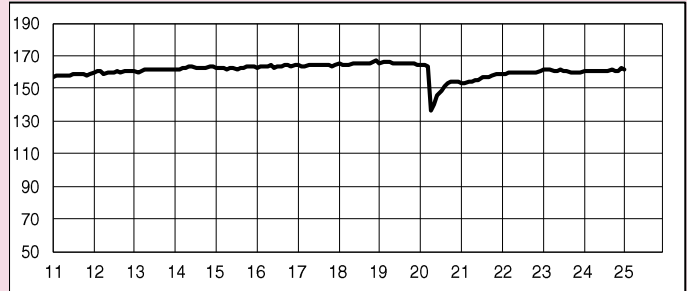
**NORWICH-NEW LONDON-WILLIMANTIC LMA EMP., SA, 000s**



**BRIDGEPORT-STAMFORD-DANBURY LMA EMP., SA, 000s**



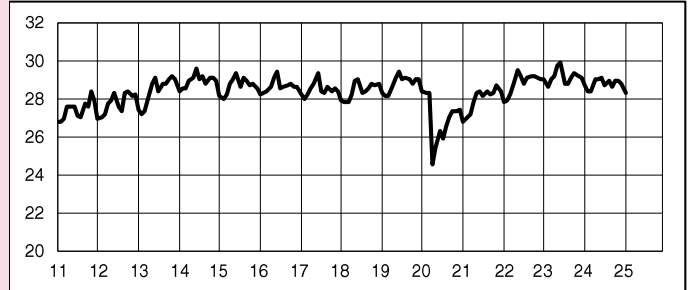
**WATERBURY-SHELTON LMA EMP., SA, 000s**



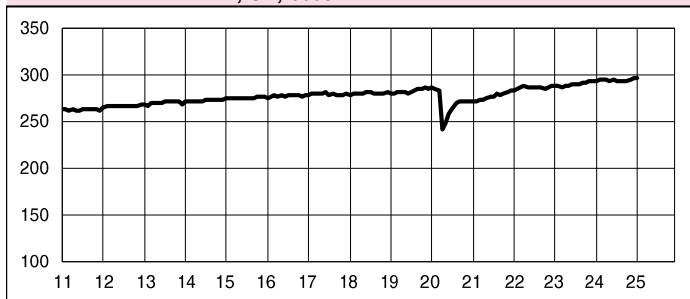
**HARTFORD-WEST HARTFORD-EAST HARTFORD LMA EMP., SA, 000s**



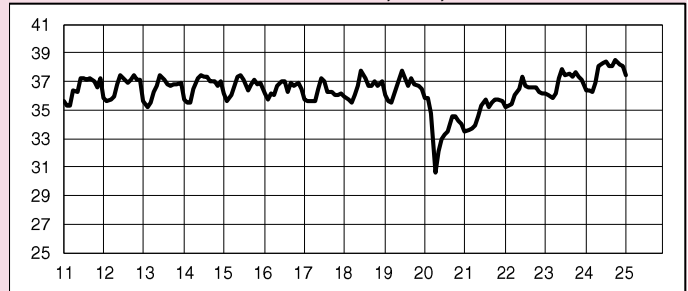
**\*PUTNAM-NORTHEAST LMA EMP., NSA, 000s**



**NEW HAVEN LMA EMP., SA, 000s**



**\*TORRINGTON-NORTHWEST LMA EMP., NSA, 000s**



\* Not seasonally adjusted

-continued from page 2-

Manufacturing Production Index declined for the second year. Gaming slots dropped slightly for two years in a row as well.

### Annual Diffusion Index

An Annual Diffusion Index (ADI) is one way to measure overall economic activity by summarizing all 51 economic indicators on page 3. For each economic indicator, the movement is up, down, or unchanged over the year. Results are reported as a diffusion index that is calculated by subtracting the share of indicators with negative economic movement from the share that moved in a positive economic direction.

For example, out of 51 indicators, 35 (69%) went up and 13 (26%) went down, and three

was unchanged in 2016. The ADI is then calculated by subtracting 26 from 69, resulting in an indicator of 43. If an ADI is positive, then that is generally interpreted as an expansion in economic activity (because more indicators are improving), while negative values are interpreted as a contraction (because more indicators are deteriorating) for that year. As Chart 2 shows, the revised ADI showed another year of continuing growth with an index number of +41 in 2024.

### Looking Ahead

This year is off to a solid start with a 2,300 gain in jobs and a very low unemployment rate in January (3.3%), as the pandemic losses are behind us and our economy is moving forward. All except one labor market areas

added jobs for the fourth year, and employment in many of the industry sectors in Connecticut continued to rise last year. The diffusion index confirms that most indicators were positive in 2024. The largest risk to Connecticut's continued growth is the national economy. Federal changes to tariff policy and persistent inflationary pressure could lead to a national downturn according to some economists, which would impact Connecticut's economy and labor market. Our projections are for continued growth in 2025 based on recent trends and current data. We will be watching the monthly labor situation reports and other indicators carefully to measure the impact of changes at the national level on our outlook. ■

## GENERAL ECONOMIC INDICATORS

<i>(Seasonally adjusted)</i>	4Q 2024	4Q 2023	YoY CHG NO. %		3Q 2024	QoQ CHG NO. %	
<b>General Drift Indicator (2007=100)*</b>							
<b>Leading</b>	114.1	109.6	4.4	4.1	113.9	0.2	0.16
<b>Coincident</b>	98.5	97.3	1.2	1.3	98.1	0.4	0.44
<b>Real Gross Domestic Product**</b> (Millions of chained 2017 dollars)	3Q 2024	3Q 2023	YoY CHG NO. %		2Q 2024	QoQ CHG NO. %	
<b>Connecticut</b>	295,295	287,214	8,081	2.8	293,087	2,209	0.8
<b>United States</b>	23,400,294	22,780,933	619,361	2.7	23,223,906	176,388	0.8
<b>New England</b>	1,207,363	1,172,217	35,147	3.0	1,198,786	8,577	0.7
<b>Per Capita Personal Income**</b> (Current \$, SAAR)	3Q 2024	3Q 2023	YoY CHG NO. %		2Q 2024	QoQ CHG NO. %	
<b>Connecticut</b>	94,754	90,298	4,456	4.9	94,159	595	0.6
<b>United States</b>	73,426	70,140	3,286	4.7	72,964	462	0.6
<b>New England</b>	88,924	84,651	4,273	5.0	88,446	478	0.5
<b>Philadelphia Fed's Coincident Index (2007=100)***</b>	Jan 2025	Jan 2024	YoY CHG NO. %		Dec 2024	MoM CHG NO. %	
<b>Connecticut</b>	NA	NA	NA	NA	NA NA	NA	
<b>United States</b>	NA	NA	NA	NA	NA NA	NA	

Sources: \*Dr. Steven P. Lanza, University of Connecticut, <https://steven-landa.uconn.edu/the-connecticut-green-sheet/>

\*\*U.S. Bureau of Economic Analysis \*\*\*Federal Reserve Bank of Philadelphia

**General Drift Indicators** are composite measures of the four-quarter change in three coincident (Connecticut Manufacturing Production Index, nonfarm employment, and real personal income) and three leading (housing permits, manufacturing average weekly hours, and initial unemployment claims) economic variables, and are indexed so 2007 = 100.

The **Philadelphia Fed's Coincident Index** summarizes current economic condition by using four coincident variables: nonfarm payroll employment, average hours worked in manufacturing, the unemployment rate, and wage and salary disbursements deflated by the consumer price index (U.S. city average).

Total nonfarm  
employment increased  
over the year.

**EMPLOYMENT BY INDUSTRY SECTOR**

	Jan	Jan	CHANGE		Dec
	2025	2024	NO.	%	2024
(Seasonally adjusted; 000s)					
<b>TOTAL NONFARM</b>	1,718.4	1,704.0	14.4	0.8	1,716.1
<b>Natural Res &amp; Mining</b>	0.5	0.4	0.1	25.0	0.5
<b>Construction</b>	62.3	62.5	-0.2	-0.3	63.1
<b>Manufacturing</b>	155.4	157.1	-1.7	-1.1	155.4
<b>Trade, Transportation &amp; Utilities</b>	299.8	299.1	0.7	0.2	299.6
<b>Information</b>	30.4	30.9	-0.5	-1.6	30.5
<b>Financial Activities</b>	119.2	117.8	1.4	1.2	118.6
<b>Professional and Business Services</b>	223.2	221.1	2.1	0.9	221.4
<b>Education and Health Services</b>	371.9	361.8	10.1	2.8	371.7
<b>Leisure and Hospitality</b>	157.0	155.2	1.8	1.2	156.9
<b>Other Services</b>	64.0	63.6	0.4	0.6	64.1
<b>Government*</b>	234.7	234.5	0.2	0.1	234.3

Source: Connecticut Department of Labor \* Includes Native American tribal government employment

Average weekly initial  
claims fell from a year  
ago.

**UNEMPLOYMENT**

	Jan	Jan	CHANGE		Dec
	2025	2024	NO.	%	2024
(Seasonally adjusted)					
<b>Labor Force, resident (000s)</b>	1,957.3	1,926.9	30.4	1.6	1,955.6
<b>Employed (000s)</b>	1,893.4	1,863.3	30.1	1.6	1,893.2
<b>Unemployed (000s)</b>	63.9	63.6	0.3	0.5	62.5
<b>Unemployment Rate (%)</b>	3.3	3.3	0.0	---	3.2
<b>Labor Force Participation Rate (%)</b>	65.0	64.5	0.5	---	65.0
<b>Employment-Population Ratio (%)</b>	62.9	62.4	0.5	---	62.9
<b>Average Weekly Initial Claims (NSA)</b>	4,059	4,239	-180	-4.3	5,495
<b>Avg. Insured Unemp. Rate (% NSA)</b>	2.04	1.99	0.05	---	1.65
	<b>2024</b>	<b>2023</b>			<b>3Q 2024</b>
<b>U-6 Rate (%)</b>	7.1	7.1	0.0	---	7.2

Sources: Connecticut Department of Labor; U.S. Bureau of Labor Statistics

The production worker  
weekly earnings rose over  
the year.

**MANUFACTURING ACTIVITY**

	Jan	Jan	CHANGE		Dec	Nov
	2025	2024	NO.	%	2024	2024
(Not seasonally adjusted)						
<b>Production Worker Avg Wkly Hours</b>	39.4	38.9	0.5	1.3	39.4	--
<b>Prod. Worker Avg Hourly Earnings</b>	31.07	30.63	0.44	1.4	31.66	--
<b>Prod. Worker Avg Weekly Earnings</b>	1,224.16	1,191.51	32.65	2.7	1,247.40	--
<b>CT Mfg. Prod. Index (2012=100)</b>	94.7	93.3	1.36	1.5	92.8	97.6
<b>Production Worker Hours (000s)</b>	3,775	3,765	9	0.2	3,791	--
<b>Industrial Electricity Sales (mil kWh)*</b>	198	199	-1	-0.5	192	207
<b>CT Mfg. Prod. Index, 12-MMA (2012=100)</b>	98.6	99.3	-0.71	-0.7	98.5	98.3

Sources: Connecticut Department of Labor; U.S. Department of Energy

\*Latest two months are forecasted.

Personal income  
increased 5.2 percent  
from a year earlier.

**INCOME**

	3Q	3Q	CHANGE		2Q
	2024	2023	NO.	%	2024
(\$ Millions, SA, annualized)					
<b>Personal Income</b>	\$343,815.4	\$326,784.8	\$17,030.6	5.2	\$341,374.4
<b>Wages and Salaries</b>	\$152,694.1	\$144,588.5	\$8,105.6	5.6	\$151,128.0

Source: Bureau of Economic Analysis



## BUSINESS ACTIVITY

*New auto registrations increased over the year.*

	MONTH	LEVEL	YY %	YEAR TO DATE		%
			CHG	CURRENT	PRIOR	CHG
<b>New Housing Permits*</b>	Jan 2025	290	14.6	290	253	14.6
<b>Electricity Sales (mil kWh)</b>	Dec 2024	2,425	6.0	6,672	6,468	3.2
<b>Construction Contracts Index (1980=100)</b>	Jan 2025	307.9	-43.8	---	---	---
<b>New Auto Registrations</b>	Jan 2025	21,076	18.2	21,076	17,833	18.2
<b>Exports (Bil. \$)</b>	4Q 2024	4.44	7.4	17.38	15.85	9.7
<b>S&amp;P 500: Monthly Close</b>	Jan 2025	6,040.53	24.7	---	---	---

Sources: Connecticut Department of Economic and Community Development; U.S. Department of Energy, Energy Information Administration; Connecticut Department of Revenue Services; F.W. Dodge; Connecticut Department of Motor Vehicles; Wisetrade.org

\* Estimated by the Bureau of the Census

## BUSINESS STARTS AND TERMINATIONS

*Business formation, seasonally adjusted, was down over the year.*

	MO/QTR	LEVEL	YY %	YEAR TO DATE		%
			CHG	CURRENT	PRIOR	CHG
<b>STARTS</b>						
<b>Business Formation, SA</b>	Jan 2025	3,537	-11.6	3,537	3,999	-11.6
<b>Business Formation, NSA</b>	Jan 2025	4,631	-11.6	4,631	5,240	-11.6
<b>Department of Labor, NSA</b>	2Q 2024	4,184	17.2	8,291	8,454	-1.9
<b>TERMINATIONS</b>						
<b>Department of Labor, NSA</b>	2Q 2024	2,032	-18.9	3,923	4,215	-6.9

Sources: U.S. Census Bureau; Connecticut Department of Labor

## STATE REVENUES

*Total all revenues was up from a year ago.*

	Jan	Jan	%	YEAR TO DATE		%
	2025	2024	CHG	CURRENT	PRIOR	CHG
<i>(Millions of dollars)</i>						
<b>TOTAL ALL REVENUES*</b>	2,946.4	2,744.8	7.3	2,946.4	2,744.8	7.3
<b>Corporate Tax</b>	460.5	367.1	25.4	460.5	367.1	25.4
<b>Personal Income Tax</b>	1,423.8	1,213.1	17.4	1,423.8	1,213.1	17.4
<b>Real Estate Conv. Tax</b>	24.9	20.9	19.1	24.9	20.9	19.1
<b>Sales &amp; Use Tax</b>	632.8	756.6	-16.4	632.8	756.6	-16.4
<b>Gaming Payments**</b>	16.0	15.3	4.7	16.0	15.3	4.7

Sources: Connecticut Department of Revenue Services; Division of Special Revenue

\*Includes all sources of revenue; Only selected sources are displayed; Most July receipts are credited to the prior fiscal year and are not shown. \*\*See page 23 for explanation.

## TOURISM AND TRAVEL

*Gaming slots was up over the year.*

	MONTH	LEVEL	YY %	YEAR TO DATE		%
			CHG	CURRENT	PRIOR	CHG
<b>Occupancy Rate (%)*</b>	Jan 2025	48.1	1.1	48.1	47.6	1.1
<b>Tourism Website Visitors</b>	Jan 2025	246,964	-22.2	246,964	317,495	-22.2
<b>Air Passenger Count</b>	Dec 2024	580,219	16.9	6,656,380	6,248,165	6.5
<b>Gaming Slots (Mil.\$)***</b>	Jan 2025	781.8	8.2	781.8	722.8	8.2

Sources: Connecticut Department of Transportation, Bureau of Aviation and Ports; Connecticut Commission on Culture and Tourism; Division of Special Revenue

\*STR, Inc. Due to layoffs, Info Center Visitors data are no longer published.

\*\*\*See page 23 for explanation

Compensation cost for the nation rose 3.6 percent over the year.

**EMPLOYMENT COST INDEX**

Private Industry Workers (Dec. 2005 = 100)	Seasonally Adjusted			Not Seasonally Adjusted		
	Dec	Sep	3-Mo	Dec	Dec	12-Mo
	2024	2024	% Chg	2024	2023	% Chg
<b>UNITED STATES TOTAL</b>	167.7	166.3	0.8	167.4	161.6	3.6
<b>Wages and Salaries</b>	170.4	168.9	0.9	170.2	164.1	3.7
<b>Benefit Costs</b>	161.2	160.1	0.7	160.7	155.5	3.3
<b>NORTHEAST TOTAL</b>	---	---	---	168.4	163.0	3.3
<b>Wages and Salaries</b>	---	---	---	170.0	164.3	3.5

Source: U.S. Department of Labor, Bureau of Labor Statistics

U.S. inflation rate was up by 3.0 percent over the year.

**CONSUMER NEWS**

(Not seasonally adjusted)	MO/QTR	LEVEL	% CHANGE	
			Y/Y	P/P*
<b>CONSUMER PRICES</b>				
<b>CPI-U (1982-84=100)</b>				
<b>U.S. City Average</b>	Jan 2025	317.671	3.0	0.7
<b>Purchasing Power of \$ (1982-84=\$1.00)</b>	Jan 2025	0.315	-2.9	-0.7
<b>Northeast Region</b>	Jan 2025	329.989	3.7	0.8
<b>New York-Newark-Jersey City</b>	Jan 2025	341.144	4.0	0.7
<b>Boston-Cambridge-Newton**</b>	Jan 2025	343.486	3.9	1.5
<b>CPI-W (1982-84=100)</b>				
<b>U.S. City Average</b>	Jan 2025	311.172	3.0	0.7

Source: U.S. Department of Labor, Bureau of Labor Statistics

\*Change over prior monthly or quarterly period

\*\*The Boston CPI can be used as a proxy for New England and is measured every other month.

Conventional mortgage rate rose to 6.96 percent over the month.

**INTEREST RATES**

(Percent)	Jan 2025	Dec 2024	Jan 2024
<b>Prime</b>	7.50	7.65	8.50
<b>Federal Funds</b>	4.33	4.48	5.33
<b>3 Month Treasury Bill</b>	4.34	4.39	5.45
<b>6 Month Treasury Bill</b>	4.26	4.32	5.21
<b>1 Year Treasury Note</b>	4.18	4.23	4.79
<b>3 Year Treasury Note</b>	4.33	4.22	4.11
<b>5 Year Treasury Note</b>	4.43	4.25	3.98
<b>7 Year Treasury Note</b>	4.53	4.32	4.03
<b>10 Year Treasury Note</b>	4.63	4.39	4.06
<b>20 Year Treasury Note</b>	4.92	4.66	4.39
<b>Conventional Mortgage</b>	6.96	6.72	6.64

Sources: Federal Reserve; Federal Home Loan Mortgage Corp.



## NONFARM EMPLOYMENT

All states in the region gained jobs over the year.

(Seasonally adjusted; 000s)	Jan	Jan	CHANGE		Dec
	2025	2024	NO.	%	2024
<b>Connecticut</b>	1,718.4	1,704.0	14.4	0.8	1,716.1
<b>Maine</b>	659.4	656.2	3.2	0.5	658.3
<b>Massachusetts</b>	3,725.4	3,725.0	0.4	0.0	3,722.2
<b>New Hampshire</b>	711.5	702.6	8.9	1.3	711.6
<b>New Jersey</b>	4,387.7	4,351.5	36.2	0.8	4,393.8
<b>New York</b>	9,966.6	9,800.1	166.5	1.7	9,946.5
<b>Pennsylvania</b>	6,190.3	6,114.5	75.8	1.2	6,180.8
<b>Rhode Island</b>	515.1	507.7	7.4	1.5	514.5
<b>Vermont</b>	312.4	311.8	0.6	0.2	311.2
<b>United States</b>	159,069.0	157,049.0	2,020.0	1.3	158,926.0

Source: U.S. Department of Labor, Bureau of Labor Statistics

## LABOR FORCE

All but one states in the region posted increases in the labor force from last year.

(Seasonally adjusted)	Jan	Jan	CHANGE		Dec
	2025	2024	NO.	%	2024
<b>Connecticut</b>	1,957,254	1,926,875	30,379	1.6	1,955,642
<b>Maine</b>	709,836	699,086	10,750	1.5	709,449
<b>Massachusetts</b>	3,926,029	3,861,134	64,895	1.7	3,916,370
<b>New Hampshire</b>	777,003	765,790	11,213	1.5	775,293
<b>New Jersey</b>	4,898,913	4,876,755	22,158	0.5	4,903,331
<b>New York</b>	9,852,809	9,810,679	42,130	0.4	9,853,729
<b>Pennsylvania</b>	6,541,630	6,617,742	-76,112	-1.2	6,548,147
<b>Rhode Island</b>	591,123	587,198	3,925	0.7	591,426
<b>Vermont</b>	357,450	353,890	3,560	1.0	357,262
<b>United States</b>	170,744,000	167,339,000	3,405,000	2.0	168,547,000

Source: U.S. Department of Labor, Bureau of Labor Statistics

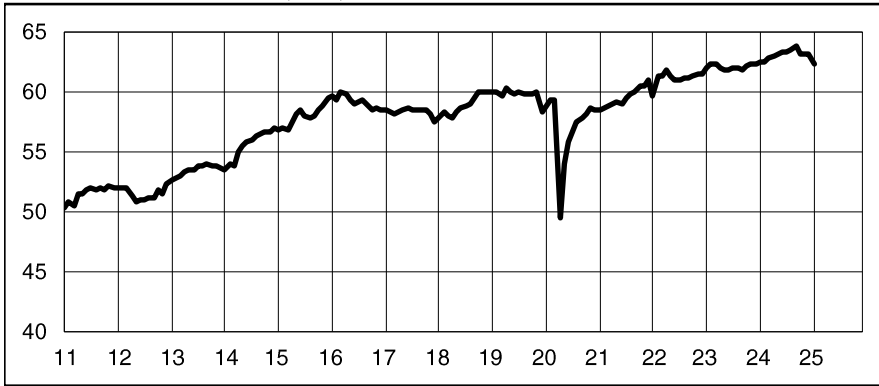
## UNEMPLOYMENT RATES

Eight states showed an increase in its unemployment rate over the year.

(Seasonally adjusted)	Jan	Jan	CHANGE		Dec
	2025	2024			2024
<b>Connecticut</b>	3.3	3.3	0.0		3.2
<b>Maine</b>	3.5	2.8	0.7		3.4
<b>Massachusetts</b>	4.2	3.7	0.5		4.1
<b>New Hampshire</b>	2.9	2.3	0.6		2.8
<b>New Jersey</b>	4.6	4.4	0.2		4.6
<b>New York</b>	4.4	4.2	0.2		4.4
<b>Pennsylvania</b>	3.8	3.7	0.1		3.7
<b>Rhode Island</b>	4.6	3.9	0.7		4.5
<b>Vermont</b>	2.6	2.0	0.6		2.5
<b>United States</b>	4.0	3.7	0.3		4.1

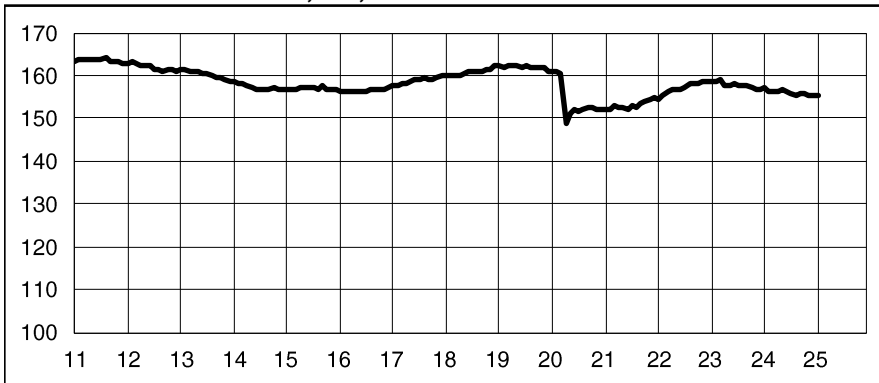
Source: U.S. Department of Labor, Bureau of Labor Statistics

**CONSTRUCTION EMP., SA, 000s**



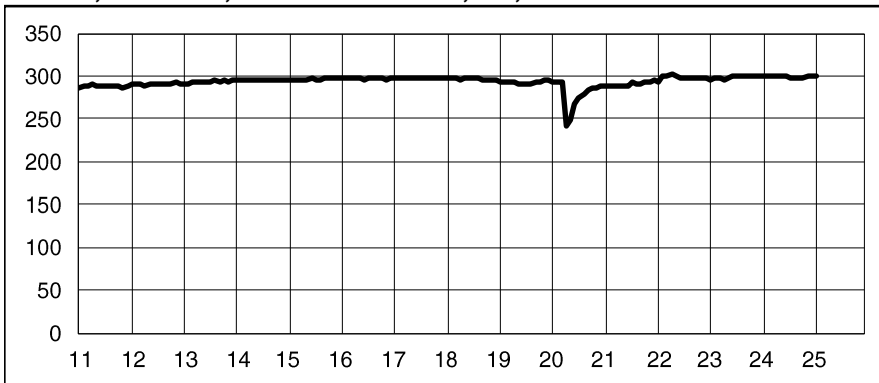
Month	2023	2024	2025
Jan	61.9	62.5	62.3
Feb	62.2	62.5	
Mar	62.2	62.8	
Apr	61.9	63.0	
May	61.7	63.1	
Jun	61.7	63.3	
Jul	62.0	63.3	
Aug	62.0	63.5	
Sep	61.8	63.7	
Oct	62.1	63.1	
Nov	62.2	63.1	
Dec	62.3	63.1	

**MANUFACTURING EMP., SA, 000s**



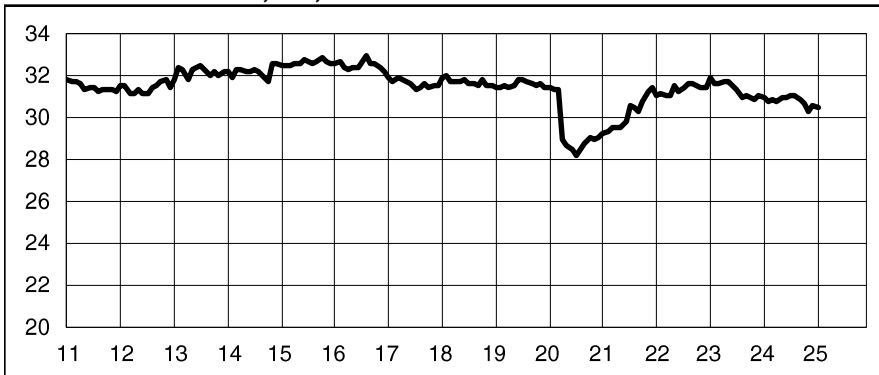
Month	2023	2024	2025
Jan	158.8	157.1	155.4
Feb	158.8	156.3	
Mar	159.0	156.1	
Apr	157.6	156.4	
May	157.7	156.6	
Jun	157.9	156.3	
Jul	157.8	155.8	
Aug	157.8	155.4	
Sep	157.6	155.6	
Oct	157.0	155.7	
Nov	156.7	155.5	
Dec	156.8	155.4	

**TRADE, TRANSP., & UTILITIES EMP., SA, 000s**



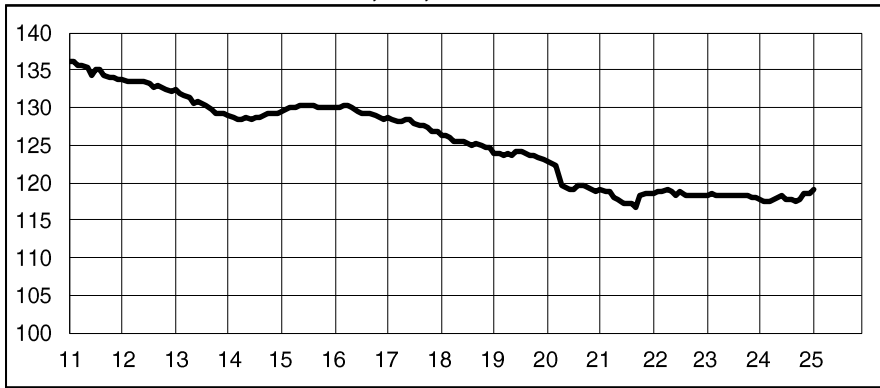
Month	2023	2024	2025
Jan	296.1	299.1	299.8
Feb	297.3	299.2	
Mar	297.8	299.3	
Apr	295.9	298.8	
May	298.4	299.6	
Jun	298.7	298.9	
Jul	300.5	298.3	
Aug	299.9	298.0	
Sep	300.1	298.3	
Oct	299.9	298.3	
Nov	299.9	298.9	
Dec	299.4	299.6	

**INFORMATION EMP., SA, 000s**



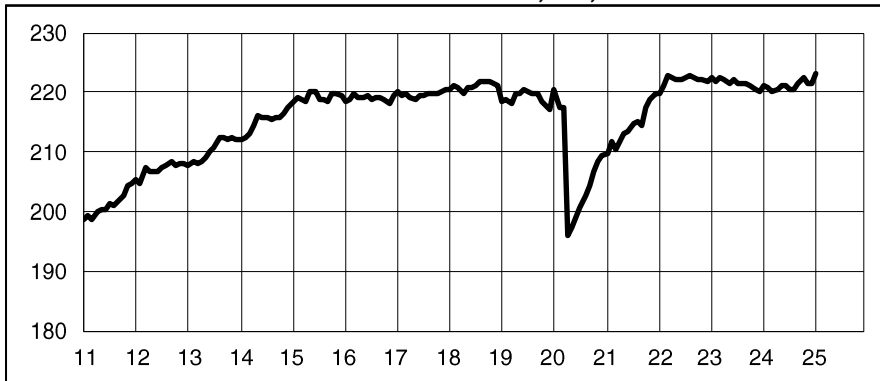
Month	2023	2024	2025
Jan	31.9	30.9	30.4
Feb	31.6	30.7	
Mar	31.6	30.8	
Apr	31.7	30.7	
May	31.7	30.9	
Jun	31.5	30.9	
Jul	31.3	31.0	
Aug	30.9	31.0	
Sep	31.0	30.8	
Oct	30.9	30.6	
Nov	30.8	30.2	
Dec	31.0	30.5	

## FINANCIAL ACTIVITIES EMP., SA, 000s



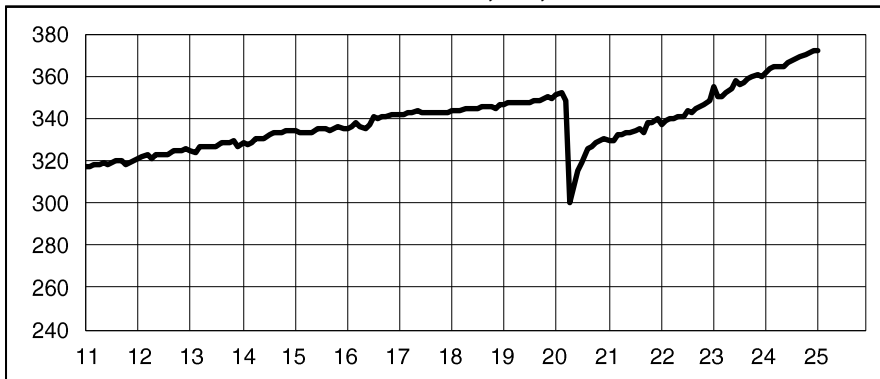
Month	2023	2024	2025
Jan	118.3	117.8	119.2
Feb	118.5	117.6	
Mar	118.4	117.6	
Apr	118.3	117.7	
May	118.3	117.9	
Jun	118.4	118.2	
Jul	118.3	117.8	
Aug	118.3	117.7	
Sep	118.3	117.4	
Oct	118.2	117.8	
Nov	118.0	118.5	
Dec	118.1	118.6	

## PROFESSIONAL & BUSINESS SERV. EMP., SA, 000s



Month	2023	2024	2025
Jan	222.5	221.1	223.2
Feb	221.9	220.9	
Mar	222.5	220.2	
Apr	222.0	220.5	
May	221.6	221.1	
Jun	222.1	221.1	
Jul	221.3	220.6	
Aug	221.5	220.3	
Sep	221.4	221.3	
Oct	221.0	222.4	
Nov	220.3	221.6	
Dec	220.0	221.4	

## EDUCATIONAL & HEALTH SERV. EMP., SA, 000s



Month	2023	2024	2025
Jan	354.5	361.8	371.9
Feb	350.3	363.3	
Mar	350.1	364.4	
Apr	352.4	364.5	
May	353.6	364.8	
Jun	357.9	366.1	
Jul	356.0	367.3	
Aug	356.6	368.2	
Sep	358.6	368.9	
Oct	359.5	370.0	
Nov	360.6	370.8	
Dec	360.1	371.7	

## GOVERNMENT EMP., SA, 000s



Month	2023	2024	2025
Jan	230.4	234.5	234.7
Feb	230.9	234.1	
Mar	231.2	234.9	
Apr	230.5	236.6	
May	232.8	235.3	
Jun	233.9	236.3	
Jul	232.9	236.5	
Aug	233.8	236.0	
Sep	233.4	235.2	
Oct	233.8	234.3	
Nov	233.6	234.4	
Dec	233.7	234.3	

\*Includes Indian tribal government employment

**CONNECTICUT***Not Seasonally Adjusted*

	Jan 2025	Jan 2024	CHANGE		Dec 2024
			NO.	%	
<b>TOTAL NONFARM EMPLOYMENT.....</b>	<b>1,691,200</b>	<b>1,678,400</b>	<b>12,800</b>	<b>0.8</b>	<b>1,729,400</b>
<b>TOTAL PRIVATE.....</b>	<b>1,455,100</b>	<b>1,441,900</b>	<b>13,200</b>	<b>0.9</b>	<b>1,491,400</b>
<b>GOODS PRODUCING INDUSTRIES.....</b>	<b>212,300</b>	<b>214,100</b>	<b>-1,800</b>	<b>-0.8</b>	<b>219,000</b>
<b>CONSTRUCTION, NAT. RES. &amp; MINING.....</b>	<b>57,500</b>	<b>58,200</b>	<b>-700</b>	<b>-1.2</b>	<b>62,900</b>
<b>MANUFACTURING.....</b>	<b>154,800</b>	<b>155,900</b>	<b>-1,100</b>	<b>-0.7</b>	<b>156,100</b>
<b>Durable Goods.....</b>	<b>121,600</b>	<b>122,500</b>	<b>-900</b>	<b>-0.7</b>	<b>122,500</b>
Fabricated Metal.....	26,700	27,000	-300	-1.1	27,000
Machinery.....	13,000	13,300	-300	-2.3	13,100
Computer and Electronic Product.....	9,900	10,200	-300	-2.9	10,000
Transportation Equipment.....	47,400	47,700	-300	-0.6	47,600
Aerospace Product and Parts.....	28,800	29,700	-900	-3.0	29,000
<b>Non-Durable Goods.....</b>	<b>33,200</b>	<b>33,400</b>	<b>-200</b>	<b>-0.6</b>	<b>33,600</b>
Chemical.....	7,500	7,800	-300	-3.8	7,500
<b>SERVICE PROVIDING INDUSTRIES.....</b>	<b>1,478,900</b>	<b>1,464,300</b>	<b>14,600</b>	<b>1.0</b>	<b>1,510,400</b>
<b>TRADE, TRANSPORTATION, UTILITIES.....</b>	<b>300,500</b>	<b>301,000</b>	<b>-500</b>	<b>-0.2</b>	<b>312,400</b>
Wholesale Trade.....	61,100	60,600	500	0.8	61,500
Retail Trade.....	164,300	166,600	-2,300	-1.4	171,400
Motor Vehicle and Parts Dealers.....	21,500	21,300	200	0.9	21,900
Building Material.....	14,800	14,700	100	0.7	15,400
Food and Beverage Stores.....	40,900	41,100	-200	-0.5	41,600
General Merchandise Stores.....	29,000	30,100	-1,100	-3.7	31,300
Transportation, Warehousing, & Utilities....	75,100	73,800	1,300	1.8	79,500
Utilities.....	5,300	5,200	100	1.9	5,300
Transportation and Warehousing.....	69,800	68,600	1,200	1.7	74,200
<b>INFORMATION.....</b>	<b>30,300</b>	<b>30,700</b>	<b>-400</b>	<b>-1.3</b>	<b>30,500</b>
Telecommunications.....	5,700	6,000	-300	-5.0	5,800
<b>FINANCIAL ACTIVITIES.....</b>	<b>118,900</b>	<b>117,100</b>	<b>1,800</b>	<b>1.5</b>	<b>118,800</b>
Finance and Insurance.....	99,200	97,800	1,400	1.4	98,900
Credit Intermediation and Related.....	19,800	19,700	100	0.5	19,700
Financial Investments and Related.....	23,600	22,900	700	3.1	23,600
Insurance Carriers & Related Activities....	55,800	55,200	600	1.1	55,600
Real Estate and Rental and Leasing.....	19,700	19,300	400	2.1	19,900
<b>PROFESSIONAL &amp; BUSINESS SERVICES.....</b>	<b>215,800</b>	<b>214,700</b>	<b>1,100</b>	<b>0.5</b>	<b>220,100</b>
Professional, Scientific.....	101,900	100,600	1,300	1.3	101,000
Legal Services.....	12,100	11,600	500	4.3	12,000
Computer Systems Design.....	21,500	21,900	-400	-1.8	21,400
Management of Companies.....	30,900	30,700	200	0.7	31,000
Administrative and Support.....	83,000	83,400	-400	-0.5	88,100
Employment Services.....	23,300	24,900	-1,600	-6.4	25,000
<b>EDUCATION AND HEALTH SERVICES.....</b>	<b>368,700</b>	<b>357,800</b>	<b>10,900</b>	<b>3.0</b>	<b>375,000</b>
Educational Services.....	72,000	70,100	1,900	2.7	76,500
Health Care and Social Assistance.....	296,700	287,700	9,000	3.1	298,500
Hospitals.....	66,700	64,600	2,100	3.3	66,500
Nursing & Residential Care Facilities.....	57,800	55,500	2,300	4.1	58,500
Social Assistance.....	73,000	70,400	2,600	3.7	74,000
<b>LEISURE AND HOSPITALITY.....</b>	<b>145,100</b>	<b>144,100</b>	<b>1,000</b>	<b>0.7</b>	<b>151,600</b>
Arts, Entertainment, and Recreation.....	23,000	23,100	-100	-0.4	24,800
Accommodation and Food Services.....	122,100	121,000	1,100	0.9	126,800
Food Serv., Restaurants, Drinking Places.	113,500	112,400	1,100	1.0	117,800
<b>OTHER SERVICES.....</b>	<b>63,500</b>	<b>62,400</b>	<b>1,100</b>	<b>1.8</b>	<b>64,000</b>
<b>GOVERNMENT.....</b>	<b>236,100</b>	<b>236,500</b>	<b>-400</b>	<b>-0.2</b>	<b>238,000</b>
Federal Government.....	18,400	18,700	-300	-1.6	18,500
State Government.....	73,100	72,700	400	0.6	74,200
Local Government.....	144,600	145,100	-500	-0.3	145,300

*Current month's data are preliminary. Prior months' data have been revised. All data are benchmarked to March 2024.*

## BRIDGEPORT- STAMFORD- DANBURY LMA

Not Seasonally Adjusted

	Jan	Jan	CHANGE		Dec
	2025	2024	NO.	%	2024
<b>TOTAL NONFARM EMPLOYMENT</b> .....	<b>403,400</b>	<b>399,100</b>	<b>4,300</b>	<b>1.1</b>	<b>411,600</b>
<b>TOTAL PRIVATE</b> .....	<b>358,400</b>	<b>354,200</b>	<b>4,200</b>	<b>1.2</b>	<b>366,500</b>
<b>GOODS PRODUCING INDUSTRIES</b> .....	<b>39,500</b>	<b>40,300</b>	<b>-800</b>	<b>-2.0</b>	<b>40,900</b>
<b>CONSTRUCTION, NAT. RES. &amp; MINING</b> .....	<b>12,800</b>	<b>13,000</b>	<b>-200</b>	<b>-1.5</b>	<b>13,900</b>
<b>MANUFACTURING</b> .....	<b>26,700</b>	<b>27,300</b>	<b>-600</b>	<b>-2.2</b>	<b>27,000</b>
Durable Goods.....	19,600	20,300	-700	-3.4	19,800
<b>SERVICE PROVIDING INDUSTRIES</b> .....	<b>363,900</b>	<b>358,800</b>	<b>5,100</b>	<b>1.4</b>	<b>370,700</b>
<b>TRADE, TRANSPORTATION, UTILITIES</b> .....	<b>68,400</b>	<b>68,500</b>	<b>-100</b>	<b>-0.1</b>	<b>71,900</b>
Wholesale Trade.....	13,700	13,400	300	2.2	13,800
Retail Trade.....	43,900	44,600	-700	-1.6	46,400
Transportation, Warehousing, & Utilities....	10,800	10,500	300	2.9	11,700
<b>INFORMATION</b> .....	<b>12,500</b>	<b>12,900</b>	<b>-400</b>	<b>-3.1</b>	<b>12,700</b>
<b>FINANCIAL ACTIVITIES</b> .....	<b>35,300</b>	<b>34,200</b>	<b>1,100</b>	<b>3.2</b>	<b>34,800</b>
Finance and Insurance.....	29,800	28,900	900	3.1	29,400
Credit Intermediation and Related.....	7,100	7,000	100	1.4	7,000
Financial Investments and Related.....	17,100	16,400	700	4.3	17,000
<b>PROFESSIONAL &amp; BUSINESS SERVICES</b>	<b>59,400</b>	<b>58,000</b>	<b>1,400</b>	<b>2.4</b>	<b>60,200</b>
Professional, Scientific.....	29,600	29,200	400	1.4	29,100
Administrative and Support.....	19,200	18,500	700	3.8	20,900
<b>EDUCATION AND HEALTH SERVICES</b> .....	<b>84,200</b>	<b>81,500</b>	<b>2,700</b>	<b>3.3</b>	<b>85,400</b>
Health Care and Social Assistance.....	70,500	68,500	2,000	2.9	70,900
<b>LEISURE AND HOSPITALITY</b> .....	<b>41,000</b>	<b>40,800</b>	<b>200</b>	<b>0.5</b>	<b>42,400</b>
Accommodation and Food Services.....	32,300	32,200	100	0.3	33,100
<b>OTHER SERVICES</b> .....	<b>18,100</b>	<b>18,000</b>	<b>100</b>	<b>0.6</b>	<b>18,200</b>
<b>GOVERNMENT</b> .....	<b>45,000</b>	<b>44,900</b>	<b>100</b>	<b>0.2</b>	<b>45,100</b>
Federal.....	2,600	2,700	-100	-3.7	2,600
State & Local.....	42,400	42,200	200	0.5	42,500

Current month's data are preliminary. Prior months' data have been revised. All data are benchmarked to March 2024.

**HARTFORD-  
WEST HARTFORD-  
EAST HARTFORD LMA**

	Jan	Jan	CHANGE		Dec
	2025	2024	NO.	%	2024
<b>TOTAL NONFARM EMPLOYMENT</b> .....	<b>602,000</b>	<b>598,900</b>	<b>3,100</b>	<b>0.5</b>	<b>616,600</b>
<b>TOTAL PRIVATE</b> .....	<b>504,300</b>	<b>501,000</b>	<b>3,300</b>	<b>0.7</b>	<b>516,900</b>
<b>GOODS PRODUCING INDUSTRIES</b> .....	<b>80,100</b>	<b>81,000</b>	<b>-900</b>	<b>-1.1</b>	<b>81,800</b>
<b>CONSTRUCTION, NAT. RES. &amp; MINING</b> .....	<b>20,400</b>	<b>21,500</b>	<b>-1,100</b>	<b>-5.1</b>	<b>22,200</b>
<b>MANUFACTURING</b> .....	<b>59,700</b>	<b>59,500</b>	<b>200</b>	<b>0.3</b>	<b>59,600</b>
Durable Goods.....	49,400	49,000	400	0.8	49,300
Non-Durable Goods.....	10,300	10,500	-200	-1.9	10,300
<b>SERVICE PROVIDING INDUSTRIES</b> .....	<b>521,900</b>	<b>517,900</b>	<b>4,000</b>	<b>0.8</b>	<b>534,800</b>
<b>TRADE, TRANSPORTATION, UTILITIES</b> .....	<b>101,700</b>	<b>101,700</b>	<b>0</b>	<b>0.0</b>	<b>105,100</b>
Wholesale Trade.....	19,600	19,100	500	2.6	19,600
Retail Trade.....	52,800	53,500	-700	-1.3	54,700
Transportation, Warehousing, & Utilities....	29,300	29,100	200	0.7	30,800
Transportation and Warehousing.....	28,300	28,100	200	0.7	29,800
<b>INFORMATION</b> .....	<b>5,600</b>	<b>5,800</b>	<b>-200</b>	<b>-3.4</b>	<b>5,800</b>
<b>FINANCIAL ACTIVITIES</b> .....	<b>51,800</b>	<b>51,900</b>	<b>-100</b>	<b>-0.2</b>	<b>52,400</b>
Depository Credit Institutions.....	4,700	4,700	0	0.0	4,700
Insurance Carriers & Related Activities....	35,700	35,900	-200	-0.6	36,200
<b>PROFESSIONAL &amp; BUSINESS SERVICES</b>	<b>76,500</b>	<b>76,400</b>	<b>100</b>	<b>0.1</b>	<b>78,800</b>
Professional, Scientific.....	37,600	37,100	500	1.3	37,500
Management of Companies.....	13,000	12,500	500	4.0	13,100
Administrative and Support.....	25,900	26,800	-900	-3.4	28,200
<b>EDUCATION AND HEALTH SERVICES</b> .....	<b>118,300</b>	<b>114,000</b>	<b>4,300</b>	<b>3.8</b>	<b>119,700</b>
Educational Services.....	15,000	14,100	900	6.4	15,800
Health Care and Social Assistance.....	103,300	99,900	3,400	3.4	103,900
Ambulatory Health Care.....	34,700	33,900	800	2.4	34,900
<b>LEISURE AND HOSPITALITY</b> .....	<b>46,800</b>	<b>47,300</b>	<b>-500</b>	<b>-1.1</b>	<b>49,600</b>
Accommodation and Food Services.....	41,000	40,500	500	1.2	42,700
<b>OTHER SERVICES</b> .....	<b>23,500</b>	<b>22,900</b>	<b>600</b>	<b>2.6</b>	<b>23,700</b>
<b>GOVERNMENT</b> .....	<b>97,700</b>	<b>97,900</b>	<b>-200</b>	<b>-0.2</b>	<b>99,700</b>
Federal.....	5,700	5,900	-200	-3.4	5,700
State & Local.....	92,000	92,000	0	0.0	94,000

Current month's data are preliminary. Prior months' data have been revised. All data are benchmarked to March 2024.



## NEW HAVEN LMA

	Jan	Jan	CHANGE		Dec
	2025	2024	NO.	%	2024
<b>TOTAL NONFARM EMPLOYMENT</b> .....	<b>290,000</b>	<b>288,200</b>	<b>1,800</b>	<b>0.6</b>	<b>298,600</b>
<b>TOTAL PRIVATE</b> .....	<b>256,300</b>	<b>253,700</b>	<b>2,600</b>	<b>1.0</b>	<b>264,600</b>
<b>GOODS PRODUCING INDUSTRIES</b> .....	<b>29,300</b>	<b>28,700</b>	<b>600</b>	<b>2.1</b>	<b>30,300</b>
<b>CONSTRUCTION, NAT. RES. &amp; MINING</b> .....	<b>9,600</b>	<b>9,200</b>	<b>400</b>	<b>4.3</b>	<b>10,400</b>
<b>MANUFACTURING</b> .....	<b>19,700</b>	<b>19,500</b>	<b>200</b>	<b>1.0</b>	<b>19,900</b>
Durable Goods.....	13,700	13,800	-100	-0.7	13,800
<b>SERVICE PROVIDING INDUSTRIES</b> .....	<b>260,700</b>	<b>259,500</b>	<b>1,200</b>	<b>0.5</b>	<b>268,300</b>
<b>TRADE, TRANSPORTATION, UTILITIES</b> .....	<b>58,200</b>	<b>58,200</b>	<b>0</b>	<b>0.0</b>	<b>61,000</b>
Wholesale Trade.....	10,100	10,200	-100	-1.0	10,200
Retail Trade.....	25,900	26,600	-700	-2.6	27,100
Transportation, Warehousing, & Utilities.....	22,200	21,400	800	3.7	23,700
<b>INFORMATION</b> .....	<b>3,300</b>	<b>3,400</b>	<b>-100</b>	<b>-2.9</b>	<b>3,400</b>
<b>FINANCIAL ACTIVITIES</b> .....	<b>10,800</b>	<b>10,900</b>	<b>-100</b>	<b>-0.9</b>	<b>10,800</b>
Finance and Insurance.....	6,700	6,900	-200	-2.9	6,700
<b>PROFESSIONAL &amp; BUSINESS SERVICES</b> .....	<b>31,900</b>	<b>32,000</b>	<b>-100</b>	<b>-0.3</b>	<b>32,400</b>
Administrative and Support.....	15,400	16,300	-900	-5.5	16,300
<b>EDUCATION AND HEALTH SERVICES</b> .....	<b>89,900</b>	<b>87,300</b>	<b>2,600</b>	<b>3.0</b>	<b>92,100</b>
Educational Services.....	33,800	33,200	600	1.8	36,300
Health Care and Social Assistance.....	56,100	54,100	2,000	3.7	55,800
<b>LEISURE AND HOSPITALITY</b> .....	<b>22,400</b>	<b>22,600</b>	<b>-200</b>	<b>-0.9</b>	<b>23,900</b>
Accommodation and Food Services.....	19,500	19,500	0	0.0	20,500
<b>OTHER SERVICES</b> .....	<b>10,500</b>	<b>10,600</b>	<b>-100</b>	<b>-0.9</b>	<b>10,700</b>
<b>GOVERNMENT</b> .....	<b>33,700</b>	<b>34,500</b>	<b>-800</b>	<b>-2.3</b>	<b>34,000</b>
Federal.....	4,900	5,100	-200	-3.9	4,900
State & Local.....	28,800	29,400	-600	-2.0	29,100

Current month's data are preliminary. Prior months' data have been revised. All data are benchmarked to March 2024.

## HELP WANTED ONLINE

### Connecticut HWOL: January 2025

Workforce Area	January	Industry Sector	Ads	Occupation	Ads
	2025				
	Total Ads	With Most Ads	Count	With Most Ads	Count
Eastern	6,400	Health Care and Social Assistance	1,573	Registered Nurses	374
North Central	27,200	Health Care and Social Assistance	5,071	Registered Nurses	1,473
Northwest	10,570	Health Care and Social Assistance	3,070	Registered Nurses	798
South Central	13,372	Health Care and Social Assistance	3,271	Registered Nurses	963
Southwest	17,389	Health Care and Social Assistance	3,129	Registered Nurses	894

Source: CT DOL Research Office Analysis of HWOL Data Series

The Conference Board Help Wanted OnLine Data Series (HWOL) measures the number of new, first-time online jobs and jobs reposted from the previous month for over 16,000 Internet job boards, corporate boards and smaller job sites that serve niche markets and smaller geographic areas. The data can be used as a real-time measure of labor demand. For more information go to <https://www1.ctdol.state.ct.us/lmi/hwol.asp>.

**NORWICH-NEW LONDON-  
WILLIMANTIC LMA**

	Jan	Jan	CHANGE		Dec
	2025	2024	NO.	%	2024
<b>TOTAL NONFARM EMPLOYMENT</b> .....	<b>126,900</b>	<b>124,800</b>	<b>2,100</b>	<b>1.7</b>	<b>128,700</b>
<b>TOTAL PRIVATE</b> .....	<b>99,400</b>	<b>97,300</b>	<b>2,100</b>	<b>2.2</b>	<b>101,300</b>
<b>GOODS PRODUCING INDUSTRIES</b> .....	<b>24,700</b>	<b>24,200</b>	<b>500</b>	<b>2.1</b>	<b>25,000</b>
<b>CONSTRUCTION, NAT. RES. &amp; MINING</b> .....	<b>3,300</b>	<b>3,500</b>	<b>-200</b>	<b>-5.7</b>	<b>3,500</b>
<b>MANUFACTURING</b> .....	<b>21,400</b>	<b>20,700</b>	<b>700</b>	<b>3.4</b>	<b>21,500</b>
Durable Goods.....	18,400	17,700	700	4.0	18,500
Non-Durable Goods.....	3,000	3,000	0	0.0	3,000
<b>SERVICE PROVIDING INDUSTRIES</b> .....	<b>102,200</b>	<b>100,600</b>	<b>1,600</b>	<b>1.6</b>	<b>103,700</b>
<b>TRADE, TRANSPORTATION, UTILITIES</b> .....	<b>20,600</b>	<b>20,700</b>	<b>-100</b>	<b>-0.5</b>	<b>21,400</b>
Wholesale Trade.....	2,600	2,600	0	0.0	2,600
Retail Trade.....	14,000	14,200	-200	-1.4	14,600
Transportation, Warehousing, & Utilities....	4,000	3,900	100	2.6	4,200
<b>INFORMATION</b> .....	<b>1,300</b>	<b>1,300</b>	<b>0</b>	<b>0.0</b>	<b>1,300</b>
<b>FINANCIAL ACTIVITIES</b> .....	<b>2,600</b>	<b>2,600</b>	<b>0</b>	<b>0.0</b>	<b>2,600</b>
<b>PROFESSIONAL &amp; BUSINESS SERVICES</b>	<b>10,000</b>	<b>9,400</b>	<b>600</b>	<b>6.4</b>	<b>10,200</b>
<b>EDUCATION AND HEALTH SERVICES</b> .....	<b>23,500</b>	<b>22,700</b>	<b>800</b>	<b>3.5</b>	<b>23,600</b>
Health Care and Social Assistance.....	20,400	19,800	600	3.0	20,500
<b>LEISURE AND HOSPITALITY</b> .....	<b>13,500</b>	<b>13,400</b>	<b>100</b>	<b>0.7</b>	<b>14,000</b>
Accommodation and Food Services.....	11,800	11,700	100	0.9	12,300
Food Serv., Restaurants, Drinking Places.	10,500	10,400	100	1.0	10,900
<b>OTHER SERVICES</b> .....	<b>3,200</b>	<b>3,000</b>	<b>200</b>	<b>6.7</b>	<b>3,200</b>
<b>GOVERNMENT</b> .....	<b>27,500</b>	<b>27,500</b>	<b>0</b>	<b>0.0</b>	<b>27,400</b>
Federal.....	2,800	2,900	-100	-3.4	2,800
State & Local.....	24,700	24,600	100	0.4	24,600

**WATERBURY-  
SHELTON LMA**

	Jan	Jan	CHANGE		Dec
	2025	2024	NO.	%	2024
<b>TOTAL NONFARM EMPLOYMENT</b> .....	<b>160,100</b>	<b>158,400</b>	<b>1,700</b>	<b>1.1</b>	<b>163,700</b>
<b>TOTAL PRIVATE</b> .....	<b>138,900</b>	<b>137,800</b>	<b>1,100</b>	<b>0.8</b>	<b>142,400</b>
<b>GOODS PRODUCING INDUSTRIES</b> .....	<b>25,200</b>	<b>25,400</b>	<b>-200</b>	<b>-0.8</b>	<b>26,100</b>
<b>CONSTRUCTION, NAT. RES. &amp; MINING</b> .....	<b>7,500</b>	<b>6,800</b>	<b>700</b>	<b>10.3</b>	<b>8,100</b>
<b>MANUFACTURING</b> .....	<b>17,700</b>	<b>18,600</b>	<b>-900</b>	<b>-4.8</b>	<b>18,000</b>
<b>SERVICE PROVIDING INDUSTRIES</b> .....	<b>134,900</b>	<b>133,000</b>	<b>1,900</b>	<b>1.4</b>	<b>137,600</b>
<b>TRADE, TRANSPORTATION, UTILITIES</b> .....	<b>30,800</b>	<b>30,900</b>	<b>-100</b>	<b>-0.3</b>	<b>31,800</b>
Wholesale Trade.....	6,600	6,500	100	1.5	6,700
Retail Trade.....	18,600	18,600	0	0.0	19,200
Transportation, Warehousing, & Utilities....	5,600	5,800	-200	-3.4	5,900
<b>INFORMATION</b> .....	<b>4,600</b>	<b>4,700</b>	<b>-100</b>	<b>-2.1</b>	<b>4,600</b>
<b>FINANCIAL ACTIVITIES</b> .....	<b>5,400</b>	<b>5,400</b>	<b>0</b>	<b>0.0</b>	<b>5,500</b>
<b>PROFESSIONAL &amp; BUSINESS SERVICES</b>	<b>18,500</b>	<b>18,500</b>	<b>0</b>	<b>0.0</b>	<b>19,000</b>
<b>EDUCATION AND HEALTH SERVICES</b> .....	<b>36,300</b>	<b>35,100</b>	<b>1,200</b>	<b>3.4</b>	<b>36,800</b>
Health Care and Social Assistance.....	33,300	32,300	1,000	3.1	33,700
<b>LEISURE AND HOSPITALITY</b> .....	<b>12,900</b>	<b>12,800</b>	<b>100</b>	<b>0.8</b>	<b>13,400</b>
<b>OTHER SERVICES</b> .....	<b>5,200</b>	<b>5,000</b>	<b>200</b>	<b>4.0</b>	<b>5,200</b>
<b>GOVERNMENT</b> .....	<b>21,200</b>	<b>20,600</b>	<b>600</b>	<b>2.9</b>	<b>21,300</b>
Federal.....	800	800	0	0.0	800
State & Local.....	20,400	19,800	600	3.0	20,500

*Current month's data are preliminary. Prior months' data have been revised. All data are benchmarked to March 2024.*

## MICROPOLITAN AREAS

	Jan 2025	Jan 2024	CHANGE		Dec 2024
			NO.	%	
<b>TOTAL NONFARM EMPLOYMENT</b>					
PUTNAM-NORTHEAST .....	28,300	28,700	-400	-1.4	28,800
TORRINGTON-NORTHWEST .....	37,400	36,400	1,000	2.7	38,100

NOTE: More industry detail data is available for the State and its five metropolitan and two micropolitan areas at: <http://www.ctdol.state.ct.us/lmi/202/covered.htm>. The data published there differ from the data in the preceding tables in that they are developed from a near-universe count of Connecticut employment covered by the unemployment insurance (UI) program, while the data here is sample-based. The data drawn from the UI program does not contain estimates of employment not covered by unemployment insurance, and is lagged several months behind the current employment estimates presented here.

## SEASONALLY ADJUSTED TOTAL NONFARM EMPLOYMENT

Labor Market Areas	Jan 2025	Jan 2024	CHANGE		Dec 2024
			NO.	%	
BRIDGEPORT-STAMFORD-DANBURY.....	410,900	407,400	3,500	0.9	410,500
HARTFORD-W.HARTFORD-E.HARTFORD.....	609,000	607,500	1,500	0.2	610,600
NEW HAVEN LMA.....	295,900	293,000	2,900	1.0	295,700
NORWICH-NEW LONDON-WILLIMANTIC.....	128,600	126,800	1,800	1.4	128,300
WATERBURY-SHELTON.....	162,000	160,600	1,400	0.9	162,100
PUTNAM-NORTHEAST*.....	28,300	28,700	-400	-1.4	28,800
TORRINGTON-NORTHWEST*.....	37,400	36,400	1,000	2.7	38,100

\* Not seasonally adjusted

Current month's data are preliminary. Prior months' data have been revised. All data are benchmarked to March 2024.

Labor Market Area <i>(Not seasonally adjusted)</i>	EMPLOYMENT STATUS	Jan	Jan	CHANGE		Dec
		2025	2024	NO.	%	2024
<b>CONNECTICUT</b>	Civilian Labor Force	1,947,800	1,919,800	28,000	1.5	1,953,700
	Employed	1,870,200	1,847,900	22,300	1.2	1,900,900
	Unemployed	77,600	71,900	5,700	7.9	52,800
	Unemployment Rate	4.0	3.7	0.3	---	2.7
<b>Bridgeport-Stamford-Danbury</b>	Civilian Labor Force	517,400	507,300	10,100	2.0	518,400
	Employed	497,800	489,100	8,700	1.8	505,000
	Unemployed	19,600	18,200	1,400	7.7	13,400
	Unemployment Rate	3.8	3.6	0.2	---	2.6
<b>Hartford-W.Hartford-E.Hartford</b>	Civilian Labor Force	614,300	607,700	6,600	1.1	616,600
	Employed	590,000	585,300	4,700	0.8	599,800
	Unemployed	24,300	22,400	1,900	8.5	16,800
	Unemployment Rate	4.0	3.7	0.3	---	2.7
<b>New Haven</b>	Civilian Labor Force	316,700	312,900	3,800	1.2	318,900
	Employed	304,400	301,500	2,900	1.0	310,500
	Unemployed	12,300	11,400	900	7.9	8,400
	Unemployment Rate	3.9	3.6	0.3	---	2.6
<b>Norwich-New London-Willimantic</b>	Civilian Labor Force	144,000	141,400	2,600	1.8	143,600
	Employed	138,300	136,200	2,100	1.5	139,800
	Unemployed	5,700	5,200	500	9.6	3,800
	Unemployment Rate	3.9	3.7	0.2	---	2.6
<b>Putnam-Northeast</b>	Civilian Labor Force	42,200	42,100	100	0.2	42,400
	Employed	40,400	40,600	-200	-0.5	41,200
	Unemployed	1,800	1,600	200	12.5	1,200
	Unemployment Rate	4.3	3.7	0.6	---	2.8
<b>Torrington-Northwest</b>	Civilian Labor Force	46,400	45,400	1,000	2.2	46,800
	Employed	44,500	43,600	900	2.1	45,600
	Unemployed	1,900	1,700	200	11.8	1,200
	Unemployment Rate	4.1	3.8	0.3	---	2.5
<b>Waterbury-Shelton</b>	Civilian Labor Force	242,200	238,700	3,500	1.5	242,200
	Employed	231,100	228,200	2,900	1.3	234,700
	Unemployed	11,100	10,500	600	5.7	7,500
	Unemployment Rate	4.6	4.4	0.2	---	3.1
<b>UNITED STATES</b>	Civilian Labor Force	169,814,000	166,428,000	3,386,000	2.0	167,746,000
	Employed	162,347,000	159,650,000	2,697,000	1.7	161,294,000
	Unemployed	7,467,000	6,778,000	689,000	10.2	6,452,000
	Unemployment Rate	4.4	4.1	0.3	---	3.8

Current month's data are preliminary. Prior months' data have been revised. All data are benchmarked to March 2024.

	AVG WEEKLY EARNINGS				AVG WEEKLY HOURS				AVG HOURLY EARNINGS			
	Jan		CHG	Dec	Jan		CHG	Dec	Jan		CHG	Dec
	2025	2024	Y/Y	2024	2025	2024	Y/Y	2024	2025	2024	Y/Y	2024
<i>(Not seasonally adjusted)</i>												
<b>PRODUCTION WORKER</b>												
<b>MANUFACTURING</b>	\$1,224.16	\$1,191.51	\$32.65	\$1,247.40	39.4	38.9	0.5	39.4	\$31.07	\$30.63	\$0.44	\$31.66
<b>DURABLE GOODS</b>	1,305.72	1,279.10	26.62	1,311.16	39.0	39.2	-0.2	38.7	33.48	32.63	0.85	33.88
<b>NON-DUR. GOODS</b>	992.99	940.48	52.51	1,064.48	40.3	38.2	2.1	41.5	24.64	24.62	0.02	25.65
<b>CONSTRUCTION</b>	1,562.22	1,445.14	117.08	1,560.21	39.6	37.4	2.2	39.3	39.45	38.64	0.81	39.70
<b>ALL EMPLOYEES</b>												
<b>STATEWIDE</b>												
<b>TOTAL PRIVATE</b>	1,292.81	1,230.06	62.75	1,311.78	33.2	33.2	0.0	33.8	38.94	37.05	1.89	38.81
<b>GOODS PRODUCING</b>	1,556.70	1,488.03	68.67	1,563.39	39.5	39.2	0.3	39.4	39.41	37.96	1.45	39.68
Construction	1,625.79	1,478.99	146.80	1,590.19	38.2	36.8	1.4	37.7	42.56	40.19	2.37	42.18
Manufacturing	1,506.56	1,467.81	38.75	1,517.33	40.1	39.1	1.0	39.7	37.57	37.54	0.03	38.22
<b>SERVICE PROVIDING</b>	1,246.76	1,183.21	63.55	1,267.06	32.1	32.1	0.0	32.8	38.84	36.86	1.98	38.63
Trade, Transp., Utilities	994.11	939.63	54.48	1,003.75	31.7	31.3	0.4	32.6	31.36	30.02	1.34	30.79
Financial Activities	2,135.64	2,216.01	-80.37	2,171.67	37.0	37.9	-0.9	38.2	57.72	58.47	-0.75	56.85
Prof. & Business Serv.	1,649.33	1,487.24	162.09	1,676.33	35.5	34.7	0.8	36.3	46.46	42.86	3.60	46.18
Education & Health Ser.	1,165.78	1,138.17	27.61	1,176.55	32.5	33.0	-0.5	32.7	35.87	34.49	1.38	35.98
Leisure & Hospitality	615.26	582.00	33.26	625.30	25.7	25.0	0.7	26.0	23.94	23.28	0.66	24.05
Other Services	850.87	917.47	-66.60	871.07	28.1	30.4	-2.3	28.3	30.28	30.18	0.10	30.78
<b>LABOR MARKET AREAS: TOTAL PRIVATE</b>												
Bridgeport-Stamford-Danbury	1,325.12	1,294.22	30.90	1,355.08	32.8	32.6	0.2	33.7	40.40	39.70	0.70	40.21
Hartford-W.Hartford-E.Hartford	1,316.11	1,273.34	42.77	1,338.04	33.6	33.5	0.1	34.3	39.17	38.01	1.16	39.01
New Haven	1,213.27	1,147.52	65.75	1,221.43	32.8	32.6	0.2	33.2	36.99	35.20	1.79	36.79
Norwich-New London-Willimantic	1,137.95	1,041.54	96.41	1,141.81	32.1	31.9	0.2	32.3	35.45	32.65	2.80	35.35
Waterbury-Shelton	1,154.16	1,024.49	129.67	1,142.61	33.6	32.4	1.2	33.4	34.35	31.62	2.73	34.21

Current month's data are preliminary. Prior months' data have been revised. All data are benchmarked to March 2024.

## BUSINESS AND EMPLOYMENT CHANGES ANNOUNCED IN THE NEWS MEDIA

### New Companies and Expansions

- Square Peg Pizzeria to open new spot in Shelton
- Electric Boat to hire 3,000 workers in 2025
- Barnes & Noble announces opening dates for 3 new CT stores
- J. Crew Factory opens in Southbury Green shopping plaza
- CT's first Wegmans announces official Norwalk opening date in summer
- Ross Dress for Less is opening in Connecticut
- New Mexican restaurant Speedy Tacos opens in Torrington
- Western and workwear Boot Barn is opening its next two stores in Connecticut
- Martha Stewart to open restaurant at Foxwoods
- Sally's Apizza is open at Westfarms mall
- CVS opens new store on Bridgeport's North Avenue
- Two sisters open Cozy Cup Bakery & Café in Berlin
- The Pearl Sports Bar opens in former downtown Manchester burger restaurant space

### Layoffs and Closures

- Amazon lays off dozens of corporate workers in latest round of job cuts
- Southington-based manufacturer Rex Forge says it will close, lay off 103 workers
- Undergrounds Record Cafe in Oakville closes its doors
- Jann fabrics and craft store to close 10 Connecticut locations
- Three of six Forever 21 Connecticut stores to close amid bankruptcy talks
- Duracell to relocate R&D HQ from CT to Atlanta by summer 2026
- Bridgeport Flyer Diner in Milford closing its doors after 85 years
- CT-based Pitney Bowes cuts workforce by over 30% amid cost reduction and sale of unit
- Rheem Manufacturing Co. laying off 76 workers in Waterbury

(By Place of Residence - Not Seasonally Adjusted)

**JANUARY 2025**

LMA/TOWNS	LABOR FORCE	EMPLOYED	UNEMPLOYED	%	LMA/TOWNS	LABOR FORCE	EMPLOYED	UNEMPLOYED	%
<b>BRIDGEPORT-STAMFORD-DANBURY</b>					<b>HARTFORD-WEST HARTFORD-EAST HARTFORD cont...</b>				
	<b>517,405</b>	<b>497,839</b>	<b>19,566</b>	<b>3.8</b>					
BETHEL	12,110	11,639	471	3.9	HEBRON	4,923	4,738	185	3.8
BRIDGEPORT	78,508	74,217	4,291	5.5	KILLINGWORTH	3,087	2,988	99	3.2
BRIDGEWATER	920	872	48	5.2	LYME	1,282	1,245	37	2.9
BROOKFIELD	9,534	9,219	315	3.3	MANCHESTER	32,339	31,030	1,309	4.0
DANBURY	49,562	47,648	1,914	3.9	MANSFIELD	11,672	11,286	386	3.3
DARIEN	10,429	10,179	250	2.4	MARLBOROUGH	3,272	3,149	123	3.8
EASTON	3,983	3,858	125	3.1	MIDDLEFIELD	2,311	2,221	90	3.9
FAIRFIELD	31,919	30,908	1,011	3.2	MIDDLETOWN	27,072	26,047	1,025	3.8
GREENWICH	31,284	30,369	915	2.9	NEW BRITAIN	37,574	35,554	2,020	5.4
MONROE	10,780	10,427	353	3.3	NEWINGTON	17,531	16,961	570	3.3
NEW CANAAN	9,431	9,134	297	3.1	OLD LYME	4,025	3,899	126	3.1
NEW FAIRFIELD	6,971	6,722	249	3.6	OLD SAYBROOK	5,719	5,554	165	2.9
NEW MILFORD	15,810	15,184	626	4.0	PLAINVILLE	10,399	9,981	418	4.0
NEWTOWN	14,858	14,356	502	3.4	PORTLAND	5,151	4,943	208	4.0
NORWALK	54,398	52,261	2,137	3.9	ROCKY HILL	11,276	10,901	375	3.3
REDDING	4,327	4,166	161	3.7	DEEP RIVER	2,614	2,523	91	3.5
RIDGEFIELD	12,448	12,120	328	2.6	SIMSBURY	13,185	12,805	380	2.9
SHERMAN	2,030	1,978	52	2.6	SOMERS	4,996	4,820	176	3.5
STAMFORD	81,932	79,118	2,814	3.4	SOUTHINGTON	24,653	23,794	859	3.5
STRATFORD	29,244	27,941	1,303	4.5	SOUTH WINDSOR	14,316	13,864	452	3.2
TRUMBULL	18,793	18,153	640	3.4	STAFFORD	6,254	5,950	304	4.9
WESTON	5,375	5,234	141	2.6	SUFFIELD	8,029	7,740	289	3.6
WESTPORT	12,922	12,544	378	2.9	TOLLAND	8,406	8,133	273	3.2
WILTON	9,833	9,589	244	2.5	VERNON	16,807	16,102	705	4.2
					WESTBROOK	3,941	3,804	137	3.5
					WEST HARTFORD	34,582	33,583	999	2.9
					WETHERSFIELD	14,828	14,337	491	3.3
					WILLINGTON	2,956	2,831	125	4.2
					WINDSOR	16,544	15,929	615	3.7
					WINDSOR LOCKS	7,214	6,923	291	4.0
<b>HARTFORD-WEST HARTFORD-EAST HARTFORD</b>					<b>NEW HAVEN</b>				
	<b>614,264</b>	<b>589,955</b>	<b>24,309</b>	<b>4.0</b>		<b>316,707</b>	<b>304,401</b>	<b>12,306</b>	<b>3.9</b>
ANDOVER	1,851	1,781	70	3.8	BETHANY	3,381	3,267	114	3.4
AVON	9,601	9,331	270	2.8	BRANFORD	16,423	15,876	547	3.3
BERLIN	11,503	11,110	393	3.4	EAST HAVEN	16,209	15,496	713	4.4
BLOOMFIELD	11,664	11,174	490	4.2	GUILFORD	11,396	11,044	352	3.1
BOLTON	2,738	2,627	111	4.1	HAMDEN	34,496	33,203	1,293	3.7
CANTON	5,069	4,899	170	3.4	MADISON	9,548	9,277	271	2.8
CHESTER	1,933	1,854	79	4.1	MERIDEN	32,407	30,813	1,594	4.9
CLINTON	7,793	7,524	269	3.5	MILFORD	32,384	31,346	1,038	3.2
COLUMBIA	2,777	2,665	112	4.0	NEW HAVEN	71,552	68,502	3,050	4.3
COVENTRY	6,575	6,310	265	4.0	NORTH BRANFORD	7,685	7,346	339	4.4
CROMWELL	7,412	7,137	275	3.7	NORTH HAVEN	14,007	13,555	452	3.2
DURHAM	4,456	4,334	122	2.7	ORANGE	7,735	7,516	219	2.8
EAST GRANBY	2,733	2,637	96	3.5	WALLINGFORD	25,469	24,537	932	3.7
EAST HADDAM	4,667	4,466	201	4.3	WEST HAVEN	29,344	28,074	1,270	4.3
EAST HAMPTON	7,012	6,758	254	3.6	WOODBIDGE	4,670	4,550	120	2.6
EAST HARTFORD	26,440	25,043	1,397	5.3					
EAST WINDSOR	6,488	6,210	278	4.3					
ELLINGTON	9,025	8,690	335	3.7					
ENFIELD	21,667	20,814	853	3.9					
ESSEX	3,884	3,761	123	3.2					
FARMINGTON	14,895	14,446	449	3.0					
GLASTONBURY	19,313	18,791	522	2.7					
GRANBY	6,122	5,901	221	3.6					
HADDAM	4,803	4,643	160	3.3					
HARTFORD	56,885	53,413	3,472	6.1					

**LABOR FORCE CONCEPTS**

The **civilian labor force** comprises all state residents age 16 years and older classified as employed or unemployed in accordance with criteria described below. Excluded are members of the military and persons in institutions (correctional and mental health, for example).

The **employed** are all persons who did any work as paid employees or in their own business during the survey week, or who have worked 15 hours or more as unpaid workers in an enterprise operated by a family member. Persons temporarily absent from a job because of illness, bad weather, strike or for personal reasons are also counted as employed whether they were paid by their employer or were seeking other jobs. The **unemployed** are all persons who did not work, but were available for work during the survey week (except for temporary illness) and made specific efforts to find a job in the prior four weeks. Persons waiting to be recalled to a job from which they had been laid off need not be looking for work to be classified as unemployed.



# LABOR FORCE ESTIMATES BY TOWN

Town

(By Place of Residence - Not Seasonally Adjusted)

## JANUARY 2025

LMA/TOWNS	LABOR FORCE	EMPLOYED	UNEMPLOYED	%	LMA/TOWNS	LABOR FORCE	EMPLOYED	UNEMPLOYED	%
<b>NORWICH-NEW LONDON-WILLIMANTIC</b>					<b>TORRINGTON-NORTHWEST</b>				
	<b>143,972</b>	<b>138,308</b>	<b>5,664</b>	<b>3.9</b>		<b>46,410</b>	<b>44,514</b>	<b>1,896</b>	<b>4.1</b>
BOZRAH	1,392	1,342	50	3.6	BARKHAMSTED	2,084	2,009	75	3.6
COLCHESTER	8,665	8,339	326	3.8	BURLINGTON	5,384	5,200	184	3.4
EAST LYME	9,340	9,050	290	3.1	CANAAN	566	548	18	3.2
FRANKLIN	990	938	52	5.3	COLEBROOK	822	792	30	3.6
GRISWOLD	6,616	6,367	249	3.8	CORNWALL	854	834	20	2.3
GROTON	17,945	17,363	582	3.2	GOSHEN	1,884	1,832	52	2.8
LEBANON	3,975	3,820	155	3.9	HARTLAND	1,160	1,111	49	4.2
LEDYARD	8,017	7,743	274	3.4	HARWINTON	3,246	3,123	123	3.8
LISBON	2,120	2,037	83	3.9	KENT	1,431	1,379	52	3.6
MONTVILLE	9,728	9,383	345	3.5	LITCHFIELD	4,478	4,328	150	3.3
NEW LONDON	13,743	13,120	623	4.5	MORRIS	1,275	1,225	50	3.9
NORTH STONINGTON	2,801	2,700	101	3.6	NEW HARTFORD	3,968	3,831	137	3.5
NORWICH	20,424	19,441	983	4.8	NORFOLK	860	819	41	4.8
PRESTON	2,458	2,353	105	4.3	NORTH CANAAN	1,474	1,390	84	5.7
SALEM	2,289	2,211	78	3.4	ROXBURY	1,383	1,344	39	2.8
SPRAGUE	1,609	1,541	68	4.2	SALISBURY	2,022	1,953	69	3.4
STONINGTON	9,708	9,356	352	3.6	SHARON	1,597	1,550	47	2.9
WATERFORD	10,331	9,970	361	3.5	TORRINGTON	19,612	18,733	879	4.5
WINDHAM	11,822	11,234	588	5.0	WARREN	725	703	22	3.0
					WASHINGTON	2,006	1,935	71	3.5
					WINCHESTER	5,421	5,149	272	5.0
<b>PUTNAM-NORTHEAST</b>					<b>WATERBURY-SHELTON</b>				
	<b>51,000</b>	<b>48,841</b>	<b>2,159</b>	<b>4.2</b>		<b>242,179</b>	<b>231,082</b>	<b>11,097</b>	<b>4.6</b>
ASHFORD	2,014	1,928	86	4.3	ANSONIA	10,657	10,123	534	5.0
BROOKLYN	4,135	3,966	169	4.1	BEACON FALLS	3,635	3,476	159	4.4
CANTERBURY	2,724	2,608	116	4.3	BETHLEHEM	1,854	1,758	96	5.2
CHAPLIN	1,299	1,242	57	4.4	BRISTOL	35,073	33,502	1,571	4.5
EASTFORD	919	887	32	3.5	CHESHIRE	14,229	13,796	433	3.0
HAMPTON	917	876	41	4.5	DERBY	6,688	6,362	326	4.9
KILLINGLY	9,042	8,636	406	4.5	MIDDLEBURY	4,072	3,938	134	3.3
PLAINFIELD	8,222	7,869	353	4.3	NAUGATUCK	18,675	17,831	844	4.5
POMFRET	2,288	2,219	69	3.0	OXFORD	7,294	7,037	257	3.5
PUTNAM	4,804	4,600	204	4.2	PLYMOUTH	6,730	6,393	337	5.0
SCOTLAND	816	778	38	4.7	PROSPECT	4,916	4,739	177	3.6
STERLING	1,737	1,632	105	6.0	SEYMOUR	9,641	9,247	394	4.1
THOMPSON	5,548	5,315	233	4.2	SHELTON	23,016	22,116	900	3.9
UNION	418	398	20	4.8	SOUTHBURY	10,016	9,653	363	3.6
VOLUNTOWN	1,541	1,491	50	3.2	THOMASTON	4,458	4,254	204	4.6
WOODSTOCK	4,578	4,396	182	4.0	WATERBURY	53,469	50,242	3,227	6.0
					WATERTOWN	12,742	12,216	526	4.1
					WOLCOTT	9,620	9,250	370	3.8
					WOODBURY	5,392	5,148	244	4.5

Not Seasonally Adjusted:				
CONNECTICUT	<b>1,947,800</b>	<b>1,870,200</b>	<b>77,600</b>	<b>4.0</b>
UNITED STATES	<b>169,814,000</b>	<b>162,347,000</b>	<b>7,467,000</b>	<b>4.4</b>
Seasonally Adjusted:				
CONNECTICUT	<b>1,957,300</b>	<b>1,893,400</b>	<b>63,900</b>	<b>3.3</b>
UNITED STATES	<b>170,744,000</b>	<b>163,895,000</b>	<b>6,849,000</b>	<b>4.0</b>

For the sake of simplicity, the federal Hartford-West Hartford-East Hartford area is referred to in Connecticut DOL publications as the Hartford LMA. All Labor Market Areas (LMAs) in Connecticut except two are federally designated areas for developing labor statistics. The two nonfederal areas are Torrington-Northwest LMA and Putnam-Northeast LMA.

### LABOR FORCE CONCEPTS (Continued)

The **unemployment rate** represents the number unemployed as a percent of the civilian labor force.

With the exception of those persons temporarily absent from a job or waiting to be recalled to one, persons with no job and who are not actively looking for one are counted as "not in the labor force".

Over the course of a year, the size of the labor force and the levels of employment undergo fluctuations due to such seasonal events as changes in weather, reduced or expanded production, harvests, major holidays and the opening and closing of schools. Because these seasonal events follow a regular pattern each year, their influence on statistical trends can be eliminated by adjusting the monthly statistics. **Seasonal Adjustment** makes it easier to observe cyclical and other nonseasonal developments.

TOWN	JAN 2025	YR TO DATE 2025	2024	TOWN	JAN 2025	YR TO DATE 2025	2024	TOWN	JAN 2025	YR TO DATE 2025	2024
Andover	0	0	0	Griswold	0	0	0	Preston	1	1	1
Ansonia	1	1	0	Groton	0	0	1	Prospect	2	2	0
Ashford	0	0	0	Guilford	5	5	3	Putnam	0	0	0
Avon	0	0	1	Haddam	1	1	0	Redding	0	0	0
Barkhamsted	1	1	1	Hamden	4	4	0	Ridgefield	0	0	2
Beacon Falls	0	0	0	Hampton	0	0	0	Rocky Hill	0	0	0
Berlin	1	1	1	Hartford	9	9	0	Roxbury	0	0	0
Bethany	0	0	0	Hartland	0	0	0	Salem	1	1	0
Bethel	22	22	2	Harwinton	1	1	0	Salisbury	0	0	1
Bethlehem	0	0	0	Hebron	1	1	1	Scottd	1	1	0
Bloomfield	0	0	0	Kent	1	1	0	Seymour	3	3	1
Bolton	0	0	0	Killingly	1	1	1	Sharon	1	1	0
Bozrah	0	0	0	Killingworth	0	0	0	Shelton	2	2	1
Branford	3	3	0	Lebanon	0	0	0	Sherman	0	0	0
Bridgeport	6	6	3	Ledyard	2	2	2	Simsbury	0	0	2
Bridgewater	1	1	0	Lisbon	1	1	1	Somers	0	0	1
Bristol	1	1	5	Litchfield	1	1	0	South Windsor	1	1	1
Brookfield	0	0	1	Lyme	0	0	0	Southbury	1	1	0
Brooklyn	3	3	3	Madison	2	2	2	Southington	1	1	4
Burlington	2	2	2	Manchester	0	0	2	Sprague	0	0	0
Canaan	0	0	0	Mansfield	0	0	0	Stafford	1	1	6
Canterbury	0	0	0	Marlborough	0	0	0	Stamford	0	0	1
Canton	1	1	0	Meriden	1	1	10	Sterling	1	1	1
Chaplin	0	0	0	Middlebury	1	1	3	Stonington	1	1	0
Cheshire	8	8	4	Middlefield	0	0	1	Stratford	0	0	5
Chester	0	0	0	Middletown	1	1	1	Suffield	2	2	2
Clinton	1	1	1	Milford	8	8	12	Thomaston	0	0	0
Colchester	1	1	1	Monroe	1	1	0	Thompson	0	0	3
Colebrook	0	0	0	Montville	1	1	1	Tolland	3	3	1
Columbia	0	0	0	Morris	0	0	0	Torrington	0	0	8
Cornwall	0	0	0	Naugatuck	1	1	1	Trumbull	0	0	9
Coventry	0	0	1	New Britain	0	0	0	Union	0	0	0
Cromwell	1	1	1	New Canaan	3	3	0	Vernon	0	0	2
Danbury	5	5	0	New Fairfield	0	0	0	Voluntown	1	1	1
Darien	1	1	7	New Hartford	1	1	1	Wallingford	2	2	1
Deep River	0	0	1	New Haven	6	6	0	Warren	0	0	1
Derby	12	12	0	New London	0	0	2	Washington	0	0	1
Durham	1	1	0	New Milford	2	2	4	Waterbury	4	4	0
East Granby	0	0	0	Newington	1	1	33	Waterford	1	1	3
East Haddam	3	3	0	Newtown	1	1	2	Watertown	0	0	7
East Hampton	1	1	3	Norfolk	0	0	0	West Hartford	5	5	6
East Hartford	1	1	0	North Branford	1	1	1	West Haven	0	0	2
East Haven	0	0	1	North Canaan	0	0	0	Westbrook	0	0	0
East Lyme	0	0	0	North Haven	0	0	3	Weston	2	2	0
East Windsor	0	0	5	North Stonington	1	1	1	Westport	5	5	6
Eastford	0	0	0	Norwalk	77	77	7	Wethersfield	1	1	1
Easton	0	0	1	Norwich	0	0	0	Willington	0	0	1
Ellington	2	2	0	Old Lyme	1	1	0	Wilton	0	0	1
Enfield	0	0	1	Old Saybrook	5	5	0	Winchester	0	0	0
Essex	0	0	0	Orange	0	0	6	Windham	0	0	0
Fairfield	1	1	6	Oxford	1	1	2	Windsor	0	0	0
Farmington	0	0	0	Plainfield	1	1	0	Windsor Locks	1	1	1
Franklin	1	1	1	Plainville	1	1	1	Wolcott	1	1	1
Glastonbury	1	1	4	Plymouth	1	1	0	Woodbridge	3	3	0
Goshen	0	0	0	Pomfret	0	0	0	Woodbury	0	0	2
Granby	2	2	0	Portland	0	0	0	Woodstock	0	0	0
Greenwich	12	12	4								

## **BUSINESS STARTS AND TERMINATIONS**

Registrations and terminations of business entities as recorded with the U.S. Census Bureau and the Connecticut Department of Labor (DOL) are an indication of new business formation and activity. DOL business starts include new employers which have become liable for unemployment insurance taxes during the quarter, as well as new establishments opened by existing employers. DOL business terminations are those accounts discontinued due to inactivity (no employees) or business closure, and accounts for individual business establishments that are closed by still active employers. The Census's business formations include limited liability companies, limited liability partnerships, and foreign-owned (out-of-state) and domestic-owned (in-state) corporations.

## **CONSUMER PRICE INDEX**

The Consumer Price Index (CPI), computed and published by the U.S. Bureau of Labor Statistics, is a measure of the average change in prices over time in a fixed market basket of goods and services. It is based on prices of food, clothing, shelter, fuels, transportation fares, charges for doctors' and dentists' services, drugs and other goods and services that people buy for their day-to-day living. The Northeast region is comprised of the New England states, New York, New Jersey and Pennsylvania.

## **EMPLOYMENT COST INDEX**

The Employment Cost Index (ECI) covers both wages and salaries and employer costs for employee benefits for all occupations and establishments in both the private nonfarm sector and state and local government. The ECI measures employers' labor costs free from the influences of employment shifts among industries and occupations. The base period for all data is December 2005 when the ECI is 100.

## **GAMING DATA**

Indian Gaming Payments are amounts received by the State as a result of the slot compact with the two Federally recognized tribes in Connecticut, which calls for 25 percent of net slot receipts to be remitted to the State. Indian Gaming Slots are the total net revenues from slot machines only received by the two Federally recognized Indian tribes.

## **HOURS AND EARNINGS ESTIMATES**

Production worker earnings and hours estimates include full- and part-time employees working within manufacturing industries. Hours worked and earnings data are computed based on payroll figures for the week including the 12th of the month. Average hourly earnings are affected by such factors as premium pay for overtime and shift differential as well as changes in basic hourly and incentive rates of pay. Average weekly earnings are the product of weekly hours worked and hourly earnings. These data are developed in cooperation with the U.S. Department of Labor, Bureau of Labor Statistics.

## **INITIAL CLAIMS**

Average weekly initial claims are calculated by dividing the total number of new claims for unemployment insurance received in the month by the number of weeks in the month. A minor change in methodology took effect with data published in the March 1997 issue of the DIGEST. Data have been revised back to January 1980.

## **INSURED UNEMPLOYMENT RATE**

Primarily a measure of unemployment insurance program activity, the insured unemployment rate is the 13-week average of the number of people claiming unemployment benefits divided by the number of workers covered by the unemployment insurance system.

## **LABOR FORCE ESTIMATES**

Labor force estimates are a measure of the work status of people who live in Connecticut. Prepared under the direction of the U.S. Bureau of Labor Statistics, the statewide estimates are the product of a signal-plus noise model, which uses results from the Current Population Survey (CPS), a monthly survey of Connecticut households, counts of claimants for unemployment benefits, and establishment employment estimates. The 2015 LAUS Redesign includes improved time-series models for the census divisions, states, select substate areas, and the balances of those states; an improved real-time benchmarking procedure to the national Current Population Survey (CPS) estimates; an improved smoothed seasonal adjustment procedure; and improved treatment of outliers. Non-modeled area estimation improvements include: updated Dynamic Residency Ratios (DRR); more accurate estimates for all-other employment; more accurate estimation of agricultural employment; and improved estimation of non-covered agricultural unemployment. Handbook estimation is now done at the city/town level instead of at the Labor Market Area (LMA) level in Connecticut, which better reflects local conditions. The Redesign also introduces estimation inputs from the American Community Survey (ACS) to replace inputs that were previously obtained from the decennial census long-form survey. Labor force data, reflecting persons employed by place of residence, are not directly comparable to the place-of-work industry employment series. In the labor force estimates, workers involved in labor disputes are counted as employed. The labor force data also includes agricultural workers, unpaid family workers, domestics and the self-employed. Because of these conceptual differences, total labor force employment is almost always different from nonfarm wage and salary employment.

## **LABOR MARKET AREAS**

All Labor Market Areas (LMAs) in Connecticut except two are federally-designated areas for developing labor statistics. For the sake of simplicity, the federal Hartford-West Hartford-East Hartford area is referred to in Connecticut DOL publications as the Hartford LMA. The two nonfederal areas are Torrington-Northwest LMA and Putnam-Northeast LMA. Industry employment and labor force data estimates contained in Connecticut Department of Labor publications are prepared following the same statistical procedures developed by the U.S. Department of Labor, Bureau of Labor Statistics, whether for federally designated or state-determined areas.

## **NONFARM EMPLOYMENT ESTIMATES**

Nonfarm employment estimates are derived from a survey of businesses to measure *jobs* by industry. The estimates include all full- and part-time wage and salary employees who worked during or received pay for the pay period which includes the 12th of the month. Excluded from these estimates are proprietors, self-employed workers, private household employees and unpaid family workers. In some cases, due to space constraints, all industry estimates are not shown. These data are developed in cooperation with the U.S. Department of Labor, Bureau of Labor Statistics.

## **UI COVERED WAGES**

UI covered wages is the total amount paid to those employees who are covered under the Connecticut's Unemployment Insurance (UI) law for services performed during the quarter. The fluctuations in the 1992-93 period reflect the effect of the changes in the tax law and the massive restructuring in the state's economy.

# ECONOMIC INDICATORS AT A GLANCE

(Percent change from prior year; see pages 5-8 for reference months or quarters)

Leading General Drift Indicator.....	4.1	<b>CT Mfg. Production Index</b> .....	1.5	Occupancy Rate.....	1.1
Coincident General Drift Indicator.....	1.3	Production Worker Hours.....	0.2	Tourism Website Visitors.....	-22.2
Connecticut Real GDP.....	2.8	Industrial Electricity Sales.....	-0.5	Air Passenger Count.....	16.9
United States Real GDP.....	2.7	<b>Personal Income</b> .....	5.2	Gaming Slots.....	8.2
New England Real GDP.....	3.0	<b>UI Covered Wages</b> .....	5.6	<b>Employment Cost Index (U.S.)</b>	
Connecticut PCPI.....	4.9	<b>Business Activity</b>		Total.....	3.6
United States PCPI.....	4.7	New Housing Permits.....	14.6	Wages & Salaries.....	3.7
New England PCPI.....	5.0	Electricity Sales.....	6.0	Benefit Costs.....	3.3
Phil. Fed's CT Coincident Index....	NA	Construction Contracts Index.....	-43.8	<b>Consumer Prices</b>	
Phil. Fed's US Coincident Index...	NA	New Auto Registrations.....	18.2	U.S. City Average.....	3.0
		Exports.....	7.4	Northeast Region.....	3.7
		S&P 500: Monthly Close.....	24.7	NY-Newark-Jersey City.....	4.0
				Boston-Cambridge-Newton...	3.9
<b>Total Nonfarm Employment</b> .....	0.8	<b>Business Starts</b>		<b>Interest Rates</b>	
Labor Force.....	1.6	Business Formation.....	-11.6	Prime.....	-1.00 *
Employed.....	1.6	Dept. of Labor.....	-18.9	Conventional Mortgage.....	0.32 *
Unemployed.....	0.5	<b>Business Terminations</b>			
<b>Unemployment Rate</b> .....	0.0 *	Dept. of Labor.....	-18.9		
Labor Force Participation Rate...	0.5 *	<b>State Revenues</b> .....	7.3		
Employment-Population Ratio...	0.5 *	Corporate Tax.....	25.4		
<b>Average Weekly Initial Claims</b> ..	-4.3	Personal Income Tax.....	17.4		
<b>Avg Insured Unempl. Rate</b> .....	0.05 *	Real Estate Conveyance Tax..	19.1		
<b>U-6 Rate</b> .....	0.0 *	Sales & Use Tax.....	-16.4		
<b>Prod. Worker Avg Wkly Hrs</b> .....	1.3	Gaming Payments.....	4.7		
<b>PW Avg Hourly Earnings</b> .....	1.4				
<b>PW Avg Weekly Earnings</b> .....	2.7				

\*Percentage point change  
\*\*Less than 0.05 percent  
NA = Not Available

## THE CONNECTICUT ECONOMIC DIGEST

March 2025

### THE CONNECTICUT

# ECONOMIC DIGEST

A publication of  
The Connecticut Departments of Labor



Mailing address:

**Connecticut Economic Digest**  
**Connecticut Department of Labor**  
**Office of Research**  
**200 Folly Brook Boulevard**  
**Wethersfield, CT 06109-1114**

The Connecticut Economic Digest  
is available on the internet at:  
<http://www.ctdol.state.ct.us/lmi>

### DO YOU WANT TO BE NOTIFIED BY EMAIL WHEN THE DIGEST IS PUBLISHED EACH MONTH?

Simply email to [listserv@list.ct.gov](mailto:listserv@list.ct.gov) with only the following in the body of the message, leave subject blank:  
**SUBSCRIBE DOL-CTEconomicDigest your\_name**  
(type in your name where it says your\_name)

If you wish to have your name removed from our mailing list, please check here and return this page (or a photocopy) to the address at left.

If your address has changed, please check here, make the necessary changes to your address label and return this page to the address at left.

If you receive more than one copy of this publication, please check here and return this page from the duplicate copy to the address at left.