

# Help Wanted OnLine

A real-time measure of labor demand

July 2016

Office of Research

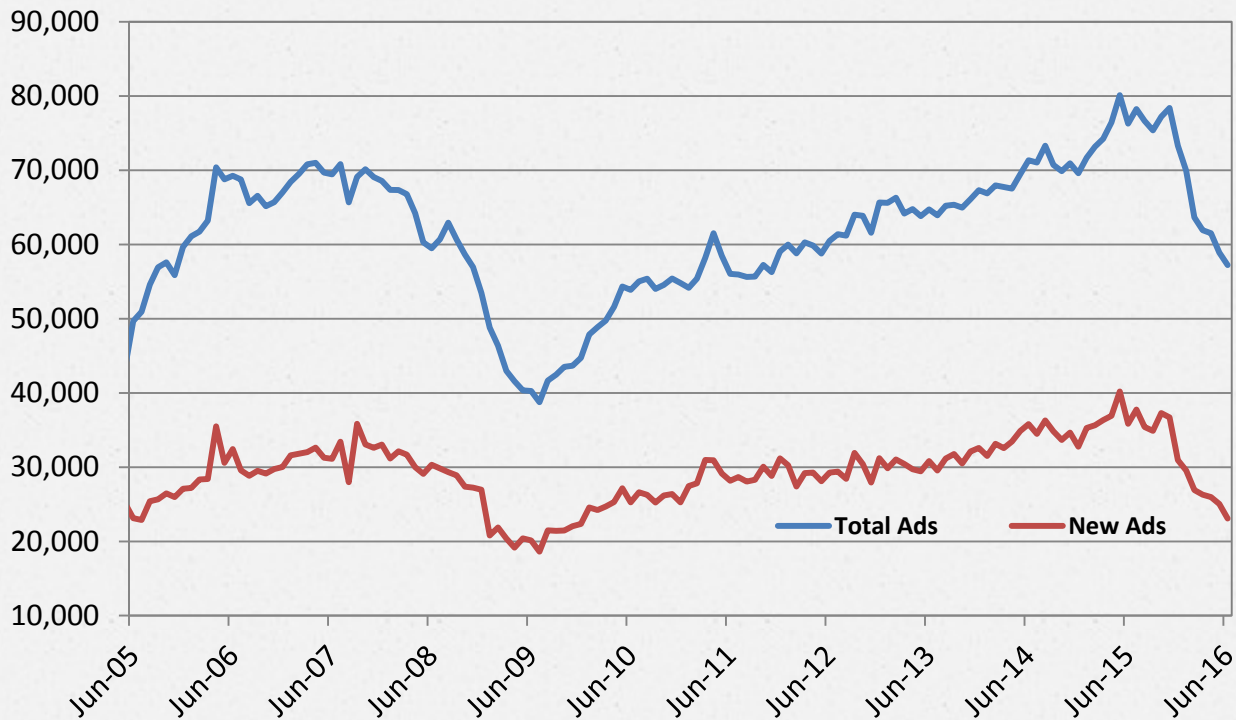


# What is HWOL?

- o ***The Conference Board Help Wanted OnLine®*** Data Series (HWOL) measures the number of new, first-time online jobs and jobs reposted from the previous month for over 16,000 Internet job boards, corporate boards and smaller job sites that serve niche markets and smaller geographic areas.

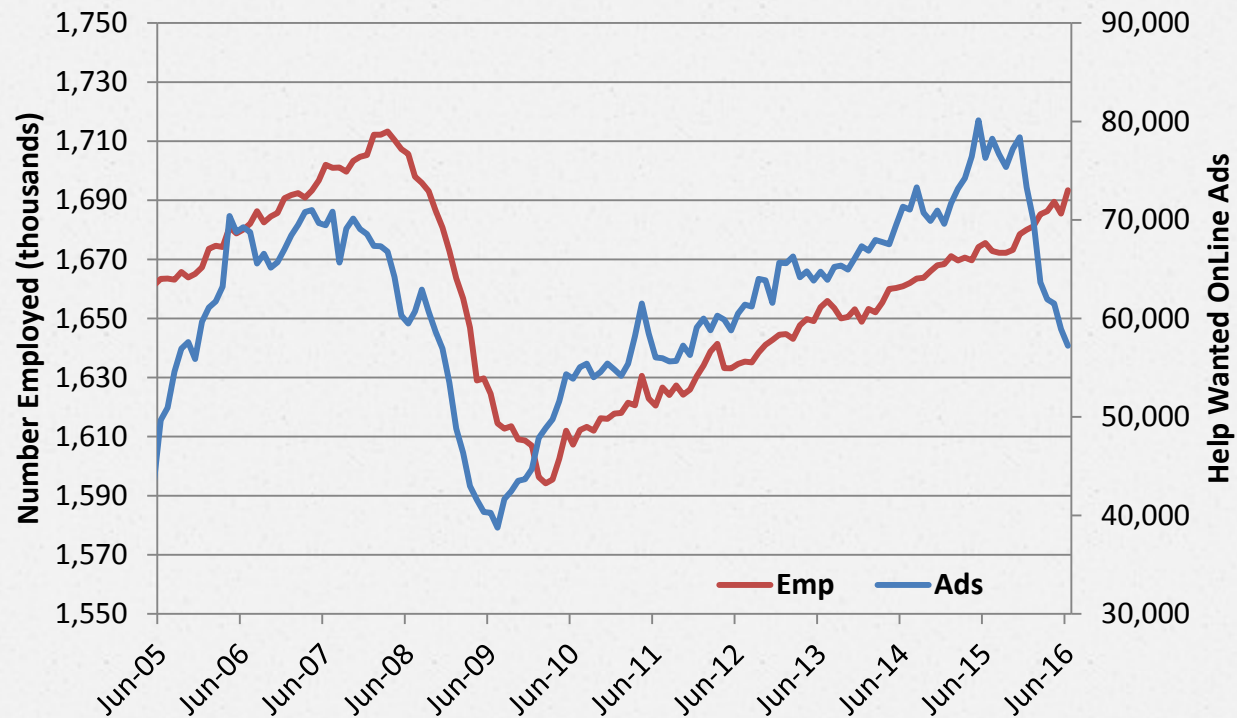
# Connecticut's Help Wanted OnLine Advertisements

Seasonally Adjusted, through June 2016



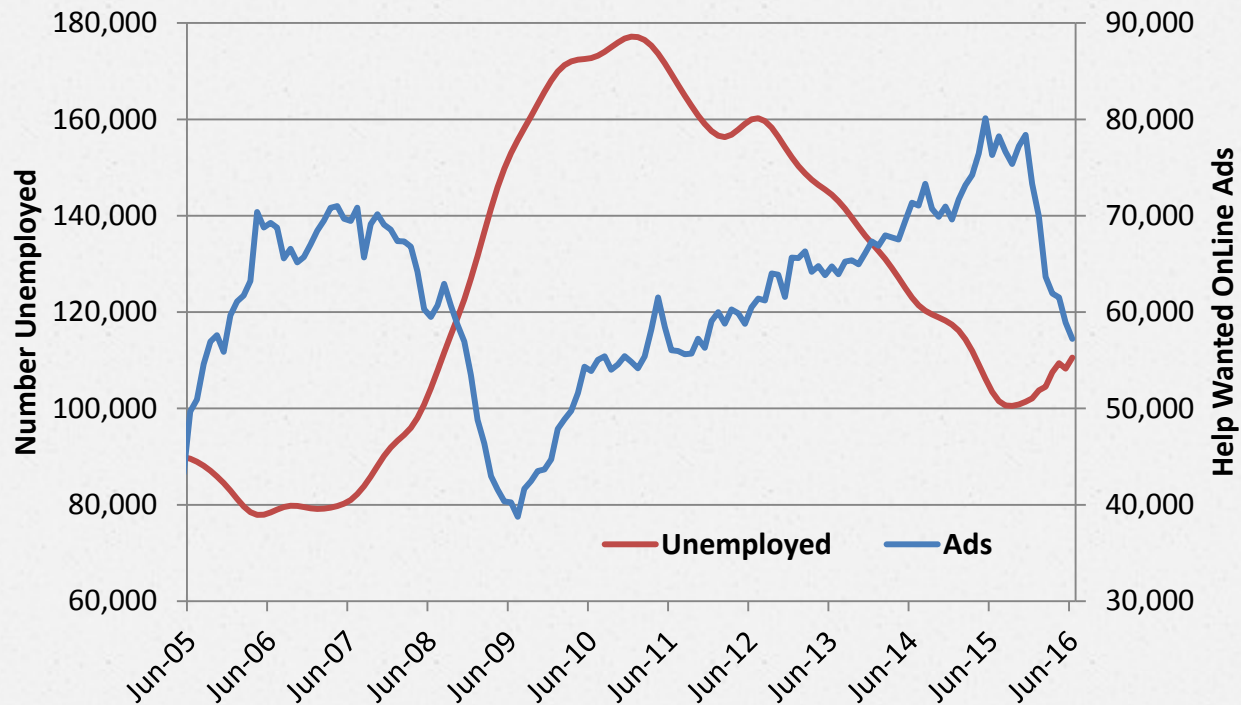
# Employment vs. Labor Demand

CT Seasonally Adjusted Data, through June 2016



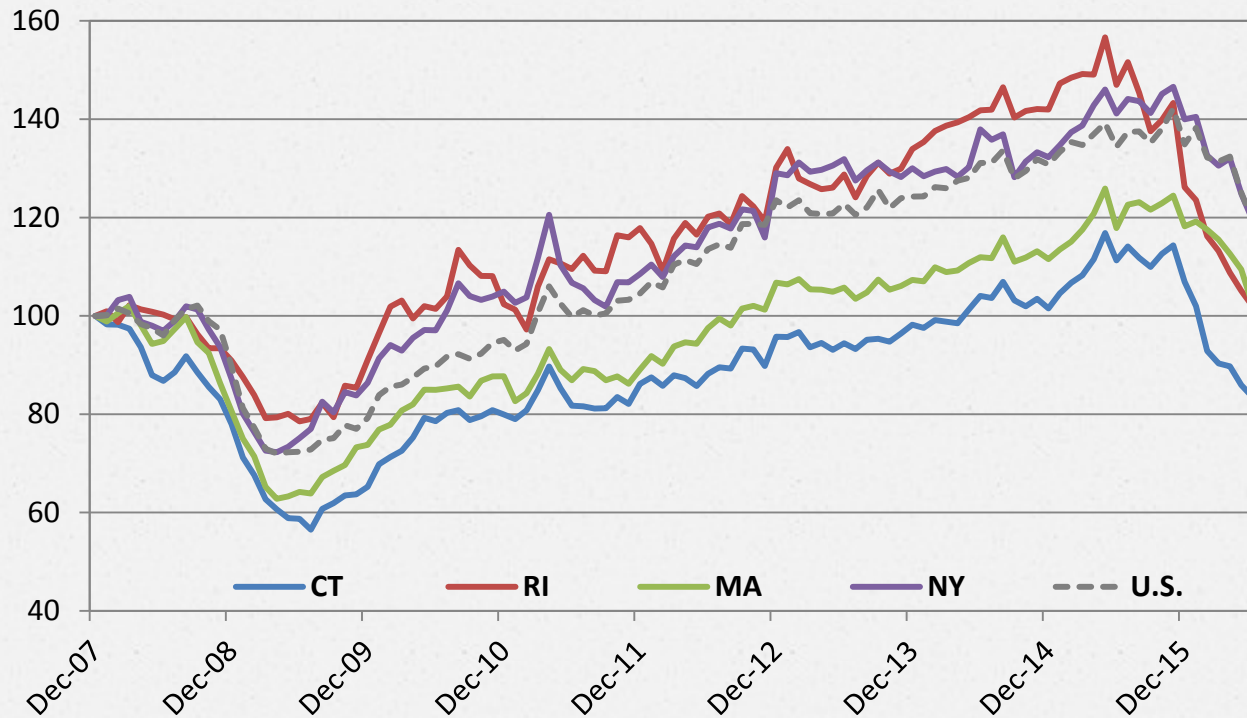
# Labor Supply vs. Labor Demand

CT Seasonally Adjusted Data, through June 2016



# Total Ads Index

Nation and State Comparison (December 2007=100), through June 2016



# Connecticut Employers with the Most Job Ads

- o United Technologies
- o Robert Half International
- o Unitedhealth Group
- o Yale University
- o Compass Group
- o Yale New Haven Hospital
- o Randstad
- o Kforce Professional Staffing, Inc.
- o Travelers Insurance
- o Aetna Inc.
- o Sikorsky
- o Hartford Healthcare
- o Execu | Search
- o CVS Healthcare
- o REGIONS
- o Belcan
- o Genesis Healthcare
- o ACCENTURE
- o Anthem, Inc.
- o The Hartford

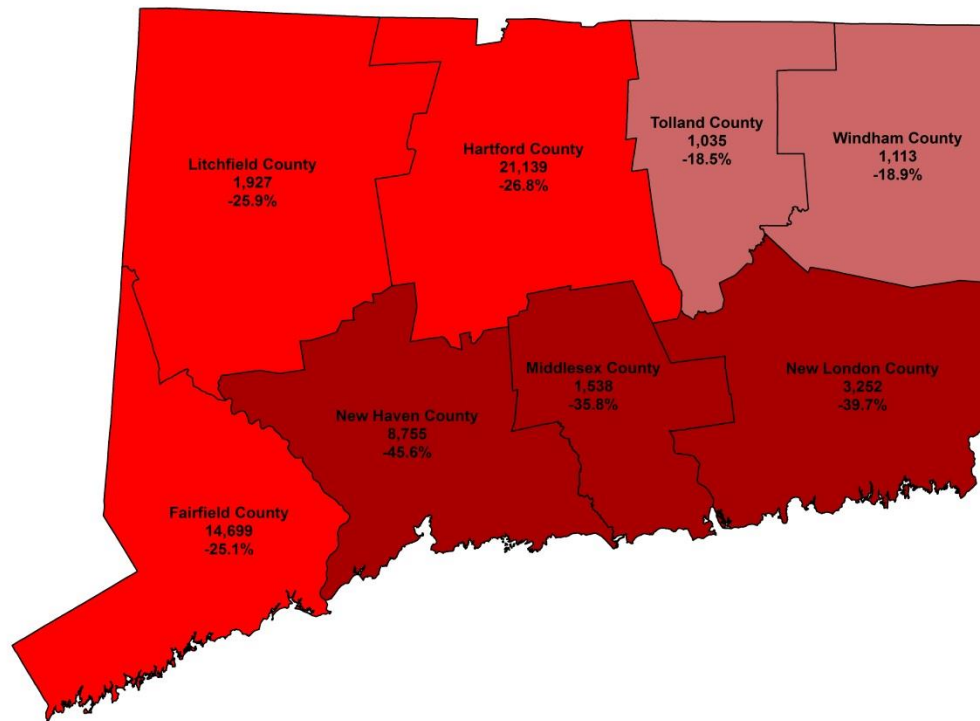
# Connecticut Occupations with the Most Job Ads

- o Registered Nurses
- o Heavy and Tractor-Trailer Truck Drivers
- o Retail Salespersons
- o First-Line Supervisors of Retail Sales Workers
- o Software Developers, Applications
- o Computer System Analysts
- o Accountants
- o Marketing Managers
- o Computer User Support Specialists
- o Customer Service Representatives
- o Industrial Engineers
- o Management Analysts
- o Secondary School Teachers, Except Special and Career/Technical Education
- o Web Developers
- o First-Line Supervisors of Office and Administrative Support Workers
- o First-Line Supervisors of Food Preparation and Serving Workers
- o Medical and Health Services Managers
- o Information Technology Project Managers
- o Network and Computer Systems Administrators
- o Elementary School Teachers, Except Special Education



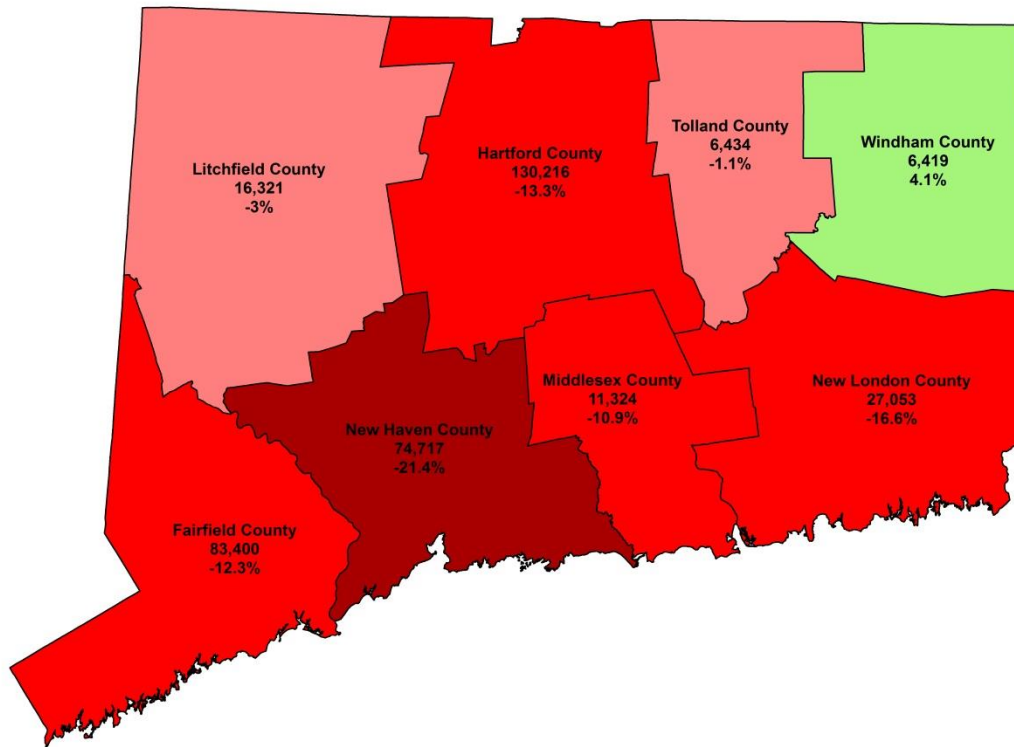
# Available Job Ads, by County

(Volume and June 2015 to June 2016 % change)



# New Job Ads, by County

(Total of past year and % change from previous year)

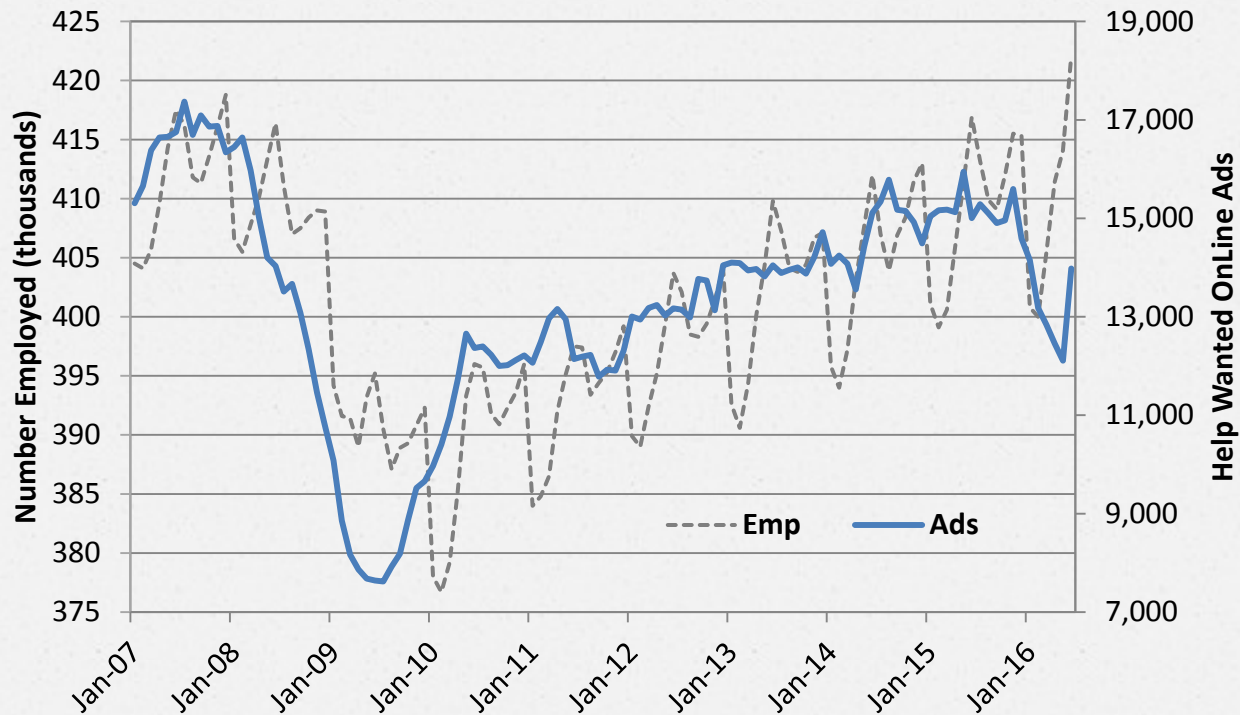


# Labor Market Areas

Employment vs. Labor Demand

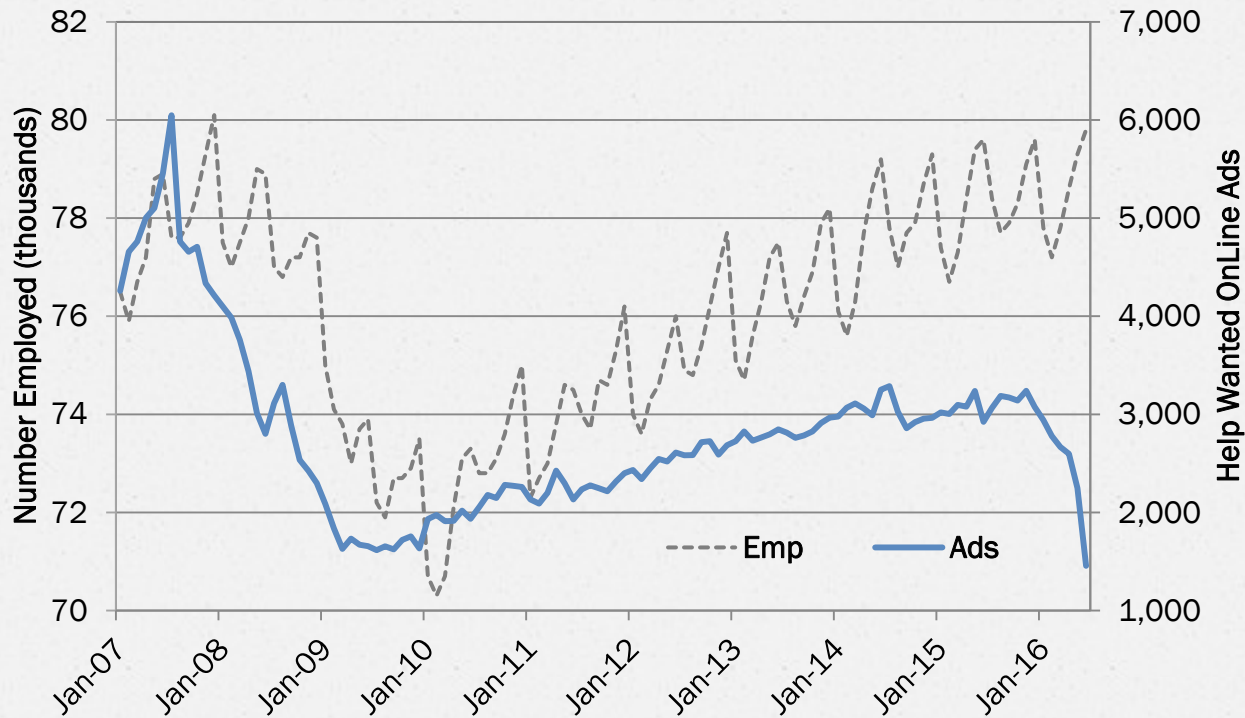
# Bridgeport - Stamford LMA

Employment vs. Labor Demand (Not Seasonally Adjusted), through June 2016



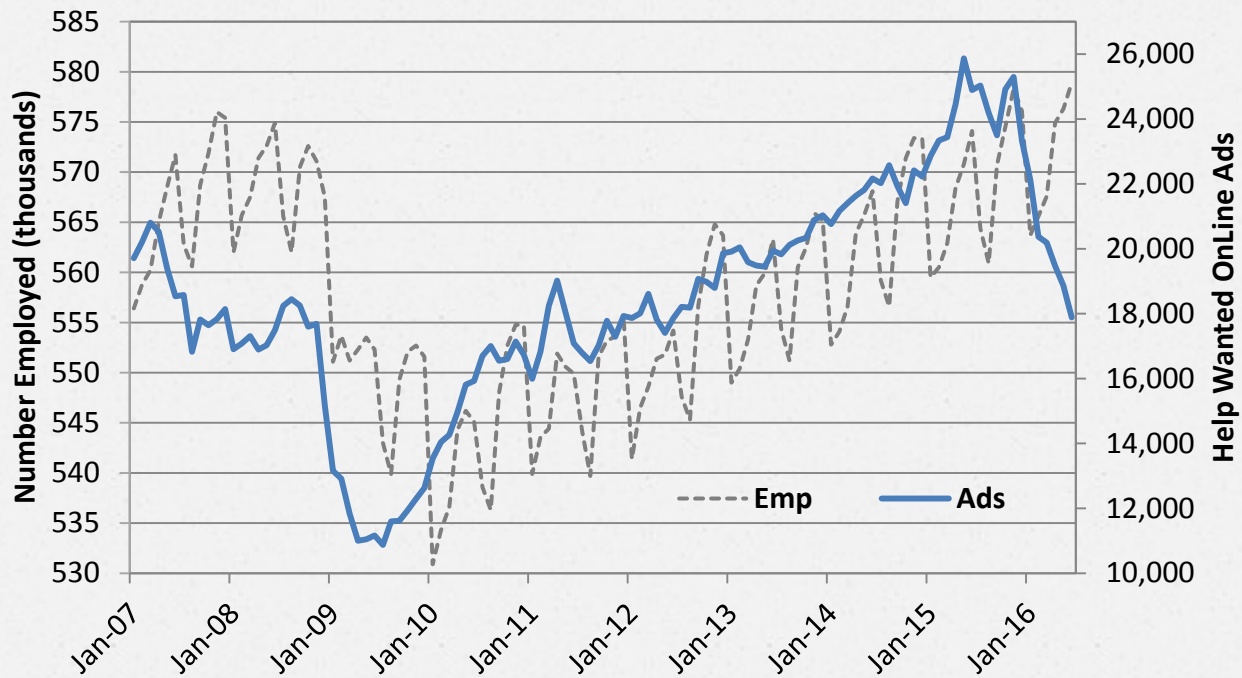
# Danbury LMA

Employment vs. Labor Demand (Not Seasonally Adjusted), through June 2016



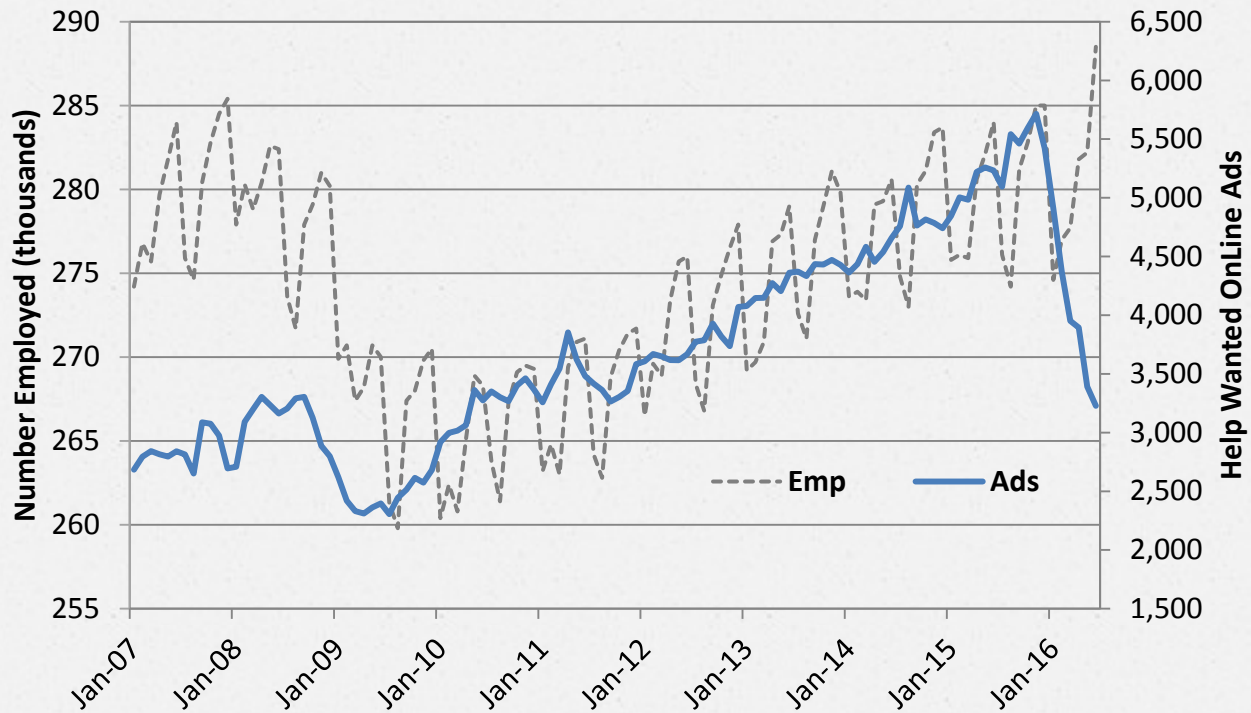
# Hartford LMA

Employment vs. Labor Demand (Not Seasonally Adjusted) , through June 2016



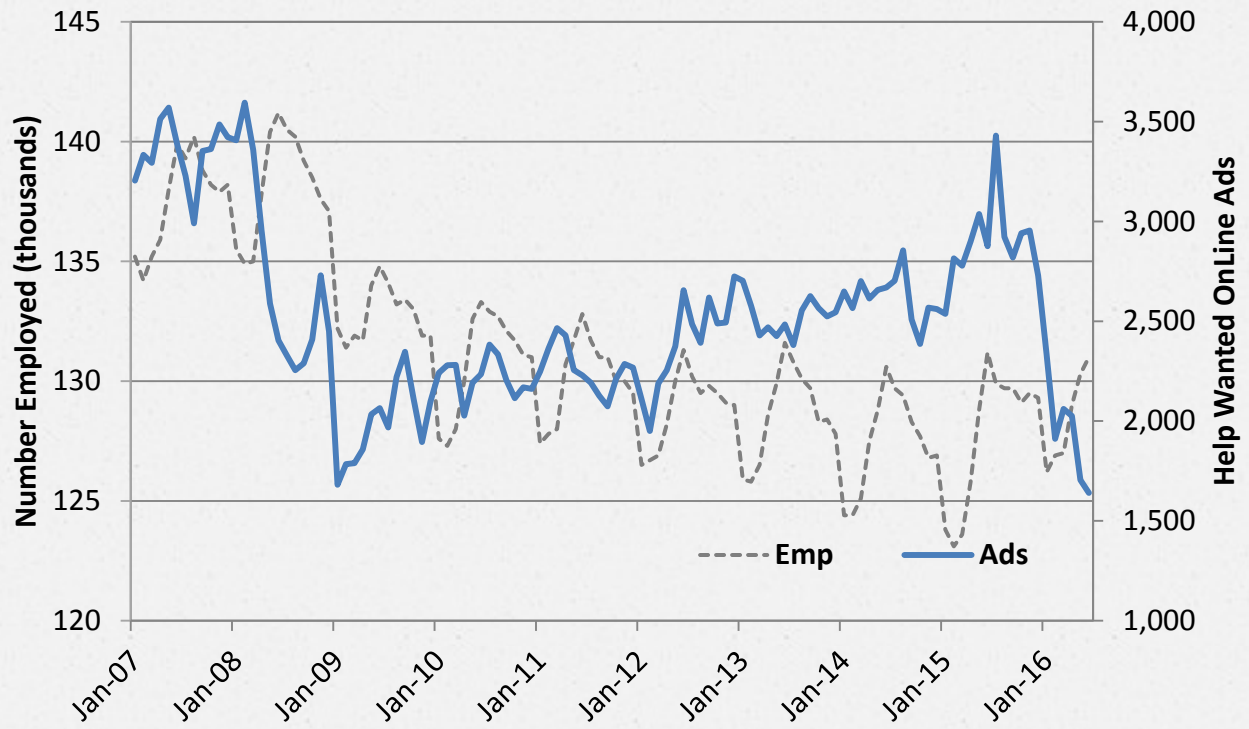
# New Haven LMA

Employment vs. Labor Demand (Not Seasonally Adjusted) , through June 2016



# Norwich – New London LMA

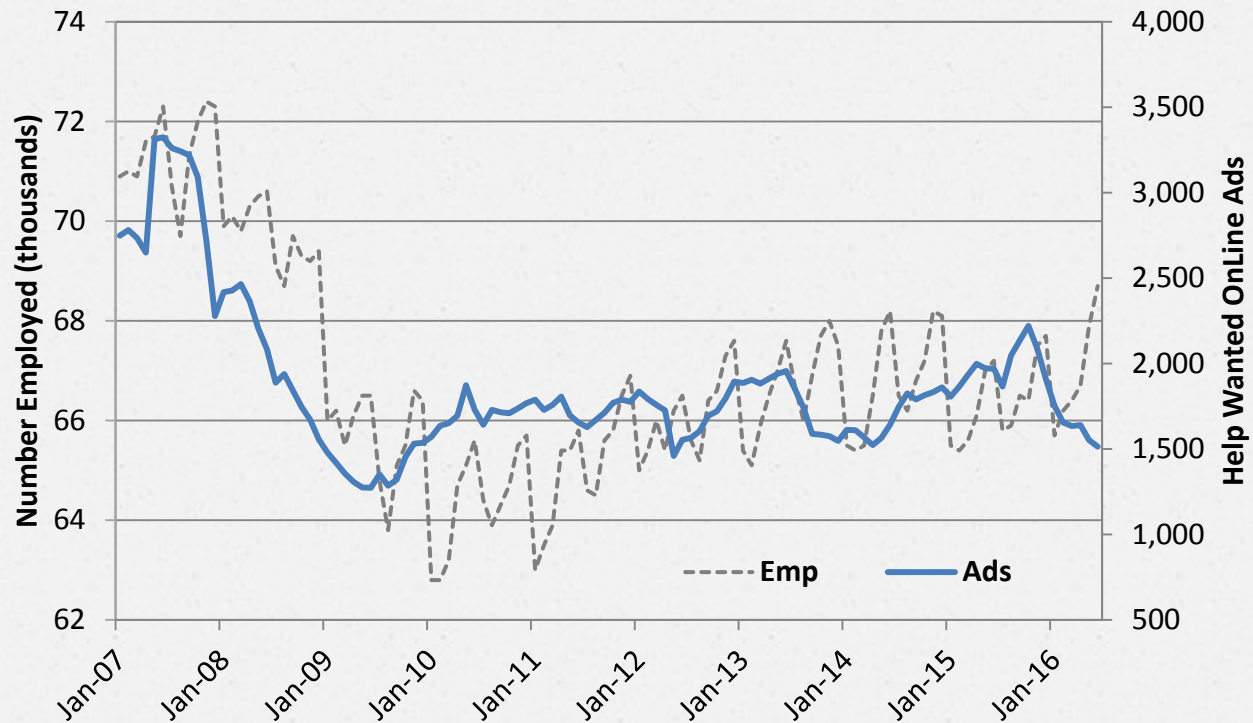
Employment vs. Labor Demand (Not Seasonally Adjusted) , through June 2016





# Waterbury LMA

Employment vs. Labor Demand (Not Seasonally Adjusted) , through June 2016



- o All advertisement data used in this publication is from the Conference Board's Help Wanted OnLine data series.
- o For more information, contact Matthew Krzyzek in the Office of Research at the Department of Labor.

(860) 263-6287

Matthew.Krzyzek@ct.gov

For more Connecticut Labor Market Information visit:

[www.ctdol.state.ct.us/lmi](http://www.ctdol.state.ct.us/lmi)

<https://www.facebook.com/ctlmi>

Twitter: @DOL\_Research