

JANUARY 2026

IN THIS ISSUE...

What the Connecticut Crash Data Repository Reveals 1-5

Economic Indicators

on the Overall Economy	5
Individual Data Items	6-8
Comparative Regional Data	9
Economic Indicator Trends	10-11
Help Wanted OnLine	15
Business and Employment Changes Announced in the News Media	19
Labor Market Areas:	
Nonfarm Employment	12-17
Sea. Adj. Nonfarm Employment	14
Labor Force	18
Hours and Earnings	19
Cities and Towns:	
Labor Force	20-21
Housing Permits	22
Technical Notes	23
At a Glance	24

In November...

Nonfarm Employment

Connecticut 1,714,400
Change over month +0.12%
Change over year +0.11%

United States 159,552,000
Change over month +0.04%
Change over year +0.59%

Unemployment Rate

Connecticut 4.0%
United States 4.6%

Consumer Price Index

United States 324.122
Change over year +2.7%

What the Connecticut Crash Data Repository Reveals

By Al Sylvestre, AICP, Research Analyst, CT Department of Labor

The Connecticut Department of Transportation (CTDOT) Highway Safety Office, the UConn Transportation Safety Research Center, and the UConn Training and Technical Assistance (T2) Center are working to address road safety challenges informed by comprehensive data available through the Connecticut Crash Data Repository (CRD). Road design, driving behaviors, and traffic law enforcement changes on Connecticut streets since the coronavirus pandemic led to spikes in crashes with pedestrian fatalities followed by a decline in the two most recent years for which we have data as shown in the pedestrian fatalities since 2011 (Figure 1).

Notwithstanding the decline since 2022, pedestrian fatalities are nearly twice (180%) the 2011 baseline number. The CDR, a resource of complete, accurate, and uniform crash data, has helped land use planners, traffic and civil engineers, law enforcement, public safety officials, and policy makers understand and address Connecticut's long-standing road-safety challenges since 2011. The CDR facilitates complex queries of crash data recorded by state and local police. Data are compiled by the University of Connecticut Traffic Records Coordinating Committee (TRCC) along with transportation and public safety experts. TRCC engineers and University of

Figure 1

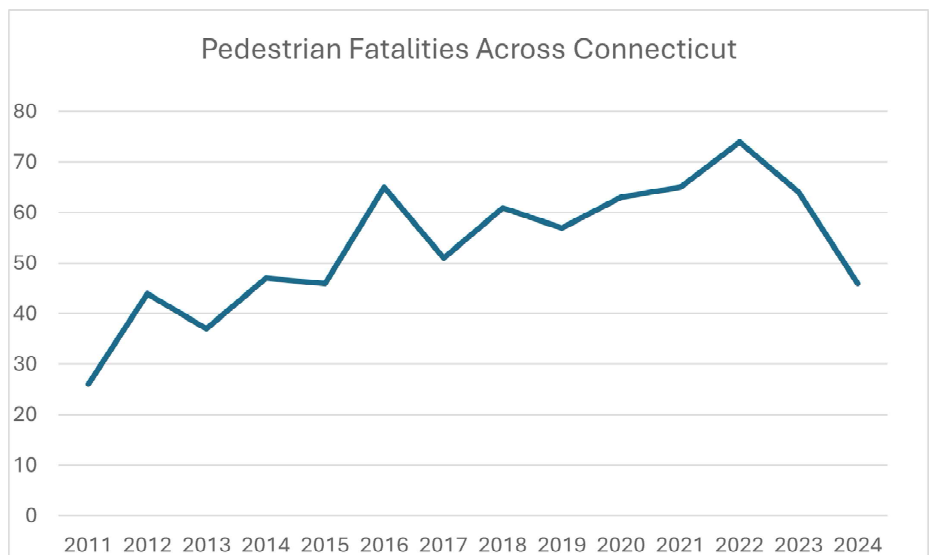


Chart: Pedestrian Fatalities, Courtesy CT Mirror and AAA

ECONOMIC DIGEST

The Connecticut Economic Digest is published monthly by the Connecticut Department of Labor, Office of Research. Its purpose is to regularly provide users with a comprehensive source for the most current, up-to-date data available on the workforce and economy of the state, within perspectives of the region and nation.

The annual subscription is \$50. Send subscription requests to: **The Connecticut Economic Digest**, Connecticut Department of Labor, Office of Research, 200 Folly Brook Boulevard, Wethersfield, CT 06109-1114. Make checks payable to the Connecticut Department of Labor. Back issues are \$4 per copy. The Digest can be accessed free of charge from the DOL Web site. Articles from **The Connecticut Economic Digest** may be reprinted if the source is credited. Please send copies of the reprinted material to the Managing Editor. The views expressed by the authors are theirs alone and may not reflect those of the Connecticut Department of Labor.

This workforce product was funded in part by a grant awarded by the U.S. Department of Labor's Employment and Training Administration. The product was created by the recipient and does not necessarily reflect the official position of the U.S. Department of Labor. The U.S. Department of Labor makes no guarantees, warranties, or assurances of any kind, express or implied, with respect to such information, including any information on linked sites and including, but not limited to, accuracy of the information or its completeness, timeliness, usefulness, adequacy, continued availability, or ownership. This product is copyrighted by the institution that created it. Internal use by an organization and/or personal use by an individual for non-commercial purposes is permissible. All other uses require the prior authorization of the copyright owner.

Managing Editor: Jungmin Charles Joo

Associate Editor: Erin C. Wilkins

We would like to acknowledge the contributions of many DOL Research staff and Rob Damroth to the publication of the Digest.

Connecticut Department of Labor

Danté Bartolomeo, Commissioner
Daryle Dudzinski, Deputy Commissioner
Mark Polzella, Deputy Commissioner

Patrick J. Flaherty, Director
Office of Research
200 Folly Brook Boulevard
Wethersfield, CT 06109-1114
Phone: (860) 263-6255
Fax: (860) 263-6263
E-Mail: dol.econdigest@ct.gov
Website: <http://www.ctdol.state.ct.us/lmi>



Connecticut Transportation Institute information technology staff developed the CDR with funding from the Connecticut Department of Transportation. Before the CDR, Connecticut had separate repositories for motor vehicle crash data: one with CTDOT, the other with the Department of Public Safety (now the Department of Emergency Services and Public Protection or DESPP). In addition to two large-scale repositories, local police departments maintained numerous small-scale repositories throughout the state. Previous data repositories were not easily linked to roadway information, traffic volumes, or other pertinent data including weather, road conditions, and motorist behaviors among other data. As a single data repository, the CDR reduces duplication of effort among researchers.

What follows is a brief examination of the CDR data of which queries can be person-, crash-, or vehicle-centric. :

- **Fatal Crashes** whose data can take up to six months to report following crash investigation.
- **DUI Crashes** in which at least one driver is under the influence of medications or intoxicants.
- **Young Drivers** with at least one driver between the ages of 15 and 25.
- **Crashes involving Motorcycles** with at least one motorcycle involved.
- **Non-Motorist Crashes** involving either a bicyclist or a pedestrian.
- **Pedestrian-involved Crashes** where at least one person involved in the crash is a pedestrian.

- **Bicyclist-involved Crashes** where at least one person involved in the crash is a bicyclist.
- **Work Zone Crashes** related to the presence of a work zone.
- **Crashes involving School Buses** in which at least one vehicle is a school bus.
- **Crashes involving ATVs** where at least one vehicle is an all-terrain vehicle (ATV).
- **Roadway Departure Crashes** in which at least one operator drove off the roadway.
- **Intersections Crashes** that occurred at or near an intersection.
- **Railroad Crossing Crashes** that occurred at a railroad grade crossing.
- **Crashes involving Transit Buses** in which at least one vehicle is a transit bus.
- **Federal Motor Carrier Safety Administration (FMCSA)¹ Qualifying Crashes** where at least one vehicle is a FMCSA qualifying vehicle with either:
 1. a fatality,
 2. an injury requiring transportation to a medical facility, or
 3. disabling damage to one of the vehicles involved.
- **Crashes Involving Motor Coaches** where at least one vehicle is a motor coach.
- **Crashes Involving at Least One Wrong Way Vehicle** traveling on the wrong side or in the wrong direction.

- **Wrong Way Drivers Only** in which the driver and vehicle travel on the wrong side or in the wrong way with no other vehicles or people involved in the crashes.
- **Motorcycle Riders Only** involving motorcycles and riders only.
- **Crashes Involving Children Required to Use Car Seats** with at least one passenger involved who is a child required to be in a car seat until they are aged 7 and heavier than 60 pounds per state law.
- **Children Required to Use Car Seats Only** in which only children who are passengers that should be in a car seat

in the vehicles in which they were riding.

Crash Repository Analytics, Statistics, History (CRASH) queries regarding vehicle actions such as travel direction offer insights that traffic management professionals and public officials can apply to make travel safer for pedestrians. Left-turn crashes involving pedestrians account for nearly one-fifth (18%) of about 5,700 crashes as shown in Figure 2. These can be mitigated by curb extensions that reduce pedestrian crossing distances. The deployment of roundabouts whose efficacy is in slowing traffic so crashes result in less severe injuries to pedestrians, can even eliminate such crashes. Crash mitigation measures for straightaways and curves include road design

elements such as narrowing travel lanes, introducing curves with strategic parking on alternating sides of a straightaway, known in the trade as a chicane (Figure 3), and planting street trees to introduce a sense of enclosure that induces drivers to reduce their speeds. Regarding traffic lights and direction of travel, installing frames behind traffic lights facing east- and west-bound lanes reduces the effects of glare from the rising or setting sun thus making it easier for drivers and pedestrians to more clearly see signal lights.

Three-year CRASH data starting in 2022 summarized by crash, vehicle, and personal variables are available for display as charts filtered by time and date, fatalities and injuries, crash manner and location, road and weather conditions, events (such as collisions with other vehicles, pedestrians, animals, and moving or stationary objects), vehicle actions, demographics, crash severity, and several other factors that offer granular insight. Pedestrian crash conditions provide information about factors that may have influenced pedestrian crashes. The overwhelming majority of those crashes occurred when roads were dry and the weather was clear. Wet, snowy, and slushy road conditions, and roads under moving or still water were present in fewer than 16% of pedestrian crashes. Rain, clouds, snow, freezing rain, fog, drizzle, hail, and sleet combined were present in just over 16.5% of such crashes. One statistic that was close to expected was that 1,876 or 41.7% of pedestrian-involved crashes occurred in other than full daylight.

Drivers older than 70 accounted for 10% of those involved in pedestrian crashes, while 21% of

Figure 2

Vehicle Action	Count of Vehicles	% of Total Vehicles
Grand Total	5,657	100.0%
Straight Ahead	2727	48.2%
Turning Left	1,039	18.4%
Turning Right	455	8.0%
Backing	406	7.2%
Parked	349	6.2%
Entering Traffic Lane	78	1.4%
Passing/Overtaking a Vehicle	76	1.3%
Negotiating a Curve	73	1.3%
Slowing	66	1.2%
Stopped in Traffic	26	0.5%
Changing Lanes	25	0.4%
Leaving a Traffic Lane	23	0.4%
Wrong way or side	15	0.3%
Making a U-Turn	13	0.2%
Overtaking / Passing a Cyclist	3	0.1%
Traveling in Bike Lane	2	0.0%
Other	139	2.5%
Unknown	142	2.5%

such crashes were drivers under age 30. A third of pedestrian crashes involved female drivers while two-thirds involved male drivers. The statistics suggest that more education of young drivers could lead to fewer crashes involving pedestrians.

Data from the CDR's crash emphasis area show that about 4% of nearly 91,000 crashes resulted in serious injury or fatality with fatalities spiking in pandemic years 2020-2023. Fatalities reached their peak in 2021, a 67% increase over 2019, before declining in 2024. The ten-year timeline shows that most fatalities occurred on state and local roads while combined speed-related deaths on US and Interstate routes were fewer than those reported on local roads. Time-of-day crashes peaked at commuting times with highs recorded at 7:00 AM, 3:00 PM, and 4:00 PM while the fewest crashes occurred in the 4:00 AM to 6:00 AM pre-dawn hours.

Vehicle types, ages, and actions by crash severity (fatality, injury, property damage), and manner of collision show that of 92,096 vehicles in speeding crashes between early 2015 and the present, 65% were passenger cars, 20% were SUVs, while 2% were motorcycles. Unexpectedly, nearly half (47.7%) of speeding crashes occurred as the vehicle was on a straightaway while curves and turns were featured in only 30.5% of such crashes. Fatalities in speeding crashes were most numerous in 12-year-old vehicles (69), followed by 13-year-old vehicles (56), then eight-year-old vehicles (55). Property-damage-only crashes occurred most frequently among 12-year-old vehicles (3,500), followed by 11-year-old vehicles (3,400), then 10-year-old vehicles (3,300). About one-fifth (21.3%) of speeding crashes were front-to-

rear collisions. Angle crashes were a distant second at just under 11% and sideswipe collisions among vehicles going in the same direction were 5.6% of such crashes.

Of the 92,079 drivers involved in speeding crashes, nearly half (44.9%) suffered some type of injury while the fatality rate for this group is 1.1%. Of drivers committing the 10 most frequent actions contributing to speeding crashes, 31% failed to keep their lane while 13.1% ran off the road 12.9% were driving recklessly or in a distracted manner, and 12.2% followed too closely.

The wealth of information available on the Connecticut Crash Data Repository has enormous potential for helping planners, engineers, traffic authorities, and law enforcement understand the myriad causes of crashes. Knowledge gleaned from the data presents the opportunity



Figure 3: Chicane With Alternate Side Parking

to reduce the number of crashes through education, improved road design, and public policy changes. The UConn Transportation Safety Research Center, the CTDOT Highway Safety Office, and the UConn T2 Center are working separately and in concert to address road safety challenges through research, training, and testing. Road safety audits, training programs, classes, and seminars

for planners and local traffic authorities, and the application of street design and maintenance innovations are but a few of tools being developed and applied to make Connecticut's streets and roads safer for all their users that include people who walk, drive, use wheelchairs, ride bicycles and scooters, and use public transportation to connect with their communities. ■

1 Trucks and buses registered with the Federal Motor Carrier Safety Administration

GENERAL ECONOMIC INDICATORS

<i>(Seasonally adjusted)</i>	3Q 2025	3Q 2024	YoY CHG NO. %		2Q 2025	QoQ CHG NO. %	
General Drift Indicator (2007=100)*							
Leading	117.3	115.9	1.5	1.3	116.7	0.7	0.56
Coincident	100.8	98.8	2.0	2.0	100.2	0.6	0.61
Real Gross Domestic Product**	2Q 2025	2Q 2024	YoY CHG NO. %		1Q 2025	QoQ CHG NO. %	
(Millions of chained 2017 dollars)							
Connecticut	291,703	285,700	6,003	2.1	288,434	3,269	1.1
United States	23,770,976	23,286,508	484,468	2.1	23,548,210	222,766	0.9
New England	1,209,246	1,187,016	22,230	1.9	1,197,772	11,474	1.0
Per Capita Personal Income**	2Q 2025	2Q 2024	YoY CHG NO. %		1Q 2025	QoQ CHG NO. %	
(Current \$, SAAR)							
Connecticut	99,150	94,749	4,401	4.6	97,755	1,395	1.4
United States	76,251	72,982	3,269	4.5	75,329	922	1.2
New England	91,923	87,971	3,952	4.5	90,624	1,299	1.4
Philadelphia Fed's Coincident Index (2007=100)***	Nov 2025	Nov 2024	YoY CHG NO. %		Oct 2025	MoM CHG NO. %	
Connecticut	135.87	134.60	1.26	0.9	135.90	-0.03	0.0
United States	148.70	145.57	3.13	2.1	148.52	0.18	0.1

Sources: *Dr. Steven P. Lanza, University of Connecticut, <https://steven-lanza.uconn.edu/the-connecticut-green-sheet/>
 U.S. Bureau of Economic Analysis *Federal Reserve Bank of Philadelphia

General Drift Indicators are composite measures of the four-quarter change in three coincident (Connecticut Manufacturing Production Index, nonfarm employment, and real personal income) and three leading (housing permits, manufacturing average weekly hours, and initial unemployment claims) economic variables, and are indexed so 2007 = 100.

The **Philadelphia Fed's Coincident Index** summarizes current economic condition by using four coincident variables: nonfarm payroll employment, average hours worked in manufacturing, the unemployment rate, and wage and salary disbursements deflated by the consumer price index (U.S. city average).

Total nonfarm
employment increased
over the year.

EMPLOYMENT BY INDUSTRY SECTOR

	Nov 2025	Nov 2024	CHANGE		Oct 2025
(Seasonally adjusted; 000s)			NO.	%	
TOTAL NONFARM	1,714.4	1,712.6	1.8	0.1	1,712.3
Natural Res & Mining	0.5	0.5	0.0	0.0	0.5
Construction	64.0	63.1	0.9	1.4	63.4
Manufacturing	153.5	155.5	-2.0	-1.3	153.4
Trade, Transportation & Utilities	294.7	298.9	-4.2	-1.4	294.9
Information	30.2	30.2	0.0	0.0	30.7
Financial Activities	118.9	118.5	0.4	0.3	118.9
Professional and Business Services	223.4	221.6	1.8	0.8	223.6
Education and Health Services	371.9	370.8	1.1	0.3	370.5
Leisure and Hospitality	155.2	154.9	0.3	0.2	154.4
Other Services	65.4	64.2	1.2	1.9	65.5
Government*	236.7	234.4	2.3	1.0	236.5

Source: Connecticut Department of Labor * Includes Native American tribal government employment

Average weekly initial
claims rose from a year
ago.

UNEMPLOYMENT

	Nov 2025	Nov 2024	CHANGE		Oct 2025
(Seasonally adjusted)			NO.	%	
Labor Force, resident (000s)	1,937.7	1,955.9	-18.2	-0.9	NA
Employed (000s)	1,860.5	1,893.4	-32.9	-1.7	NA
Unemployed (000s)	77.2	62.5	14.7	23.5	NA
Unemployment Rate (%)	4.0	3.2	0.8	---	NA
Labor Force Participation Rate (%)	64.0	65.0	-1.0	---	NA
Employment-Population Ratio (%)	61.5	62.9	-1.4	---	NA
Average Weekly Initial Claims (NSA)	2,885	2,621	264	10.1	2,052
Avg. Insured Unemp. Rate (% NSA)	1.71	1.32	0.39	---	1.72
	3Q 2025	3Q 2024			2Q 2025
U-6 Rate (%)	7.8	7.2	0.6	---	7.6

Sources: Connecticut Department of Labor; U.S. Bureau of Labor Statistics

The production worker
weekly earnings fell over
the year.

MANUFACTURING ACTIVITY

	Nov 2025	Nov 2024	CHANGE		Oct 2025	Sep 2025
(Not seasonally adjusted)			NO.	%		
Production Worker Avg Wkly Hours	40.8	39.4	1.4	3.6	40.2	--
Prod. Worker Avg Hourly Earnings	28.99	31.31	-2.32	-7.4	28.92	--
Prod. Worker Avg Weekly Earnings	1,182.79	1,233.61	-50.82	-4.1	1,162.58	--
CT Mfg. Prod. Index (2012=100)	100.1	97.6	2.46	2.5	106.1	102.0
Production Worker Hours (000s)	3,790	3,812	-22	-0.6	3,751	--
Industrial Electricity Sales (mil kWh)*	210	207	3	1.4	230	216
CT Mfg. Prod. Index, 12-MMA (2012=100)	99.9	98.0	1.93	2.0	99.7	99.6

Sources: Connecticut Department of Labor; U.S. Department of Energy

*Latest two months are forecasted.

Personal income
increased 5.1 percent
from a year earlier.

INCOME

	2Q 2025	2Q 2024	CHANGE		1Q 2025
(\$ Millions, SA, annualized)			NO.	%	
Personal Income	\$365,727.6	\$347,817.2	\$17,910.4	5.1	\$360,209.1
Wages and Salaries	\$159,379.3	\$151,073.8	\$8,305.5	5.5	\$157,204.5

Source: Bureau of Economic Analysis

BUSINESS ACTIVITY

New auto registrations increased over the year.

	MONTH	LEVEL	Y/Y % CHG	YEAR TO DATE CURRENT	PRIOR	% CHG
New Housing Permits*	Oct 2025	805	42.7	5,944	5,034	18.1
Electricity Sales (mil kWh)	Oct 2025	1,976	-1.1	22,878	22,902	-0.1
Construction Contracts Index (1980=100)	Nov 2025	1237.5	162.9	---	---	---
New Auto Registrations	Nov 2025	16,259	12.3	180,335	182,952	-1.4
Exports (Bil. \$)	3Q 2025	4.33	3.2	12.94	12.94	0.0
S&P 500: Monthly Close	Nov 2025	6,849.09	13.5	---	---	---

Sources: Connecticut Department of Economic and Community Development; U.S. Department of Energy, Energy Information Administration; Connecticut Department of Revenue Services; F.W. Dodge; Connecticut Department of Motor Vehicles; Wisertrade.org

* Estimated by the Bureau of the Census

BUSINESS STARTS AND TERMINATIONS

Business formation, seasonally adjusted, was up over the year.

	MO/QTR	LEVEL	Y/Y % CHG	YEAR TO DATE CURRENT	PRIOR	% CHG
STARTS						
Business Formation, SA	Nov 2025	4,436	15.5	44,805	42,457	5.5
Business Formation, NSA	Nov 2025	3,727	15.9	45,772	43,679	4.8
Department of Labor, NSA	2Q 2025	3,474	-10.7	7,848	8,253	-4.9
TERMINATIONS						
Department of Labor, NSA	2Q 2025	2,418	2.0	4,934	4,891	0.9

Sources: U.S. Census Bureau; Connecticut Department of Labor

STATE REVENUES

Total all revenues was down from a year ago.

	Nov 2025	Nov 2024	% CHG	YEAR TO DATE CURRENT	PRIOR	% CHG
(Millions of dollars)						
TOTAL ALL REVENUES*	1,366.8	1,382.7	-1.1	26,720.2	23,124.7	15.5
Corporate Tax	30.4	35.2	-13.6	1,621.7	1,693.0	-4.2
Personal Income Tax	728.2	712.3	2.2	13,226.6	11,074.8	19.4
Real Estate Conv. Tax	27.4	23.4	17.1	343.3	250.1	37.3
Sales & Use Tax	416.0	415.4	0.1	6,514.7	5,862.7	11.1
Gaming Payments**	18.5	18.1	2.4	200.5	194.8	3.0

Sources: Connecticut Department of Revenue Services; Division of Special Revenue

*Includes all sources of revenue; Only selected sources are displayed; Most July receipts are credited to the prior fiscal year and are not shown. **See page 23 for explanation.

TOURISM AND TRAVEL

Gaming slots was up over the year.

	MONTH	LEVEL	Y/Y % CHG	YEAR TO DATE CURRENT	PRIOR	% CHG
Occupancy Rate (%)*	Nov 2025	60.7	0.2	62.9	62.2	1.1
Tourism Website Visitors	Nov 2025	656,229	39.4	7,823,074	6,407,363	22.1
Air Passenger Count	Nov 2025	506,827	-7.1	6,133,712	6,076,161	0.9
Gaming Slots (Mil.\$)***	Nov 2025	880.5	4.5	9,463.6	9,294.7	1.8

Sources: Connecticut Department of Transportation, Bureau of Aviation and Ports; Connecticut Commission on Culture and Tourism; Division of Special Revenue

*STR, Inc. Due to layoffs, Info Center Visitors data are no longer published.

***See page 23 for explanation

Compensation cost for the nation rose 3.5 percent over the year.

EMPLOYMENT COST INDEX

Private Industry Workers (Dec. 2005 = 100)	Seasonally Adjusted			Not Seasonally Adjusted		
	Sep	Jun	3-Mo	Sep	Sep	12-Mo
	2025	2025	% Chg	2025	2024	% Chg
UNITED STATES TOTAL	172.2	170.8	0.8	172.3	166.4	3.5
Wages and Salaries	175.0	173.6	0.8	175.1	169.1	3.6
Benefit Costs	165.7	164.4	0.8	165.6	160.1	3.5
NORTHEAST TOTAL	---	---	---	173.4	167.4	3.6
Wages and Salaries	---	---	---	174.9	168.8	3.6

Source: U.S. Department of Labor, Bureau of Labor Statistics

U.S. inflation rate was up by 2.7 percent over the year.

CONSUMER NEWS

			% CHANGE	
(Not seasonally adjusted)	MO/QTR	LEVEL	Y/Y	P/P*
CONSUMER PRICES				
CPI-U (1982-84=100)				
U.S. City Average	Nov 2025	324.122	2.7	NA
Purchasing Power of \$ (1982-84=\$1.00)	Nov 2025	0.309	-2.7	NA
Northeast Region	Nov 2025	337.284	3.1	NA
New York-Newark-Jersey City	Nov 2025	348.620	3.0	NA
Boston-Cambridge-Newton**	Nov 2025	347.892	2.8	-0.4
CPI-W (1982-84=100)				
U.S. City Average	Nov 2025	317.414	2.7	NA

Source: U.S. Department of Labor, Bureau of Labor Statistics

*Change over prior monthly or quarterly period

**The Boston CPI can be used as a proxy for New England and is measured every other month.

Conventional mortgage rate fell to 6.24 percent over the month.

INTEREST RATES

(Percent)	Nov 2025	Oct 2025	Nov 2024
Prime	7.00	7.23	7.81
Federal Funds	3.88	4.09	4.64
3 Month Treasury Bill	3.94	3.98	4.62
6 Month Treasury Bill	3.78	3.79	4.43
1 Year Treasury Note	3.66	3.61	4.33
3 Year Treasury Note	3.56	3.53	4.21
5 Year Treasury Note	3.67	3.65	4.23
7 Year Treasury Note	3.86	3.83	4.29
10 Year Treasury Note	4.09	4.06	4.36
20 Year Treasury Note	4.67	4.61	4.63
Conventional Mortgage	6.24	6.25	6.81

Sources: Federal Reserve; Federal Home Loan Mortgage Corp.

NONFARM EMPLOYMENT

Six states in the region gained jobs over the year.

(Seasonally adjusted; 000s)	Nov 2025	Nov 2024	CHANGE		Oct 2025
			NO.	%	
Connecticut	1,714.4	1,712.6	1.8	0.1	1,712.3
Maine	654.0	658.4	-4.4	-0.7	652.7
Massachusetts	3,717.0	3,715.2	1.8	0.0	3,714.6
New Hampshire	706.1	708.9	-2.8	-0.4	708.9
New Jersey	4,396.0	4,375.4	20.6	0.5	4,397.7
New York	9,996.7	9,908.8	87.9	0.9	9,979.6
Pennsylvania	6,258.3	6,160.7	97.6	1.6	6,254.8
Rhode Island	513.9	514.4	-0.5	-0.1	513.7
Vermont	313.7	311.7	2.0	0.6	313.9
United States	159,552.0	158,619.0	933.0	0.6	159,488.0

Source: U.S. Department of Labor, Bureau of Labor Statistics

LABOR FORCE

Four states in the region posted increases in the labor force from last year.

(Seasonally adjusted)	Nov 2025	Nov 2024	CHANGE		Oct 2025
			NO.	%	
Connecticut	1,937,715	1,955,913	-18,198	-0.9	NA
Maine	705,033	709,581	-4,548	-0.6	NA
Massachusetts	3,954,116	3,916,793	37,323	1.0	NA
New Hampshire	774,931	775,387	-456	-0.1	NA
New Jersey	4,909,717	4,903,351	6,366	0.1	NA
New York	9,938,543	9,851,221	87,322	0.9	NA
Pennsylvania	6,550,776	6,546,710	4,066	0.1	NA
Rhode Island	590,977	591,410	-433	-0.1	NA
Vermont	350,469	357,186	-6,717	-1.9	NA
United States	171,571,000	168,304,000	3,267,000	1.9	NA

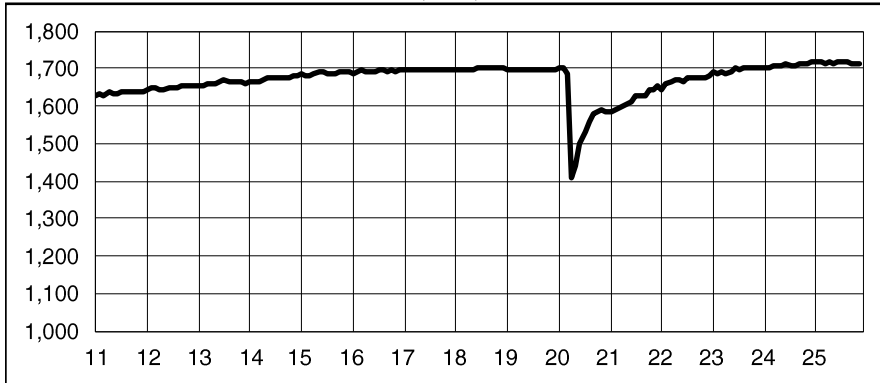
Source: U.S. Department of Labor, Bureau of Labor Statistics

UNEMPLOYMENT RATES

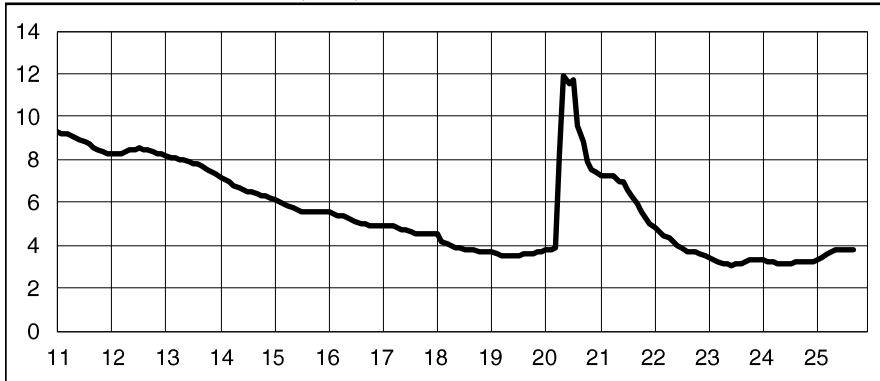
Seven states showed an increase in its unemployment rate over the year.

(Seasonally adjusted)	Nov 2025	Nov 2024	CHANGE	Oct 2025
Connecticut	4.0	3.2	0.8	NA
Maine	3.2	3.4	-0.2	NA
Massachusetts	4.7	4.1	0.6	NA
New Hampshire	3.0	2.8	0.2	NA
New Jersey	5.4	4.6	0.8	NA
New York	4.5	4.4	0.1	NA
Pennsylvania	4.2	3.7	0.5	NA
Rhode Island	4.3	4.5	-0.2	NA
Vermont	2.6	2.5	0.1	NA
United States	4.6	4.2	0.4	NA

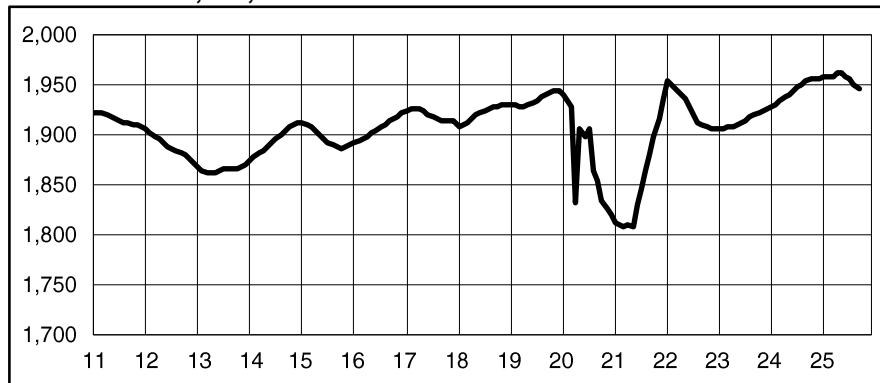
Source: U.S. Department of Labor, Bureau of Labor Statistics

TOTAL NONFARM EMPLOYMENT, SA, 000s

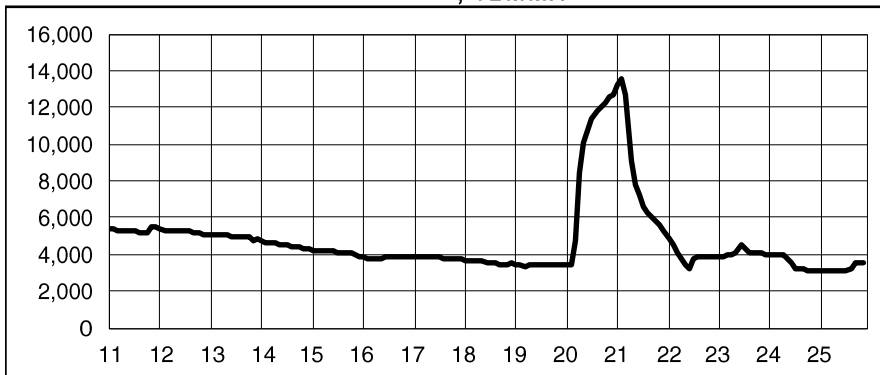
Month	2023	2024	2025
Jan	1,689.5	1,704.0	1,717.6
Feb	1,687.7	1,703.5	1,715.9
Mar	1,688.7	1,705.4	1,711.8
Apr	1,685.8	1,706.7	1,716.6
May	1,691.8	1,708.3	1,712.4
Jun	1,699.2	1,711.0	1,718.5
Jul	1,696.4	1,708.6	1,719.3
Aug	1,698.7	1,707.5	1,719.8
Sep	1,699.5	1,709.6	1,713.0
Oct	1,700.5	1,711.0	1,712.3
Nov	1,700.0	1,712.6	1,714.4
Dec	1,700.1	1,716.1	

UNEMPLOYMENT RATE, SA, %

Month	2023	2024	2025
Jan	3.4	3.3	3.3
Feb	3.3	3.2	3.4
Mar	3.2	3.2	3.6
Apr	3.1	3.1	3.7
May	3.1	3.1	3.8
Jun	3.0	3.1	3.8
Jul	3.1	3.1	3.8
Aug	3.1	3.2	3.8
Sep	3.2	3.2	3.8
Oct	3.3	3.2	NA
Nov	3.3	3.2	4.0
Dec	3.3	3.2	

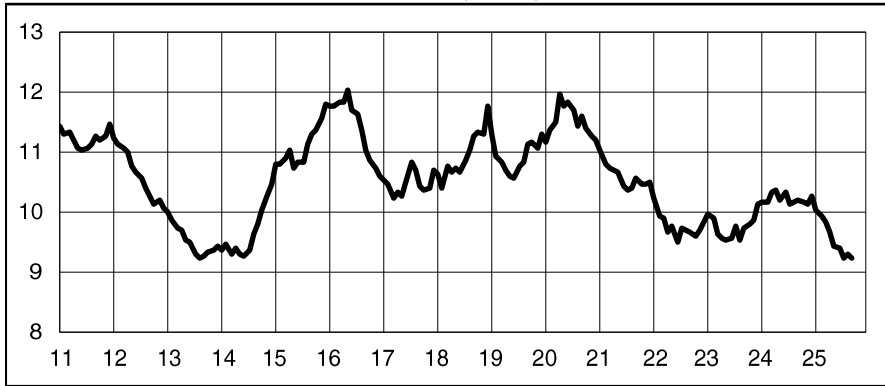
LABOR FORCE, SA, 000s

Month	2023	2024	2025
Jan	1,905.2	1,926.9	1,957.3
Feb	1,905.5	1,929.7	1,957.1
Mar	1,906.3	1,933.0	1,956.4
Apr	1,907.5	1,936.4	1,960.1
May	1,909.0	1,939.9	1,960.2
Jun	1,911.1	1,943.0	1,956.5
Jul	1,913.8	1,946.1	1,954.0
Aug	1,916.3	1,949.5	1,949.9
Sep	1,918.5	1,952.8	1,944.5
Oct	1,920.5	1,955.4	NA
Nov	1,922.4	1,955.9	1,937.7
Dec	1,924.5	1,955.6	

AVERAGE WEEKLY INITIAL CLAIMS, 12MMA

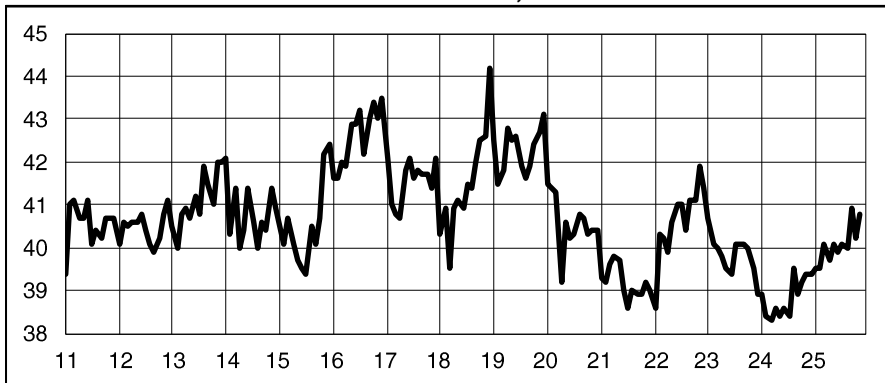
Month	2023	2024	2025
Jan	3,819	4,011	3,139
Feb	3,872	3,977	3,131
Mar	3,926	3,946	3,131
Apr	3,954	3,922	3,131
May	4,095	3,785	3,139
Jun	4,549	3,506	3,141
Jul	4,274	3,211	3,123
Aug	4,092	3,190	3,230
Sep	4,054	3,172	3,487
Oct	4,043	3,153	3,490
Nov	4,033	3,131	3,512
Dec	4,009	3,154	

REAL AVG MFG HOURLY EARNINGS, NSA, 1982-84\$



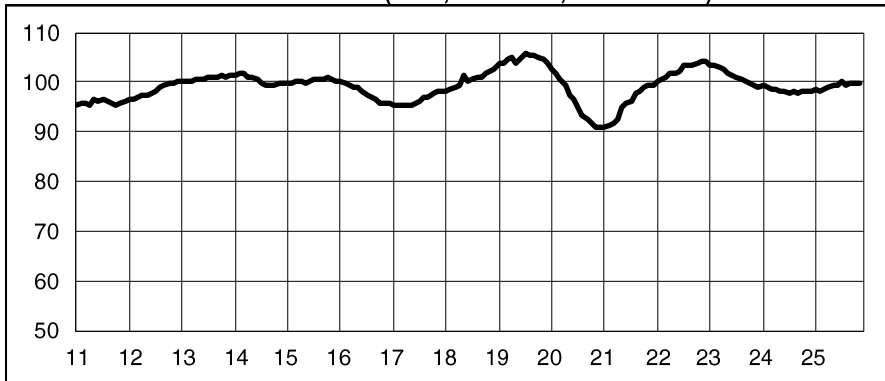
Month	2023	2024	2025
Jan	\$9.96	\$10.14	\$10.03
Feb	\$9.89	\$10.16	\$9.93
Mar	\$9.61	\$10.33	\$9.83
Apr	\$9.55	\$10.34	\$9.66
May	\$9.52	\$10.19	\$9.42
Jun	\$9.55	\$10.32	\$9.38
Jul	\$9.76	\$10.10	\$9.21
Aug	\$9.52	\$10.15	\$9.28
Sep	\$9.71	\$10.17	\$9.21
Oct	\$9.77	\$10.16	NA
Nov	\$9.86	\$10.13	\$9.13
Dec	\$10.12	\$10.24	

AVG MANUFACTURING WEEKLY HOURS, NSA



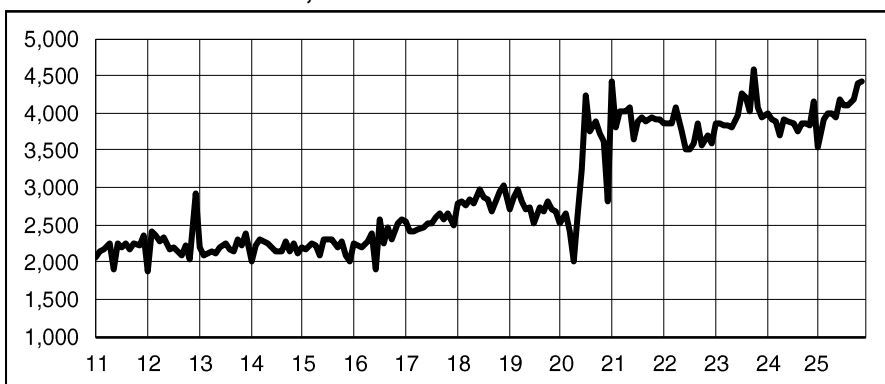
Month	2023	2024	2025
Jan	40.7	38.9	39.5
Feb	40.1	38.4	39.5
Mar	40.0	38.3	40.1
Apr	39.8	38.6	39.7
May	39.5	38.4	40.1
Jun	39.4	38.6	39.9
Jul	40.1	38.4	40.1
Aug	40.1	39.5	40.0
Sep	40.1	38.9	40.9
Oct	40.0	39.2	40.2
Nov	39.5	39.4	40.8
Dec	38.9	39.4	

CT MFG PRODUCTION INDEX (NSA, 12 MMA, 2009=100)



Month	2023	2024	2025
Jan	103.4	99.3	98.3
Feb	103.5	98.7	98.3
Mar	102.9	98.7	98.5
Apr	102.7	98.4	98.9
May	101.9	98.3	99.4
Jun	101.5	98.3	99.4
Jul	101.0	97.8	100.0
Aug	100.7	98.1	99.1
Sep	100.3	97.8	99.6
Oct	99.8	98.0	99.7
Nov	99.4	98.0	99.9
Dec	99.1	98.1	

BUSINESS FORMATION, SA



Month	2023	2024	2025
Jan	3,849	3,999	3,540
Feb	3,871	3,905	3,902
Mar	3,830	3,888	4,005
Apr	3,837	3,694	4,001
May	3,815	3,913	3,952
Jun	3,978	3,894	4,178
Jul	4,272	3,855	4,099
Aug	4,210	3,746	4,112
Sep	4,012	3,867	4,187
Oct	4,589	3,855	4,393
Nov	4,074	3,841	4,436
Dec	3,932	4,146	

CONNECTICUT*Not Seasonally Adjusted*

	Nov 2025	Nov 2024	CHANGE		Oct 2025
			NO.	%	
TOTAL NONFARM EMPLOYMENT.....	1,733,200	1,731,300	1,900	0.1	1,729,000
TOTAL PRIVATE.....	1,489,500	1,490,600	-1,100	-0.1	1,487,200
GOODS PRODUCING INDUSTRIES.....	220,400	221,300	-900	-0.4	220,400
CONSTRUCTION, NAT. RES. & MINING.....	66,700	65,700	1,000	1.5	66,700
MANUFACTURING.....	153,700	155,600	-1,900	-1.2	153,700
Durable Goods.....	121,600	122,200	-600	-0.5	121,300
Fabricated Metal.....	26,500	26,900	-400	-1.5	26,500
Machinery.....	13,000	13,100	-100	-0.8	12,900
Computer and Electronic Product.....	9,900	9,900	0	0.0	9,900
Transportation Equipment.....	47,800	47,600	200	0.4	47,600
Aerospace Product and Parts.....	28,300	29,000	-700	-2.4	28,300
Non-Durable Goods.....	32,100	33,400	-1,300	-3.9	32,400
Chemical.....	7,300	7,500	-200	-2.7	7,400
SERVICE PROVIDING INDUSTRIES.....	1,512,800	1,510,000	2,800	0.2	1,508,600
TRADE, TRANSPORTATION, UTILITIES.....	301,400	307,400	-6,000	-2.0	296,300
Wholesale Trade.....	60,700	61,300	-600	-1.0	60,900
Retail Trade.....	165,000	168,100	-3,100	-1.8	162,000
Motor Vehicle and Parts Dealers.....	21,400	21,500	-100	-0.5	21,400
Building Material.....	15,100	15,400	-300	-1.9	15,400
Food and Beverage Stores.....	41,100	41,100	0	0.0	40,500
General Merchandise Stores.....	29,700	30,600	-900	-2.9	28,200
Transportation, Warehousing, & Utilities....	75,700	78,000	-2,300	-2.9	73,400
Utilities.....	5,300	5,300	0	0.0	5,300
Transportation and Warehousing.....	70,400	72,700	-2,300	-3.2	68,100
INFORMATION.....	30,400	30,400	0	0.0	31,100
Telecommunications.....	5,600	5,700	-100	-1.8	5,700
FINANCIAL ACTIVITIES.....	118,100	118,400	-300	-0.3	118,300
Finance and Insurance.....	98,400	98,600	-200	-0.2	98,500
Credit Intermediation and Related.....	19,600	19,700	-100	-0.5	19,600
Financial Investments and Related.....	23,600	23,500	100	0.4	23,700
Insurance Carriers & Related Activities....	55,200	55,400	-200	-0.4	55,200
Real Estate and Rental and Leasing.....	19,700	19,800	-100	-0.5	19,800
PROFESSIONAL & BUSINESS SERVICES.....	225,300	222,600	2,700	1.2	226,200
Professional, Scientific.....	104,800	101,700	3,100	3.0	103,700
Legal Services.....	12,300	12,000	300	2.5	12,300
Computer Systems Design.....	21,400	21,600	-200	-0.9	21,500
Management of Companies.....	30,500	30,900	-400	-1.3	30,700
Administrative and Support.....	90,000	90,000	0	0.0	91,800
Employment Services.....	24,800	25,000	-200	-0.8	24,900
EDUCATION AND HEALTH SERVICES.....	377,500	375,800	1,700	0.5	373,900
Educational Services.....	76,900	79,600	-2,700	-3.4	76,600
Health Care and Social Assistance.....	300,600	296,200	4,400	1.5	297,300
Hospitals.....	68,000	66,300	1,700	2.6	67,100
Nursing & Residential Care Facilities.....	59,200	57,800	1,400	2.4	58,800
Social Assistance.....	73,800	73,300	500	0.7	73,000
LEISURE AND HOSPITALITY.....	151,500	150,400	1,100	0.7	155,700
Arts, Entertainment, and Recreation.....	26,800	25,600	1,200	4.7	28,000
Accommodation and Food Services.....	124,700	124,800	-100	-0.1	127,700
Food Serv., Restaurants, Drinking Places.....	115,300	115,800	-500	-0.4	118,000
OTHER SERVICES.....	64,900	64,300	600	0.9	65,300
GOVERNMENT.....	243,700	240,700	3,000	1.2	241,800
Federal Government.....	17,300	18,400	-1,100	-6.0	17,300
State Government.....	77,100	75,500	1,600	2.1	76,900
Local Government.....	149,300	146,800	2,500	1.7	147,600

Current month's data are preliminary. Prior months' data have been revised. All data are benchmarked to March 2024.

BRIDGEPORT- STAMFORD- DANBURY LMA

Not Seasonally Adjusted

	Nov 2025	Nov 2024	CHANGE		Oct 2025
			NO.	%	
TOTAL NONFARM EMPLOYMENT	412,300	411,000	1,300	0.3	411,800
TOTAL PRIVATE	365,700	365,300	400	0.1	365,600
GOODS PRODUCING INDUSTRIES	41,500	41,400	100	0.2	41,600
CONSTRUCTION, NAT. RES. & MINING	15,000	14,500	500	3.4	15,000
MANUFACTURING	26,500	26,900	-400	-1.5	26,600
Durable Goods.....	19,600	19,800	-200	-1.0	19,600
SERVICE PROVIDING INDUSTRIES	370,800	369,600	1,200	0.3	370,200
TRADE, TRANSPORTATION, UTILITIES	68,800	70,000	-1,200	-1.7	67,000
Wholesale Trade.....	13,500	13,600	-100	-0.7	13,600
Retail Trade.....	44,500	45,300	-800	-1.8	43,000
Transportation, Warehousing, & Utilities....	10,800	11,100	-300	-2.7	10,400
INFORMATION	12,600	12,700	-100	-0.8	12,800
FINANCIAL ACTIVITIES	34,500	34,600	-100	-0.3	34,600
Finance and Insurance.....	29,200	29,200	0	0.0	29,300
Credit Intermediation and Related.....	7,100	6,900	200	2.9	7,100
Financial Investments and Related.....	17,200	16,800	400	2.4	17,300
PROFESSIONAL & BUSINESS SERVICES	62,100	61,000	1,100	1.8	62,200
Professional, Scientific.....	30,000	29,300	700	2.4	29,900
Administrative and Support.....	22,300	21,300	1,000	4.7	22,500
EDUCATION AND HEALTH SERVICES	86,100	85,800	300	0.3	85,400
Health Care and Social Assistance.....	71,300	70,600	700	1.0	70,600
LEISURE AND HOSPITALITY	41,800	41,500	300	0.7	43,600
Accommodation and Food Services.....	32,500	32,200	300	0.9	33,900
OTHER SERVICES	18,300	18,300	0	0.0	18,400
GOVERNMENT	46,600	45,700	900	2.0	46,200
Federal.....	2,500	2,600	-100	-3.8	2,500
State & Local.....	44,100	43,100	1,000	2.3	43,700

Current month's data are preliminary. Prior months' data have been revised. All data are benchmarked to March 2024.

**HARTFORD-
WEST HARTFORD-
EAST HARTFORD LMA**

	Nov 2025	Nov 2024	CHANGE		Oct 2025
			NO.	%	
TOTAL NONFARM EMPLOYMENT.....	620,200	617,400	2,800	0.5	616,100
TOTAL PRIVATE.....	518,900	516,900	2,000	0.4	515,700
GOODS PRODUCING INDUSTRIES.....	82,800	83,200	-400	-0.5	82,500
CONSTRUCTION, NAT. RES. & MINING.....	24,000	23,400	600	2.6	23,800
MANUFACTURING.....	58,800	59,800	-1,000	-1.7	58,700
Durable Goods.....	48,900	49,500	-600	-1.2	48,700
Non-Durable Goods.....	9,900	10,300	-400	-3.9	10,000
SERVICE PROVIDING INDUSTRIES.....	537,400	534,200	3,200	0.6	533,600
TRADE, TRANSPORTATION, UTILITIES.....	102,700	103,700	-1,000	-1.0	100,300
Wholesale Trade.....	19,400	19,400	0	0.0	19,500
Retail Trade.....	53,500	53,800	-300	-0.6	52,100
Transportation, Warehousing, & Utilities....	29,800	30,500	-700	-2.3	28,700
Transportation and Warehousing.....	28,800	29,500	-700	-2.4	27,700
INFORMATION.....	5,600	5,700	-100	-1.8	5,700
FINANCIAL ACTIVITIES.....	51,400	52,200	-800	-1.5	51,600
Depository Credit Institutions.....	4,700	4,700	0	0.0	4,700
Insurance Carriers & Related Activities....	35,900	36,100	-200	-0.6	36,100
PROFESSIONAL & BUSINESS SERVICES	80,100	79,300	800	1.0	79,800
Professional, Scientific.....	37,900	37,700	200	0.5	37,900
Management of Companies.....	13,100	13,100	0	0.0	13,200
Administrative and Support.....	29,100	28,500	600	2.1	28,700
EDUCATION AND HEALTH SERVICES.....	122,000	119,100	2,900	2.4	120,500
Educational Services.....	16,300	16,200	100	0.6	16,200
Health Care and Social Assistance.....	105,700	102,900	2,800	2.7	104,300
Ambulatory Health Care.....	35,100	34,800	300	0.9	34,700
LEISURE AND HOSPITALITY.....	50,100	49,900	200	0.4	51,000
Accommodation and Food Services.....	41,700	42,300	-600	-1.4	42,400
OTHER SERVICES.....	24,200	23,800	400	1.7	24,300
GOVERNMENT	101,300	100,500	800	0.8	100,400
Federal.....	5,100	5,700	-600	-10.5	5,100
State & Local.....	96,200	94,800	1,400	1.5	95,300

Current month's data are preliminary. Prior months' data have been revised. All data are benchmarked to March 2024.

NEW HAVEN LMA

	Nov 2025	Nov 2024	CHANGE		Oct 2025
			NO.	%	
TOTAL NONFARM EMPLOYMENT.....	299,300	299,500	-200	-0.1	297,300
TOTAL PRIVATE.....	265,300	265,300	0	0.0	263,700
GOODS PRODUCING INDUSTRIES.....	30,800	30,500	300	1.0	30,600
CONSTRUCTION, NAT. RES. & MINING.....	11,000	10,800	200	1.9	10,900
MANUFACTURING.....	19,800	19,700	100	0.5	19,700
Durable Goods.....	13,800	13,800	0	0.0	13,800
SERVICE PROVIDING INDUSTRIES.....	268,500	269,000	-500	-0.2	266,700
TRADE, TRANSPORTATION, UTILITIES.....	58,700	60,100	-1,400	-2.3	57,100
Wholesale Trade.....	10,000	10,100	-100	-1.0	10,000
Retail Trade.....	26,000	26,700	-700	-2.6	25,600
Transportation, Warehousing, & Utilities.....	22,700	23,300	-600	-2.6	21,500
INFORMATION.....	3,300	3,400	-100	-2.9	3,300
FINANCIAL ACTIVITIES.....	10,800	10,700	100	0.9	10,900
Finance and Insurance.....	6,700	6,700	0	0.0	6,700
PROFESSIONAL & BUSINESS SERVICES.....	33,500	32,700	800	2.4	33,400
Administrative and Support.....	16,900	16,500	400	2.4	16,900
EDUCATION AND HEALTH SERVICES.....	93,700	93,500	200	0.2	93,100
Educational Services.....	36,900	37,800	-900	-2.4	36,700
Health Care and Social Assistance.....	56,800	55,700	1,100	2.0	56,400
LEISURE AND HOSPITALITY.....	23,900	23,700	200	0.8	24,600
Accommodation and Food Services.....	20,100	20,200	-100	-0.5	20,600
OTHER SERVICES.....	10,600	10,700	-100	-0.9	10,700
GOVERNMENT.....	34,000	34,200	-200	-0.6	33,600
Federal.....	4,500	4,800	-300	-6.3	4,500
State & Local.....	29,500	29,400	100	0.3	29,100

Current month's data are preliminary. Prior months' data have been revised. All data are benchmarked to March 2024.

HELP WANTED ONLINE

Connecticut HWOL: November 2025

Workforce Area	November 2025 Total Ads	Industry Sector With Most Ads	Ads Count	Occupation With Most Ads	Ads Count
Eastern	6,128	Health Care & Social Assistance	1,993	Registered Nurses	495
North Central	25,420	Health Care & Social Assistance	5,173	Registered Nurses	1,371
Northwest	8,172	Health Care & Social Assistance	2,554	Registered Nurses	582
South Central	12,246	Health Care & Social Assistance	3,890	Registered Nurses	1,222
Southwest	14,082	Health Care & Social Assistance	3,625	Registered Nurses	1,199

Source: CT DOL Research Office Analysis of HWOL Data Series

The Conference Board Help Wanted OnLine Data Series (HWOL) measures the number of new, first-time online jobs and jobs reposted from the previous month for over 16,000 Internet job boards, corporate boards and smaller job sites that serve niche markets and smaller geographic areas. The data can be used as a real-time measure of labor demand. For more information go to <https://www1.ctdol.state.ct.us/imi/hwol.asp>.

**NORWICH-NEW LONDON-
WILLIMANTIC LMA**

	Nov 2025	Nov 2024	CHANGE		Oct 2025
			NO.	%	
TOTAL NONFARM EMPLOYMENT.....	128,600	128,600	0	0.0	129,000
TOTAL PRIVATE.....	100,800	100,900	-100	-0.1	101,200
GOODS PRODUCING INDUSTRIES.....	25,000	25,100	-100	-0.4	25,000
CONSTRUCTION, NAT. RES. & MINING.....	3,600	3,700	-100	-2.7	3,700
MANUFACTURING.....	21,400	21,400	0	0.0	21,300
Durable Goods.....	18,500	18,500	0	0.0	18,400
Non-Durable Goods.....	2,900	2,900	0	0.0	2,900
SERVICE PROVIDING INDUSTRIES.....	103,600	103,500	100	0.1	104,000
TRADE, TRANSPORTATION, UTILITIES.....	20,400	20,900	-500	-2.4	20,300
Wholesale Trade.....	2,500	2,600	-100	-3.8	2,600
Retail Trade.....	14,100	14,300	-200	-1.4	13,900
Transportation, Warehousing, & Utilities....	3,800	4,000	-200	-5.0	3,800
INFORMATION.....	1,300	1,300	0	0.0	1,300
FINANCIAL ACTIVITIES.....	2,600	2,600	0	0.0	2,600
PROFESSIONAL & BUSINESS SERVICES	10,400	10,300	100	1.0	10,400
EDUCATION AND HEALTH SERVICES.....	23,600	23,500	100	0.4	23,500
Health Care and Social Assistance.....	20,600	20,300	300	1.5	20,400
LEISURE AND HOSPITALITY.....	14,300	14,000	300	2.1	14,900
Accommodation and Food Services.....	12,500	12,200	300	2.5	12,900
Food Serv., Restaurants, Drinking Places.	10,800	10,900	-100	-0.9	11,100
OTHER SERVICES.....	3,200	3,200	0	0.0	3,200
GOVERNMENT	27,800	27,700	100	0.4	27,800
Federal.....	2,800	2,800	0	0.0	3,000
State & Local.....	25,000	24,900	100	0.4	24,800

**WATERBURY-
SHELTON LMA**

	Nov 2025	Nov 2024	CHANGE		Oct 2025
			NO.	%	
TOTAL NONFARM EMPLOYMENT.....	162,300	162,800	-500	-0.3	162,400
TOTAL PRIVATE.....	140,500	141,300	-800	-0.6	140,900
GOODS PRODUCING INDUSTRIES.....	26,200	26,200	0	0.0	26,200
CONSTRUCTION, NAT. RES. & MINING.....	8,600	8,300	300	3.6	8,500
MANUFACTURING.....	17,600	17,900	-300	-1.7	17,700
SERVICE PROVIDING INDUSTRIES.....	136,100	136,600	-500	-0.4	136,200
TRADE, TRANSPORTATION, UTILITIES.....	30,300	31,000	-700	-2.3	30,100
Wholesale Trade.....	6,500	6,600	-100	-1.5	6,600
Retail Trade.....	18,300	18,800	-500	-2.7	18,200
Transportation, Warehousing, & Utilities....	5,500	5,600	-100	-1.8	5,300
INFORMATION.....	4,600	4,700	-100	-2.1	4,600
FINANCIAL ACTIVITIES.....	5,500	5,500	0	0.0	5,500
PROFESSIONAL & BUSINESS SERVICES	19,000	19,300	-300	-1.6	19,200
EDUCATION AND HEALTH SERVICES.....	36,700	36,200	500	1.4	36,500
Health Care and Social Assistance.....	33,500	33,000	500	1.5	33,300
LEISURE AND HOSPITALITY.....	13,100	13,200	-100	-0.8	13,600
OTHER SERVICES.....	5,100	5,200	-100	-1.9	5,200
GOVERNMENT	21,800	21,500	300	1.4	21,500
Federal.....	800	800	0	0.0	800
State & Local.....	21,000	20,700	300	1.4	20,700

Current month's data are preliminary. Prior months' data have been revised. All data are benchmarked to March 2024.

MICROPOLITAN AREAS

	Nov 2025	Nov 2024	CHANGE		Oct 2025
			NO.	%	
TOTAL NONFARM EMPLOYMENT					
PUTNAM-NORTHEAST	29,000	28,900	100	0.3	29,100
TORRINGTON-NORTHWEST	38,400	38,200	200	0.5	38,700

NOTE: More industry detail data is available for the State and its five metropolitan and two micropolitan areas at: <http://www.ctdol.state.ct.us/lmi/202/covered.htm>. The data published there differ from the data in the preceding tables in that they are developed from a near-universe count of Connecticut employment covered by the unemployment insurance (UI) program, while the data here is sample-based. The data drawn from the UI program does not contain estimates of employment not covered by unemployment insurance, and is lagged several months behind the current employment estimates presented here.

SEASONALLY ADJUSTED TOTAL NONFARM EMPLOYMENT

Labor Market Areas	Nov 2025	Nov 2024	CHANGE		Oct 2025
			NO.	%	
BRIDGEPORT-STAMFORD-DANBURY.....	410,700	409,200	1,500	0.4	410,400
HARTFORD-W.HARTFORD-E.HARTFORD.....	612,200	609,300	2,900	0.5	610,900
NEW HAVEN LMA.....	294,400	294,400	0	0.0	294,300
NORWICH-NEW LONDON-WILLIMANTIC.....	127,700	127,600	100	0.1	128,300
WATERBURY-SHELTON.....	160,600	161,000	-400	-0.2	160,900
PUTNAM-NORTHEAST*.....	29,000	28,900	100	0.3	29,100
TORRINGTON-NORTHWEST*.....	38,400	38,200	200	0.5	38,700

* Not seasonally adjusted

Current month's data are preliminary. Prior months' data have been revised. All data are benchmarked to March 2024.

Labor Market Area (Not seasonally adjusted)	EMPLOYMENT STATUS	Nov 2025	Nov 2024	CHANGE NO. %		Oct 2025
CONNECTICUT	Civilian Labor Force	1,944,300	1,959,000	-14,700	-0.8	NA
	Employed	1,862,500	1,901,500	-39,000	-2.1	NA
	Unemployed	81,700	57,500	24,200	42.1	NA
	Unemployment Rate	4.2	2.9	1.3	---	NA
Bridgeport-Stamford-Danbury	Civilian Labor Force	515,400	518,400	-3,000	-0.6	NA
	Employed	494,600	503,700	-9,100	-1.8	NA
	Unemployed	20,800	14,700	6,100	41.5	NA
	Unemployment Rate	4.0	2.8	1.2	---	NA
Hartford-W.Hartford-E.Hartford	Civilian Labor Force	614,900	618,900	-4,000	-0.6	NA
	Employed	589,000	600,700	-11,700	-1.9	NA
	Unemployed	25,900	18,200	7,700	42.3	NA
	Unemployment Rate	4.2	2.9	1.3	---	NA
New Haven	Civilian Labor Force	316,700	320,700	-4,000	-1.2	NA
	Employed	303,600	311,400	-7,800	-2.5	NA
	Unemployed	13,100	9,300	3,800	40.9	NA
	Unemployment Rate	4.2	2.9	1.3	---	NA
Norwich-New London-Willimantic	Civilian Labor Force	142,700	144,000	-1,300	-0.9	NA
	Employed	136,700	139,800	-3,100	-2.2	NA
	Unemployed	6,000	4,100	1,900	46.3	NA
	Unemployment Rate	4.2	2.9	1.3	---	NA
Putnam-Northeast	Civilian Labor Force	42,700	42,700	0	0.0	NA
	Employed	40,800	41,400	-600	-1.4	NA
	Unemployed	1,900	1,300	600	46.2	NA
	Unemployment Rate	4.5	3.0	1.5	---	NA
Torrington-Northwest	Civilian Labor Force	46,900	46,900	0	0.0	NA
	Employed	45,100	45,700	-600	-1.3	NA
	Unemployed	1,900	1,200	700	58.3	NA
	Unemployment Rate	4.0	2.6	1.4	---	NA
Waterbury-Shelton	Civilian Labor Force	240,100	242,400	-2,300	-0.9	NA
	Employed	228,900	234,400	-5,500	-2.3	NA
	Unemployed	11,200	8,000	3,200	40.0	NA
	Unemployment Rate	4.7	3.3	1.4	---	NA
UNITED STATES	Civilian Labor Force	171,467,000	168,164,000	3,303,000	2.0	NA
	Employed	164,066,000	161,456,000	2,610,000	1.6	NA
	Unemployed	7,401,000	6,708,000	693,000	10.3	NA
	Unemployment Rate	4.3	4.0	0.3	---	NA

Current month's data are preliminary. Prior months' data have been revised. All data are benchmarked to March 2024.

	AVG WEEKLY EARNINGS				AVG WEEKLY HOURS				AVG HOURLY EARNINGS			
	Nov 2025	Nov 2024	CHG Y/Y	Oct 2025	Nov 2025	Nov 2024	CHG Y/Y	Oct 2025	Nov 2025	Nov 2024	CHG Y/Y	Oct 2025
<i>(Not seasonally adjusted)</i>												
PRODUCTION WORKER												
MANUFACTURING	\$1,182.79	\$1,233.61	-\$50.82	\$1,162.58	40.8	39.4	1.4	40.2	\$28.99	\$31.31	-\$2.32	\$28.92
DURABLE GOODS	1,216.00	1,300.96	-84.96	1,194.03	40.0	38.8	1.2	39.2	30.40	33.53	-3.13	30.46
NON-DUR. GOODS	1,076.21	1,028.28	47.93	1,065.86	43.1	41.0	2.1	43.1	24.97	25.08	-0.11	24.73
CONSTRUCTION	1,644.30	1,555.32	88.98	1,691.65	40.6	39.0	1.6	41.3	40.50	39.88	0.62	40.96
ALL EMPLOYEES												
STATEWIDE												
TOTAL PRIVATE	1,352.18	1,283.05	69.13	1,327.44	34.0	33.5	0.5	33.7	39.77	38.30	1.47	39.39
GOODS PRODUCING	1,578.38	1,546.43	31.95	1,574.22	38.8	39.5	-0.7	38.2	40.68	39.15	1.53	41.21
Construction	1,671.80	1,569.96	101.84	1,689.74	38.3	37.3	1.0	38.1	43.65	42.09	1.56	44.35
Manufacturing	1,493.60	1,498.40	-4.80	1,465.62	40.0	40.0	0.0	39.0	37.34	37.46	-0.12	37.58
SERVICE PROVIDING	1,314.39	1,238.90	75.49	1,283.76	33.2	32.5	0.7	32.9	39.59	38.12	1.47	39.02
Trade, Transp., Utilities	1,053.44	985.16	68.28	1,049.39	33.2	31.8	1.4	32.6	31.73	30.98	0.75	32.19
Financial Activities	2,409.83	2,115.48	294.35	2,294.73	38.1	36.9	1.2	37.6	63.25	57.33	5.92	61.03
Prof. & Business Serv.	1,672.93	1,621.02	51.91	1,610.05	35.8	35.8	0.0	35.2	46.73	45.28	1.45	45.74
Education & Health Ser.	1,230.77	1,168.28	62.49	1,226.10	33.3	32.9	0.4	33.5	36.96	35.51	1.45	36.60
Leisure & Hospitality	651.64	630.70	20.94	642.42	25.9	26.5	-0.6	25.8	25.16	23.80	1.36	24.90
Other Services	849.53	851.14	-1.61	816.22	27.6	28.6	-1.0	26.7	30.78	29.76	1.02	30.57
LABOR MARKET AREAS: TOTAL PRIVATE												
Bridgeport-Stamford-Danbury	1,449.86	1,333.97	115.89	1,407.99	34.3	33.5	0.8	33.7	42.27	39.82	2.45	41.78
Hartford-W.Hartford-E.Hartford	1,314.10	1,318.86	-4.76	1,298.64	34.0	34.0	0.0	33.6	38.65	38.79	-0.14	38.65
New Haven	1,260.85	1,204.09	56.76	1,257.98	33.4	32.8	0.6	33.6	37.75	36.71	1.04	37.44
Norwich-New London-Willimantic	1,145.12	1,120.61	24.51	1,111.20	31.8	32.1	-0.3	31.1	36.01	34.91	1.10	35.73
Waterbury-Shelton	1,194.98	1,151.24	43.74	1,164.91	33.9	33.9	0.0	33.6	35.25	33.96	1.29	34.67

Current month's data are preliminary. Prior months' data have been revised. All data are benchmarked to March 2024.

BUSINESS AND EMPLOYMENT CHANGES ANNOUNCED IN THE NEWS MEDIA

New Companies and Expansions

- Fresh Monkee protein shake chain started by CT mom opens Norwalk location
- Qdoba Mexican restaurant to open in South Windsor's Shops at Evergreen Walk this summer
- Downtown Meriden gets Vietnamese market and takeout restaurant, Boba & Beans
- Twin Peaks restaurant chain announces plans to expand into Connecticut with three new 'lodges'
- T.J. Maxx sets opening date for store at Shops at Stone Bridge in Cheshire
- Key Food to fill supermarket vacancy in Shelton shopping center

Layoffs and Closures

- IHOP closes restaurant at Waterbury Mall after 15 years
- Stop & Shop in Clinton to close
- Walgreens to continue Connecticut store closings in 2026
- Barnes & Noble in Waterbury to close in January, ending 28-year run at Brass Mill Commons
- Bethel's Sycamore Drive-In closed after 78 years of business

(By Place of Residence - Not Seasonally Adjusted)

NOVEMBER 2025

LMA/TOWNS	LABOR FORCE	EMPLOYED	UNEMPLOYED	%	LMA/TOWNS	LABOR FORCE	EMPLOYED	UNEMPLOYED	%
BRIDGEPORT-STAMFORD-DANBURY					HARTFORD-WEST HARTFORD-EAST HARTFORD cont...				
	515,382	494,566	20,816	4.0					
BETHEL	12,031	11,562	469	3.9	HEBRON	4,911	4,729	182	3.7
BRIDGEPORT	77,887	73,734	4,153	5.3	KILLINGWORTH	3,109	2,989	120	3.9
BRIDGEWATER	897	866	31	3.5	LYME	1,284	1,246	38	3.0
BROOKFIELD	9,514	9,158	356	3.7	MANCHESTER	32,389	30,969	1,420	4.4
DANBURY	49,162	47,334	1,828	3.7	MANSFIELD	11,773	11,263	510	4.3
DARIEN	10,456	10,112	344	3.3	MARLBOROUGH	3,258	3,143	115	3.5
EASTON	3,980	3,833	147	3.7	MIDDLEFIELD	2,311	2,222	89	3.9
FAIRFIELD	32,014	30,707	1,307	4.1	MIDDLETOWN	27,132	26,053	1,079	4.0
GREENWICH	31,305	30,169	1,136	3.6	NEW BRITAIN	37,573	35,484	2,089	5.6
MONROE	10,766	10,359	407	3.8	NEWINGTON	17,567	16,927	640	3.6
NEW CANAAN	9,392	9,074	318	3.4	OLD LYME	4,029	3,900	129	3.2
NEW FAIRFIELD	6,954	6,678	276	4.0	OLD SAYBROOK	5,764	5,556	208	3.6
NEW MILFORD	15,709	15,083	626	4.0	PLAINVILLE	10,392	9,961	431	4.1
NEWTOWN	14,808	14,262	546	3.7	PORTLAND	5,127	4,944	183	3.6
NORWALK	53,999	51,916	2,083	3.9	ROCKY HILL	11,323	10,880	443	3.9
REDDING	4,308	4,139	169	3.9	DEEP RIVER	2,599	2,523	76	2.9
RIDGEFIELD	12,517	12,040	477	3.8	SIMSBURY	13,242	12,780	462	3.5
SHERMAN	2,050	1,965	85	4.1	SOMERS	4,991	4,810	181	3.6
STAMFORD	81,632	78,596	3,036	3.7	SOUTHINGTON	24,629	23,747	882	3.6
STRATFORD	29,067	27,759	1,308	4.5	SOUTH WINDSOR	14,365	13,836	529	3.7
TRUMBULL	18,793	18,035	758	4.0	STAFFORD	6,206	5,938	268	4.3
WESTON	5,360	5,200	160	3.0	SUFFIELD	8,036	7,725	311	3.9
WESTPORT	12,928	12,461	467	3.6	TOLLAND	8,394	8,116	278	3.3
WILTON	9,854	9,525	329	3.3	VERNON	16,764	16,070	694	4.1
					WESTBROOK	3,932	3,805	127	3.2
HARTFORD-WEST HARTFORD-EAST HARTFORD					WEST HARTFORD	34,737	33,516	1,221	3.5
	614,886	588,992	25,894	4.2	WETHERSFIELD	14,867	14,309	558	3.8
ANDOVER	1,837	1,777	60	3.3	WILLINGTON	2,954	2,826	128	4.3
AVON	9,638	9,312	326	3.4	WINDSOR	16,588	15,897	691	4.2
BERLIN	11,488	11,088	400	3.5	WINDSOR LOCKS	7,200	6,910	290	4.0
BLOOMFIELD	11,684	11,152	532	4.6					
BOLTON	2,705	2,622	83	3.1	NEW HAVEN				
CANTON	5,093	4,889	204	4.0		316,742	303,596	13,146	4.2
CHESTER	1,926	1,855	71	3.7	BETHANY	3,377	3,258	119	3.5
CLINTON	7,794	7,526	268	3.4	BRANFORD	16,497	15,834	663	4.0
COLUMBIA	2,764	2,659	105	3.8	EAST HAVEN	16,137	15,455	682	4.2
COVENTRY	6,557	6,297	260	4.0	GUILFORD	11,428	11,015	413	3.6
CROMWELL	7,462	7,139	323	4.3	HAMDEN	34,504	33,116	1,388	4.0
DURHAM	4,474	4,335	139	3.1	MADISON	9,558	9,252	306	3.2
EAST GRANBY	2,735	2,631	104	3.8	MERIDEN	32,245	30,732	1,513	4.7
EAST HADDAM	4,648	4,467	181	3.9	MILFORD	32,447	31,263	1,184	3.6
EAST HAMPTON	6,997	6,760	237	3.4	NEW HAVEN	71,668	68,321	3,347	4.7
EAST HARTFORD	26,470	24,993	1,477	5.6	NORTH BRANFORD	7,603	7,326	277	3.6
EAST WINDSOR	6,454	6,197	257	4.0	NORTH HAVEN	14,024	13,519	505	3.6
ELLINGTON	9,016	8,672	344	3.8	ORANGE	7,773	7,496	277	3.6
ENFIELD	21,679	20,773	906	4.2	WALLINGFORD	25,419	24,472	947	3.7
ESSEX	3,884	3,762	122	3.1	WEST HAVEN	29,356	28,000	1,356	4.6
FARMINGTON	14,960	14,418	542	3.6	WOODBIDGE	4,708	4,538	170	3.6
GLASTONBURY	19,407	18,753	654	3.4					
GRANBY	6,108	5,889	219	3.6					
HADDAM	4,810	4,645	165	3.4					
HARTFORD	56,848	53,307	3,541	6.2					

LABOR FORCE CONCEPTS

The **civilian labor force** comprises all state residents age 16 years and older classified as employed or unemployed in accordance with criteria described below. Excluded are members of the military and persons in institutions (correctional and mental health, for example).

The **employed** are all persons who did any work as paid employees or in their own business during the survey week, or who have worked 15 hours or more as unpaid workers in an enterprise operated by a family member. Persons temporarily absent from a job because of illness, bad weather, strike or for personal reasons are also counted as employed whether they were paid by their employer or were seeking other jobs. The **unemployed** are all persons who did not work, but were available for work during the survey week (except for temporary illness) and made specific efforts to find a job in the prior four weeks. Persons waiting to be recalled to a job from which they had been laid off need not be looking for work to be classified as unemployed.

LABOR FORCE ESTIMATES BY TOWN

Town

(By Place of Residence - Not Seasonally Adjusted)

NOVEMBER 2025

LMA/TOWNS	LABOR FORCE	EMPLOYED	UNEMPLOYED	%
NORWICH-NEW LONDON-WILLIMANTIC				
	142,670	136,687	5,983	4.2
BOZRAH	1,373	1,327	46	3.4
COLCHESTER	8,569	8,242	327	3.8
EAST LYME	9,282	8,944	338	3.6
FRANKLIN	973	927	46	4.7
GRISWOLD	6,561	6,292	269	4.1
GROTON	17,868	17,160	708	4.0
LEBANON	3,913	3,776	137	3.5
LEDYARD	7,952	7,652	300	3.8
LISBON	2,096	2,013	83	4.0
MONTVILLE	9,611	9,273	338	3.5
NEW LONDON	13,691	12,966	725	5.3
NORTH STONINGTON	2,762	2,668	94	3.4
NORWICH	20,118	19,213	905	4.5
PRESTON	2,417	2,325	92	3.8
SALEM	2,281	2,185	96	4.2
SPRAGUE	1,603	1,523	80	5.0
STONINGTON	9,606	9,246	360	3.7
WATERFORD	10,277	9,853	424	4.1
WINDHAM	11,718	11,102	616	5.3

PUTNAM-NORTHEAST				
	51,532	49,268	2,264	4.4
ASHFORD	2,045	1,945	100	4.9
BROOKLYN	4,190	4,000	190	4.5
CANTERBURY	2,742	2,631	111	4.0
CHAPLIN	1,303	1,253	50	3.8
EASTFORD	930	895	35	3.8
HAMPTON	922	884	38	4.1
KILLINGLY	9,168	8,711	457	5.0
PLAINFIELD	8,296	7,938	358	4.3
POMFRET	2,316	2,239	77	3.3
PUTNAM	4,877	4,641	236	4.8
SCOTLAND	807	785	22	2.7
STERLING	1,729	1,646	83	4.8
THOMPSON	5,604	5,361	243	4.3
UNION	420	401	19	4.5
VOLUNTOWN	1,556	1,504	52	3.3
WOODSTOCK	4,628	4,435	193	4.2

Not Seasonally Adjusted:				
CONNECTICUT	1,944,300	1,862,500	81,700	4.2
UNITED STATES	171,467,000	164,066,000	7,401,000	4.3
Seasonally Adjusted:				
CONNECTICUT	1,937,700	1,860,500	77,200	4.0
UNITED STATES	171,571,000	163,741,000	7,831,000	4.6

TORRINGTON-NORTHWEST				
	46,941	45,053	1,888	4.0
BARKHAMSTED	2,106	2,033	73	3.5
BURLINGTON	5,442	5,263	179	3.3
CANAAN	580	554	26	4.5
COLEBROOK	832	801	31	3.7
CORNWALL	872	844	28	3.2
GOSHEN	1,914	1,854	60	3.1
HARTLAND	1,156	1,124	32	2.8
HARWINTON	3,260	3,161	99	3.0
KENT	1,455	1,396	59	4.1
LITCHFIELD	4,536	4,381	155	3.4
MORRIS	1,288	1,239	49	3.8
NEW HARTFORD	3,992	3,878	114	2.9
NORFOLK	855	829	26	3.0
NORTH CANAAN	1,453	1,407	46	3.2
ROXBURY	1,398	1,361	37	2.6
SALISBURY	2,048	1,977	71	3.5
SHARON	1,611	1,569	42	2.6
TORRINGTON	19,861	18,959	902	4.5
WARREN	732	712	20	2.7
WASHINGTON	2,020	1,958	62	3.1
WINCHESTER	5,486	5,212	274	5.0

WATERBURY-SHELTON				
	240,147	228,913	11,234	4.7
ANSONIA	10,584	10,028	556	5.3
BEACON FALLS	3,584	3,443	141	3.9
BETHLEHEM	1,806	1,741	65	3.6
BRISTOL	34,774	33,188	1,586	4.6
CHESHIRE	14,196	13,667	529	3.7
DERBY	6,658	6,302	356	5.3
MIDDLEBURY	4,055	3,901	154	3.8
NAUGATUCK	18,482	17,663	819	4.4
OXFORD	7,240	6,971	269	3.7
PLYMOUTH	6,614	6,333	281	4.2
PROSPECT	4,896	4,695	201	4.1
SEYMOUR	9,547	9,160	387	4.1
SHELTON	22,855	21,908	947	4.1
SOUTHBURY	9,982	9,563	419	4.2
THOMASTON	4,387	4,214	173	3.9
WATERBURY	53,090	49,771	3,319	6.3
WATERTOWN	12,603	12,101	502	4.0
WOLCOTT	9,501	9,163	338	3.6
WOODBURY	5,290	5,100	190	3.6

For the sake of simplicity, the federal Hartford-West Hartford-East Hartford area is referred to in Connecticut DOL publications as the Hartford LMA. All Labor Market Areas (LMAs) in Connecticut except two are federally designated areas for developing labor statistics. The two nonfederal areas are Torrington-Northwest LMA and Putnam-Northeast LMA.

LABOR FORCE CONCEPTS (Continued)

The **unemployment rate** represents the number unemployed as a percent of the civilian labor force.

With the exception of those persons temporarily absent from a job or waiting to be recalled to one, persons with no job and who are not actively looking for one are counted as "not in the labor force".

Over the course of a year, the size of the labor force and the levels of employment undergo fluctuations due to such seasonal events as changes in weather, reduced or expanded production, harvests, major holidays and the opening and closing of schools. Because these seasonal events follow a regular pattern each year, their influence on statistical trends can be eliminated by adjusting the monthly statistics. **Seasonal Adjustment** makes it easier to observe cyclical and other nonseasonal developments.



HOUSING PERMIT ACTIVITY BY TOWN

TOWN	OCT 2025	YR TO DATE 2025	2024	TOWN	OCT 2025	YR TO DATE 2025	2024	TOWN	OCT 2025	YR TO DATE 2025	2024
Andover	0	0	0	Griswold	1	7	5	Preston	2	10	7
Ansonia	1	10	7	Groton	1	21	26	Prospect	1	4	4
Ashford	0	0	1	Guilford	0	18	38	Putnam	0	3	4
Avon	1	10	8	Haddam	0	14	71	Redding	0	3	5
Barkhamsted	1	3	10	Hamden	67	88	0	Ridgefield	2	9	29
Beacon Falls	0	4	5	Hampton	1	4	0	Rocky Hill	0	1	98
Berlin	1	24	20	Hartford	0	10	26	Roxbury	0	6	5
Bethany	0	0	1	Hartland	0	0	2	Salem	2	8	4
Bethel	0	69	84	Harwinton	1	15	21	Salisbury	1	7	4
Bethlehem	1	2	0	Hebron	2	12	11	Scotland	0	1	1
Bloomfield	0	28	62	Kent	1	8	9	Seymour	1	6	1
Bolton	0	1	1	Killingly	3	25	33	Sharon	0	4	11
Bozrah	0	3	4	Killingworth	1	9	4	Shelton	1	208	7
Branford	17	49	119	Lebanon	35	44	5	Sherman	2	10	11
Bridgeport	59	212	59	Ledyard	1	10	14	Simsbury	0	72	7
Bridgewater	0	3	1	Lisbon	0	3	6	Somers	0	6	5
Bristol	4	38	35	Litchfield	2	7	10	South Windsor	0	6	15
Brookfield	2	21	153	Lyme	0	1	1	Southbury	3	16	18
Brooklyn	1	29	11	Madison	0	27	20	Southington	5	48	46
Burlington	1	14	13	Manchester	3	28	25	Sprague	1	2	3
Canaan	0	0	1	Mansfield	0	4	202	Stafford	5	17	26
Canterbury	0	12	11	Marlborough	1	3	5	Stamford	355	1542	74
Canton	0	21	21	Meriden	1	21	24	Sterling	0	13	9
Chaplin	0	0	1	Middlebury	2	14	20	Stonington	3	35	26
Cheshire	10	82	81	Middlefield	1	8	5	Stratford	0	144	108
Chester	0	1	3	Middletown	1	13	17	Suffield	1	9	19
Clinton	3	23	11	Milford	13	113	105	Thomaston	0	0	2
Colchester	2	12	12	Monroe	0	15	13	Thompson	1	10	25
Colebrook	0	1	0	Montville	2	11	15	Tolland	2	24	15
Columbia	0	1	2	Morris	0	3	5	Torrington	0	4	12
Cornwall	0	0	5	Naugatuck	2	23	18	Trumbull	0	1	36
Coventry	3	15	13	New Britain	0	2	38	Union	0	0	2
Cromwell	1	10	9	New Canaan	6	34	16	Vernon	5	16	4
Danbury	3	55	12	New Fairfield	0	5	4	Voluntown	0	3	7
Darien	3	16	33	New Hartford	0	6	7	Wallingford	3	21	22
Deep River	0	1	7	New Haven	52	451	539	Warren	0	2	4
Derby	1	36	91	New London	1	6	11	Washington	1	5	4
Durham	0	4	4	New Milford	5	55	50	Waterbury	2	20	34
East Granby	7	44	2	Newington	0	6	128	Waterford	2	42	245
East Haddam	1	15	13	Newtown	1	57	16	Watertown	0	6	31
East Hampton	2	16	30	Norfolk	0	0	1	West Hartford	17	152	176
East Hartford	0	2	7	North Branford	1	8	6	West Haven	0	24	31
East Haven	0	4	4	North Canaan	0	3	0	Westbrook	1	9	9
East Lyme	2	37	38	North Haven	3	9	16	Weston	1	5	6
East Windsor	1	3	15	North Stonington	2	28	9	Westport	4	214	119
Eastford	1	3	4	Norwalk	2	172	339	Wethersfield	1	7	9
Easton	0	6	4	Norwich	0	77	8	Willington	0	3	6
Ellington	1	11	12	Old Lyme	1	27	18	Wilton	0	302	48
Enfield	0	3	5	Old Saybrook	5	45	21	Winchester	0	0	2
Essex	0	1	6	Orange	1	1	0	Windham	1	6	1
Fairfield	3	49	145	Oxford	4	29	11	Windsor	0	58	2
Farmington	2	12	171	Plainfield	1	16	9	Windsor Locks	0	2	3
Franklin	1	8	7	Plainville	0	6	11	Wolcott	2	17	18
Glastonbury	1	16	16	Plymouth	1	4	3	Woodbridge	2	21	12
Goshen	0	10	12	Pomfret	0	7	6	Woodbury	0	8	13
Granby	0	5	98	Portland	0	7	11	Woodstock	2	12	6
Greenwich	8	64	49								

BUSINESS STARTS AND TERMINATIONS

Registrations and terminations of business entities as recorded with the U.S. Census Bureau and the Connecticut Department of Labor (DOL) are an indication of new business formation and activity. DOL business starts include new employers which have become liable for unemployment insurance taxes during the quarter, as well as new establishments opened by existing employers. DOL business terminations are those accounts discontinued due to inactivity (no employees) or business closure, and accounts for individual business establishments that are closed by still active employers. The Census's business formations include limited liability companies, limited liability partnerships, and foreign-owned (out-of-state) and domestic-owned (in-state) corporations.

CONSUMER PRICE INDEX

The Consumer Price Index (CPI), computed and published by the U.S. Bureau of Labor Statistics, is a measure of the average change in prices over time in a fixed market basket of goods and services. It is based on prices of food, clothing, shelter, fuels, transportation fares, charges for doctors' and dentists' services, drugs and other goods and services that people buy for their day-to-day living. The Northeast region is comprised of the New England states, New York, New Jersey and Pennsylvania.

EMPLOYMENT COST INDEX

The Employment Cost Index (ECI) covers both wages and salaries and employer costs for employee benefits for all occupations and establishments in both the private nonfarm sector and state and local government. The ECI measures employers' labor costs free from the influences of employment shifts among industries and occupations. The base period for all data is December 2005 when the ECI is 100.

GAMING DATA

Indian Gaming Payments are amounts received by the State as a result of the slot compact with the two Federally recognized tribes in Connecticut, which calls for 25 percent of net slot receipts to be remitted to the State. Indian Gaming Slots are the total net revenues from slot machines only received by the two Federally recognized Indian tribes.

HOURS AND EARNINGS ESTIMATES

Production worker earnings and hours estimates include full- and part-time employees working within manufacturing industries. Hours worked and earnings data are computed based on payroll figures for the week including the 12th of the month. Average hourly earnings are affected by such factors as premium pay for overtime and shift differential as well as changes in basic hourly and incentive rates of pay. Average weekly earnings are the product of weekly hours worked and hourly earnings. These data are developed in cooperation with the U.S. Department of Labor, Bureau of Labor Statistics.

INITIAL CLAIMS

Average weekly initial claims are calculated by dividing the total number of new claims for unemployment insurance received in the month by the number of weeks in the month. A minor change in methodology took effect with data published in the March 1997 issue of the DIGEST. Data have been revised back to January 1980.

INSURED UNEMPLOYMENT RATE

Primarily a measure of unemployment insurance program activity, the insured unemployment rate is the 13-week average of the number of people claiming unemployment benefits divided by the number of workers covered by the unemployment insurance system.

LABOR FORCE ESTIMATES

Labor force estimates are a measure of the work status of people who live in Connecticut. Prepared under the direction of the U.S. Bureau of Labor Statistics, the statewide estimates are the product of a signal-plus noise model, which uses results from the Current Population Survey (CPS), a monthly survey of Connecticut households, counts of claimants for unemployment benefits, and establishment employment estimates. The 2015 LAUS Redesign includes improved time-series models for the census divisions, states, select substate areas, and the balances of those states; an improved real-time benchmarking procedure to the national Current Population Survey (CPS) estimates; an improved smoothed seasonal adjustment procedure; and improved treatment of outliers. Non-modeled area estimation improvements include: updated Dynamic Residency Ratios (DRR); more accurate estimates for all-other employment; more accurate estimation of agricultural employment; and improved estimation of non-covered agricultural unemployment. Handbook estimation is now done at the city/town level instead of at the Labor Market Area (LMA) level in Connecticut, which better reflects local conditions. The Redesign also introduces estimation inputs from the American Community Survey (ACS) to replace inputs that were previously obtained from the decennial census long-form survey. Labor force data, reflecting persons employed by place of residence, are not directly comparable to the place-of-work industry employment series. In the labor force estimates, workers involved in labor disputes are counted as employed. The labor force data also includes agricultural workers, unpaid family workers, domestics and the self-employed. Because of these conceptual differences, total labor force employment is almost always different from nonfarm wage and salary employment.

LABOR MARKET AREAS

All Labor Market Areas (LMAs) in Connecticut except two are federally-designated areas for developing labor statistics. For the sake of simplicity, the federal Hartford-West Hartford-East Hartford area is referred to in Connecticut DOL publications as the Hartford LMA. The two nonfederal areas are Torrington-Northwest LMA and Putnam-Northeast LMA. Industry employment and labor force data estimates contained in Connecticut Department of Labor publications are prepared following the same statistical procedures developed by the U.S. Department of Labor, Bureau of Labor Statistics, whether for federally designated or state-determined areas.

NONFARM EMPLOYMENT ESTIMATES

Nonfarm employment estimates are derived from a survey of businesses to measure jobs by industry. The estimates include all full- and part-time wage and salary employees who worked during or received pay for the pay period which includes the 12th of the month. Excluded from these estimates are proprietors, self-employed workers, private household employees and unpaid family workers. In some cases, due to space constraints, all industry estimates are not shown. These data are developed in cooperation with the U.S. Department of Labor, Bureau of Labor Statistics.

UI COVERED WAGES

UI covered wages is the total amount paid to those employees who are covered under the Connecticut's Unemployment Insurance (UI) law for services performed during the quarter. The fluctuations in the 1992-93 period reflect the effect of the changes in the tax law and the massive restructuring in the state's economy.

ECONOMIC INDICATORS AT A GLANCE

(Percent change from prior year; see pages 5-8 for reference months or quarters)

Leading General Drift Indicator.....	1.3	CT Mfg. Production Index.....	2.5	Occupancy Rate.....	0.2
Coincident General Drift Indicator.....	2.0	Production Worker Hours.....	-0.6	Tourism Website Visitors.....	39.4
Connecticut Real GDP.....	2.1	Industrial Electricity Sales.....	1.4	Air Passenger Count.....	-7.1
United States Real GDP.....	2.1	Personal Income	5.1	Gaming Slots.....	4.5
New England Real GDP.....	1.9	UI Covered Wages	5.5	Employment Cost Index (U.S.)	
Connecticut PCPI.....	4.6			Total.....	3.5
United States PCPI.....	4.5	Business Activity		Wages & Salaries.....	3.6
New England PCPI.....	4.5	New Housing Permits.....	42.7	Benefit Costs.....	3.5
Phil. Fed's CT Coincident Index....	0.9	Electricity Sales.....	-1.1	Consumer Prices	
Phil. Fed's US Coincident Index...	2.1	Construction Contracts Index.....	162.9	U.S. City Average.....	2.7
		New Auto Registrations.....	12.3	Northeast Region.....	3.1
		Exports.....	3.2	NY-Newark-Jersey City.....	3.0
		S&P 500: Monthly Close.....	13.5	Boston-Cambridge-Newton...	2.8
Total Nonfarm Employment	0.1	Business Starts		Interest Rates	
Labor Force.....	-0.9	Business Formation.....	15.5	Prime.....	-0.81 *
Employed.....	-1.7	Dept. of Labor.....	2.0	Conventional Mortgage.....	-0.57 *
Unemployed.....	23.5	Business Terminations			
Unemployment Rate	0.8 *	Dept. of Labor.....	2.0		
Labor Force Participation Rate...	-1.0 *	State Revenues	-1.1		
Employment-Population Ratio...	-1.4 *	Corporate Tax.....	-13.6		
Average Weekly Initial Claims ..	10.1	Personal Income Tax.....	2.2		
Avg Insured Unempl. Rate	0.39 *	Real Estate Conveyance Tax..	17.1		
U-6 Rate	0.6 *	Sales & Use Tax.....	0.1		
Prod. Worker Avg Wkly Hrs	3.6	Gaming Payments.....	2.4		
PW Avg Hourly Earnings	-7.4				
PW Avg Weekly Earnings	-4.1				

*Percentage point change
 **Less than 0.05 percent
 NA = Not Available

THE CONNECTICUT ECONOMIC DIGEST

January 2026

THE CONNECTICUT

ECONOMIC DIGEST

A publication of
 The Connecticut Departments of Labor



Mailing address:

Connecticut Economic Digest
Connecticut Department of Labor
Office of Research
200 Folly Brook Boulevard
Wethersfield, CT 06109-1114

The Connecticut Economic Digest
 is available on the internet at:
<http://www.ctdol.state.ct.us/lmi>

DO YOU WANT TO BE NOTIFIED BY EMAIL WHEN THE DIGEST IS PUBLISHED EACH MONTH?

Simply email to listserv@list.ct.gov with only the following in the body of the message, leave subject blank:
SUBSCRIBE DOL-CTEconomicDigest your_name
 (type in your name where it says your_name)

If you wish to have your name removed from our mailing list, please check here and return this page (or a photocopy) to the address at left.

If your address has changed, please check here, make the necessary changes to your address label and return this page to the address at left.

If you receive more than one copy of this publication, please check here and return this page from the duplicate copy to the address at left.