

# ECONOMIC DIGEST

Vol. 19 No. 1 A joint publication of the Connecticut Department of Labor & the Connecticut Department of Economic and Community Development

## JANUARY 2014

### IN THIS ISSUE...

**The 2014 Economic Outlook**  
..... 1-5

#### Economic Indicators

on the Overall Economy .....	5
Individual Data Items .....	6-8
Comparative Regional Data .....	9
Economic Indicator Trends .....	10-11
Help Wanted OnLine .....	15
Business and Employment Changes Announced in the News Media .....	19
<b>Labor Market Areas:</b>	
Nonfarm Employment .....	12-17
Sea. Adj. Nonfarm Employment .....	14
Labor Force .....	18
Hours and Earnings .....	19
<b>Cities and Towns:</b>	
Labor Force .....	20-21
Housing Permits .....	22
Technical Notes .....	23
At a Glance .....	24

### In November...

#### Nonfarm Employment

Connecticut..... 1,655,300  
Change over month ..... +0.24%  
Change over year ..... +1.0%

United States ..... 136,765,000  
Change over month ..... +0.15%  
Change over year ..... +1.7%

#### Unemployment Rate

Connecticut..... 7.6%  
United States ..... 7.0%

#### Consumer Price Index

United States ..... 233.069  
Change over year ..... +1.2%

## The 2014 Economic Outlook

By Mark R. Prisloe, Associate Economist, (Mark.Prisloe@ct.gov), DECD

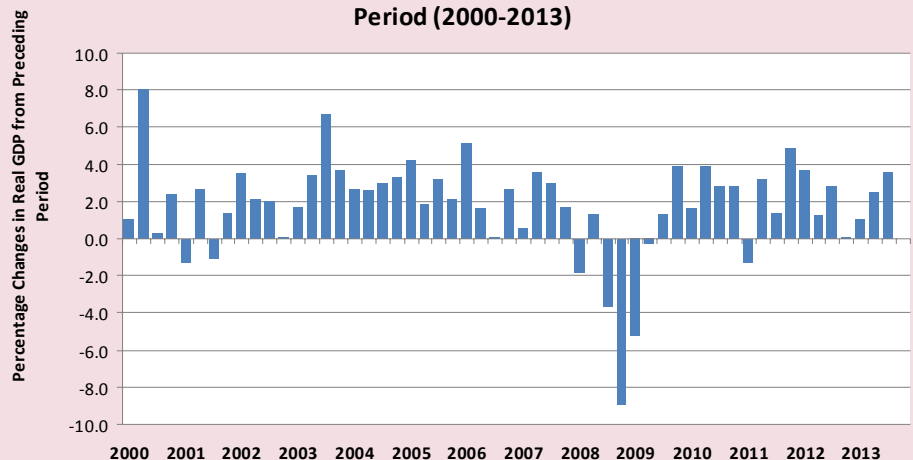
**A**s is customary at the beginning of the year, this issue of the *Digest* looks at the economic prospects for 2014. This outlook attempts to interpret recent data and their trends, and to offer some insights about what they mean for the U.S. and Connecticut economies in the year ahead.

### The Nation

The outlook for the U.S. economy is reasonably optimistic pending a positive resolution of two fiscal deadlines that loom early in the year, notably the January 15, 2014 end of the continuing resolution funding of the federal government, and the February 7, 2014 end of the nation's borrowing authority. A short-term slowdown in Q4-2013 resulting from the partial government shutdown in October is likely only temporary.

Otherwise, the U.S. Gross Domestic Product (GDP) has grown for four and a half years since the "Great Recession" ended in Q2-2009. The Real Gross Domestic Product (RGDP), or constant dollar value of all goods and services produced by labor and capital located in the U.S., since then has averaged 2.3% at an annual rate from the preceding quarter (Figure 1).<sup>1</sup> After growing 2.5% in 2010, 1.8% in 2011, 2.8% in 2012, and an estimated 3.6% in Q3-2013, RGDP growth near 3.0% is likely in 2014. The New England Economic Partnership (NEEP), based on Moody's Analytics underlying macroeconomic forecast, sees RGDP growth at 3.2% in 2014.<sup>2</sup> The National Association of Business Economists (NABE) outlook panel forecasts "3.0% in the spring through the autumn quarters of 2014."<sup>3</sup>

Figure 1: Quarterly Changes in U.S. Real GDP from Preceding Period (2000-2013)



*The Connecticut Economic Digest* is published monthly by the Connecticut Department of Labor, Office of Research, and the Connecticut Department of Economic and Community Development. Its purpose is to regularly provide users with a comprehensive source for the most current, up-to-date data available on the workforce and economy of the state, within perspectives of the region and nation.

The annual subscription is \$50. Send subscription requests to: *The Connecticut Economic Digest*, Connecticut Department of Labor, Office of Research, 200 Folly Brook Boulevard, Wethersfield, CT 06109-1114. Make checks payable to the Connecticut Department of Labor. Back issues are \$4 per copy. The Digest can be accessed free of charge from the DOL Web site. Articles from *The Connecticut Economic Digest* may be reprinted if the source is credited. Please send copies of the reprinted material to the Managing Editor. The views expressed by the authors are theirs alone and may not reflect those of the DOL or DECD.

**Managing Editor:** Jungmin Charles Joo

**Associate Editor:** Sarah C. Pilipaitis

We would like to acknowledge the contributions of many DOL Research and DECD staff and Rob Damroth to the publication of the Digest.

**Connecticut Department of Labor**

Sharon Palmer, Commissioner  
Dennis Murphy, Deputy Commissioner

Andrew Condon, Ph.D., Director  
Office of Research  
200 Folly Brook Boulevard  
Wethersfield, CT 06109-1114  
Phone: (860) 263-6275  
Fax: (860) 263-6263  
E-Mail: dol.econdigest@ct.gov  
Website: <http://www.ctdol.state.ct.us/lmi>



**Connecticut Department of Economic and Community Development**

Catherine Smith, Commissioner  
Ronald Angelo, Deputy Commissioner  
Christopher Bergstrom, Deputy Commissioner

505 Hudson Street  
Hartford, CT 06106-2502  
Phone: (860) 270-8000  
Fax: (860) 270-8200  
E-Mail: [decd@ct.gov](mailto:decd@ct.gov)  
Website: <http://www.decd.org>



**U.S. Employment and Unemployment**

Total seasonally-adjusted nonfarm payroll employment, since the end of the recession, has increased by nearly 7 million jobs, after averaging losses of 201,000 jobs a month in Q3-Q4 2009, gains of 148,000 jobs a month in 2010-2012, and improving to 189,000 jobs per month through November in 2013 (Figure 2). This improved job growth trend should continue in 2014. In 2013, the U.S. unemployment rate fell to 7.0% in November from 7.8% in November a year ago,<sup>4</sup> the lowest in five years, and a declining unemployment rate will likely continue in 2014.

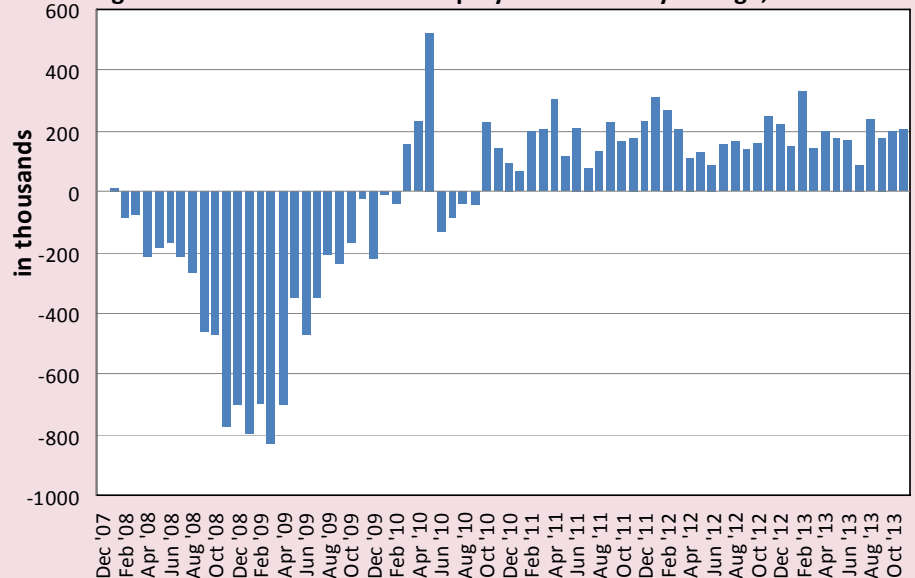
The Conference Board Leading Economic Index™ (LEI) for the U.S. in 2013 continued to post gains. Kathy Bostjancic, Director of Macroeconomic Analysis at The Conference Board said: “The recent increase in the index supports our forecast that the U.S. economy is poised to grow somewhat faster at 2.3 in 2014 compared to 1.6 percent in 2013.”<sup>5</sup> Ken Goldstein added: “Overall, the data reflect strengthening conditions in the underlying economy. However, headwinds still persist from the labor market, accompanied by business caution and concern about federal budget

battles. The biggest challenge to date has been relatively weak consumer demand, which continues to be restrained by weak wage growth and slumping confidence.”<sup>6</sup>

**The Federal Reserve**

The other issue that has been of national concern for much of the past year is the announced plan of the Federal Reserve Open Market Committee (FOMC) to “taper,” or begin reducing, its \$85 billion per month bond buying program. The likelihood of tapering was rumored since last summer and was initially expected in September. The Fed has cautioned all along, however, that it would do so only commensurate with a real improvement in the labor market and pending no serious risk of inflation. Indications are that such a reduction in the bond buying program may occur in 2014. Such a decision would likely begin a gradual increase in interest rates, but have the potential to raise rates associated with capital investment borrowing and home mortgages, prospects that would not be welcome in an only sluggishly recovering economy. The Fed has pursued a deliberate low interest rate policy throughout the recovery. So it

**Figure 2: U.S. Total Nonfarm Employment Monthly Change, SA**



remains to be seen the degree and the pace that the FOMC will adopt in the year ahead, but it is surely a factor in any outlook for 2014.

A related issue is the successor to Fed Chairman Ben Bernanke whose term expires January 31, 2014. In October, the President made a nomination of the current Fed Vice Chairwoman, Janet Yellen, for the post. Her likely confirmation suggests that the FOMC policy is less likely to change with any immediate urgency. A consistently strong supporter of Bernanke, she is also considered the architect of the once almost unprecedented original course of action that the Fed took in initiating the rounds of so-called “quantitative easing” (QE). Stock and bond market investors have reacted mostly favorably to her selection. Late in 2013, the Dow Jones Industrial Average was up +24.08% for the year-to-date. The S&P Index was up +27.30% and the NASDAQ above 4,000 for the first time since 2000.

### **Growth Prospects**

The forecast embodied in this article will assume any U.S. budget and debt ceiling issues are resolved, because there are a number of positive developments going into 2014. Growth prospects remain positive for a number of reasons. These include the 54th consecutive monthly expansion through November 2013 of the overall economy based on the Manufacturing ISM Report on Business®; the ISM report noted that: “Comments from the panel are generally positive and optimistic about increasing demand and improving business conditions.”<sup>7</sup> Moreover, November’s PMI [Purchasing Managers Index] registered 57.3 percent, the highest of the year. A reading above 50% indicates that the manufacturing economy is generally expanding; below 50% indicates that it is generally contracting.<sup>8</sup> Consumer spending also saw gains with average monthly increases of 1.9% in

2013 from the same month a year ago.<sup>9</sup> The Thomson Reuters/ University of Michigan final Index of Consumer Sentiment slipped late in the year, but had advanced to 85.1 in July 2013, the highest level in six years.<sup>10</sup> The Conference Board Consumer Confidence Index® reached a five-and-a-half year high of 81.8 in August 2013. The Index decreased sharply to 72.4 (1985=100) after the federal government shutdown and debt-ceiling crisis in October, and declined again in November. The Index now stands at 70.4 (1985=100).<sup>11</sup> Real exports of goods and services increased 1.6% in Q2-2013 from the year-ago quarter, compared with 0.7% in Q1-2013. Real nonresidential fixed investment (purchases of plant and equipment) gained 2.4% in both Q1 and Q2-2013, compared with Q1 and Q2-2012. New homes sales grew 20.6% through mid-year from a year ago, jumped by 25.4% in October, and new building permits climbed 6.2% in October to the highest level in more than five years, while U.S. home prices rose 0.7% in September. Construction spending climbed 7.1% for the year to an annual rate of \$915.1 billion in August — a four-and-a-half year high, according to the Commerce Department. Retail sales in October were up 3.9% from the same month last year. There is also continued momentum in car sales, up 8.9% YTD through October 2013 over 2012.<sup>12</sup> Meanwhile U.S. inflation remains tame; Social Security recipients, for example, will receive a Cost of Living Adjustment (COLA) in 2014 of only 1.5%, one of the smallest increases since automatic adjustments were adopted in 1975.

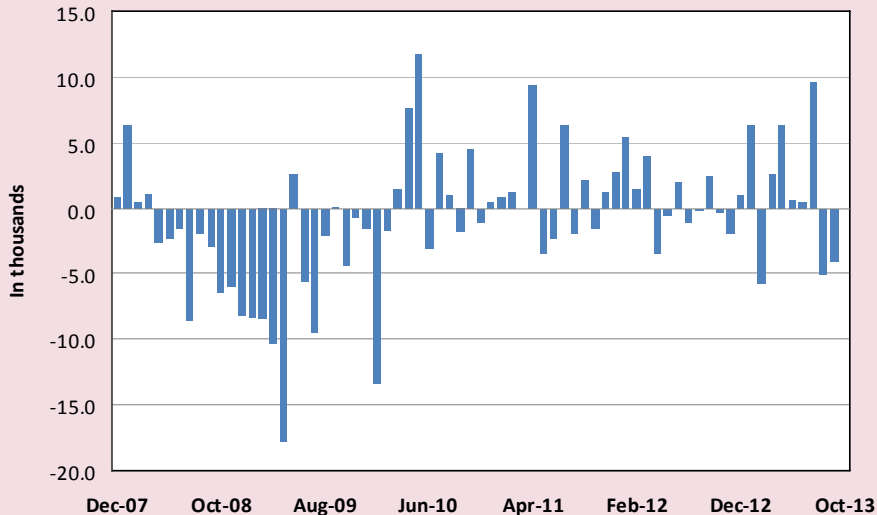
### **Connecticut**

Connecticut’s economy should continue to experience modest growth in 2014. Connecticut’s real state gross domestic product (SGDP), the broadest measure of

the state’s economic health, decreased 0.1% in 2012<sup>13</sup> (the latest year available), making Connecticut the only state to see a decline. The next release of GDP by state is scheduled for the summer of 2014. The release will include revised statistics for 1997-2012 and advance statistics for 2013. When released for 2013, Connecticut should see positive growth again that should continue into 2014. Personal income grew 0.9% in Q2-2012, seasonally adjusted at quarterly rates, declined by 0.5% in Q3-2012, grew 3.1% in Q4-2012, declined again by 1.6% in Q1-2013, but grew again at 0.9% in Q2-2013, all relative to the preceding quarter.<sup>14</sup> As forecasted by the Connecticut Department of Labor, Personal Income for Q1-2014 will increase by 2.7% from Q1-2013.<sup>15</sup> Increases in Personal Disposable Income indicate sustained growth in consumer spending which can lead to additional job gains.

The Connecticut recession from March 2008 through February 2010 saw the loss of 121,200 seasonally-adjusted non-farm jobs (Figure 3). Jobs regained through November 2013 numbered 63,500 (52.4%), or 1,411 jobs per month since February 2010 when the recovery began. The private sector has recovered somewhat faster and has regained 71,900 (62.8%, 1,591 per month) of the 114,000 private jobs that were lost during the same period. NEEP forecasts Connecticut will gain about 18,700 jobs, or 11% in 2014. The state’s unemployment rate, after peaking at 9.4% for five consecutive months in 2010 and hovering around 8.0% for much of 2013, declined to 7.6% in November 2013. NEEP forecasts Connecticut’s unemployment rate will be 7.5 % in 2014. Seasonally adjusted average weekly initial claims for unemployment insurance peaked at 7,561 in March 2009, but declined to 4,674 (-38.0%) by November 2013. Through October Connecticut’s total non-farm employment was up

Figure 3: Connecticut SA Nonfarm Payroll Employment Monthly Change



every month over the same month a year ago.

### Connecticut’s Fiscal Outlook

The state’s fiscal outlook is vastly improved for 2014 evidenced by a FY 2013 surplus of \$398.8 million, based on Generally Accepted Accounting Principles (GAAP). A new biennial budget for fiscal years ending in 2014-2015, introduced in February 2013 is in place. Moreover, the state is currently on track for a \$117.1 million surplus in FY 2014.

### Connecticut Budget Outlook

In September 2013, the governor’s budget office estimated the General Fund for fiscal year 2014 “reflects a [year-end] \$4.4 million balance from operations” on a GAAP basis.<sup>16</sup> “Consensus Revenues” for FY 2014 were estimated to be \$17,249.6 million.<sup>17</sup> The Connecticut legislature’s Office of Fiscal Analysis (OFA) projects a \$117.1 million surplus for FY 2014, as shown in Table 1.<sup>18</sup>

### Housing

The state’s housing market experienced modest growth in 2012 and the U.S. Census-reported residential permit data through October 2013 had grown by 20.0% compared to the same period a year ago. Moreover, the “data seems to indicate that the gradual growth will continue.”<sup>19</sup> NEEP expects Connecticut housing permits that peaked at 12,269 in Q3-2005 and reached bottom at 3,173 for all of 2011 will rebound to 5,496 in 2013, and likely reach 6,810 in 2014. According to NEEP, existing Connecticut single family median home prices peaked at \$326,000 in Q2-2007, but fell to \$239,000 in 2012, and are expected to average \$270,000 for 2014. Existing home sales might show a gain from 40,000 in 2013 to 44,400 in 2014.<sup>20</sup>

### Initiatives

The Connecticut economy benefitted from an aggressive campaign to strengthen small business. The Small Business

Express Program (EXP) provides loans and grants to Connecticut’s small businesses to spur job creation and growth and has seen vigorous activity since its inception. The state has assisted 957 companies with more than \$114 million in loans and grants. With this much-needed capital, up to 3,159 jobs are expected to be created and 9,119 retained. Likewise the state’s “First Five” and “Next Five” job initiatives have promised substantial growth in employment and capital investment in Connecticut. At year’s end (2013), eleven business deals had been announced as part of the ongoing expansion program, which leveraged nearly \$1.3 billion in private investment. Among the eleven companies — Cigna, ESPN, NBC, Alexion Pharmaceuticals, CareCentrix, Sustainable Building Systems LLC, Deloitte, Bridgewater Associates, Charter Communications, Navigators Group, Inc., and Pitney Bowes — up to 5,248 jobs are expected to be created and 12,690 retained.

### Conclusion

Connecticut and the nation’s recoveries are affected by large uncertainties. Many of the issues are the same as in past years: the fiscal and economic effects of financial and healthcare reform, immigration reform, Eurozone debt, and China, as well as other geopolitical risks to the global economy. Yet, expansionary monetary policies in both Europe and Japan are likely to boost the outlook for economic growth in both of those regions. Internationally and domestically recent trends point to 2014 building on the progress of 2013 —continued slow growth but gradual improvement in the unemployment rate. The housing market saw improvement in terms of sales and permits in 2013 and the data suggest that will likely continue in 2014. The combination of the state’s jobs agenda and the uptick in capital investments will continue to improve the business climate.

Table 1: Connecticut Budget Outlook

(\$-millions)	FY 14 \$	FY 15 \$	FY 16 \$	FY 17 \$	FY 18 \$
Est. Expenditures	17,132.5	17,524.3	18,790.6	19,633.4	20,631.6
Est. Revenue	17,249.6	17,532.7	17,687.2	18,406.6	19,195.1
<b>Surplus/(Deficit)</b>	<b>117.1</b>	<b>8.4</b>	<b>(1,103.4)</b>	<b>(1,226.8)</b>	<b>(1,436.5)</b>
% of Est. Expenditures	0.7%	0.0%	-5.9%	-6.2%	-7.0%



Connecticut's growth in total output that put it behind 49 other states in 2012 is expected to turn around by 2014. The "Connecticut Bioscience" initiative, which has already produced additional interest in this industry, is an indicator of potential success ahead. On balance, therefore, we should expect generally favorable developments in 2014. ■

<sup>1</sup> Bureau of Economic Analysis (BEA), Press release BEA 13-57: "Gross Domestic Product: Third Quarter 2013 (second estimate)," December 5, 2013. <http://www.bea.gov/newsreleases/national/gdp/gdpnewsrelease.htm>.

<sup>2</sup> New England Economic Partnership, Fall Economic Outlook Conference: "Universal Economics? Boston's Role in the Regional Economic Network," November 14, 2013, p. 24.

<sup>3</sup> NABE, "NABE Panelists Forecast a Gradual Acceleration in Economic Expansion," October 21, 2013. [http://nabe.com/NABE\\_Outlook\\_Summary](http://nabe.com/NABE_Outlook_Summary).

<sup>4</sup> BLS, "The Employment Situation – November 2013," December 6, 2013. <http://stats.bls.gov/news.release/pdf/empisit.pdf>.

<sup>5</sup> The Conference Board, Latest Press Release, November 27, 2013. <http://www.conference-board.org/data/bcicountry.cfm?cid=1>.

<sup>6</sup> See Note 5.

<sup>7</sup> September Manufacturing ISM Report on Business®, October 1, 2013. <http://www.ism.ws/ISMReport/MfgROB.cfm?navItemNumber=12942>.

<sup>8</sup> November 2013 Manufacturing ISM Report on Business®, December 2, 2013. <http://www.ism.ws/ISMReport/MfgROB.cfm?navItemNumber=12942>.

<sup>9</sup> BEA, "News Release: Personal Income and Outlays: September 2013," September 27, 2013.

<sup>10</sup> Thomson/Reuters, "Consumer Confidence at Six Year Peak," July 26, 2013. <http://thomsonreuters.com/press-releases/pdf/2013-07-26-consumer-confidence-at-six-year-peak.pdf>.

<sup>11</sup> The Conference Board, Consumer Confidence Survey, "Consumer Confidence Declines Again in November," November 26, 2013. <http://www.conference-board.org/data/consumerconfidence.cfm>.

<sup>12</sup> Census Bureau, "Advance Monthly Sales for Retail and Food Services October 2013," Nov. 20, 2013 –CB13-185. [http://www.census.gov/retail/marts/www/marts\\_current.pdf](http://www.census.gov/retail/marts/www/marts_current.pdf).

<sup>13</sup> BEA, News Release: GDP by State, "Widespread Economic Growth in 2012." [http://www.bea.gov/newsreleases/regional/gdp\\_state/gsp\\_newsrelease.htm](http://www.bea.gov/newsreleases/regional/gdp_state/gsp_newsrelease.htm), June 6, 2013.

<sup>14</sup> BEA, "News Release: State Personal Income: Second Quarter 2013." <http://www.bea.gov/newsreleases/regional/spi/2013/pdf/spi0913.pdf>. September 30, 2013.

<sup>15</sup> *The Connecticut Economic Digest*, Vol. 18, No. 10, October 2013, p. 6.

<sup>16</sup> Office of Policy and Management (OPM), Letter of Benjamin Barnes to Comptroller Kevin Lembo, September 20, 2013. <http://www.ct.gov/opm/lib/opm/2013Sep20ComptrollersLetter.pdf>.

<sup>17</sup> OPM, Letter of Benjamin Barnes and Alan Calandro, "State of Connecticut Consensus Revenue" Pursuant to Section 2-36c of the C.G.S for current FY 13-15 biennium and next three ensuing fiscal years, November 8, 2013. <http://www.ct.gov/opm/lib/opm/budget/consensusrevenue/fy2014/consensusrev08nov13.pdf>.

<sup>18</sup> Table extracted from OFA, "Fiscal Accountability Report to the Appropriations and Finance Committees as required by CGS Sec. 2-36b," November 15, 2013, p. 1.

<sup>19</sup> Kolie Sun, "State's 2012 Housing Market in Review," *The Connecticut Economic Digest*, Vol. 18, No. 7, July 2013, p. 5.

<sup>20</sup> NEEP, See Note 2.

## GENERAL ECONOMIC INDICATORS

<i>(Seasonally adjusted)</i>	3Q	3Q	CHANGE		2Q
	2013	2012	NO.	%	2013
<b>General Drift Indicator (1986=100)*</b>					
<b>Leading</b>	109.6	105.7	3.9	3.7	104.8
<b>Coincident</b>	109.0	108.9	0.1	0.1	108.3
<b>Farmington Bank Business Barometer (1992=100)**</b>	127.2	124.4	2.8	2.3	125.7
<b>Philadelphia Fed's Coincident Index (July 1992=100)***</b>	<b>NOV</b>	<b>NOV</b>			<b>OCT</b>
<i>(Seasonally adjusted)</i>	<b>2013</b>	<b>2012</b>			<b>2013</b>
<b>Connecticut</b>	155.99	150.59	5.40	3.6	155.11
<b>United States</b>	156.93	152.35	4.58	3.0	156.54

Sources: \**The Connecticut Economy*, University of Connecticut \*\*Farmington Bank \*\*\*Federal Reserve Bank of Philadelphia

The *Connecticut Economy's* **General Drift Indicators** are composite measures of the four-quarter change in three coincident (Connecticut Manufacturing Production Index, nonfarm employment, and real personal income) and four leading (housing permits, manufacturing average weekly hours, Hartford help-wanted advertising, and initial unemployment claims) economic variables, and are indexed so 1986 = 100.

The **Farmington Bank Business Barometer** is a measure of overall economic growth in the state of Connecticut that is derived from non-manufacturing employment, real disposable personal income, and manufacturing production.

The **Philadelphia Fed's Coincident Index** summarizes current economic condition by using four coincident variables: nonfarm payroll employment, average hours worked in manufacturing, the unemployment rate, and wage and salary disbursements deflated by the consumer price index (U.S. city average).

Total nonfarm  
employment increased  
over the year.

## EMPLOYMENT BY INDUSTRY SECTOR

	NOV	NOV	CHANGE		OCT
	2013	2012	NO.	%	2013
<b>TOTAL NONFARM</b>	1,655.3	1,638.8	16.5	1.0	1,651.3
<b>Natural Res &amp; Mining</b>	0.6	0.6	0.0	0.0	0.6
<b>Construction</b>	55.9	50.3	5.6	11.1	55.7
<b>Manufacturing</b>	159.7	162.9	-3.2	-2.0	160.9
<b>Trade, Transportation &amp; Utilities</b>	302.3	295.6	6.7	2.3	297.6
<b>Information</b>	30.6	31.1	-0.5	-1.6	30.6
<b>Financial Activities</b>	129.3	131.1	-1.8	-1.4	128.3
<b>Professional and Business Services</b>	205.1	202.1	3.0	1.5	206.1
<b>Education and Health Services</b>	329.0	319.6	9.4	2.9	325.7
<b>Leisure and Hospitality</b>	145.6	144.6	1.0	0.7	147.3
<b>Other Services</b>	59.9	62.2	-2.3	-3.7	61.0
<b>Government*</b>	237.3	238.7	-1.4	-0.6	237.5

Source: Connecticut Department of Labor \* Includes Native American tribal government employment

Initial claims for  
unemployment insurance  
decreased from a year  
ago.

## UNEMPLOYMENT

	NOV	NOV	CHANGE		OCT
	2013	2012	NO.	%	2013
<b>Unemployment Rate, resident (%)</b>	7.6	8.3	-0.7	---	7.9
<b>Labor Force, resident (000s)</b>	1,848.9	1,871.4	-22.5	-1.2	1,853.7
<b>Employed (000s)</b>	1,708.6	1,715.8	-7.2	-0.4	1,706.6
<b>Unemployed (000s)</b>	140.3	155.5	-15.2	-9.8	147.1
<b>Average Weekly Initial Claims</b>	4,674	7,300	-2,626	-36.0	4,801
<b>Avg. Insured Unemp. Rate (%)</b>	3.06	4.02	-0.96	---	3.08
	<b>3Q2013</b>	<b>3Q2012</b>			<b>2Q2013</b>
<b>U-6 Rate (%)</b>	14.1	14.7	-0.6	---	14.6

Sources: Connecticut Department of Labor; U.S. Bureau of Labor Statistics

The production worker  
weekly earnings fell over  
the year.

## MANUFACTURING ACTIVITY

	NOV	NOV	CHANGE		OCT	SEP
	2013	2012	NO.	%	2013	2013
<b>Production Worker Avg Weekly Hours</b>	41.9	40.7	1.2	2.9	40.9	--
<b>Prod. Worker Avg Hourly Earnings</b>	21.45	23.01	-1.56	-6.8	21.39	--
<b>Prod. Worker Avg Weekly Earnings</b>	898.76	936.51	-37.75	-4.0	874.85	--
<b>CT Mfg. Production Index (2005=100)</b>	85.9	87.4	-1.5	-1.8	88.5	91.3
<b>Production Worker Hours (000s)</b>	3,926	4,073	-147	-3.6	3,910	--
<b>Industrial Electricity Sales (mil kWh)*</b>	270	281	-11.1	-3.9	283	295

Sources: Connecticut Department of Labor; U.S. Department of Energy  
\*Latest two months are forecasted.

Personal income for first  
quarter 2014 is  
forecasted to increase 2.7  
percent from a year  
earlier.

## INCOME

	1Q*	1Q	CHANGE		4Q*
	2014	2013	NO.	%	2013
<b>Personal Income</b>	\$221,434	\$215,629	5,805	2.7	\$219,505
<b>UI Covered Wages</b>	\$102,446	\$100,010	2,436	2.4	\$101,673

Source: Bureau of Economic Analysis  
\*Forecasted by Connecticut Department of Labor

## BUSINESS ACTIVITY

*New auto registrations rose over the year.*

	MONTH	LEVEL	Y/Y %	YEAR TO DATE		%
			CHG	CURRENT	PRIOR	CHG
<b>New Housing Permits*</b>	NOV 2013	290	-21.4	5,507	4,674	17.8
<b>Electricity Sales (mil kWh)</b>	OCT 2013	2,128	-0.9	24,953	24,842	0.4
<b>Construction Contracts</b>						
<b>Index (1980=100)</b>	NOV 2013	290.7	22.8	---	---	---
<b>New Auto Registrations</b>	NOV 2013	17,081	1.6	179,667	171,073	5.0
<b>Air Cargo Tons (000s)</b>	NOV 2013	10,563	-15.3	119,723	129,332	-7.4
<b>Exports (Bil. \$)</b>	3Q 2013	4.03	8.5	12.53	11.94	4.9
<b>S&amp;P 500: Monthly Close</b>	NOV 2013	1,805.81	27.5	---	---	---

Sources: Connecticut Department of Economic and Community Development; U.S. Department of Energy, Energy Information Administration; Connecticut Department of Revenue Services; F.W. Dodge; Connecticut Department of Motor Vehicles; Connecticut Department of Transportation, Bureau of Aviation and Ports

\* Estimated by the Bureau of the Census

## BUSINESS STARTS AND TERMINATIONS

*Net business formation, as measured by starts minus stops registered with the Secretary of the State, was up over the year.*

	MO/QTR	LEVEL	Y/Y %	YEAR TO DATE		%
			CHG	CURRENT	PRIOR	CHG
<b>STARTS</b>						
<b>Secretary of the State</b>	OCT 2013	2,390	5.3	21,905	23,590	-7.1
<b>Department of Labor</b>	1Q2013	1,999	-16.9	1,999	2,405	-16.9
<b>TERMINATIONS</b>						
<b>Secretary of the State</b>	OCT 2013	1,218	32.8	11,523	9,201	25.2
<b>Department of Labor</b>	1Q2013	1,370	-17.9	1,370	1,668	-17.9

Sources: Connecticut Secretary of the State; Connecticut Department of Labor

## STATE REVENUES

*Total all revenues were up from a year ago.*

	YEAR TO DATE					
	NOV 2013	NOV 2012	% CHG	CURRENT	PRIOR	% CHG
<i>(Millions of dollars)</i>						
<b>TOTAL ALL REVENUES*</b>	963.9	938.4	2.7	15,417.7	14,454.7	6.7
<b>Corporate Tax</b>	63.9	17.6	263.1	735.8	604.6	21.7
<b>Personal Income Tax</b>	449.6	437.9	2.7	8,041.2	7,512.8	7.0
<b>Real Estate Conv. Tax</b>	14.6	12.9	13.2	154.9	127.6	21.4
<b>Sales &amp; Use Tax</b>	290.7	344.8	-15.7	3,650.9	3,640.4	0.3
<b>Indian Gaming Payments**</b>	23.5	23.7	-0.5	268.4	294.6	-8.9

Sources: Connecticut Department of Revenue Services; Division of Special Revenue

\*Includes all sources of revenue; Only selected sources are displayed; Most July receipts are credited to the prior fiscal year and are not shown. \*\*See page 23 for explanation.

## TOURISM AND TRAVEL

*Indian gaming slots rose over the year.*

	MONTH	LEVEL	Y/Y %	YEAR TO DATE		%
			CHG	CURRENT	PRIOR	CHG
<b>Info Center Visitors***</b>	NOV 2013	17,929	65.5	268,720	253,215	6.1
<b>Major Attraction Visitors</b>	NOV 2013	84,873	1.8	1,507,037	1,582,983	-4.8
<b>Air Passenger Count</b>	NOV 2013	467,254	3.4	4,917,926	4,960,795	-0.9
<b>Indian Gaming Slots (Mil.\$)*</b>	NOV 2013	1,138	2.2	12,776	13,608	-6.1
<b>Travel and Tourism Index**</b>	3Q 2013	---	1.9	---	---	---

Sources: Connecticut Department of Transportation, Bureau of Aviation and Ports; Connecticut Commission on Culture and Tourism; Division of Special Revenue

\*See page 23 for explanation

\*\*The Connecticut Economy, University of Connecticut

\*\*\*Due to state budget cuts CT Info Centers suspended some services causing a drop in visitors.

Compensation cost for the nation rose 1.9 percent over the year.

## EMPLOYMENT COST INDEX

Private Industry Workers (Dec. 2005 = 100)	Seasonally Adjusted			Not Seasonally Adjusted		
	SEP	JUN	3-Mo	SEP	SEP	12-Mo
	2013	2013	% Chg	2013	2012	% Chg
<b>UNITED STATES TOTAL</b>	119.0	118.5	0.4	119.0	116.8	1.9
<b>Wages and Salaries</b>	118.4	118.0	0.3	118.5	116.4	1.8
<b>Benefit Costs</b>	120.3	119.6	0.6	120.3	117.9	2.0
<b>NORTHEAST TOTAL</b>	---	---	---	122.5	120.2	1.9
<b>Wages and Salaries</b>	---	---	---	118.7	116.7	1.7

Source: U.S. Department of Labor, Bureau of Labor Statistics

U.S. inflation rate increased 1.2 percent over the year.

## CONSUMER NEWS

(Not seasonally adjusted)	MO/QTR	LEVEL	% CHANGE	
			Y/Y	P/P*
<b>CONSUMER PRICES</b>				
<b>CPI-U (1982-84=100)</b>				
<b>U.S. City Average</b>	NOV 2013	233.069	1.2	-0.2
<b>Purchasing Power of \$ (1982-84=\$1.00)</b>	NOV 2013	0.429	-1.2	0.2
<b>Northeast Region</b>	NOV 2013	249.503	1.0	0.1
<b>NY-Northern NJ-Long Island</b>	NOV 2013	257.377	1.2	0.1
<b>Boston-Brockton-Nashua**</b>	NOV 2013	252.230	0.9	0.1
<b>CPI-W (1982-84=100)</b>				
<b>U.S. City Average</b>	NOV 2013	229.133	1.1	-0.3

Sources: U.S. Department of Labor, Bureau of Labor Statistics; The Conference Board

\*Change over prior monthly or quarterly period

\*\*The Boston CPI can be used as a proxy for New England and is measured every other month.

Conventional mortgage rose to 4.26 percent over the month.

## INTEREST RATES

(Percent)	NOV 2013	OCT 2013	NOV 2012
<b>Prime</b>	3.25	3.25	3.25
<b>Federal Funds</b>	0.08	0.09	0.16
<b>3 Month Treasury Bill</b>	0.07	0.05	0.09
<b>6 Month Treasury Bill</b>	0.10	0.08	0.14
<b>1 Year Treasury Note</b>	0.12	0.12	0.18
<b>3 Year Treasury Note</b>	0.58	0.63	0.36
<b>5 Year Treasury Note</b>	1.37	1.37	0.67
<b>7 Year Treasury Note</b>	2.07	1.99	1.08
<b>10 Year Treasury Note</b>	2.72	2.62	1.65
<b>20 Year Treasury Note</b>	3.50	3.38	2.39
<b>Conventional Mortgage</b>	4.26	4.19	3.35

Sources: Federal Reserve; Federal Home Loan Mortgage Corp.



## NONFARM EMPLOYMENT

All nine states in the region gained jobs over the year.

<i>(Seasonally adjusted; 000s)</i>	NOV	NOV	CHANGE		OCT
	2013	2012	NO.	%	2013
<b>Connecticut</b>	1,655.3	1,638.8	16.5	1.0	1,651.3
<b>Maine</b>	601.1	596.5	4.6	0.8	601.4
<b>Massachusetts</b>	3,345.7	3,290.4	55.3	1.7	3,339.2
<b>New Hampshire</b>	638.7	634.9	3.8	0.6	637.7
<b>New Jersey</b>	3,978.6	3,907.7	70.9	1.8	3,961.7
<b>New York</b>	8,934.4	8,806.7	127.7	1.5	8,929.9
<b>Pennsylvania</b>	5,771.5	5,738.2	33.3	0.6	5,761.8
<b>Rhode Island</b>	470.6	465.1	5.5	1.2	469.2
<b>Vermont</b>	309.2	305.9	3.3	1.1	307.0
<b>United States</b>	136,765.0	134,472.0	2,293.0	1.7	136,562.0

Source: U.S. Department of Labor, Bureau of Labor Statistics

## LABOR FORCE

Three states posted increases in the labor force from last year.

<i>(Seasonally adjusted; 000s)</i>	NOV	NOV	CHANGE		OCT
	2013	2012	NO.	%	2013
<b>Connecticut</b>	1,848.9	1,871.4	-22.5	-1.2	1,853.7
<b>Maine</b>	710.3	706.3	4.0	0.6	709.9
<b>Massachusetts</b>	3,483.2	3,479.4	3.8	0.1	3,487.8
<b>New Hampshire</b>	740.8	744.1	-3.3	-0.4	741.6
<b>New Jersey</b>	4,531.8	4,630.4	-98.6	-2.1	4,562.4
<b>New York</b>	9,658.9	9,589.0	69.9	0.7	9,654.6
<b>Pennsylvania</b>	6,457.9	6,531.2	-73.3	-1.1	6,471.7
<b>Rhode Island</b>	550.8	562.8	-12.0	-2.1	550.7
<b>Vermont</b>	350.8	356.2	-5.4	-1.5	351.6
<b>United States</b>	155,294.0	155,319.0	-25.0	0.0	154,839.0

Source: U.S. Department of Labor, Bureau of Labor Statistics

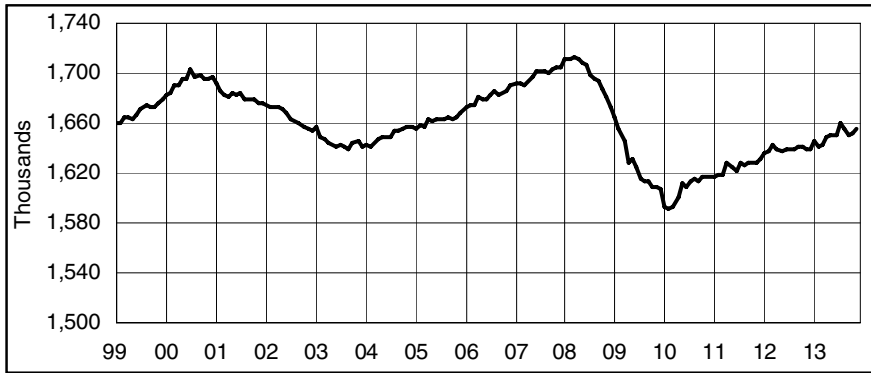
## UNEMPLOYMENT RATES

Eight of nine states showed a decrease in its unemployment rate over the year.

<i>(Seasonally adjusted)</i>	NOV	NOV	CHANGE	OCT
	2013	2012		2013
<b>Connecticut</b>	7.6	8.3	-0.7	7.9
<b>Maine</b>	6.4	7.2	-0.8	6.7
<b>Massachusetts</b>	7.1	6.7	0.4	7.2
<b>New Hampshire</b>	5.1	5.7	-0.6	5.1
<b>New Jersey</b>	7.8	9.6	-1.8	8.4
<b>New York</b>	7.4	8.2	-0.8	7.7
<b>Pennsylvania</b>	7.3	8.1	-0.8	7.5
<b>Rhode Island</b>	9.0	10.0	-1.0	9.2
<b>Vermont</b>	4.4	5.0	-0.6	4.5
<b>United States</b>	7.0	7.8	-0.8	7.3

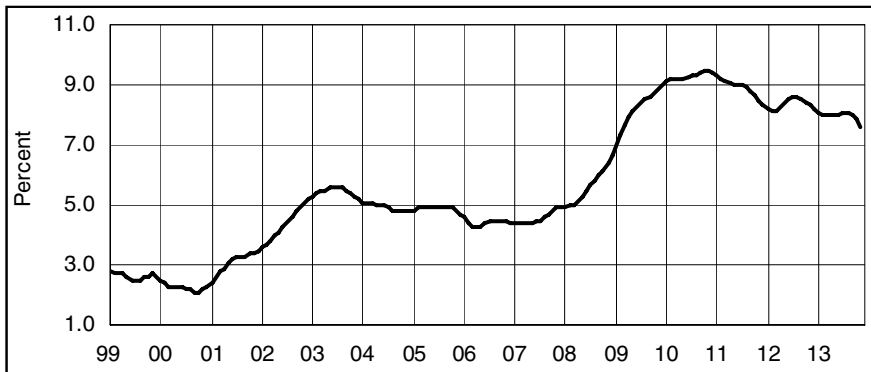
Source: U.S. Department of Labor, Bureau of Labor Statistics

**NONFARM EMPLOYMENT** *(Seasonally adjusted)*



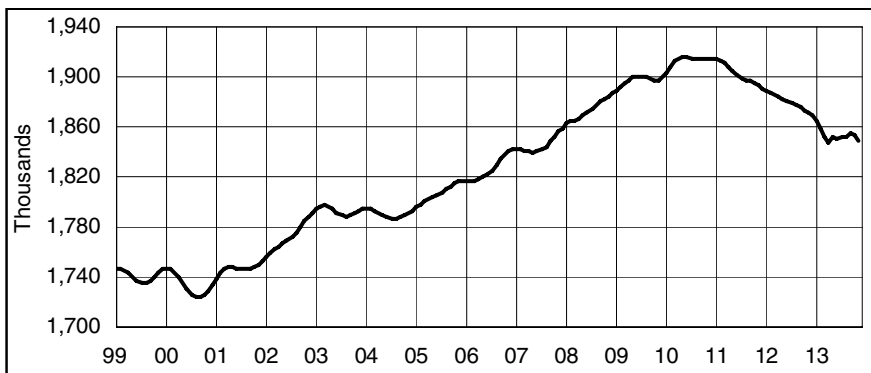
Month	2011	2012	2013
Jan	1,617.6	1,636.5	1,646.1
Feb	1,618.8	1,638.0	1,640.4
Mar	1,618.7	1,642.0	1,643.0
Apr	1,628.0	1,638.5	1,649.4
May	1,624.6	1,637.9	1,650.0
Jun	1,622.3	1,639.9	1,650.4
Jul	1,628.6	1,638.8	1,660.0
Aug	1,626.7	1,638.6	1,654.9
Sep	1,628.8	1,641.0	1,650.8
Oct	1,627.2	1,640.7	1,651.3
Nov	1,628.4	1,638.8	1,655.3
Dec	1,631.1	1,639.7	

**UNEMPLOYMENT RATE** *(Seasonally adjusted)*



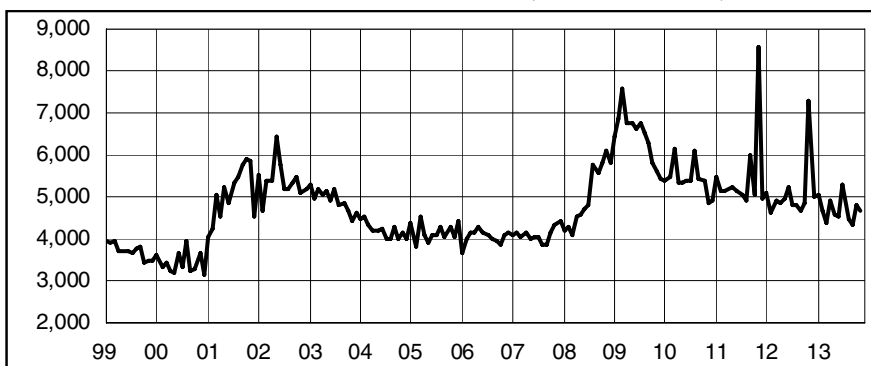
Month	2011	2012	2013
Jan	9.3	8.2	8.1
Feb	9.2	8.1	8.0
Mar	9.1	8.1	8.0
Apr	9.0	8.2	8.0
May	9.0	8.4	8.0
Jun	9.0	8.5	8.0
Jul	9.0	8.6	8.1
Aug	8.9	8.6	8.1
Sep	8.8	8.5	8.0
Oct	8.6	8.4	7.9
Nov	8.5	8.3	7.6
Dec	8.3	8.2	

**LABOR FORCE** *(Seasonally adjusted)*



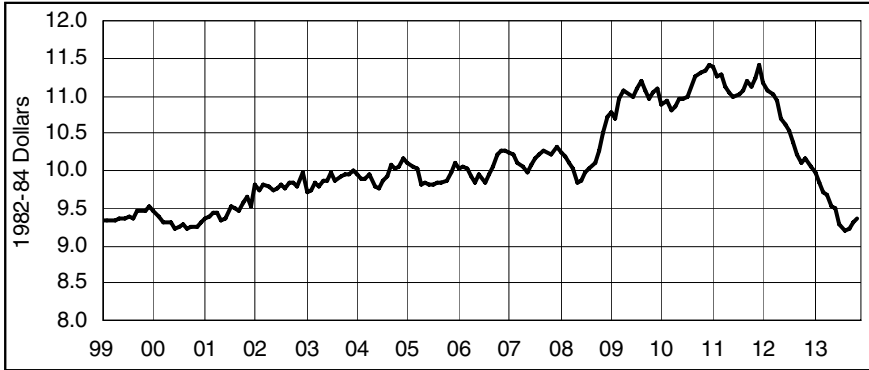
Month	2011	2012	2013
Jan	1,913.9	1,888.7	1,865.3
Feb	1,913.4	1,887.0	1,857.8
Mar	1,911.6	1,885.9	1,852.6
Apr	1,908.4	1,884.6	1,847.8
May	1,904.5	1,883.0	1,852.2
Jun	1,900.9	1,881.2	1,850.3
Jul	1,898.5	1,879.3	1,852.6
Aug	1,897.1	1,877.4	1,851.7
Sep	1,896.2	1,875.5	1,854.8
Oct	1,895.2	1,873.5	1,853.7
Nov	1,893.5	1,871.4	1,848.9
Dec	1,891.1	1,869.7	

**AVERAGE WEEKLY INITIAL CLAIMS** *(Seasonally adjusted)*



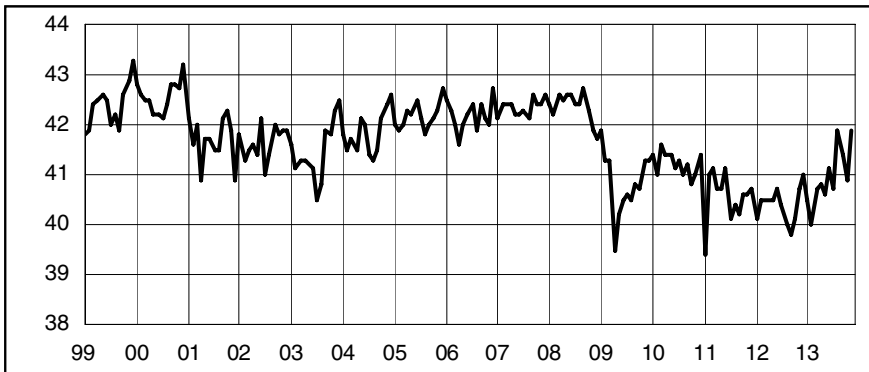
Month	2011	2012	2013
Jan	5,490	5,089	5,037
Feb	5,152	4,623	4,673
Mar	5,159	4,913	4,398
Apr	5,177	4,844	4,900
May	5,247	4,936	4,583
Jun	5,122	5,219	4,547
Jul	5,031	4,805	5,297
Aug	4,922	4,794	4,455
Sep	5,978	4,667	4,324
Oct	5,068	4,876	4,801
Nov	8,565	7,300	4,674
Dec	4,955	5,022	

## REAL AVG MANUFACTURING HOURLY EARNINGS *(Not seasonally adjusted)*



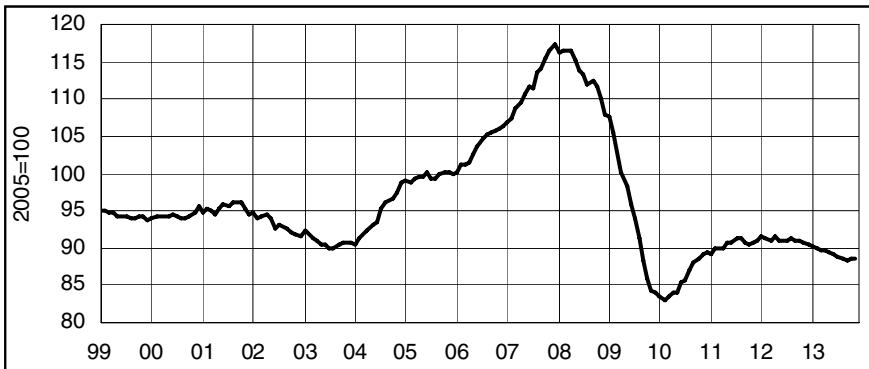
Month	2011	2012	2013
Jan	\$11.40	\$11.17	\$9.96
Feb	\$11.26	\$11.07	\$9.83
Mar	\$11.29	\$11.00	\$9.72
Apr	\$11.13	\$10.94	\$9.67
May	\$11.03	\$10.70	\$9.52
Jun	\$10.99	\$10.61	\$9.49
Jul	\$11.02	\$10.53	\$9.28
Aug	\$11.07	\$10.37	\$9.21
Sep	\$11.20	\$10.22	\$9.24
Oct	\$11.13	\$10.12	\$9.31
Nov	\$11.22	\$10.15	\$9.36
Dec	\$11.41	\$10.05	

## AVG MANUFACTURING WEEKLY HOURS *(Not seasonally adjusted)*



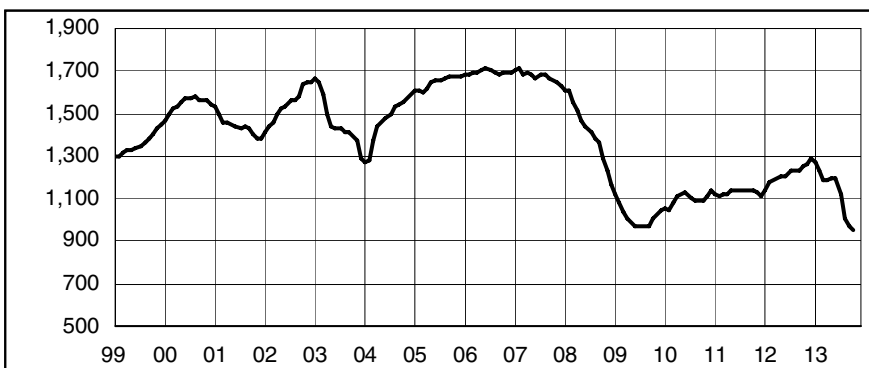
Month	2011	2012	2013
Jan	39.4	40.1	40.5
Feb	41.0	40.5	40.0
Mar	41.1	40.5	40.7
Apr	40.7	40.5	40.8
May	40.7	40.5	40.6
Jun	41.1	40.7	41.1
Jul	40.1	40.4	40.7
Aug	40.4	40.0	41.9
Sep	40.2	39.8	41.4
Oct	40.6	40.1	40.9
Nov	40.6	40.7	41.9
Dec	40.7	41.0	

## CT MANUFACTURING PRODUCTION INDEX *(NSA, 12 MMA)*



Month	2011	2012	2013
Jan	89.2	91.4	90.3
Feb	89.9	91.3	90.0
Mar	90.1	91.1	89.6
Apr	89.9	91.5	89.7
May	90.9	91.0	89.4
Jun	90.7	91.1	89.1
Jul	91.3	91.0	89.0
Aug	91.1	91.2	88.5
Sep	90.7	91.0	88.4
Oct	90.4	91.0	88.6
Nov	90.9	90.7	88.5
Dec	91.0	90.6	

## SECRETARY OF STATE'S NET BUSINESS STARTS *(NSA, 12 MMA)*



Month	2011	2012	2013
Jan	1,119	1,137	1,273
Feb	1,115	1,175	1,229
Mar	1,124	1,190	1,184
Apr	1,125	1,197	1,190
May	1,136	1,205	1,198
Jun	1,137	1,208	1,199
Jul	1,138	1,229	1,117
Aug	1,142	1,237	1,010
Sep	1,142	1,230	966
Oct	1,138	1,249	951
Nov	1,131	1,262	
Dec	1,115	1,285	

**CONNECTICUT***Not Seasonally Adjusted*

	NOV	NOV	CHANGE		OCT
	2013	2012	NO.	%	2013
<b>TOTAL NONFARM EMPLOYMENT</b> .....	<b>1,675,200</b>	<b>1,658,400</b>	<b>16,800</b>	<b>1.0</b>	<b>1,665,900</b>
<b>TOTAL PRIVATE</b> .....	<b>1,431,300</b>	<b>1,413,100</b>	<b>18,200</b>	<b>1.3</b>	<b>1,423,900</b>
<b>GOODS PRODUCING INDUSTRIES</b> .....	<b>218,800</b>	<b>216,300</b>	<b>2,500</b>	<b>1.2</b>	<b>220,300</b>
<b>CONSTRUCTION, NAT. RES. &amp; MINING</b> ....	<b>59,000</b>	<b>53,200</b>	<b>5,800</b>	<b>10.9</b>	<b>59,500</b>
<b>MANUFACTURING</b> .....	<b>159,800</b>	<b>163,100</b>	<b>-3,300</b>	<b>-2.0</b>	<b>160,800</b>
<b>Durable Goods</b> .....	<b>122,500</b>	<b>126,800</b>	<b>-4,300</b>	<b>-3.4</b>	<b>123,600</b>
Fabricated Metal.....	28,800	29,300	-500	-1.7	29,300
Machinery.....	14,300	14,500	-200	-1.4	14,300
Computer and Electronic Product.....	12,500	12,900	-400	-3.1	12,600
Transportation Equipment.....	41,300	41,600	-300	-0.7	41,300
Aerospace Product and Parts.....	29,100	29,600	-500	-1.7	28,900
<b>Non-Durable Goods</b> .....	<b>37,300</b>	<b>36,300</b>	<b>1,000</b>	<b>2.8</b>	<b>37,200</b>
Chemical.....	11,100	11,100	0	0.0	11,100
<b>SERVICE PROVIDING INDUSTRIES</b> .....	<b>1,456,400</b>	<b>1,442,100</b>	<b>14,300</b>	<b>1.0</b>	<b>1,445,600</b>
<b>TRADE, TRANSPORTATION, UTILITIES</b> ....	<b>308,300</b>	<b>301,600</b>	<b>6,700</b>	<b>2.2</b>	<b>299,300</b>
Wholesale Trade.....	63,000	62,900	100	0.2	62,900
Retail Trade.....	191,800	187,000	4,800	2.6	184,500
Motor Vehicle and Parts Dealers.....	20,300	20,100	200	1.0	20,200
Building Material.....	14,100	14,300	-200	-1.4	14,200
Food and Beverage Stores.....	45,600	43,900	1,700	3.9	44,700
General Merchandise Stores.....	30,900	30,400	500	1.6	28,700
Transportation, Warehousing, & Utilities....	53,500	51,700	1,800	3.5	51,900
Utilities.....	7,600	7,500	100	1.3	7,600
Transportation and Warehousing.....	45,900	44,200	1,700	3.8	44,300
<b>INFORMATION</b> .....	<b>30,500</b>	<b>31,000</b>	<b>-500</b>	<b>-1.6</b>	<b>30,500</b>
Telecommunications.....	9,100	9,300	-200	-2.2	8,900
<b>FINANCIAL ACTIVITIES</b> .....	<b>129,500</b>	<b>131,300</b>	<b>-1,800</b>	<b>-1.4</b>	<b>128,600</b>
Finance and Insurance.....	110,700	112,600	-1,900	-1.7	109,900
Credit Intermediation.....	25,400	25,400	0	0.0	25,100
Securities and Commodity Contracts.....	22,200	22,400	-200	-0.9	22,000
Insurance Carriers & Related Activities....	58,700	60,100	-1,400	-2.3	58,400
Real Estate and Rental and Leasing.....	18,800	18,700	100	0.5	18,700
<b>PROFESSIONAL &amp; BUSINESS SERVICES</b> ....	<b>208,300</b>	<b>205,200</b>	<b>3,100</b>	<b>1.5</b>	<b>208,300</b>
Professional, Scientific.....	87,300	88,200	-900	-1.0	87,400
Legal Services.....	13,400	12,700	700	5.5	13,200
Computer Systems Design.....	22,800	23,300	-500	-2.1	22,800
Management of Companies.....	30,900	30,400	500	1.6	30,800
Administrative and Support.....	90,100	86,600	3,500	4.0	90,100
Employment Services.....	30,300	29,400	900	3.1	30,700
<b>EDUCATION AND HEALTH SERVICES</b> .....	<b>331,800</b>	<b>322,400</b>	<b>9,400</b>	<b>2.9</b>	<b>329,700</b>
Educational Services.....	70,800	66,400	4,400	6.6	69,700
Health Care and Social Assistance.....	261,000	256,000	5,000	2.0	260,000
Hospitals.....	61,300	62,100	-800	-1.3	61,200
Nursing & Residential Care Facilities.....	63,700	62,200	1,500	2.4	63,400
Social Assistance.....	54,200	50,000	4,200	8.4	53,300
<b>LEISURE AND HOSPITALITY</b> .....	<b>143,900</b>	<b>142,800</b>	<b>1,100</b>	<b>0.8</b>	<b>146,600</b>
Arts, Entertainment, and Recreation.....	22,400	22,300	100	0.4	23,900
Accommodation and Food Services.....	121,500	120,500	1,000	0.8	122,700
Food Serv., Restaurants, Drinking Places.	110,500	109,000	1,500	1.4	111,100
<b>OTHER SERVICES</b> .....	<b>60,200</b>	<b>62,500</b>	<b>-2,300</b>	<b>-3.7</b>	<b>60,600</b>
<b>GOVERNMENT</b> .....	<b>243,900</b>	<b>245,300</b>	<b>-1,400</b>	<b>-0.6</b>	<b>242,000</b>
Federal Government.....	17,300	17,400	-100	-0.6	17,300
State Government.....	72,200	71,100	1,100	1.5	71,900
Local Government**.....	154,400	156,800	-2,400	-1.5	152,800

*Current month's data are preliminary. Prior months' data have been revised. All data are benchmarked to March 2012.*

*\*Total excludes workers idled due to labor-management disputes. \*\*Includes Indian tribal government employment.*

## BRIDGEPORT - STAMFORD LMA



*Not Seasonally Adjusted*

	NOV 2013	NOV 2012	CHANGE		OCT 2013
			NO.	%	
<b>TOTAL NONFARM EMPLOYMENT</b> .....	<b>414,600</b>	<b>406,600</b>	<b>8,000</b>	<b>2.0</b>	<b>412,300</b>
<b>TOTAL PRIVATE</b> .....	<b>366,800</b>	<b>360,300</b>	<b>6,500</b>	<b>1.8</b>	<b>364,800</b>
<b>GOODS PRODUCING INDUSTRIES</b> .....	<b>45,800</b>	<b>45,300</b>	<b>500</b>	<b>1.1</b>	<b>45,800</b>
<b>CONSTRUCTION, NAT. RES. &amp; MINING</b> ....	<b>12,700</b>	<b>11,800</b>	<b>900</b>	<b>7.6</b>	<b>12,700</b>
<b>MANUFACTURING</b> .....	<b>33,100</b>	<b>33,500</b>	<b>-400</b>	<b>-1.2</b>	<b>33,100</b>
Durable Goods.....	24,300	25,100	-800	-3.2	24,300
<b>SERVICE PROVIDING INDUSTRIES</b> .....	<b>368,800</b>	<b>361,300</b>	<b>7,500</b>	<b>2.1</b>	<b>366,500</b>
<b>TRADE, TRANSPORTATION, UTILITIES</b> ....	<b>72,300</b>	<b>70,900</b>	<b>1,400</b>	<b>2.0</b>	<b>70,600</b>
Wholesale Trade.....	13,600	13,600	0	0.0	13,600
Retail Trade.....	48,200	47,200	1,000	2.1	46,800
Transportation, Warehousing, & Utilities....	10,500	10,100	400	4.0	10,200
<b>INFORMATION</b> .....	<b>10,900</b>	<b>11,000</b>	<b>-100</b>	<b>-0.9</b>	<b>10,900</b>
<b>FINANCIAL ACTIVITIES</b> .....	<b>39,800</b>	<b>40,700</b>	<b>-900</b>	<b>-2.2</b>	<b>39,400</b>
Finance and Insurance.....	33,500	34,700	-1,200	-3.5	33,500
Credit Intermediation.....	9,000	8,800	200	2.3	8,800
Securities and Commodity Contracts.....	17,400	18,300	-900	-4.9	17,300
<b>PROFESSIONAL &amp; BUSINESS SERVICES</b>	<b>71,500</b>	<b>68,300</b>	<b>3,200</b>	<b>4.7</b>	<b>71,200</b>
Professional, Scientific.....	28,500	29,200	-700	-2.4	28,000
Administrative and Support.....	27,400	25,300	2,100	8.3	28,000
<b>EDUCATION AND HEALTH SERVICES</b> ....	<b>72,700</b>	<b>70,100</b>	<b>2,600</b>	<b>3.7</b>	<b>72,300</b>
Health Care and Social Assistance.....	60,500	58,400	2,100	3.6	60,300
<b>LEISURE AND HOSPITALITY</b> .....	<b>37,200</b>	<b>37,200</b>	<b>0</b>	<b>0.0</b>	<b>38,000</b>
Accommodation and Food Services.....	29,000	28,700	300	1.0	29,300
<b>OTHER SERVICES</b> .....	<b>16,600</b>	<b>16,800</b>	<b>-200</b>	<b>-1.2</b>	<b>16,600</b>
<b>GOVERNMENT</b> .....	<b>47,800</b>	<b>46,300</b>	<b>1,500</b>	<b>3.2</b>	<b>47,500</b>
Federal.....	2,500	2,600	-100	-3.8	2,600
State & Local.....	45,300	43,700	1,600	3.7	44,900

## DANBURY LMA



*Not Seasonally Adjusted*

	NOV 2013	NOV 2012	CHANGE		OCT 2013
			NO.	%	
<b>TOTAL NONFARM EMPLOYMENT</b> .....	<b>70,200</b>	<b>69,200</b>	<b>1,000</b>	<b>1.4</b>	<b>69,400</b>
<b>TOTAL PRIVATE</b> .....	<b>61,600</b>	<b>60,400</b>	<b>1,200</b>	<b>2.0</b>	<b>60,900</b>
<b>GOODS PRODUCING INDUSTRIES</b> .....	<b>12,400</b>	<b>11,900</b>	<b>500</b>	<b>4.2</b>	<b>12,500</b>
<b>SERVICE PROVIDING INDUSTRIES</b> .....	<b>57,800</b>	<b>57,300</b>	<b>500</b>	<b>0.9</b>	<b>56,900</b>
<b>TRADE, TRANSPORTATION, UTILITIES</b> ....	<b>16,700</b>	<b>15,800</b>	<b>900</b>	<b>5.7</b>	<b>16,500</b>
Retail Trade.....	12,700	12,400	300	2.4	12,300
<b>PROFESSIONAL &amp; BUSINESS SERVICES</b>	<b>8,000</b>	<b>7,900</b>	<b>100</b>	<b>1.3</b>	<b>7,900</b>
<b>LEISURE AND HOSPITALITY</b> .....	<b>6,300</b>	<b>6,200</b>	<b>100</b>	<b>1.6</b>	<b>6,300</b>
<b>GOVERNMENT</b> .....	<b>8,600</b>	<b>8,800</b>	<b>-200</b>	<b>-2.3</b>	<b>8,500</b>
Federal.....	600	600	0	0.0	600
State & Local.....	8,000	8,200	-200	-2.4	7,900

*Current month's data are preliminary. Prior months' data have been revised. All data are benchmarked to March 2012.*

*\*Total excludes workers idled due to labor-management disputes.*



**HARTFORD LMA***Not Seasonally Adjusted*

	NOV 2013	NOV 2012	CHANGE		OCT 2013
			NO.	%	
<b>TOTAL NONFARM EMPLOYMENT</b> .....	<b>559,000</b>	<b>550,600</b>	<b>8,400</b>	<b>1.5</b>	<b>556,700</b>
<b>TOTAL PRIVATE</b> .....	<b>469,100</b>	<b>462,900</b>	<b>6,200</b>	<b>1.3</b>	<b>466,900</b>
<b>GOODS PRODUCING INDUSTRIES</b> .....	<b>76,500</b>	<b>74,700</b>	<b>1,800</b>	<b>2.4</b>	<b>77,000</b>
<b>CONSTRUCTION, NAT. RES. &amp; MINING</b> ....	<b>19,800</b>	<b>17,900</b>	<b>1,900</b>	<b>10.6</b>	<b>20,200</b>
<b>MANUFACTURING</b> .....	<b>56,700</b>	<b>56,800</b>	<b>-100</b>	<b>-0.2</b>	<b>56,800</b>
Durable Goods.....	47,400	47,500	-100	-0.2	47,500
Non-Durable Goods.....	9,300	9,300	0	0.0	9,300
<b>SERVICE PROVIDING INDUSTRIES</b> .....	<b>482,500</b>	<b>475,900</b>	<b>6,600</b>	<b>1.4</b>	<b>479,700</b>
<b>TRADE, TRANSPORTATION, UTILITIES</b> ....	<b>90,600</b>	<b>88,300</b>	<b>2,300</b>	<b>2.6</b>	<b>87,800</b>
Wholesale Trade.....	18,000	18,000	0	0.0	18,000
Retail Trade.....	56,800	54,700	2,100	3.8	54,400
Transportation, Warehousing, & Utilities....	15,800	15,600	200	1.3	15,400
Transportation and Warehousing.....	13,000	12,900	100	0.8	12,600
<b>INFORMATION</b> .....	<b>10,700</b>	<b>10,900</b>	<b>-200</b>	<b>-1.8</b>	<b>10,700</b>
<b>FINANCIAL ACTIVITIES</b> .....	<b>60,300</b>	<b>60,000</b>	<b>300</b>	<b>0.5</b>	<b>60,200</b>
Depository Credit Institutions.....	6,500	6,500	0	0.0	6,500
Insurance Carriers & Related Activities....	39,700	40,500	-800	-2.0	39,700
<b>PROFESSIONAL &amp; BUSINESS SERVICES</b> ....	<b>64,800</b>	<b>64,400</b>	<b>400</b>	<b>0.6</b>	<b>64,800</b>
Professional, Scientific.....	29,900	29,700	200	0.7	29,700
Management of Companies.....	7,500	7,300	200	2.7	7,500
Administrative and Support.....	27,400	27,400	0	0.0	27,600
<b>EDUCATION AND HEALTH SERVICES</b> ....	<b>100,600</b>	<b>100,100</b>	<b>500</b>	<b>0.5</b>	<b>99,500</b>
Educational Services.....	14,800	14,500	300	2.1	14,600
Health Care and Social Assistance.....	85,800	85,600	200	0.2	84,900
Ambulatory Health Care.....	26,100	26,800	-700	-2.6	25,800
<b>LEISURE AND HOSPITALITY</b> .....	<b>45,000</b>	<b>43,400</b>	<b>1,600</b>	<b>3.7</b>	<b>45,900</b>
Accommodation and Food Services.....	38,500	37,800	700	1.9	38,600
<b>OTHER SERVICES</b> .....	<b>20,600</b>	<b>21,100</b>	<b>-500</b>	<b>-2.4</b>	<b>21,000</b>
<b>GOVERNMENT</b> .....	<b>89,900</b>	<b>87,700</b>	<b>2,200</b>	<b>2.5</b>	<b>89,800</b>
Federal.....	5,100	5,000	100	2.0	5,100
State & Local.....	84,800	82,700	2,100	2.5	84,700

**SEASONALLY ADJUSTED TOTAL NONFARM EMPLOYMENT***Seasonally Adjusted*

Labor Market Areas	NOV 2013	NOV 2012	CHANGE		OCT 2013
			NO.	%	
<b>BRIDGEPORT-STAMFORD LMA</b> .....	<b>412,200</b>	<b>404,100</b>	<b>8,100</b>	<b>2.0</b>	<b>410,700</b>
<b>DANBURY LMA</b> .....	<b>69,200</b>	<b>68,200</b>	<b>1,000</b>	<b>1.5</b>	<b>68,700</b>
<b>HARTFORD LMA</b> .....	<b>553,800</b>	<b>545,500</b>	<b>8,300</b>	<b>1.5</b>	<b>552,500</b>
<b>NEW HAVEN LMA</b> .....	<b>274,800</b>	<b>271,600</b>	<b>3,200</b>	<b>1.2</b>	<b>271,500</b>
<b>NORWICH-NEW LONDON LMA</b> .....	<b>126,600</b>	<b>127,500</b>	<b>-900</b>	<b>-0.7</b>	<b>125,700</b>
<b>WATERBURY LMA</b> .....	<b>63,000</b>	<b>63,200</b>	<b>-200</b>	<b>-0.3</b>	<b>62,800</b>

Current month's data are preliminary. Prior months' data have been revised. All data are benchmarked to March 2012.

\*Total excludes workers idled due to labor-management disputes.

## NEW HAVEN LMA



Not Seasonally Adjusted

	NOV 2013	NOV 2012	CHANGE		OCT 2013
			NO.	%	
<b>TOTAL NONFARM EMPLOYMENT</b> .....	<b>277,600</b>	<b>274,300</b>	<b>3,300</b>	<b>1.2</b>	<b>275,400</b>
<b>TOTAL PRIVATE</b> .....	<b>245,800</b>	<b>241,300</b>	<b>4,500</b>	<b>1.9</b>	<b>244,100</b>
<b>GOODS PRODUCING INDUSTRIES</b> .....	<b>34,200</b>	<b>34,700</b>	<b>-500</b>	<b>-1.4</b>	<b>34,300</b>
<b>CONSTRUCTION, NAT. RES. &amp; MINING</b> ....	<b>9,000</b>	<b>9,100</b>	<b>-100</b>	<b>-1.1</b>	<b>9,100</b>
<b>MANUFACTURING</b> .....	<b>25,200</b>	<b>25,600</b>	<b>-400</b>	<b>-1.6</b>	<b>25,200</b>
Durable Goods.....	18,500	19,000	-500	-2.6	18,500
<b>SERVICE PROVIDING INDUSTRIES</b> .....	<b>243,400</b>	<b>239,600</b>	<b>3,800</b>	<b>1.6</b>	<b>241,100</b>
<b>TRADE, TRANSPORTATION, UTILITIES</b> ....	<b>51,700</b>	<b>50,500</b>	<b>1,200</b>	<b>2.4</b>	<b>50,000</b>
Wholesale Trade.....	11,300	11,200	100	0.9	11,300
Retail Trade.....	30,800	29,900	900	3.0	29,100
Transportation, Warehousing, & Utilities....	9,600	9,400	200	2.1	9,600
<b>INFORMATION</b> .....	<b>4,200</b>	<b>4,300</b>	<b>-100</b>	<b>-2.3</b>	<b>4,200</b>
<b>FINANCIAL ACTIVITIES</b> .....	<b>12,000</b>	<b>12,100</b>	<b>-100</b>	<b>-0.8</b>	<b>11,900</b>
Finance and Insurance.....	8,400	8,600	-200	-2.3	8,400
<b>PROFESSIONAL &amp; BUSINESS SERVICES</b>	<b>27,500</b>	<b>27,300</b>	<b>200</b>	<b>0.7</b>	<b>27,800</b>
Administrative and Support.....	14,000	14,200	-200	-1.4	14,000
<b>EDUCATION AND HEALTH SERVICES</b> .....	<b>82,000</b>	<b>78,800</b>	<b>3,200</b>	<b>4.1</b>	<b>81,200</b>
Educational Services.....	33,200	30,200	3,000	9.9	32,600
Health Care and Social Assistance.....	48,800	48,600	200	0.4	48,600
<b>LEISURE AND HOSPITALITY</b> .....	<b>23,900</b>	<b>23,200</b>	<b>700</b>	<b>3.0</b>	<b>24,300</b>
Accommodation and Food Services.....	20,000	20,400	-400	-2.0	20,200
<b>OTHER SERVICES</b> .....	<b>10,300</b>	<b>10,400</b>	<b>-100</b>	<b>-1.0</b>	<b>10,400</b>
<b>GOVERNMENT</b> .....	<b>31,800</b>	<b>33,000</b>	<b>-1,200</b>	<b>-3.6</b>	<b>31,300</b>
Federal.....	4,800	4,900	-100	-2.0	4,800
State & Local.....	27,000	28,100	-1,100	-3.9	26,500

Current month's data are preliminary. Prior months' data have been revised. All data are benchmarked to March 2012.

\*Total excludes workers idled due to labor-management disputes. \*\*Value less than 50

## HELP WANTED ONLINE

### CT Online Labor Demand Rose 5,300 in November

The Conference Board's Help Wanted OnLine (HWOL) data reported that there were 70,200 advertisements for Connecticut-based jobs in November 2013, a 8.2 percent increase over the month and over the year. There were 3.79 advertised vacancies for every 100 persons in Connecticut's labor force, higher than a month ago and a year ago. Hartford's labor demand rate also rose to 4.65 from the month and the year. Nationally, it was 3.34 percent. Among the New England states, Massachusetts had the highest vacancy rate, while Maine had the lowest vacancy rate in November.

	NOV 2013	NOV 2012	OCT 2013
<i>(Seasonally adjusted)</i>			
<b>CT Vacancies (000s)</b>	70.2	64.9	64.9
<b>Hartford Vac. (000s)</b>	27.3	25.5	24.9
<b>Labor Demand Rate *</b>			
<b>Connecticut</b>	3.79	3.47	3.50
<b>Hartford</b>	4.65	4.30	4.24
<b>United States</b>	3.34	3.06	3.18
<b>Maine</b>	3.29	3.07	3.01
<b>Massachusetts</b>	4.40	4.02	4.28
<b>New Hampshire</b>	3.76	3.28	3.50
<b>Rhode Island</b>	3.45	3.06	3.24
<b>Vermont</b>	3.42	3.05	3.20

\* A percent of advertised vacancies per 100 persons in labor force  
Source: The Conference Board

The Conference Board Help Wanted OnLine® Data Series (HWOL) measures the number of new, first-time online jobs and jobs reposted from the previous month for over 16,000 Internet job boards, corporate boards and smaller job sites that serve niche markets and smaller geographic areas. Background information and technical notes and discussion of revisions to the series are available at: [www.conference-board.org/data/helpwantedonline.cfm](http://www.conference-board.org/data/helpwantedonline.cfm).

**NORWICH - NEW  
LONDON LMA***Not Seasonally Adjusted*

	NOV 2013	NOV 2012	CHANGE		OCT 2013
			NO.	%	
<b>TOTAL NONFARM EMPLOYMENT</b> .....	<b>126,700</b>	<b>127,700</b>	<b>-1,000</b>	<b>-0.8</b>	<b>126,400</b>
<b>TOTAL PRIVATE</b> .....	<b>92,300</b>	<b>92,800</b>	<b>-500</b>	<b>-0.5</b>	<b>92,100</b>
<b>GOODS PRODUCING INDUSTRIES</b> .....	<b>18,100</b>	<b>17,700</b>	<b>400</b>	<b>2.3</b>	<b>18,200</b>
<b>CONSTRUCTION, NAT. RES. &amp; MINING</b> .....	<b>3,900</b>	<b>3,600</b>	<b>300</b>	<b>8.3</b>	<b>4,000</b>
<b>MANUFACTURING</b> .....	<b>14,200</b>	<b>14,100</b>	<b>100</b>	<b>0.7</b>	<b>14,200</b>
Durable Goods.....	11,100	10,800	300	2.8	11,100
Non-Durable Goods.....	3,100	3,300	-200	-6.1	3,100
<b>SERVICE PROVIDING INDUSTRIES</b> .....	<b>108,600</b>	<b>110,000</b>	<b>-1,400</b>	<b>-1.3</b>	<b>108,200</b>
<b>TRADE, TRANSPORTATION, UTILITIES</b> .....	<b>22,800</b>	<b>23,200</b>	<b>-400</b>	<b>-1.7</b>	<b>22,400</b>
Wholesale Trade.....	2,700	2,600	100	3.8	2,700
Retail Trade.....	15,000	15,600	-600	-3.8	14,700
Transportation, Warehousing, & Utilities....	5,100	5,000	100	2.0	5,000
<b>INFORMATION</b> .....	<b>1,300</b>	<b>1,400</b>	<b>-100</b>	<b>-7.1</b>	<b>1,300</b>
<b>FINANCIAL ACTIVITIES</b> .....	<b>3,100</b>	<b>3,100</b>	<b>0</b>	<b>0.0</b>	<b>3,100</b>
<b>PROFESSIONAL &amp; BUSINESS SERVICES</b>	<b>8,900</b>	<b>8,800</b>	<b>100</b>	<b>1.1</b>	<b>8,900</b>
<b>EDUCATION AND HEALTH SERVICES</b> .....	<b>21,500</b>	<b>21,200</b>	<b>300</b>	<b>1.4</b>	<b>21,400</b>
Health Care and Social Assistance.....	18,700	18,400	300	1.6	18,600
<b>LEISURE AND HOSPITALITY</b> .....	<b>13,300</b>	<b>14,000</b>	<b>-700</b>	<b>-5.0</b>	<b>13,500</b>
Accommodation and Food Services.....	12,800	12,800	0	0.0	13,100
Food Serv., Restaurants, Drinking Places.	10,600	10,600	0	0.0	10,800
<b>OTHER SERVICES</b> .....	<b>3,300</b>	<b>3,400</b>	<b>-100</b>	<b>-2.9</b>	<b>3,300</b>
<b>GOVERNMENT</b> .....	<b>34,400</b>	<b>34,900</b>	<b>-500</b>	<b>-1.4</b>	<b>34,300</b>
Federal.....	2,600	2,600	0	0.0	2,600
State & Local**.....	31,800	32,300	-500	-1.5	31,700

**WATERBURY LMA***Not Seasonally Adjusted*

	NOV 2013	NOV 2012	CHANGE		OCT 2013
			NO.	%	
<b>TOTAL NONFARM EMPLOYMENT</b> .....	<b>63,600</b>	<b>63,800</b>	<b>-200</b>	<b>-0.3</b>	<b>63,300</b>
<b>TOTAL PRIVATE</b> .....	<b>53,500</b>	<b>53,600</b>	<b>-100</b>	<b>-0.2</b>	<b>53,200</b>
<b>GOODS PRODUCING INDUSTRIES</b> .....	<b>9,300</b>	<b>9,800</b>	<b>-500</b>	<b>-5.1</b>	<b>9,700</b>
<b>CONSTRUCTION, NAT. RES. &amp; MINING</b> .....	<b>2,200</b>	<b>2,200</b>	<b>0</b>	<b>0.0</b>	<b>2,300</b>
<b>MANUFACTURING</b> .....	<b>7,100</b>	<b>7,600</b>	<b>-500</b>	<b>-6.6</b>	<b>7,400</b>
<b>SERVICE PROVIDING INDUSTRIES</b> .....	<b>54,300</b>	<b>54,000</b>	<b>300</b>	<b>0.6</b>	<b>53,600</b>
<b>TRADE, TRANSPORTATION, UTILITIES</b> .....	<b>13,300</b>	<b>12,900</b>	<b>400</b>	<b>3.1</b>	<b>12,700</b>
Wholesale Trade.....	2,200	2,100	100	4.8	2,200
Retail Trade.....	9,300	9,000	300	3.3	8,800
Transportation, Warehousing, & Utilities....	1,800	1,800	0	0.0	1,700
<b>INFORMATION</b> .....	<b>600</b>	<b>600</b>	<b>0</b>	<b>0.0</b>	<b>600</b>
<b>FINANCIAL ACTIVITIES</b> .....	<b>2,000</b>	<b>2,000</b>	<b>0</b>	<b>0.0</b>	<b>2,000</b>
<b>PROFESSIONAL &amp; BUSINESS SERVICES</b>	<b>4,700</b>	<b>4,600</b>	<b>100</b>	<b>2.2</b>	<b>4,500</b>
<b>EDUCATION AND HEALTH SERVICES</b> .....	<b>16,500</b>	<b>16,500</b>	<b>0</b>	<b>0.0</b>	<b>16,500</b>
Health Care and Social Assistance.....	14,800	14,600	200	1.4	14,800
<b>LEISURE AND HOSPITALITY</b> .....	<b>4,700</b>	<b>4,800</b>	<b>-100</b>	<b>-2.1</b>	<b>4,800</b>
<b>OTHER SERVICES</b> .....	<b>2,400</b>	<b>2,400</b>	<b>0</b>	<b>0.0</b>	<b>2,400</b>
<b>GOVERNMENT</b> .....	<b>10,100</b>	<b>10,200</b>	<b>-100</b>	<b>-1.0</b>	<b>10,100</b>
Federal.....	400	400	0	0.0	400
State & Local.....	9,700	9,800	-100	-1.0	9,700

Current month's data are preliminary. Prior months' data have been revised. All data are benchmarked to March 2012

\*Total excludes workers idled due to labor-management disputes. \*\*Includes Indian tribal government employment.

## SMALLER LMAS



Not Seasonally Adjusted

	NOV	NOV	CHANGE		OCT
	2013	2012	NO.	%	2013
<b>TOTAL NONFARM EMPLOYMENT</b>					
ENFIELD LMA.....	45,500	45,600	-100	-0.2	44,900
TORRINGTON LMA.....	36,700	36,200	500	1.4	36,900
WILLIMANTIC - DANIELSON LMA.....	37,700	37,100	600	1.6	37,400

NOTE: More industry detail data is available for the State and its nine labor market areas at: <http://www.ctdol.state.ct.us/lmi/202/covered.htm>. The data published there differ from the data in the preceding tables in that they are developed from a near-universe count of Connecticut employment covered by the unemployment insurance (UI) program, while the data here is sample-based. The data drawn from the UI program does not contain estimates of employment not covered by unemployment insurance, and is lagged several months behind the current employment estimates presented here.

For further information on these nonfarm employment estimates contact Lincoln Dyer at (860) 263-6292.

## SPRINGFIELD, MA-CT NECTA\*\*

Not Seasonally Adjusted

	NOV	NOV	CHANGE		OCT
	2013	2012	NO.	%	2013
<b>TOTAL NONFARM EMPLOYMENT.....</b>	<b>286,100</b>	<b>285,200</b>	<b>900</b>	<b>0.3</b>	<b>286,500</b>
<b>TOTAL PRIVATE.....</b>	<b>237,700</b>	<b>236,200</b>	<b>1,500</b>	<b>0.6</b>	<b>238,000</b>
<b>GOODS PRODUCING INDUSTRIES.....</b>	<b>41,600</b>	<b>41,700</b>	<b>-100</b>	<b>-0.2</b>	<b>41,500</b>
CONSTRUCTION, NAT. RES. & MINING.....	10,600	10,400	200	1.9	10,900
MANUFACTURING.....	31,000	31,300	-300	-1.0	30,600
Durable Goods.....	21,000	21,000	0	0.0	21,000
Non-Durable Goods.....	10,000	10,300	-300	-2.9	9,600
<b>SERVICE PROVIDING INDUSTRIES.....</b>	<b>244,500</b>	<b>243,500</b>	<b>1,000</b>	<b>0.4</b>	<b>245,000</b>
TRADE, TRANSPORTATION, UTILITIES.....	59,400	58,300	1,100	1.9	58,800
Wholesale Trade.....	10,800	10,800	0	0.0	10,800
Retail Trade.....	36,000	35,200	800	2.3	35,400
Transportation, Warehousing, & Utilities....	12,600	12,300	300	2.4	12,600
INFORMATION.....	3,800	3,700	100	2.7	3,800
FINANCIAL ACTIVITIES.....	14,800	14,800	0	0.0	14,800
Finance and Insurance.....	11,800	11,900	-100	-0.8	11,800
Insurance Carriers & Related Activities....	7,400	7,400	0	0.0	7,400
PROFESSIONAL & BUSINESS SERVICES	24,900	24,400	500	2.0	24,900
EDUCATION AND HEALTH SERVICES.....	59,200	58,900	300	0.5	59,100
Educational Services.....	11,800	11,500	300	2.6	11,800
Health Care and Social Assistance.....	47,400	47,400	0	0.0	47,300
LEISURE AND HOSPITALITY.....	24,800	25,300	-500	-2.0	25,900
OTHER SERVICES.....	9,200	9,100	100	1.1	9,200
GOVERNMENT .....	48,400	49,000	-600	-1.2	48,500
Federal.....	5,700	5,900	-200	-3.4	5,800
State & Local.....	42,700	43,100	-400	-0.9	42,700

Current month's data are preliminary. Prior months' data have been revised. All data are benchmarked to March 2012.

\*Total excludes workers idled due to labor-management disputes.

\*\* New England City and Town Area

# LMA LABOR FORCE ESTIMATES

		NOV	NOV	CHANGE		OCT
<i>(Not seasonally adjusted)</i>		2013	2012	NO.	%	2013
	EMPLOYMENT STATUS					
<b>CONNECTICUT</b>	Civilian Labor Force	1,842,500	1,867,400	-24,900	-1.3	1,851,700
	Employed	1,715,900	1,721,600	-5,700	-0.3	1,712,500
	Unemployed	126,600	145,800	-19,200	-13.2	139,200
	Unemployment Rate	6.9	7.8	-0.9	---	7.5
<b>BRIDGEPORT - STAMFORD LMA</b>	Civilian Labor Force	469,600	473,400	-3,800	-0.8	470,800
	Employed	439,500	438,800	700	0.2	437,700
	Unemployed	30,100	34,600	-4,500	-13.0	33,100
	Unemployment Rate	6.4	7.3	-0.9	---	7.0
<b>DANBURY LMA</b>	Civilian Labor Force	91,400	92,300	-900	-1.0	91,200
	Employed	86,500	86,600	-100	-0.1	85,800
	Unemployed	4,900	5,700	-800	-14.0	5,400
	Unemployment Rate	5.3	6.2	-0.9	---	5.9
<b>ENFIELD LMA</b>	Civilian Labor Force	48,000	49,000	-1,000	-2.0	48,700
	Employed	44,800	45,300	-500	-1.1	45,000
	Unemployed	3,200	3,600	-400	-11.1	3,700
	Unemployment Rate	6.6	7.4	-0.8	---	7.5
<b>HARTFORD LMA</b>	Civilian Labor Force	585,400	592,100	-6,700	-1.1	589,000
	Employed	545,400	546,000	-600	-0.1	545,000
	Unemployed	40,000	46,100	-6,100	-13.2	44,000
	Unemployment Rate	6.8	7.8	-1.0	---	7.5
<b>NEW HAVEN LMA</b>	Civilian Labor Force	309,200	313,400	-4,200	-1.3	310,300
	Employed	287,000	288,000	-1,000	-0.3	286,000
	Unemployed	22,200	25,400	-3,200	-12.6	24,400
	Unemployment Rate	7.2	8.1	-0.9	---	7.9
<b>NORWICH - NEW LONDON LMA</b>	Civilian Labor Force	142,400	147,000	-4,600	-3.1	143,500
	Employed	132,000	135,000	-3,000	-2.2	132,200
	Unemployed	10,400	12,100	-1,700	-14.0	11,300
	Unemployment Rate	7.3	8.2	-0.9	---	7.9
<b>TORRINGTON LMA</b>	Civilian Labor Force	53,400	54,100	-700	-1.3	53,700
	Employed	50,100	50,300	-200	-0.4	50,200
	Unemployed	3,300	3,800	-500	-13.2	3,600
	Unemployment Rate	6.2	7.0	-0.8	---	6.6
<b>WATERBURY LMA</b>	Civilian Labor Force	98,300	100,600	-2,300	-2.3	98,800
	Employed	89,200	90,300	-1,100	-1.2	89,000
	Unemployed	9,100	10,300	-1,200	-11.7	9,800
	Unemployment Rate	9.2	10.2	-1.0	---	10.0
<b>WILLIMANTIC-DANIELSON LMA</b>	Civilian Labor Force	56,600	57,600	-1,000	-1.7	57,200
	Employed	52,300	52,500	-200	-0.4	52,400
	Unemployed	4,400	5,200	-800	-15.4	4,900
	Unemployment Rate	7.7	9.0	-1.3	---	8.5
<b>UNITED STATES</b>	Civilian Labor Force	155,046,000	154,953,000	93,000	0.1	154,918,000
	Employed	144,775,000	143,549,000	1,226,000	0.9	144,144,000
	Unemployed	10,271,000	11,404,000	-1,133,000	-9.9	10,773,000
	Unemployment Rate	6.6	7.4	-0.8	---	7.0

Current month's data are preliminary. Prior months' data have been revised. All data are benchmarked to March 2012.



(Not seasonally adjusted)	AVG WEEKLY EARNINGS				AVG WEEKLY HOURS				AVG HOURLY EARNINGS			
	NOV		CHG	OCT	NOV		CHG	OCT	NOV		CHG	OCT
	2013	2012	Y/Y	2013	2013	2012	Y/Y	2013	2013	2012	Y/Y	2013
<b>PRODUCTION WORKER</b>												
<b>MANUFACTURING</b>	\$898.76	\$936.51	-\$37.75	\$874.85	41.9	40.7	1.2	40.9	\$21.45	\$23.01	-\$1.56	\$21.39
<b>DURABLE GOODS</b>	911.21	974.95	-63.73	891.07	42.8	41.7	1.1	41.6	21.29	23.38	-2.09	21.42
<b>NON-DUR. GOODS</b>	858.64	811.88	46.76	828.96	39.1	37.5	1.6	38.9	21.96	21.65	0.31	21.31
<b>CONSTRUCTION</b>	1,008.22	1,095.51	-87.29	1,031.78	37.3	39.0	-1.7	38.2	27.03	28.09	-1.06	27.01
<b>ALL EMPLOYEES</b>												
<b>STATEWIDE</b>												
<b>TOTAL PRIVATE</b>	926.35	959.48	-33.13	934.16	33.6	34.0	-0.4	33.7	27.57	28.22	-0.65	27.72
<b>GOODS PRODUCING</b>	1,195.99	1,184.36	11.63	1,192.41	39.8	39.4	0.4	39.8	30.05	30.06	-0.01	29.96
Construction	1,115.22	1,143.84	-28.62	1,120.07	37.6	38.5	-0.9	37.7	29.66	29.71	-0.05	29.71
Manufacturing	1,217.25	1,199.00	18.26	1,211.60	40.4	39.9	0.5	40.4	30.13	30.05	0.08	29.99
<b>SERVICE PROVIDING</b>	878.15	918.06	-39.91	887.37	32.5	33.0	-0.5	32.6	27.02	27.82	-0.80	27.22
Trade, Transp., Utilities	778.89	882.18	-103.29	802.27	33.4	34.8	-1.4	33.4	23.32	25.35	-2.03	24.02
Financial Activities	1,604.44	1,545.22	59.22	1,611.62	37.2	37.1	0.1	37.1	43.13	41.65	1.48	43.44
Prof. & Business Serv.	1,049.84	1,047.00	2.84	1,063.65	34.5	34.9	-0.4	35.0	30.43	30.00	0.43	30.39
Education & Health Ser.	777.18	808.79	-31.61	780.62	31.3	31.0	0.3	31.2	24.83	26.09	-1.26	25.02
Leisure & Hospitality	390.13	389.90	0.23	395.15	25.7	25.5	0.2	26.1	15.18	15.29	-0.11	15.14
Other Services	685.67	623.10	62.57	677.33	31.7	31.0	0.7	31.3	21.63	20.10	1.53	21.64
<b>LABOR MARKET AREAS: TOTAL PRIVATE</b>												
Bridgeport-Stamford	1,046.10	1,101.07	-54.97	1,046.21	34.4	34.8	-0.4	34.7	30.41	31.64	-1.23	30.15
Danbury	919.85	925.85	-6.00	915.93	32.7	33.4	-0.7	32.7	28.13	27.72	0.41	28.01
Hartford	949.78	985.60	-35.82	967.09	34.4	35.0	-0.6	34.7	27.61	28.16	-0.55	27.87
New Haven	890.01	861.21	28.80	886.98	34.1	33.2	0.9	33.7	26.10	25.94	0.16	26.32
Norwich-New London	927.13	848.24	78.90	916.32	33.8	32.7	1.1	33.8	27.43	25.94	1.49	27.11
Waterbury	741.57	808.80	-67.23	757.02	32.9	33.7	-0.8	33.0	22.54	24.00	-1.46	22.94

Current month's data are preliminary. Prior months' data have been revised. All data are benchmarked to March 2012.

## BUSINESS AND EMPLOYMENT CHANGES ANNOUNCED IN THE NEWS MEDIA

- In November 2013, Denny's opened a new restaurant in Hartford and hired 90 workers. AT&T added 30 employees as it expands its workforce statewide. Pitney Bowes will add 200 jobs in Stamford over the next five years. Amazon announced it will open a warehouse in Windsor, adding 300 jobs.
- In November 2013, Electric Boat of Groton announced plans to adjust workforce requirements in January 2014, resulting in a loss of 115 jobs. Hartford HealthCare will eliminate 179 jobs statewide.

*Business & Employment Changes Announced in the News Media* lists start-ups, expansions, staff reductions, and layoffs reported by the media, both current and future. The report provides company name, the number of workers involved, date of the action, the principal product or service of the company, a brief synopsis of the action, and the source and date of the media article. This publication is available in both HTML and PDF formats at the Connecticut Department of Labor Web site, <http://www.ctdol.state.ct.us/lmi/busemp.htm>.

(By Place of Residence - Not Seasonally Adjusted)

**NOVEMBER 2013**

LMA/TOWNS	LABOR FORCE	EMPLOYED	UNEMPLOYED	%	LMA/TOWNS	LABOR FORCE	EMPLOYED	UNEMPLOYED	%
<b>BRIDGEPORT-STAMFORD</b>					<b>HARTFORD cont...</b>				
	<b>469,598</b>	<b>439,482</b>	<b>30,116</b>	<b>6.4</b>	Canton	5,760	5,472	288	5.0
Ansonia	9,986	9,202	784	7.9	Colchester	8,928	8,413	515	5.8
Bridgeport	64,935	58,144	6,791	10.5	Columbia	3,093	2,900	193	6.2
Darien	9,144	8,720	424	4.6	Coventry	6,998	6,589	409	5.8
Derby	6,920	6,387	533	7.7	Cromwell	7,927	7,463	464	5.9
Easton	3,702	3,514	188	5.1	East Granby	2,912	2,757	155	5.3
Fairfield	28,632	26,990	1,642	5.7	East Haddam	5,205	4,941	264	5.1
Greenwich	29,186	27,790	1,396	4.8	East Hampton	7,093	6,678	415	5.9
Milford	29,565	27,754	1,811	6.1	East Hartford	26,099	23,944	2,155	8.3
Monroe	10,330	9,807	523	5.1	Ellington	9,242	8,755	487	5.3
New Canaan	8,679	8,246	433	5.0	Farmington	12,830	12,143	687	5.4
Newtown	14,327	13,601	726	5.1	Glastonbury	18,538	17,627	911	4.9
Norwalk	48,580	45,631	2,949	6.1	Granby	6,221	5,920	301	4.8
Oxford	7,218	6,858	360	5.0	Haddam	5,105	4,866	239	4.7
Redding	4,718	4,514	204	4.3	Hartford	49,139	42,702	6,437	13.1
Ridgefield	11,778	11,194	584	5.0	Hartland	1,195	1,135	60	5.0
Seymour	9,159	8,529	630	6.9	Harwinton	3,102	2,937	165	5.3
Shelton	22,230	20,909	1,321	5.9	Hebron	5,647	5,344	303	5.4
Southbury	8,926	8,403	523	5.9	Lebanon	4,204	3,959	245	5.8
Stamford	66,926	63,107	3,819	5.7	Manchester	32,821	30,707	2,114	6.4
Stratford	26,616	24,619	1,997	7.5	Mansfield	13,767	12,932	835	6.1
Trumbull	18,012	17,010	1,002	5.6	Marlborough	3,607	3,409	198	5.5
Weston	4,773	4,567	206	4.3	Middlefield	2,425	2,282	143	5.9
Westport	12,364	11,747	617	5.0	Middletown	26,253	24,469	1,784	6.8
Wilton	8,289	7,849	440	5.3	New Britain	35,102	31,882	3,220	9.2
Woodbridge	4,605	4,390	215	4.7	New Hartford	3,832	3,604	228	5.9
<b>DANBURY</b>	<b>91,357</b>	<b>86,474</b>	<b>4,883</b>	<b>5.3</b>	Newington	16,785	15,812	973	5.8
Bethel	10,847	10,240	607	5.6	Plainville	10,101	9,447	654	6.5
Bridgewater	942	887	55	5.8	Plymouth	6,797	6,243	554	8.2
Brookfield	9,116	8,623	493	5.4	Portland	5,220	4,929	291	5.6
Danbury	45,303	42,905	2,398	5.3	Rocky Hill	10,980	10,404	576	5.2
New Fairfield	7,424	7,038	386	5.2	Simsbury	11,768	11,180	588	5.0
New Milford	15,854	15,000	854	5.4	Southington	24,137	22,782	1,355	5.6
Sherman	1,872	1,782	90	4.8	South Windsor	14,371	13,569	802	5.6
<b>ENFIELD</b>	<b>47,996</b>	<b>44,820</b>	<b>3,176</b>	<b>6.6</b>	Stafford	6,811	6,390	421	6.2
East Windsor	6,295	5,857	438	7.0	Thomaston	4,498	4,200	298	6.6
Enfield	22,657	21,126	1,531	6.8	Tolland	8,371	7,975	396	4.7
Somers	4,721	4,433	288	6.1	Union	523	500	23	4.4
Suffield	7,472	7,045	427	5.7	Vernon	16,772	15,652	1,120	6.7
Windsor Locks	6,852	6,359	493	7.2	West Hartford	29,723	28,072	1,651	5.6
<b>HARTFORD</b>	<b>585,366</b>	<b>545,415</b>	<b>39,951</b>	<b>6.8</b>	Wethersfield	13,333	12,556	777	5.8
Andover	2,007	1,891	116	5.8	Willington	3,704	3,532	172	4.6
Ashford	2,502	2,352	150	6.0	Windsor	16,076	14,973	1,103	6.9
Avon	9,396	8,976	420	4.5					
Barkhamsted	2,213	2,093	120	5.4					
Berlin	10,919	10,325	594	5.4					
Bloomfield	9,904	9,090	814	8.2					
Bolton	2,890	2,734	156	5.4					
Bristol	33,184	30,848	2,336	7.0					
Burlington	5,336	5,060	276	5.2					

All Labor Market Areas (LMAs) in Connecticut except three are federally-designated areas for developing labor statistics. For the sake of simplicity, the federal Bridgeport-Stamford-Norwalk NECTA is referred to in Connecticut DOL publications as the 'Bridgeport-Stamford LMA', and the Hartford-West Hartford-East Hartford NECTA is referred to as the 'Hartford LMA'. The Bureau of Labor Statistics has identified 17 towns in the northwest part of the State as a separate area for reporting labor force data. For the convenience of our data users, these towns are included in the Torrington LMA. For the same purpose, five towns which are part of the Springfield, MA area are published as the 'Enfield LMA'. Similarly the towns of Putnam, Thompson and Woodstock (part of the Worcester, MA area), plus four towns estimated separately are included in the Willimantic-Danielson LMA.

**LABOR FORCE CONCEPTS**

The **civilian labor force** comprises all state residents age 16 years and older classified as employed or unemployed in accordance with criteria described below. Excluded are members of the military and persons in institutions (correctional and mental health, for example).

The **employed** are all persons who did any work as paid employees or in their own business during the survey week, or who have worked 15 hours or more as unpaid workers in an enterprise operated by a family member. Persons temporarily absent from a job because of illness, bad weather, strike or for personal reasons are also counted as employed whether they were paid by their employer or were seeking other jobs.

The **unemployed** are all persons who did not work, but were available for work during the survey week (except for temporary illness) and made specific efforts to find a job in the prior four weeks. Persons waiting to be recalled to a job from which they had been laid off need not be looking for work to be classified as unemployed.

# LABOR FORCE ESTIMATES BY TOWN

Town

(By Place of Residence - Not Seasonally Adjusted)

## NOVEMBER 2013

LMA/TOWNS	LABOR FORCE	EMPLOYED	UNEMPLOYED	%	LMA/TOWNS	LABOR FORCE	EMPLOYED	UNEMPLOYED	%
<b>NEW HAVEN</b>	<b>309,179</b>	<b>287,025</b>	<b>22,154</b>	<b>7.2</b>	<b>TORRINGTON</b>	<b>53,419</b>	<b>50,122</b>	<b>3,297</b>	<b>6.2</b>
Bethany	3,047	2,891	156	5.1	Bethlehem	1,985	1,887	98	4.9
Branford	16,260	15,341	919	5.7	Canaan	654	631	23	3.5
Cheshire	14,408	13,590	818	5.7	Colebrook	784	753	31	4.0
Chester	2,319	2,200	119	5.1	Cornwall	775	741	34	4.4
Clinton	7,608	7,150	458	6.0	Goshen	1,485	1,417	68	4.6
Deep River	2,490	2,350	140	5.6	Kent	1,563	1,493	70	4.5
Durham	4,188	3,977	211	5.0	Litchfield	4,188	3,960	228	5.4
East Haven	16,101	14,895	1,206	7.5	Morris	1,277	1,206	71	5.6
Essex	3,635	3,462	173	4.8	Norfolk	959	901	58	6.0
Guilford	12,680	12,015	665	5.2	North Canaan	1,660	1,570	90	5.4
Hamden	31,720	29,573	2,147	6.8	Roxbury	1,303	1,246	57	4.4
Killingworth	3,600	3,387	213	5.9	Salisbury	1,771	1,707	64	3.6
Madison	9,516	9,068	448	4.7	Sharon	1,392	1,337	55	4.0
Meriden	31,865	29,149	2,716	8.5	Torrington	19,336	17,881	1,455	7.5
New Haven	57,146	51,432	5,714	10.0	Warren	769	731	38	4.9
North Branford	8,135	7,675	460	5.7	Washington	1,849	1,751	98	5.3
North Haven	12,885	12,109	776	6.0	Winchester	6,143	5,674	469	7.6
Old Saybrook	5,204	4,929	275	5.3	Woodbury	5,525	5,236	289	5.2
Orange	7,148	6,761	387	5.4					
Wallingford	24,956	23,359	1,597	6.4	<b>WATERBURY</b>	<b>98,261</b>	<b>89,203</b>	<b>9,058</b>	<b>9.2</b>
West Haven	30,503	28,149	2,354	7.7	Beacon Falls	3,273	3,076	197	6.0
Westbrook	3,766	3,563	203	5.4	Middlebury	3,864	3,646	218	5.6
					Naugatuck	16,290	14,965	1,325	8.1
<b>*NORWICH-NEW LONDON</b>	<b>130,652</b>	<b>121,098</b>	<b>9,554</b>	<b>7.3</b>	Prospect	5,039	4,740	299	5.9
Bozrah	1,461	1,359	102	7.0	Waterbury	49,359	43,689	5,670	11.5
Canterbury	2,961	2,758	203	6.9	Watertown	11,721	10,953	768	6.6
East Lyme	9,144	8,609	535	5.9	Wolcott	8,715	8,134	581	6.7
Franklin	1,108	1,030	78	7.0					
Griswold	7,005	6,445	560	8.0	<b>WILLIMANTIC-DANIELSON</b>	<b>56,640</b>	<b>52,264</b>	<b>4,376</b>	<b>7.7</b>
Groton	17,879	16,537	1,342	7.5	Brooklyn	3,916	3,647	269	6.9
Ledyard	7,856	7,342	514	6.5	Chaplin	1,307	1,227	80	6.1
Lisbon	2,431	2,275	156	6.4	Eastford	961	908	53	5.5
Lyme	1,214	1,147	67	5.5	Hampton	1,064	991	73	6.9
Montville	10,012	9,313	699	7.0	Killingly	9,108	8,312	796	8.7
New London	13,479	12,175	1,304	9.7	Plainfield	8,214	7,463	751	9.1
No. Stonington	3,087	2,872	215	7.0	Pomfret	2,243	2,109	134	6.0
Norwich	21,126	19,439	1,687	8.0	Putnam	5,212	4,854	358	6.9
Old Lyme	3,950	3,734	216	5.5	Scotland	984	942	42	4.3
Preston	2,557	2,377	180	7.0	Sterling	2,106	1,937	169	8.0
Salem	2,436	2,283	153	6.3	Thompson	5,289	4,939	350	6.6
Sprague	1,691	1,522	169	10.0	Windham	11,855	10,765	1,090	9.2
Stonington	9,791	9,220	571	5.8	Woodstock	4,382	4,171	211	4.8
Voluntown	1,489	1,370	119	8.0					
Waterford	9,976	9,293	683	6.8					

\*Connecticut portion only. For whole NECTA, including Rhode Island town, see below.

NORWICH-NEW LONDON				
	<b>142,423</b>	<b>131,977</b>	<b>10,446</b>	<b>7.3</b>
Westerly, RI	11,771	10,879	892	7.6

Labor Force estimates are prepared following statistical procedures developed by the U.S. Department of Labor, Bureau of Labor Statistics.

Not Seasonally Adjusted:				
CONNECTICUT	<b>1,842,500</b>	<b>1,715,900</b>	<b>126,600</b>	<b>6.9</b>
UNITED STATES	<b>155,046,000</b>	<b>144,775,000</b>	<b>10,271,000</b>	<b>6.6</b>
Seasonally Adjusted:				
CONNECTICUT	<b>1,848,900</b>	<b>1,708,600</b>	<b>140,300</b>	<b>7.6</b>
UNITED STATES	<b>155,294,000</b>	<b>144,386,000</b>	<b>10,907,000</b>	<b>7.0</b>

### LABOR FORCE CONCEPTS (Continued)

The **unemployment rate** represents the number unemployed as a percent of the civilian labor force.

With the exception of those persons temporarily absent from a job or waiting to be recalled to one, persons with no job and who are not actively looking for one are counted as "not in the labor force".

Over the course of a year, the size of the labor force and the levels of employment undergo fluctuations due to such seasonal events as changes in weather, reduced or expanded production, harvests, major holidays and the opening and closing of schools. Because these seasonal events follow a regular pattern each year, their influence on statistical trends can be eliminated by adjusting the monthly statistics. **Seasonal Adjustment** makes it easier to observe cyclical and other nonseasonal developments.

TOWN	NOV 2013	YR TO DATE 2013	2012	TOWN	NOV 2013	YR TO DATE 2013	2012	TOWN	NOV 2013	YR TO DATE 2013	2012
Andover	0	5	7	Griswold	na	na	na	Preston	0	10	7
Ansonia	0	1	3	Groton	4	47	13	Prospect	na	na	na
Ashford	0	3	3	Guilford	2	35	28	Putnam	0	3	2
Avon	3	38	33	Haddam	1	5	14	Redding	na	na	na
Barkhamsted	na	na	na	Hamden	0	2	3	Ridgefield	4	19	34
Beacon Falls	na	na	na	Hampton	1	3	8	Rocky Hill	2	97	50
Berlin	6	86	100	Hartford	2	25	26	Roxbury	na	na	na
Bethany	na	na	na	Hartland	na	na	na	Salem	0	5	7
Bethel	6	49	40	Harwinton	0	1	8	Salisbury	na	na	na
Bethlehem	na	na	na	Hebron	na	na	na	Scotland	0	1	0
Bloomfield	na	na	na	Kent	0	2	2	Seymour	1	14	23
Bolton	1	13	6	Killingly	2	19	16	Sharon	1	2	3
Bozrah	0	3	2	Killingworth	na	na	na	Shelton	9	32	291
Branford	na	na	na	Lebanon	0	5	1	Sherman	na	na	na
Bridgeport	3	161	155	Ledyard	5	41	23	Simsbury	1	108	94
Bridgewater	na	na	na	Lisbon	1	6	5	Somers	2	9	11
Bristol	6	88	28	Litchfield	na	na	na	South Windsor	1	19	14
Brookfield	na	na	na	Lyme	1	3	2	Southbury	7	38	13
Brooklyn	1	11	24	Madison	1	17	18	Southington	8	97	80
Burlington	2	34	22	Manchester	2	20	16	Sprague	0	7	1
Canaan	0	0	0	Mansfield	1	12	7	Stafford	na	na	na
Canterbury	0	10	4	Marlborough	1	8	4	Stamford	8	241	502
Canton	1	11	8	Meriden	0	15	14	Sterling	na	na	na
Chaplin	0	0	0	Middlebury	na	na	na	Stonington	3	29	25
Cheshire	1	43	22	Middlefield	2	11	9	Stratford	1	266	6
Chester	na	na	na	Middletown	24	48	17	Suffield	2	27	23
Clinton	0	11	15	Milford	13	168	129	Thomaston	na	na	na
Colchester	0	31	24	Monroe	0	6	5	Thompson	na	na	na
Colebrook	0	1	1	Montville	1	10	10	Tolland	1	9	8
Columbia	1	9	8	Morris	0	0	0	Torrington	0	3	4
Cornwall	0	1	14	Naugatuck	0	15	10	Trumbull	2	10	7
Coventry	5	26	23	New Britain	na	na	na	Union	0	2	4
Cromwell	2	28	38	New Canaan	3	43	27	Vernon	0	32	94
Danbury	40	296	388	New Fairfield	na	na	na	Voluntown	0	1	2
Darien	na	na	na	New Hartford	0	6	3	Wallingford	0	26	37
Deep River	0	7	2	New Haven	0	37	20	Warren	1	1	1
Derby	na	na	na	New London	3	39	30	Washington	na	na	na
Durham	0	7	5	New Milford	0	17	17	Waterbury	2	33	16
East Granby	0	7	11	Newington	0	9	75	Waterford	0	14	12
East Haddam	0	14	10	Newtown	1	14	11	Watertown	1	24	15
East Hampton	4	17	7	Norfolk	0	0	1	West Hartford	6	57	67
East Hartford	na	na	na	North Branford	na	na	na	West Haven	na	na	na
East Haven	2	19	10	North Canaan	0	0	1	Westbrook	1	13	8
East Lyme	1	35	37	North Haven	2	22	13	Weston	na	na	na
East Windsor	2	18	18	North Stonington	0	4	3	Westport	12	94	85
Eastford	0	4	1	Norwalk	0	76	51	Wethersfield	na	na	na
Easton	0	6	2	Norwich	0	6	8	Willington	0	2	2
Ellington	2	38	42	Old Lyme	na	na	na	Wilton	na	na	na
Enfield	na	na	na	Old Saybrook	2	21	13	Winchester	3	27	4
Essex	0	9	4	Orange	na	na	na	Windham	0	4	7
Fairfield	9	147	47	Oxford	3	23	30	Windsor	na	na	na
Farmington	4	45	44	Plainfield	0	14	9	Windsor Locks	na	na	na
Franklin	0	1	0	Plainville	0	11	12	Wolcott	1	16	16
Glastonbury	1	31	37	Plymouth	1	5	7	Woodbridge	na	na	na
Goshen	0	3	3	Pomfret	0	1	1	Woodbury	1	8	5
Granby	0	9	4	Portland	1	9	5	Woodstock	1	8	0
Greenwich	7	76	59								

For further information on the housing permit data, contact Kolie Sun of DECD at (860) 270-8167.



## **BUSINESS STARTS AND TERMINATIONS**

Registrations and terminations of business entities as recorded with the Secretary of the State and the Connecticut Department of Labor (DOL) are an indication of new business formation and activity. DOL business starts include new employers which have become liable for unemployment insurance taxes during the quarter, as well as new establishments opened by existing employers. DOL business terminations are those accounts discontinued due to inactivity (no employees) or business closure, and accounts for individual business establishments that are closed by still active employers. The Secretary of the State registrations include limited liability companies, limited liability partnerships, and foreign-owned (out-of-state) and domestic-owned (in-state) corporations.

## **CONSUMER PRICE INDEX**

The Consumer Price Index (CPI), computed and published by the U.S. Bureau of Labor Statistics, is a measure of the average change in prices over time in a fixed market basket of goods and services. It is based on prices of food, clothing, shelter, fuels, transportation fares, charges for doctors' and dentists' services, drugs and other goods and services that people buy for their day-to-day living. The Northeast region is comprised of the New England states, New York, New Jersey and Pennsylvania.

## **EMPLOYMENT COST INDEX**

The Employment Cost Index (ECI) covers both wages and salaries and employer costs for employee benefits for all occupations and establishments in both the private nonfarm sector and state and local government. The ECI measures employers' labor costs free from the influences of employment shifts among industries and occupations. The base period for all data is June 1989 when the ECI is 100.

## **HOURS AND EARNINGS ESTIMATES**

Production worker earnings and hours estimates include full- and part-time employees working within manufacturing industries. Hours worked and earnings data are computed based on payroll figures for the week including the 12th of the month. Average hourly earnings are affected by such factors as premium pay for overtime and shift differential as well as changes in basic hourly and incentive rates of pay. Average weekly earnings are the product of weekly hours worked and hourly earnings. These data are developed in cooperation with the U.S. Department of Labor, Bureau of Labor Statistics.

## **INDIAN GAMING DATA**

Indian Gaming Payments are amounts received by the State as a result of the slot compact with the two Federally recognized tribes in Connecticut, which calls for 25 percent of net slot receipts to be remitted to the State. Indian Gaming Slots are the total net revenues from slot machines only received by the two Federally recognized Indian tribes.

## **INITIAL CLAIMS**

Average weekly initial claims are calculated by dividing the total number of new claims for unemployment insurance received in the month by the number of weeks in the month. A minor change in methodology took effect with data published in the March 1997 issue of the DIGEST. Data have been revised back to January 1980.

## **INSURED UNEMPLOYMENT RATE**

Primarily a measure of unemployment insurance program activity, the insured unemployment rate is the 13-week average of the number of people claiming unemployment benefits divided by the number of workers covered by the unemployment insurance system.

## **LABOR FORCE ESTIMATES**

Labor force estimates are a measure of the work status of people who live in Connecticut. Prepared under the direction of the U.S. Bureau of Labor Statistics, the statewide estimates are the product of a signal-plus noise model, which uses results from the Current Population Survey (CPS), a monthly survey of Connecticut households, counts of claimants for unemployment benefits, and establishment employment estimates. Beginning with the publication of January 2005 data, an improved methodology is being used to develop labor force estimates, by which monthly state model-based employment and unemployment estimates are controlled to add to the national CPS levels. This will ensure that national economic events are reflected in the state estimates, and it will significantly reduce end-of-year revisions. (For more information, please see the Connecticut Economic Digest, December 2004 issue.) Labor force data, reflecting persons employed by place of residence, are not directly comparable to the place-of-work industry employment series. In the labor force estimates, workers involved in labor disputes are counted as employed. The labor force data also includes agricultural workers, unpaid family workers, domestics and the self-employed. Because of these conceptual differences, total labor force employment is almost always different from nonfarm wage and salary employment.

## **LABOR MARKET AREAS**

All Labor Market Areas (LMAs) in Connecticut except three are federally-designated areas for developing labor statistics. For the sake of simplicity, the federal Bridgeport-Norwalk-Stamford Metropolitan Statistical Area (MSA) is referred to in Connecticut Department of Labor publications as the Bridgeport-Stamford LMA, and the Hartford-West Hartford-East Hartford MSA is called the Hartford LMA. The Bureau of Labor Statistics has identified the 17 towns in the north-western part of the state as a separate area for reporting labor force data. For the convenience of our data users, data for these towns are included in the Torrington LMA. For the same purpose, data for the towns of East Windsor, Enfield, Somers, Suffield and Windsor Locks, which are officially part of the Springfield MSA, are published as the Enfield LMA. Similarly, the towns of Putnam, Thompson and Woodstock - part of the Worcester MSA - are included in the Willimantic-Danielson LMA. Also, data for Westerly, Rhode Island are included in the Norwich-New London LMA. Industry employment and labor force data estimates contained in Connecticut Department of Labor publications are prepared following the same statistical procedures developed by the U.S. Department of Labor, Bureau of Labor Statistics, whether for federally designated or state-determined areas.

## **NONFARM EMPLOYMENT ESTIMATES**

Nonfarm employment estimates are derived from a survey of businesses to measure *jobs* by industry. The estimates include all full- and part-time wage and salary employees who worked during or received pay for the pay period which includes the 12th of the month. Excluded from these estimates are proprietors, self-employed workers, private household employees and unpaid family workers. In some cases, due to space constraints, all industry estimates are not shown. Call (860) 263-6275 for a more comprehensive breakout of nonfarm employment estimates. These data are developed in cooperation with the U.S. Department of Labor, Bureau of Labor Statistics.

## **UI COVERED WAGES**

UI covered wages is the total amount paid to those employees who are covered under the Connecticut's Unemployment Insurance (UI) law for services performed during the quarter. The fluctuations in the 1992-93 period reflect the effect of the changes in the tax law and the massive restructuring in the state's economy.



# ECONOMIC INDICATORS AT A GLANCE

(Percent change from prior year; see pages 4-8 for reference months or quarters)

<b>Leading General Drift Indicator</b> ..... +3.7	<b>Business Activity</b>	<b>Tourism and Travel</b>
<b>Coincident General Drift Indicator</b> +0.1	New Housing Permits ..... -21.4	Info Center Visitors ..... +65.5
<b>Farmington Bank Bus. Barometer</b> +2.3	Electricity Sales ..... -0.9	Attraction Visitors ..... +1.8
<b>Phil. Fed's CT Coincident Index</b> .... +3.6	Construction Contracts Index ..... +22.8	Air Passenger Count ..... +3.4
<b>Total Nonfarm Employment</b> ..... +1.0	New Auto Registrations ..... +1.6	Indian Gaming Slots ..... +2.2
<b>Unemployment Rate</b> ..... -0.7*	Air Cargo Tons ..... -15.3	Travel and Tourism Index ..... +1.9
Labor Force ..... -1.2	Exports ..... +8.5	
Employed ..... -0.4	S&P 500: Monthly Close ..... +27.5	<b>Employment Cost Index (U.S.)</b>
Unemployed ..... -9.8		Total ..... +1.9
<b>Average Weekly Initial Claims</b> ..... -36.0	<b>Business Starts</b>	Wages & Salaries ..... +1.8
<b>Avg Insured Unempl. Rate</b> ..... -0.96*	Secretary of the State ..... +5.3	Benefit Costs ..... +2.0
<b>U-6 Rate</b> ..... -0.6*	Dept. of Labor ..... -16.9	
<b>Prod. Worker Avg Wkly Hrs, Mfg</b> .... +2.9	<b>Business Terminations</b>	<b>Consumer Prices</b>
<b>PW Avg Hourly Earnings, Mfg</b> ..... -6.8	Secretary of the State ..... +32.8	U.S. City Average ..... +1.2
<b>PW Avg Weekly Earnings, Mfg</b> ..... -4.0	Dept. of Labor ..... -17.9	Northeast Region ..... +1.0
<b>CT Mfg. Production Index</b> ..... -1.8		NY-NJ-Long Island ..... +1.2
Production Worker Hours ..... -3.6	<b>State Revenues</b> ..... +2.7	Boston-Brockton-Nashua ..... +0.9
Industrial Electricity Sales ..... -3.9	Corporate Tax ..... +263.1	
<b>Personal Income</b> ..... +2.7	Personal Income Tax ..... +2.7	<b>Interest Rates</b>
<b>UI Covered Wages</b> ..... +2.4	Real Estate Conveyance Tax ..... +13.2	Prime ..... 0.00*
	Sales & Use Tax ..... -15.7	Conventional Mortgage ..... +0.91*
	Indian Gaming Payments ..... -0.5	

\*Percentage point change; \*\*Less than 0.05 percent;  
NA = Not Available

## THE CONNECTICUT ECONOMIC DIGEST

January 2014

### THE CONNECTICUT

## ECONOMIC DIGEST

A joint publication of  
The Connecticut Departments of Labor and  
Economic and Community Development



Mailing address:

Connecticut Economic Digest  
Connecticut Department of Labor  
Office of Research  
200 Folly Brook Boulevard  
Wethersfield, CT 06109-1114

The Connecticut Economic Digest  
is available on the internet at:  
<http://www.ctdol.state.ct.us/lmi>

### DO YOU WANT TO BE NOTIFIED BY EMAIL WHEN THE DIGEST IS PUBLISHED EACH MONTH?

Simply email to [imailsrv@list.state.ct.us](mailto:imailsrv@list.state.ct.us) with only the following in the body of the message, leave subject blank:  
**SUBSCRIBE DOL-CTEconomicDigest your\_name**  
(type in your name where it says your\_name)

- If you wish to have your name removed from our mailing list, please check here and return this page (or a photocopy) to the address at left.
- If your address has changed, please check here, make the necessary changes to your address label and return this page to the address at left.
- If you receive more than one copy of this publication, please check here and return this page from the duplicate copy to the address at left.