

**JUNE 2025**

## IN THIS ISSUE...

**Connecticut Exports Grew for the Fourth Year** ..... 1, 4-5

**Town Unemployment Rates Remain Low in 2024** ..... 2-3

### Economic Indicators

on the Overall Economy	5
Individual Data Items	6-8
Comparative Regional Data	9
Economic Indicator Trends	10-11
Help Wanted OnLine	15
Business and Employment Changes Announced in the News Media	19
Labor Market Areas:	
Nonfarm Employment	12-17
Sea. Adj. Nonfarm Employment	14
Labor Force	18
Hours and Earnings	19
Cities and Towns:	
Labor Force	20-21
Housing Permits	22
Technical Notes	23
At a Glance	24

## In April...

### Nonfarm Employment

Connecticut	1,718,700
Change over month	+0.40%
Change over year	+0.70%

United States	159,517,000
Change over month	+0.11%
Change over year	+1.19%

### Unemployment Rate

Connecticut	3.7%
United States	4.2%

### Consumer Price Index

United States	320.795
Change over year	+2.3%

## Connecticut Exports Grew for the Fourth Year

*By Patrick J. Flaherty, Director of Research and Information*

**C**onnecticut exports grew for the fourth consecutive year in 2024. Commodity exports increased by more than \$1.5 billion or 9.7% (the ninth fastest in the nation) after increasing 3.2% in 2023.<sup>1</sup> Many Connecticut companies export. The most recent data indicates that 4,714 companies exported from Connecticut in 2022. 89% of these companies were small and medium-size enterprises (SMEs) with fewer than 500 employees. According to the most recent data, approximately 50,000 jobs were supported by Connecticut exports.<sup>2</sup>

### Connecticut Export Composition

In 2024 at the two-digit Harmonized System (HS) commodity code level, Connecticut top five export commodities were (1) aircraft, spacecraft, and parts thereof; (2) industrial machinery, including computers (3) electric machinery, sound equipment, TV equipment, Parts; (4) optic, photo, medical or surgical instruments; and (5) special classification provisions, which typically consists of exports of repaired imports. This top five list is unchanged from 2023. Each of the top five export commodity sectors experienced increases in 2024. The state's aerospace sector increased by over \$650 million in 2024 (+14.0%) and had the largest increase of any sector, although the sector remained below pre-pandemic levels. Industrial machinery including computers rose \$323 million (+8.6%) while electrical machinery was up \$206 million (+13.5%). The industrial machinery including computers

sector is up more than \$1.8 billion (+81.6%) from ten years ago (2014).<sup>3</sup>

### Connecticut Partner Countries

In 2024, the state's top ten commodity export destinations were Canada, Germany, Mexico, China, the Netherlands, the United Kingdom, France, Singapore, Japan, and South Korea. The largest 2024 increases were exports to Mexico, China, Canada, Poland, Singapore, and Hong Kong which each saw exports increase by over \$100 million followed by Brazil, the Philippines, and the Netherlands with increases of over \$90 million each. Exports to Germany, France, and the United Kingdom decreased in 2024 although Connecticut exports to those countries still averaged over \$1 billion each. Compared to ten years ago (2014) Connecticut exports more to the Netherlands, China, Singapore, Mexico, Canada, and the United Kingdom (up more than \$300 million each) but less to France, the United Arab Emirates, Algeria and South Korea. Even with these changes the top 10 countries receiving the most Connecticut exports is largely unchanged from the 2014 top ten list with the exceptions of the United Arab Emirates (down from 5<sup>th</sup> to 15<sup>th</sup>) and Singapore (up from 12<sup>th</sup> to 8<sup>th</sup>).

Aircraft, spacecraft, and parts was the largest Connecticut export commodity to Canada in 2024 followed by industrial machinery, electrical machinery, and plastics. Aircraft and industrial machinery had the largest 2024 increases in exports to Canada. Aircraft and industrial machinery were also the

-continued on page 4-

## THE CONNECTICUT ECONOMIC DIGEST

*The Connecticut Economic Digest* is published monthly by the Connecticut Department of Labor, Office of Research. Its purpose is to regularly provide users with a comprehensive source for the most current, up-to-date data available on the workforce and economy of the state, within perspectives of the region and nation.

The annual subscription is \$50. Send subscription requests to: *The Connecticut Economic Digest*, Connecticut Department of Labor, Office of Research, 200 Folly Brook Boulevard, Wethersfield, CT 06109-1114. Make checks payable to the Connecticut Department of Labor. Back issues are \$4 per copy. The Digest can be accessed free of charge from the DOL Web site. Articles from *The Connecticut Economic Digest* may be reprinted if the source is credited. Please send copies of the reprinted material to the Managing Editor. The views expressed by the authors are theirs alone and may not reflect those of the Connecticut Department of Labor.

This workforce product was funded in part by a grant awarded by the U.S. Department of Labor's Employment and Training Administration. The product was created by the recipient and does not necessarily reflect the official position of the U.S. Department of Labor. The U.S. Department of Labor makes no guarantees, warranties, or assurances of any kind, express or implied, with respect to such information, including any information on linked sites and including, but not limited to, accuracy of the information or its completeness, timeliness, usefulness, adequacy, continued availability, or ownership. This product is copyrighted by the institution that created it. Internal use by an organization and/or personal use by an individual for non-commercial purposes is permissible. All other uses require the prior authorization of the copyright owner.

**Managing Editor:** Jungmin Charles Joo

**Associate Editor:** Erin C. Wilkins

We would like to acknowledge the contributions of many DOL Research staff and Rob Damroth to the publication of the Digest.

### Connecticut Department of Labor

Danté Bartolomeo, Commissioner  
Daryle Dudzinski, Deputy Commissioner  
Mark Polzella, Deputy Commissioner

Patrick J. Flaherty, Director  
Office of Research  
200 Folly Brook Boulevard  
Wethersfield, CT 06109-1114  
Phone: (860) 263-6255  
Fax: (860) 263-6263  
E-Mail: [dol.econdigest@ct.gov](mailto:dol.econdigest@ct.gov)  
Website: <http://www.ctdol.state.ct.us/lmi>



# Town Unemployment Rates Remain Low in 2024

By Jungmin Charles Joo, CT Department of Labor

**I**n 2024, the annual average statewide unemployment rate was 3.2%, unchanged over the year. After two years of strong labor force growth when unemployment rates fell sharply in most towns, most towns saw small changes (up or down) in 2024, with 39 towns seeing no change from the 2023 level. The Local Area Unemployment Statistics (LAUS) underwent a major change reflecting new geographies, so all 169 cities and towns were revised for 2016-2024.

## 2023 to 2024

The unemployment rate in 60% of the cities and towns in the state fell in 2024. Roxbury had the lowest unemployment rate of 1.9%, while the residents of both Hartford and Waterbury experienced the highest rate of 5.0% last year (see table on page 3 for the complete town data). Overall, a total of 129 cities and towns had jobless rates below the 2024 statewide figure of 3.2%, 29 had rates above it, and 11 had rates equal to it. By comparison, 122 cities and towns had rates below the 2023 statewide average of 3.2%, 39 above it, and 8 were the same.

Of the five largest cities in the state with a population of 100,000 or more, Stamford had the lowest unemployment rate of 2.8% in 2024. Hartford and Waterbury posted the highest jobless rate among the large

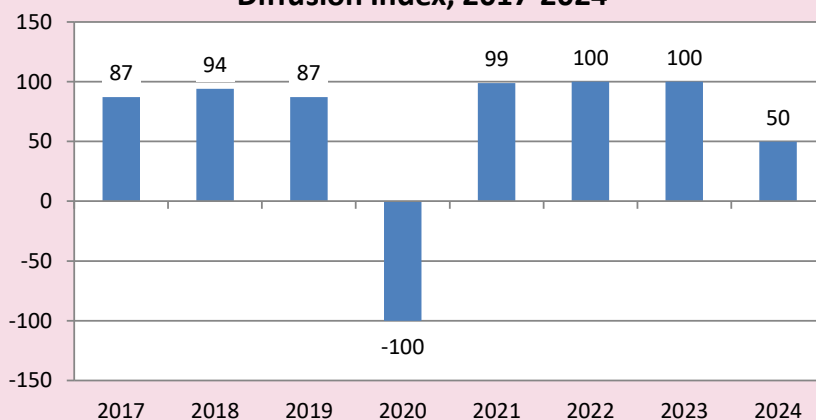
cities at 5.0%. All but Stamford experienced over-the-year unemployment rate increases.

## Town Unemployment Rate Diffusion Index

The Town Unemployment Rate Diffusion Index is calculated by subtracting the share of towns that experienced increases in their unemployment rates from the share that had rate decreases over the year.

The 2020 diffusion index value plunged to -100, as all 169 cities and towns experienced an increase in unemployment rate from the impact of the pandemic. However, the index bounced back in 2021 and completely in 2022 and continued in 2023 with +100, reflecting a strong labor market recovery. Last year, however, this robust momentum was halved, as the index fell to +50 (chart). And in the first months of 2025, the statewide unemployment rate started to trend up from unsustainably low levels. While there are persistent uncertainties regarding inflation and the national economy, Connecticut's unemployment rate has remained below 4.0% since mid-2022 through the first eight months of 2025 and has been below the national average for 32 months. ■

Connecticut Town Unemployment Rate  
Diffusion Index, 2017-2024



### Annual Average Unemployment Rate by Town, 2020-2024

Town/City	2020	2021	2022	2023	2024	Town/City	2020	2021	2022	2023	2024	Town/City	2020	2021	2022	2023	2024
Andover	7.1	5.1	3.3	3.0	2.5	Griswold	9.9	7.5	4.5	3.3	3.2	Prospect	7.0	5.8	4.1	3.2	3.1
Ansonia	9.6	8.0	4.9	3.9	4.0	Groton	8.7	6.6	3.7	2.8	2.7	Putnam	8.5	6.5	4.5	3.4	3.4
Ashford	7.9	6.2	4.4	3.4	3.5	Guilford	6.1	4.6	3.3	2.7	2.4	Redding	6.4	5.0	3.7	3.0	2.7
Avon	5.3	4.4	3.2	2.7	2.4	Haddam	6.3	5.1	3.3	2.6	2.7	Ridgefield	5.5	4.7	3.2	2.8	2.5
Barkhamsted	7.0	6.0	3.5	2.6	2.4	Hamden	7.3	6.0	3.9	3.1	3.1	Rocky Hill	6.4	5.2	3.6	2.7	2.7
Beacon Falls	6.9	5.6	3.6	3.0	2.9	Hampton	6.3	6.5	4.0	3.1	2.9	Roxbury	4.7	4.3	2.6	2.1	1.9
Berlin	6.5	5.5	3.6	2.8	2.7	Hartford	12.5	10.5	5.9	4.6	5.0	Salem	8.1	5.6	4.0	2.9	2.6
Bethany	5.6	4.1	3.2	2.5	2.5	Hartland	5.5	4.7	3.2	2.7	2.6	Salisbury	4.7	4.4	3.4	2.6	2.4
Bethel	7.3	5.2	3.5	2.8	2.7	Harwinton	5.6	4.5	3.8	2.6	2.6	Scotland	7.6	6.5	3.6	2.7	2.9
Bethlehem	6.7	5.7	4.5	3.5	3.1	Hebron	6.7	5.6	3.4	2.7	2.5	Seymour	7.6	5.8	4.3	3.4	3.2
Bloomfield	8.5	7.2	4.7	3.3	3.5	Kent	6.0	4.6	3.9	2.7	2.5	Sharon	4.3	3.8	2.5	2.1	2.0
Bolton	6.0	5.5	3.5	2.8	2.6	Killingly	8.4	6.9	4.4	3.6	3.5	Shelton	7.7	5.9	3.9	3.4	3.1
Bozrah	8.5	6.3	3.3	2.4	2.7	Killingworth	6.4	5.7	3.6	2.7	2.7	Sherman	6.1	4.6	3.3	2.6	2.4
Branford	7.1	5.6	3.5	2.9	2.7	Lebanon	7.6	6.9	4.1	3.1	3.1	Simsbury	5.7	4.7	3.2	2.7	2.4
Bridgeport	11.0	9.2	5.2	4.0	4.3	Ledyard	9.3	6.2	3.9	2.7	2.7	Somers	6.8	5.4	4.0	2.9	2.8
Bridgewater	6.1	4.9	3.8	2.4	3.3	Lisbon	9.9	7.9	5.3	3.6	3.2	South Windsor	6.5	5.0	3.4	2.7	2.6
Bristol	8.5	7.1	4.4	3.6	3.5	Litchfield	6.2	5.5	3.7	2.9	2.5	Southbury	6.4	5.0	3.6	2.9	2.7
Brookfield	7.4	5.7	3.6	3.0	2.9	Lyme	4.8	4.3	3.3	2.5	2.4	Southington	6.7	5.2	3.6	2.8	2.7
Brooklyn	7.5	5.9	4.3	3.3	3.0	Madison	5.5	4.4	3.1	2.6	2.3	Sprague	9.5	7.6	4.7	3.4	3.0
Burlington	6.2	5.4	3.4	2.7	2.6	Manchester	8.7	6.8	4.2	3.2	3.3	Stafford	7.9	6.7	4.6	3.4	3.2
Canaan	7.1	5.5	3.5	3.4	2.5	Mansfield	6.0	5.2	4.3	3.5	3.2	Stamford	7.4	5.4	3.4	2.8	2.8
Canterbury	7.7	5.6	3.7	3.1	3.1	Marlborough	6.2	5.2	3.5	2.8	2.9	Sterling	9.5	7.6	5.4	4.3	3.9
Canton	6.5	5.6	3.8	2.9	2.7	Meriden	9.2	8.1	4.7	3.8	4.0	Stonington	7.5	5.4	3.6	2.9	2.7
Chaplin	7.5	6.6	3.6	3.0	2.7	Middlebury	6.6	5.0	3.5	2.9	2.7	Stratford	9.1	7.4	4.6	3.7	3.6
Cheshire	6.0	4.8	3.3	2.7	2.5	Middlefield	7.2	5.6	3.8	2.9	2.9	Suffield	6.0	5.1	3.6	2.7	2.5
Chester	7.6	5.7	3.6	2.8	2.8	Middletown	7.3	6.3	3.9	3.1	3.1	Thomaston	7.2	6.0	4.0	3.3	3.3
Clinton	6.7	5.0	3.2	2.5	2.5	Milford	7.2	5.6	3.4	2.8	2.6	Thompson	6.7	5.7	3.9	3.2	2.8
Colchester	7.2	5.9	3.7	2.9	2.7	Monroe	6.7	5.3	3.7	3.1	2.8	Tolland	5.6	4.8	3.3	2.6	2.2
Colebrook	6.2	5.4	4.4	3.2	2.6	Montville	9.4	6.1	3.9	2.8	2.7	Torrington	8.4	7.0	4.4	3.4	3.3
Columbia	6.8	5.6	3.9	2.9	2.6	Morris	6.4	4.6	3.9	2.9	2.5	Trumbull	7.1	5.6	3.7	3.2	2.9
Cornwall	5.5	3.8	3.0	2.3	2.1	Naugatuck	8.0	6.6	4.2	3.5	3.5	Union	6.0	5.5	3.8	2.9	2.2
Coventry	7.0	6.0	4.3	3.1	3.1	New Britain	10.9	9.9	5.6	4.2	4.5	Vernon	8.3	6.5	4.1	3.1	3.2
Cromwell	7.4	5.7	3.9	3.1	2.9	New Canaan	5.3	4.3	3.3	2.9	2.6	Voluntown	7.9	6.1	3.7	2.8	2.4
Danbury	7.3	5.6	3.6	2.8	2.8	New Fairfield	7.4	5.8	4.2	3.1	3.0	Wallingford	7.0	5.6	3.7	2.8	2.7
Darien	4.7	4.2	2.9	2.7	2.4	New Hartford	6.0	5.1	3.2	2.6	2.4	Warren	6.1	5.9	4.1	2.9	2.3
Deep River	6.6	5.2	3.5	2.6	2.5	New Haven	8.7	7.8	4.5	3.4	3.6	Washington	5.5	4.9	3.3	2.3	2.4
Derby	9.6	7.7	4.8	4.0	4.4	New London	12.1	9.1	5.0	3.7	3.7	Waterbury	11.3	10.0	5.9	4.8	5.0
Durham	5.1	3.8	2.8	2.2	2.2	New Milford	7.6	6.0	3.8	2.9	2.9	Waterford	8.3	6.2	4.1	3.0	2.9
East Granby	7.0	5.8	3.6	2.9	2.9	Newington	7.5	5.6	3.6	2.7	2.6	Watertown	7.0	5.6	3.7	3.1	3.0
East Haddam	7.3	5.8	3.7	3.0	2.9	Newtown	6.4	5.3	3.5	2.8	2.8	West Hartford	6.1	4.9	3.2	2.6	2.5
East Hampton	6.9	5.9	3.9	2.7	2.9	Norfolk	6.4	4.9	3.4	2.6	2.9	West Haven	9.3	7.5	4.6	3.5	3.7
East Hartford	10.8	9.0	5.2	4.0	4.2	North Branford	6.6	5.6	4.0	3.0	2.9	Westbrook	6.5	5.3	3.5	2.8	2.3
East Haven	8.4	6.9	4.3	3.4	3.4	North Canaan	8.0	6.5	4.3	3.5	3.2	Weston	5.4	4.4	2.9	2.7	2.6
East Lyme	7.5	5.8	3.7	2.7	2.5	North Haven	6.9	5.2	3.6	2.8	2.7	Westport	5.7	4.5	3.2	2.9	2.7
East Windsor	7.5	6.3	4.3	3.1	3.2	North Stonington	7.3	5.7	3.9	2.9	2.7	Wethersfield	7.0	5.8	3.7	2.8	2.7
Eastford	6.0	5.3	3.9	2.8	2.4	Norwalk	8.0	6.0	3.6	3.0	3.0	Willington	7.5	6.6	4.0	3.1	3.1
Easton	6.1	5.0	3.5	2.9	2.6	Norwich	13.9	8.9	4.6	3.7	3.7	Wilton	5.2	4.3	2.9	2.5	2.5
Ellington	6.5	5.5	3.8	3.0	2.8	Old Lyme	6.2	5.0	3.5	2.8	2.6	Winchester	8.9	7.2	4.7	3.7	3.6
Enfield	7.7	6.3	4.2	3.1	3.1	Old Saybrook	6.1	5.1	3.6	2.6	2.6	Windham	10.0	9.4	5.7	4.2	4.1
Essex	5.6	4.1	2.9	2.5	2.2	Orange	6.3	4.5	3.0	2.5	2.3	Windsor	8.1	6.8	4.0	3.1	3.2
Fairfield	6.6	5.1	3.6	3.1	2.9	Oxford	6.5	5.3	3.6	2.8	2.8	Windsor Locks	8.3	6.7	4.2	3.2	3.3
Farmington	5.7	4.6	3.2	2.5	2.4	Plainfield	9.0	6.6	4.0	3.4	3.2	Wolcott	7.1	5.8	3.7	3.2	3.0
Franklin	8.3	6.5	4.1	3.0	2.9	Plainville	7.9	6.6	4.1	3.2	3.2	Woodbridge	5.6	4.2	3.2	2.5	2.3
Glastonbury	5.6	4.3	3.0	2.4	2.3	Plymouth	8.2	6.9	4.9	3.7	3.7	Woodbury	6.7	5.6	3.8	2.9	2.9
Goshen	5.0	4.5	3.3	2.4	2.1	Pomfret	5.4	4.7	3.0	2.7	2.7	Woodstock	6.7	5.2	3.9	3.0	2.7
Granby	5.9	5.2	3.2	2.7	2.5	Portland	6.9	5.4	3.8	3.1	2.9						
Greenwich	5.6	4.5	3.2	2.7	2.5	Preston	9.9	7.0	4.5	3.5	2.9	CONNECTICUT	8.0	6.5	4.1	3.2	3.2

Source: U.S. Bureau of Labor Statistics and Connecticut Department of Labor, Office of Research

## Connecticut Exports by Commodity

Rank	Description	ANNUAL 2023	ANNUAL 2024	\$2023-2024	%2023-2024
	TOTAL ALL COMMODITIES	15,846,199,458	17,382,116,184	1,535,916,726	9.69
1	Aircraft, Spacecraft, and Parts thereof	4,757,768,070	5,421,978,810	664,210,740	13.96
2	Industrial Machinery, Including Computers	3,768,554,192	4,092,467,401	323,913,209	8.60
3	Electric Machinery, Sound Equip; TV Equip; Parts	1,527,617,643	1,733,567,267	205,949,624	13.48
4	Optic, Photo Etc, Medical or Surgical Instruments	1,277,288,354	1,307,675,894	30,387,540	2.38
5	Special Classification Provisions	667,158,589	672,931,889	5,773,300	0.87
6	Plastics and articles thereof	542,980,858	602,720,190	59,739,332	11.00
7	Vehicles and Parts, (except Railway or Tramway)	170,210,167	227,667,679	57,457,512	33.76
8	Miscellaneous Chemical Products	217,915,698	217,120,949	-794,749	-0.36
9	Articles of Iron or Steel	207,900,135	202,740,733	-5,159,402	-2.48
10	Iron and Steel	181,951,398	185,790,080	3,838,682	2.11

## Connecticut Exports by Partner Country

Rank	Description	ANNUAL 2023	ANNUAL 2024	\$2023-2023	%2023-2024
	TOTAL ALL PARTNER COUNTRIES	15,846,199,458	17,382,116,184	1,535,916,726	9.69
1	Canada	2,117,446,509	2,306,377,880	188,931,371	8.92
2	Germany	2,099,324,543	1,789,416,229	-309,908,314	-14.76
3	Mexico	1,074,246,319	1,669,797,575	595,551,256	55.44
4	China	989,639,938	1,458,265,486	468,625,548	47.35
5	Netherlands	1,147,269,475	1,238,756,168	91,486,693	7.97
6	United Kingdom	1,098,135,450	1,026,880,717	-71,254,733	-6.49
7	France	1,057,573,423	830,534,271	-227,039,152	-21.47
8	Singapore	582,589,432	738,029,058	155,439,626	26.68
9	Japan	475,027,860	527,416,550	52,388,690	11.03
10	Republic of Korea	477,905,196	428,532,657	-49,372,539	-10.33

-continued from page 1-

top two commodity exports to Germany followed by optic, photo, medical or surgical instruments, and electrical machinery. Electrical machinery was the top export commodity from Connecticut to Mexico followed by aircraft, industrial machinery, and sugars and sugar confectionary.

### U.S. Exports

The annual U.S. trade deficit increased by \$129 billion in 2024 after contracting \$150 billion in 2023. Exports of goods and services increased \$140 billion in 2024 while imports increased by \$269 billion.<sup>4</sup> Commodities exports increased \$46.5 billion to over \$2 trillion with Canada and Mexico the top two destinations for U.S. exports with \$348.5 and \$334.0 billion respectively.<sup>5</sup> China was third at \$143.5 billion followed by the Netherlands at \$89.6 billion. The largest increases were Mexico (+\$11.3 billion), Malaysia (+\$8.3 billion), and the Netherlands (+\$8.3 billion). Exports to Canada, Belgium, and China had the largest declines. Exports to China declined for the second consecutive year and fell below 7% of all U.S. commodities

exports after being as high as 8.7% of commodities exports in 2020.

The top five U.S. export commodities were (1) mineral fuel, oil, bitumen substances, mineral wax; (2) industrial machinery, including computers; (3) electric machinery, sound equipment, TV equipment, parts; (4) vehicles, expert railway or tramway; and (5) aircraft, spacecraft, and parts. The largest increase was industrial machinery including computers which increased more than \$19.0 billion. Electric machinery, sound equipment, TV equipment, parts increased by \$12.8 billion and aircraft, spacecraft, and parts increased by \$8.9 billion.

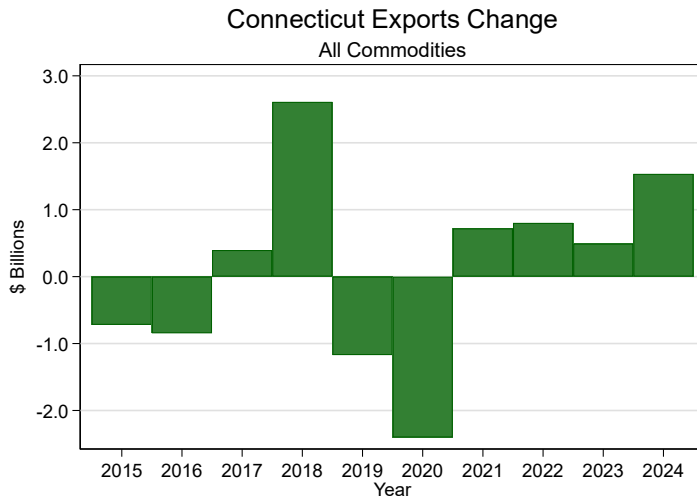
For the second consecutive year, Connecticut rose one place in 2024 and now ranks 30<sup>th</sup> in the U.S. in state-by-state exports. Three of the four largest states also had the most exports: Texas, California, and New York. Texas, Kentucky, and New Mexico had the largest increases in exports, up more the \$7 billion each. As mentioned above, Connecticut exports increased more than \$1.5 billion, a 9.7% increase – ninth fastest in the nation.

### New England Exports

In 2024, the New England region's top five export commodities were (1) industrial machinery, including computer; (2) optic, photo, medical or surgical instruments; (3) electric machinery, sound equipment, TV equipment, parts; (4) aircraft, spacecraft, and parts thereof, (5) pharmaceutical products. Precious stones and metals had the largest increase in 2024 followed by industrial machinery including computers and aircraft, spacecraft, and parts thereof. Exports of pharmaceuticals declined in 2024 but remained about 2022 and were more than twice the level that prevailed before 2021.

As a region, New England's commodity exports increased by \$629 million in 2024 and totaled more than \$67.3 billion. The top five export destinations for New England Commodities were Canda, Mexico, China, Germany, and the United Kingdom. In 2024 the exports to the United Kingdom, Mexico, Singapore, and China increased by more than \$1 billion each. Switzerland saw the fifth largest increase with New England exports up by over \$760 million.





### 2025 and Beyond

For the first five months of 2025 (latest available) U.S. exports of goods and services were up \$73.6 billion (5.5%) above the same period of 2024. If this growth continues, Connecticut and New England should have another year of expanding exports. There remains

considerable uncertainty about the future of U.S. trade policy and the reaction to those policy changes by our trading partners. If there are trade conflicts between the U.S. and Connecticut's largest trading partners (Canada, Mexico, and countries in the European Union)

they would pose downside risks for Connecticut. On the other hand, Connecticut exporters are well-positioned to take advantage of opportunities that might arise with new agreements with these and other trading partners. ■

1 U.S. Census Bureau, Foreign Trade Division via [wisertrade.org](https://www.wisertrade.org)

2 <https://www.trade.gov/data-visualization/state-trade-and-economy-factsheets>

3 This and the following information regarding commodities exports U.S. Census Bureau, Foreign Trade Division via [wisertrade.org](https://www.wisertrade.org)

4 <https://www.census.gov/foreign-trade/index.html>

5 This and the following information regarding commodities exports U.S. Census Bureau, Foreign Trade Division via [wisertrade.org](https://www.wisertrade.org)

## GENERAL ECONOMIC INDICATORS

(Seasonally adjusted)	4Q 2024	4Q 2023	YoY CHG		3Q 2024	QoQ CHG	
			NO.	%		NO.	%
<b>General Drift Indicator (2007=100)*</b>							
Leading	114.1	109.6	4.4	4.1	113.9	0.2	0.16
Coincident	98.5	97.3	1.2	1.3	98.1	0.4	0.44
<b>Real Gross Domestic Product**</b>	4Q 2024	4Q 2023	YoY CHG		3Q 2024	QoQ CHG	
(Millions of chained 2017 dollars)			NO.	%		NO.	%
Connecticut	296,626	291,291	5,335	1.8	295,295	1,331	0.5
United States	23,542,349	22,960,600	581,749	2.5	23,400,294	142,055	0.6
New England	1,213,169	1,181,916	31,253	2.6	1,207,363	5,805	0.5
<b>Per Capita Personal Income**</b>	4Q 2024	4Q 2023	YoY CHG		3Q 2024	QoQ CHG	
(Current \$, SAAR)			NO.	%		NO.	%
Connecticut	94,192	90,596	3,596	4.0	93,408	784	0.8
United States	73,251	70,340	2,911	4.1	72,537	714	1.0
New England	88,544	84,927	3,617	4.3	87,696	848	1.0
<b>Philadelphia Fed's Coincident Index (2007=100)***</b>	Apr 2025	Apr 2024	YoY CHG		Mar 2025	MoM CHG	
			NO.	%		NO.	%
Connecticut	134.76	133.05	1.70	1.3	134.75	0.01	0.0
United States	147.03	143.66	3.37	2.3	146.69	0.34	0.2

Sources: \*Dr. Steven P. Lanza, University of Connecticut, <https://steven-landa.uconn.edu/the-connecticut-green-sheet/>

\*\*U.S. Bureau of Economic Analysis \*\*\*Federal Reserve Bank of Philadelphia

**General Drift Indicators** are composite measures of the four-quarter change in three coincident (Connecticut Manufacturing Production Index, nonfarm employment, and real personal income) and three leading (housing permits, manufacturing average weekly hours, and initial unemployment claims) economic variables, and are indexed so 2007 = 100.

The **Philadelphia Fed's Coincident Index** summarizes current economic condition by using four coincident variables: nonfarm payroll employment, average hours worked in manufacturing, the unemployment rate, and wage and salary disbursements deflated by the consumer price index (U.S. city average).

Total nonfarm  
employment increased  
over the year.

## EMPLOYMENT BY INDUSTRY SECTOR

	Apr 2025	Apr 2024	CHANGE		Mar 2025
(Seasonally adjusted; 000s)			NO.	%	
<b>TOTAL NONFARM</b>	1,718.7	1,706.7	12.0	0.7	1,711.8
Natural Res & Mining	0.5	0.5	0.0	0.0	0.5
Construction	62.0	63.0	-1.0	-1.6	61.9
Manufacturing	154.3	156.4	-2.1	-1.3	154.4
Trade, Transportation & Utilities	302.1	298.8	3.3	1.1	300.4
Information	30.3	30.7	-0.4	-1.3	30.5
Financial Activities	119.2	117.7	1.5	1.3	119.6
Professional and Business Services	223.3	220.5	2.8	1.3	220.0
Education and Health Services	372.0	364.5	7.5	2.1	370.2
Leisure and Hospitality	155.6	154.4	1.2	0.8	155.4
Other Services	64.3	63.6	0.7	1.1	63.9
Government*	235.1	236.6	-1.5	-0.6	235.0

Source: Connecticut Department of Labor \* Includes Native American tribal government employment

Average weekly initial  
claims fell from a year  
ago.

## UNEMPLOYMENT

	Apr 2025	Apr 2024	CHANGE		Mar 2025
(Seasonally adjusted)			NO.	%	
<b>Labor Force, resident (000s)</b>	1,960.2	1,936.4	23.8	1.2	1,956.4
Employed (000s)	1,888.0	1,875.6	12.4	0.7	1,886.9
Unemployed (000s)	72.2	60.8	11.4	18.8	69.5
Unemployment Rate (%)	3.7	3.1	0.6	---	3.6
Labor Force Participation Rate (%)	65.0	64.7	0.3	---	64.9
Employment-Population Ratio (%)	62.6	62.7	-0.1	---	62.6
Average Weekly Initial Claims (NSA)	3,322	3,324	-2	-0.1	2,534
Avg. Insured Unemp. Rate (% NSA)	1.50	1.55	-0.05	---	1.89
	<b>1Q 2025</b>	<b>1Q 2024</b>			<b>2024</b>
U-6 Rate (%)	7.4	7.2	0.2	---	7.1

Sources: Connecticut Department of Labor; U.S. Bureau of Labor Statistics

The production worker  
weekly earnings fell over  
the year.

## MANUFACTURING ACTIVITY

	Apr 2025	Apr 2024	CHANGE		Mar 2025	Feb 2025
(Not seasonally adjusted)			NO.	%		
<b>Production Worker Avg Wkly Hours</b>	39.8	38.6	1.2	3.1	40.1	--
Prod. Worker Avg Hourly Earnings	30.20	31.83	-1.63	-5.1	30.78	--
Prod. Worker Avg Weekly Earnings	1,201.96	1,228.64	-26.68	-2.2	1,234.28	--
CT Mfg. Prod. Index (2012=100)	98.5	95.5	3.02	3.2	97.0	91.7
Production Worker Hours (000s)	3,650	3,679	-29	-0.8	3,745	--
Industrial Electricity Sales (mil kWh)*	212	207	5	2.4	205	190
CT Mfg. Prod. Index, 12-MMA (2012=100)	99.0	98.4	0.62	0.6	98.7	98.5

Sources: Connecticut Department of Labor; U.S. Department of Energy

\*Latest two months are forecasted.

Personal income  
increased 4.7 percent  
from a year earlier.

## INCOME

	4Q 2024	4Q 2023	CHANGE		3Q 2024
(\$ Millions, SA, annualized)			NO.	%	
<b>Personal Income</b>	\$346,759.7	\$331,213.4	\$15,546.3	4.7	\$343,488.5
<b>Wages and Salaries</b>	\$153,967.2	\$146,753.6	\$7,213.6	4.9	\$152,504.6

Source: Bureau of Economic Analysis

## BUSINESS ACTIVITY

New auto registrations increased over the year.

	MONTH	LEVEL	Y/Y % CHG	YEAR TO DATE CURRENT	PRIOR	% CHG
New Housing Permits*	Apr 2025	621	11.5	1,643	1,828	-10.1
Electricity Sales (mil kWh)	Mar 2025	2,110	1.3	6,943	6,715	3.4
Construction Contracts						
Index (1980=100)	Apr 2025	513.4	-0.3	---	---	---
New Auto Registrations	Apr 2025	16,938	14.6	69,316	62,766	10.4
Exports (Bil. \$)	1Q 2025	4.57	3.2	4.57	4.43	3.2
S&P 500: Monthly Close	Apr 2025	5,569.06	10.6	---	---	---

Sources: Connecticut Department of Economic and Community Development; U.S. Department of Energy, Energy Information Administration; Connecticut Department of Revenue Services; F.W. Dodge; Connecticut Department of Motor Vehicles; Wisertrade.org

\* Estimated by the Bureau of the Census

## BUSINESS STARTS AND TERMINATIONS

Business formation, seasonally adjusted, was up over the year.

	MO/QTR	LEVEL	Y/Y % CHG	YEAR TO DATE CURRENT	PRIOR	% CHG
<b>STARTS</b>						
Business Formation, SA	Apr 2025	3,961	7.2	15,408	15,486	-0.5
Business Formation, NSA	Apr 2025	5,019	33.8	18,224	17,440	4.5
Department of Labor, NSA	3Q 2024	3,304	-2.2	11,525	11,865	-2.9
<b>TERMINATIONS</b>						
Department of Labor, NSA	3Q 2024	2,054	-23.8	6,106	6,929	-11.9

Sources: U.S. Census Bureau; Connecticut Department of Labor

## STATE REVENUES

Total all revenues was up from a year ago.

	Apr 2025	Apr 2024	% CHG	YEAR TO DATE CURRENT	PRIOR	% CHG
<i>(Millions of dollars)</i>						
TOTAL ALL REVENUES*	4,127.6	3,746.1	10.2	11,110.2	10,277.8	8.1
Corporate Tax	182.6	262.2	-30.4	902.0	885.3	1.9
Personal Income Tax	2,611.9	2,161.9	20.8	6,057.1	5,291.1	14.5
Real Estate Conv. Tax	20.4	17.3	17.9	83.1	68.6	21.1
Sales & Use Tax	545.7	678.0	-19.5	2,102.5	2,202.0	-4.5
Gaming Payments**	17.3	17.4	-0.6	69.0	69.5	-0.7

Sources: Connecticut Department of Revenue Services; Division of Special Revenue

\*Includes all sources of revenue; Only selected sources are displayed; Most July receipts are credited to the prior fiscal year and are not shown. \*\*See page 23 for explanation.

## TOURISM AND TRAVEL

Gaming slots was down over the year.

	MONTH	LEVEL	Y/Y % CHG	YEAR TO DATE CURRENT	PRIOR	% CHG
Occupancy Rate (%)*	Apr 2025	61.4	1.2	54.5	53.3	2.3
Tourism Website Visitors	Apr 2025	569,273	30.4	1,266,055	1,317,734	-3.9
Air Passenger Count	Mar 2025	554,981	5.0	1,470,937	1,414,502	4.0
Gaming Slots (Mil.\$)***	Apr 2025	809.0	-2.1	3,280.4	3,303.9	-0.7

Sources: Connecticut Department of Transportation, Bureau of Aviation and Ports; Connecticut Commission on Culture and Tourism; Division of Special Revenue

\*STR, Inc. Due to layoffs, Info Center Visitors data are no longer published.

\*\*\*See page 23 for explanation

Compensation cost for the nation rose 3.4 percent over the year.

**EMPLOYMENT COST INDEX**

<b>Private Industry Workers</b> <i>(Dec. 2005 = 100)</i>	<b>Seasonally Adjusted</b>			<b>Not Seasonally Adjusted</b>		
	<b>Mar</b>	<b>Dec</b>	<b>3-Mo</b>	<b>Mar</b>	<b>Mar</b>	<b>12-Mo</b>
	<b>2025</b>	<b>2024</b>	<b>% Chg</b>	<b>2025</b>	<b>2024</b>	<b>% Chg</b>
<b>UNITED STATES TOTAL</b>	169.2	167.8	0.8	169.4	163.8	3.4
<b>Wages and Salaries</b>	171.8	170.5	0.8	171.9	166.3	3.4
<b>Benefit Costs</b>	163.2	161.3	1.2	163.5	157.9	3.5
<b>NORTHEAST TOTAL</b>	---	---	---	170.5	165.0	3.3
<b>Wages and Salaries</b>	---	---	---	172.0	166.1	3.6

Source: U.S. Department of Labor, Bureau of Labor Statistics

U.S. inflation rate was up by 2.3 percent over the year.

**CONSUMER NEWS**

<i>(Not seasonally adjusted)</i>	MO/QTR	LEVEL	% CHANGE	
			Y/Y	P/P*
CONSUMER PRICES				
CPI-U (1982-84=100)				
U.S. City Average	Apr 2025	320.795	2.3	0.3
Purchasing Power of \$ (1982-84=\$1.00)	Apr 2025	0.312	-2.3	-0.3
Northeast Region	Apr 2025	333.065	3.1	0.3
New York-Newark-Jersey City	Apr 2025	344.047	3.9	0.4
Boston-Cambridge-Newton**	Mar 2025	343.972	2.5	0.1
CPI-W (1982-84=100)				
U.S. City Average	Apr 2025	314.243	2.1	0.3

Source: U.S. Department of Labor, Bureau of Labor Statistics

\*Change over prior monthly or quarterly period

\*\*The Boston CPI can be used as a proxy for New England and is measured every other month.

Conventional mortgage rate rose to 6.73 percent over the month.

**INTEREST RATES**

<i>(Percent)</i>	<b>Apr</b>	<b>Mar</b>	<b>Apr</b>
	<b>2025</b>	<b>2025</b>	<b>2024</b>
<b>Prime</b>	7.50	7.50	8.50
<b>Federal Funds</b>	4.33	4.33	5.33
<b>3 Month Treasury Bill</b>	4.32	4.34	5.44
<b>6 Month Treasury Bill</b>	4.20	4.27	5.38
<b>1 Year Treasury Note</b>	3.95	4.06	5.14
<b>3 Year Treasury Note</b>	3.78	3.96	4.71
<b>5 Year Treasury Note</b>	3.91	4.04	4.56
<b>7 Year Treasury Note</b>	4.08	4.16	4.56
<b>10 Year Treasury Note</b>	4.28	4.28	4.54
<b>20 Year Treasury Note</b>	4.74	4.63	4.77
<b>Conventional Mortgage</b>	6.73	6.65	6.99

Sources: Federal Reserve; Federal Home Loan Mortgage Corp.



## NONFARM EMPLOYMENT

All states in the region gained jobs over the year.

(Seasonally adjusted; 000s)	Apr 2025	Apr 2024	CHANGE		Mar 2025
			NO.	%	
Connecticut	1,718.7	1,706.7	12.0	0.7	1,711.8
Maine	658.7	654.7	4.0	0.6	657.9
Massachusetts	3,724.8	3,719.1	5.7	0.2	3,717.1
New Hampshire	709.6	701.6	8.0	1.1	710.7
New Jersey	4,398.3	4,362.3	36.0	0.8	4,393.5
New York	9,974.3	9,860.0	114.3	1.2	9,958.9
Pennsylvania	6,223.8	6,128.1	95.7	1.6	6,215.3
Rhode Island	516.0	511.7	4.3	0.8	515.7
Vermont	313.7	311.0	2.7	0.9	314.3
United States	159,517.0	157,635.0	1,882.0	1.2	159,340.0

Source: U.S. Department of Labor, Bureau of Labor Statistics

## LABOR FORCE

All but two states in the region posted increases in the labor force from last year.

(Seasonally adjusted)	Apr 2025	Apr 2024	CHANGE		Mar 2025
			NO.	%	
Connecticut	1,960,194	1,936,386	23,808	1.2	1,956,443
Maine	707,600	702,185	5,415	0.8	708,710
Massachusetts	3,943,948	3,891,099	52,849	1.4	3,936,075
New Hampshire	777,157	768,997	8,160	1.1	777,476
New Jersey	4,899,755	4,895,749	4,006	0.1	4,897,266
New York	9,877,792	9,823,074	54,718	0.6	9,863,196
Pennsylvania	6,548,403	6,602,080	-53,677	-0.8	6,542,329
Rhode Island	588,068	590,770	-2,702	-0.5	588,955
Vermont	355,436	355,015	421	0.1	356,232
United States	171,109,000	167,988,000	3,121,000	1.9	170,591,000

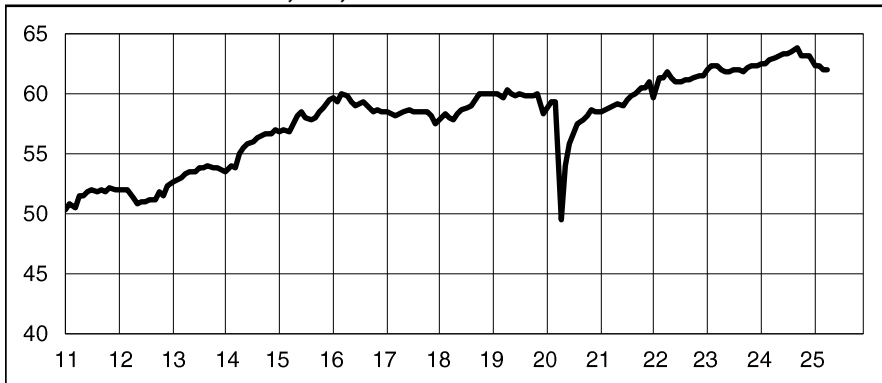
Source: U.S. Department of Labor, Bureau of Labor Statistics

## UNEMPLOYMENT RATES

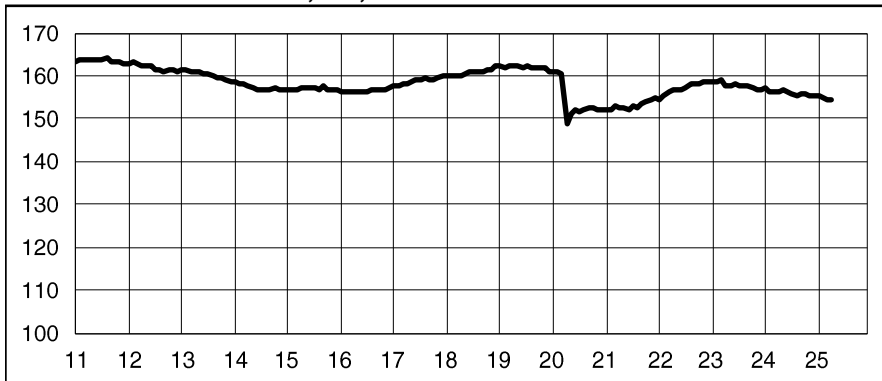
Eight states showed an increase in its unemployment rate over the year.

(Seasonally adjusted)	Apr 2025	Apr 2024	CHANGE	Mar 2025
Connecticut	3.7	3.1	0.6	3.6
Maine	3.5	2.8	0.7	3.5
Massachusetts	4.6	3.9	0.7	4.4
New Hampshire	3.1	2.4	0.7	3.1
New Jersey	4.8	4.5	0.3	4.7
New York	4.2	4.2	0.0	4.2
Pennsylvania	3.9	3.6	0.3	3.8
Rhode Island	4.9	4.2	0.7	4.8
Vermont	2.7	2.1	0.6	2.6
United States	4.2	3.9	0.3	4.2

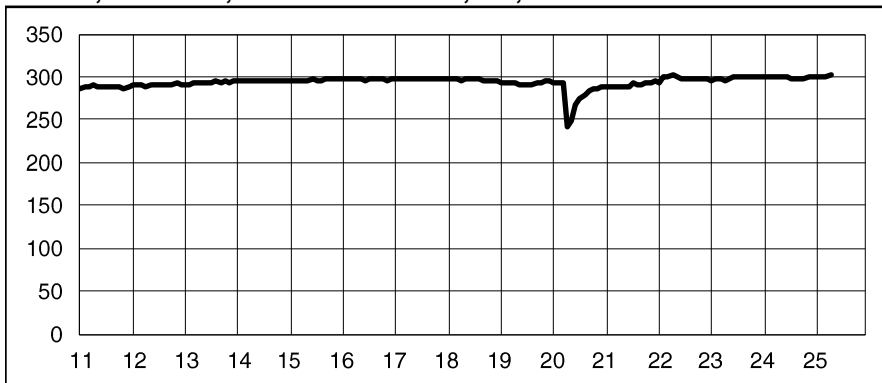
Source: U.S. Department of Labor, Bureau of Labor Statistics

**CONSTRUCTION EMP., SA, 000s**

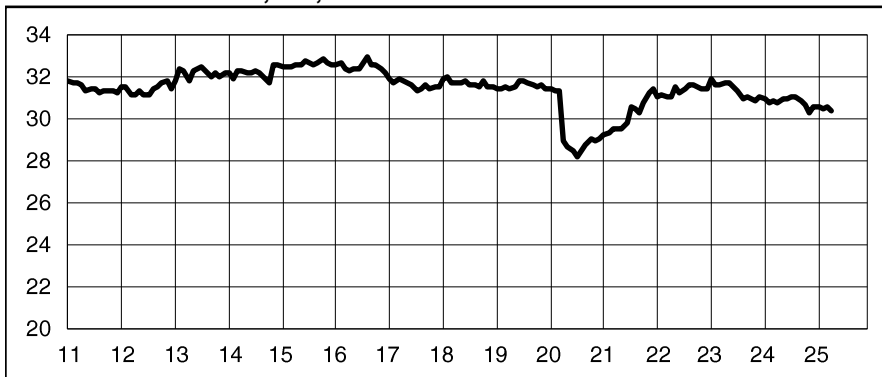
Month	2023	2024	2025
Jan	61.9	62.5	62.3
Feb	62.2	62.5	62.2
Mar	62.2	62.8	61.9
Apr	61.9	63.0	62.0
May	61.7	63.1	
Jun	61.7	63.3	
Jul	62.0	63.3	
Aug	62.0	63.5	
Sep	61.8	63.7	
Oct	62.1	63.1	
Nov	62.2	63.1	
Dec	62.3	63.1	

**MANUFACTURING EMP., SA, 000s**

Month	2023	2024	2025
Jan	158.8	157.1	155.2
Feb	158.8	156.3	154.7
Mar	159.0	156.1	154.4
Apr	157.6	156.4	154.3
May	157.7	156.6	
Jun	157.9	156.3	
Jul	157.8	155.8	
Aug	157.8	155.4	
Sep	157.6	155.6	
Oct	157.0	155.7	
Nov	156.7	155.5	
Dec	156.8	155.4	

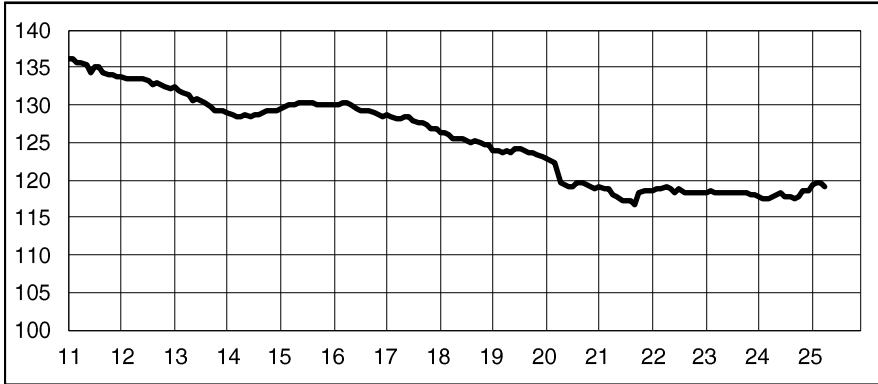
**TRADE, TRANSP., & UTILITIES EMP., SA, 000s**

Month	2023	2024	2025
Jan	296.1	299.1	300.1
Feb	297.3	299.2	299.9
Mar	297.8	299.3	300.4
Apr	295.9	298.8	302.1
May	298.4	299.6	
Jun	298.7	298.9	
Jul	300.5	298.3	
Aug	299.9	298.0	
Sep	300.1	298.3	
Oct	299.9	298.3	
Nov	299.9	298.9	
Dec	299.4	299.6	

**INFORMATION EMP., SA, 000s**

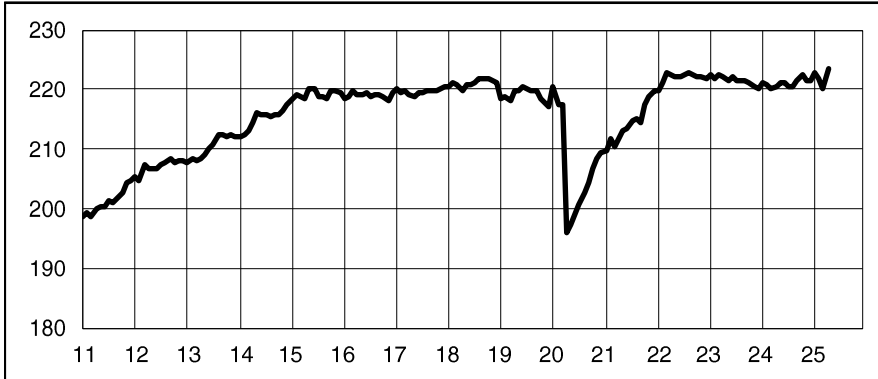
Month	2023	2024	2025
Jan	31.9	30.9	30.5
Feb	31.6	30.7	30.4
Mar	31.6	30.8	30.5
Apr	31.7	30.7	30.3
May	31.7	30.9	
Jun	31.5	30.9	
Jul	31.3	31.0	
Aug	30.9	31.0	
Sep	31.0	30.8	
Oct	30.9	30.6	
Nov	30.8	30.2	
Dec	31.0	30.5	

## FINANCIAL ACTIVITIES EMP., SA, 000s



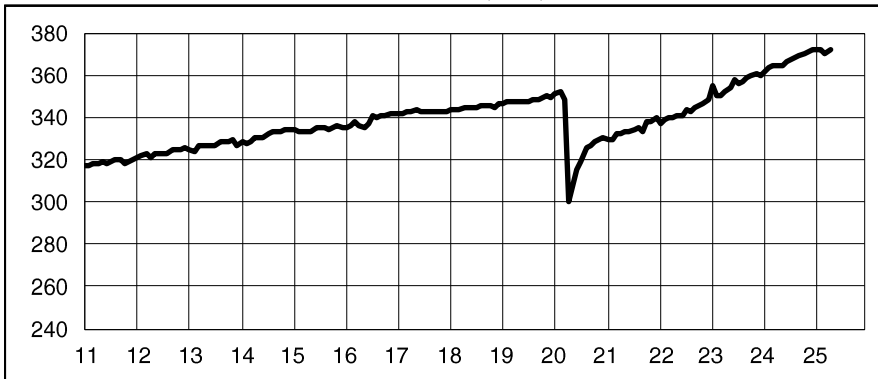
Month	2023	2024	2025
Jan	118.3	117.8	119.3
Feb	118.5	117.6	119.5
Mar	118.4	117.6	119.6
Apr	118.3	117.7	119.2
May	118.3	117.9	
Jun	118.4	118.2	
Jul	118.3	117.8	
Aug	118.3	117.7	
Sep	118.3	117.4	
Oct	118.2	117.8	
Nov	118.0	118.5	
Dec	118.1	118.6	

## PROFESSIONAL & BUSINESS SERV. EMP., SA, 000s



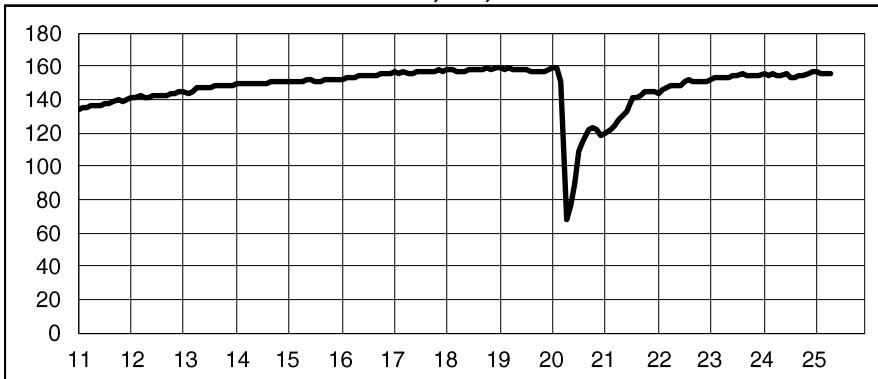
Month	2023	2024	2025
Jan	222.5	221.1	222.7
Feb	221.9	220.9	221.8
Mar	222.5	220.2	220.0
Apr	222.0	220.5	223.3
May	221.6	221.1	
Jun	222.1	221.1	
Jul	221.3	220.6	
Aug	221.5	220.3	
Sep	221.4	221.3	
Oct	221.0	222.4	
Nov	220.3	221.6	
Dec	220.0	221.4	

## EDUCATIONAL & HEALTH SERV. EMP., SA, 000s



Month	2023	2024	2025
Jan	354.5	361.8	371.9
Feb	350.3	363.3	372.3
Mar	350.1	364.4	370.2
Apr	352.4	364.5	372.0
May	353.6	364.8	
Jun	357.9	366.1	
Jul	356.0	367.3	
Aug	356.6	368.2	
Sep	358.6	368.9	
Oct	359.5	370.0	
Nov	360.6	370.8	
Dec	360.1	371.7	

## LEISURE AND HOSPITALITY EMP., SA, 000s



Month	2023	2024	2025
Jan	152.4	155.2	156.3
Feb	153.0	154.7	155.9
Mar	153.1	155.0	155.4
Apr	152.7	154.4	155.6
May	153.1	154.6	
Jun	154.3	155.1	
Jul	153.9	153.4	
Aug	154.9	153.0	
Sep	153.8	154.4	
Oct	154.4	154.3	
Nov	154.2	154.9	
Dec	154.8	156.9	

**CONNECTICUT***Not Seasonally Adjusted*

	Apr 2025	Apr 2024	CHANGE		Mar 2025
			NO.	%	
<b>TOTAL NONFARM EMPLOYMENT.....</b>	<b>1,710,400</b>	<b>1,700,100</b>	<b>10,300</b>	<b>0.6</b>	<b>1,693,300</b>
<b>TOTAL PRIVATE.....</b>	<b>1,471,000</b>	<b>1,459,900</b>	<b>11,100</b>	<b>0.8</b>	<b>1,454,400</b>
<b>GOODS PRODUCING INDUSTRIES.....</b>	<b>215,500</b>	<b>219,000</b>	<b>-3,500</b>	<b>-1.6</b>	<b>211,900</b>
<b>CONSTRUCTION, NAT. RES. &amp; MINING.....</b>	<b>62,100</b>	<b>63,200</b>	<b>-1,100</b>	<b>-1.7</b>	<b>57,900</b>
<b>MANUFACTURING.....</b>	<b>153,400</b>	<b>155,800</b>	<b>-2,400</b>	<b>-1.5</b>	<b>154,000</b>
<b>Durable Goods.....</b>	<b>120,400</b>	<b>122,300</b>	<b>-1,900</b>	<b>-1.6</b>	<b>120,900</b>
Fabricated Metal.....	26,600	26,900	-300	-1.1	26,700
Machinery.....	12,900	13,200	-300	-2.3	13,000
Computer and Electronic Product.....	9,900	10,000	-100	-1.0	9,900
Transportation Equipment.....	46,800	47,300	-500	-1.1	47,000
Aerospace Product and Parts.....	28,300	29,300	-1,000	-3.4	28,500
<b>Non-Durable Goods.....</b>	<b>33,000</b>	<b>33,500</b>	<b>-500</b>	<b>-1.5</b>	<b>33,100</b>
Chemical.....	7,500	7,800	-300	-3.8	7,500
<b>SERVICE PROVIDING INDUSTRIES.....</b>	<b>1,494,900</b>	<b>1,481,100</b>	<b>13,800</b>	<b>0.9</b>	<b>1,481,400</b>
<b>TRADE, TRANSPORTATION, UTILITIES.....</b>	<b>296,200</b>	<b>291,600</b>	<b>4,600</b>	<b>1.6</b>	<b>296,700</b>
Wholesale Trade.....	61,600	60,700	900	1.5	61,100
Retail Trade.....	163,700	163,300	400	0.2	162,800
Motor Vehicle and Parts Dealers.....	21,700	21,500	200	0.9	21,700
Building Material.....	16,300	15,900	400	2.5	15,100
Food and Beverage Stores.....	40,800	40,200	600	1.5	40,700
General Merchandise Stores.....	28,100	28,600	-500	-1.7	28,300
Transportation, Warehousing, & Utilities....	70,900	67,600	3,300	4.9	72,800
Utilities.....	5,200	5,100	100	2.0	5,200
Transportation and Warehousing.....	65,700	62,500	3,200	5.1	67,600
<b>INFORMATION.....</b>	<b>30,200</b>	<b>30,500</b>	<b>-300</b>	<b>-1.0</b>	<b>30,300</b>
Telecommunications.....	5,700	5,900	-200	-3.4	5,700
<b>FINANCIAL ACTIVITIES.....</b>	<b>118,500</b>	<b>117,000</b>	<b>1,500</b>	<b>1.3</b>	<b>119,300</b>
Finance and Insurance.....	98,700	97,700	1,000	1.0	99,500
Credit Intermediation and Related.....	19,600	19,600	0	0.0	19,800
Financial Investments and Related.....	23,600	23,100	500	2.2	23,700
Insurance Carriers & Related Activities....	55,500	55,000	500	0.9	56,000
Real Estate and Rental and Leasing.....	19,800	19,300	500	2.6	19,800
<b>PROFESSIONAL &amp; BUSINESS SERVICES.....</b>	<b>223,400</b>	<b>220,900</b>	<b>2,500</b>	<b>1.1</b>	<b>216,100</b>
Professional, Scientific.....	102,300	101,500	800	0.8	101,300
Legal Services.....	12,100	11,700	400	3.4	11,900
Computer Systems Design.....	21,300	21,800	-500	-2.3	21,100
Management of Companies.....	30,700	30,900	-200	-0.6	30,800
Administrative and Support.....	90,400	88,500	1,900	2.1	84,000
Employment Services.....	25,000	24,300	700	2.9	23,700
<b>EDUCATION AND HEALTH SERVICES.....</b>	<b>373,600</b>	<b>366,900</b>	<b>6,700</b>	<b>1.8</b>	<b>370,600</b>
Educational Services.....	77,900	77,200	700	0.9	74,200
Health Care and Social Assistance.....	295,700	289,700	6,000	2.1	296,400
Hospitals.....	66,600	64,700	1,900	2.9	66,600
Nursing & Residential Care Facilities.....	57,900	56,100	1,800	3.2	57,800
Social Assistance.....	72,600	71,000	1,600	2.3	73,300
<b>LEISURE AND HOSPITALITY.....</b>	<b>149,800</b>	<b>150,800</b>	<b>-1,000</b>	<b>-0.7</b>	<b>146,900</b>
Arts, Entertainment, and Recreation.....	25,200	27,000	-1,800	-6.7	23,800
Accommodation and Food Services.....	124,600	123,800	800	0.6	123,100
Food Serv., Restaurants, Drinking Places.	115,700	114,700	1,000	0.9	114,400
<b>OTHER SERVICES.....</b>	<b>63,800</b>	<b>63,200</b>	<b>600</b>	<b>0.9</b>	<b>62,600</b>
<b>GOVERNMENT.....</b>	<b>239,400</b>	<b>240,200</b>	<b>-800</b>	<b>-0.3</b>	<b>238,900</b>
Federal Government.....	18,100	18,600	-500	-2.7	18,400
State Government.....	76,100	75,800	300	0.4	75,300
Local Government.....	145,200	145,800	-600	-0.4	145,200

*Current month's data are preliminary. Prior months' data have been revised. All data are benchmarked to March 2024.*

## BRIDGEPORT- STAMFORD- DANBURY LMA

Not Seasonally Adjusted

	Apr 2025	Apr 2024	CHANGE		Mar 2025
			NO.	%	
<b>TOTAL NONFARM EMPLOYMENT</b> .....	<b>409,300</b>	<b>405,700</b>	<b>3,600</b>	<b>0.9</b>	<b>403,400</b>
<b>TOTAL PRIVATE</b> .....	<b>363,700</b>	<b>360,300</b>	<b>3,400</b>	<b>0.9</b>	<b>358,300</b>
<b>GOODS PRODUCING INDUSTRIES</b> .....	<b>40,800</b>	<b>41,500</b>	<b>-700</b>	<b>-1.7</b>	<b>39,700</b>
<b>CONSTRUCTION, NAT. RES. &amp; MINING</b> .....	<b>14,100</b>	<b>14,400</b>	<b>-300</b>	<b>-2.1</b>	<b>13,000</b>
<b>MANUFACTURING</b> .....	<b>26,700</b>	<b>27,100</b>	<b>-400</b>	<b>-1.5</b>	<b>26,700</b>
Durable Goods.....	19,500	20,100	-600	-3.0	19,600
<b>SERVICE PROVIDING INDUSTRIES</b> .....	<b>368,500</b>	<b>364,200</b>	<b>4,300</b>	<b>1.2</b>	<b>363,700</b>
<b>TRADE, TRANSPORTATION, UTILITIES</b> .....	<b>67,700</b>	<b>67,200</b>	<b>500</b>	<b>0.7</b>	<b>67,100</b>
Wholesale Trade.....	13,700	13,400	300	2.2	13,600
Retail Trade.....	43,700	44,000	-300	-0.7	43,000
Transportation, Warehousing, & Utilities....	10,300	9,800	500	5.1	10,500
<b>INFORMATION</b> .....	<b>12,600</b>	<b>12,800</b>	<b>-200</b>	<b>-1.6</b>	<b>12,600</b>
<b>FINANCIAL ACTIVITIES</b> .....	<b>35,100</b>	<b>34,400</b>	<b>700</b>	<b>2.0</b>	<b>35,300</b>
Finance and Insurance.....	29,800	29,000	800	2.8	30,100
Credit Intermediation and Related.....	7,100	6,900	200	2.9	7,100
Financial Investments and Related.....	17,200	16,600	600	3.6	17,300
<b>PROFESSIONAL &amp; BUSINESS SERVICES</b> .....	<b>61,700</b>	<b>60,900</b>	<b>800</b>	<b>1.3</b>	<b>59,700</b>
Professional, Scientific.....	29,700	29,200	500	1.7	29,300
Administrative and Support.....	21,400	21,300	100	0.5	19,700
<b>EDUCATION AND HEALTH SERVICES</b> .....	<b>84,800</b>	<b>83,200</b>	<b>1,600</b>	<b>1.9</b>	<b>84,700</b>
Health Care and Social Assistance.....	69,900	69,000	900	1.3	70,000
<b>LEISURE AND HOSPITALITY</b> .....	<b>42,800</b>	<b>42,200</b>	<b>600</b>	<b>1.4</b>	<b>41,400</b>
Accommodation and Food Services.....	33,300	32,400	900	2.8	32,400
<b>OTHER SERVICES</b> .....	<b>18,200</b>	<b>18,100</b>	<b>100</b>	<b>0.6</b>	<b>17,800</b>
<b>GOVERNMENT</b> .....	<b>45,600</b>	<b>45,400</b>	<b>200</b>	<b>0.4</b>	<b>45,100</b>
Federal.....	2,600	2,700	-100	-3.7	2,600
State & Local.....	43,000	42,700	300	0.7	42,500

Current month's data are preliminary. Prior months' data have been revised. All data are benchmarked to March 2024.



**HARTFORD-  
WEST HARTFORD-  
EAST HARTFORD LMA**

	Apr 2025	Apr 2024	CHANGE		Mar 2025
			NO.	%	
<b>TOTAL NONFARM EMPLOYMENT.....</b>	<b>608,900</b>	<b>605,600</b>	<b>3,300</b>	<b>0.5</b>	<b>603,400</b>
<b>TOTAL PRIVATE.....</b>	<b>508,500</b>	<b>504,800</b>	<b>3,700</b>	<b>0.7</b>	<b>503,600</b>
<b>GOODS PRODUCING INDUSTRIES.....</b>	<b>81,200</b>	<b>82,500</b>	<b>-1,300</b>	<b>-1.6</b>	<b>79,400</b>
CONSTRUCTION, NAT. RES. & MINING.....	22,200	22,800	-600	-2.6	20,300
MANUFACTURING.....	59,000	59,700	-700	-1.2	59,100
Durable Goods.....	48,700	49,200	-500	-1.0	48,800
Non-Durable Goods.....	10,300	10,500	-200	-1.9	10,300
<b>SERVICE PROVIDING INDUSTRIES.....</b>	<b>527,700</b>	<b>523,100</b>	<b>4,600</b>	<b>0.9</b>	<b>524,000</b>
TRADE, TRANSPORTATION, UTILITIES.....	100,100	97,900	2,200	2.2	100,300
Wholesale Trade.....	19,700	19,300	400	2.1	19,500
Retail Trade.....	52,700	52,100	600	1.2	52,500
Transportation, Warehousing, & Utilities.....	27,700	26,500	1,200	4.5	28,300
Transportation and Warehousing.....	26,700	25,500	1,200	4.7	27,300
INFORMATION.....	5,600	5,800	-200	-3.4	5,600
FINANCIAL ACTIVITIES.....	51,500	51,700	-200	-0.4	52,100
Depository Credit Institutions.....	4,700	4,600	100	2.2	4,700
Insurance Carriers & Related Activities.....	35,600	35,900	-300	-0.8	36,000
<b>PROFESSIONAL &amp; BUSINESS SERVICES</b>	<b>79,300</b>	<b>77,700</b>	<b>1,600</b>	<b>2.1</b>	<b>76,100</b>
Professional, Scientific.....	38,300	37,500	800	2.1	37,300
Management of Companies.....	13,200	12,700	500	3.9	13,100
Administrative and Support.....	27,800	27,500	300	1.1	25,700
<b>EDUCATION AND HEALTH SERVICES.....</b>	<b>119,200</b>	<b>116,000</b>	<b>3,200</b>	<b>2.8</b>	<b>119,200</b>
Educational Services.....	16,000	15,500	500	3.2	15,700
Health Care and Social Assistance.....	103,200	100,500	2,700	2.7	103,500
Ambulatory Health Care.....	34,600	34,200	400	1.2	34,700
<b>LEISURE AND HOSPITALITY.....</b>	<b>47,800</b>	<b>50,000</b>	<b>-2,200</b>	<b>-4.4</b>	<b>47,500</b>
Accommodation and Food Services.....	41,900	41,900	0	0.0	41,600
<b>OTHER SERVICES.....</b>	<b>23,800</b>	<b>23,200</b>	<b>600</b>	<b>2.6</b>	<b>23,400</b>
<b>GOVERNMENT .....</b>	<b>100,400</b>	<b>100,800</b>	<b>-400</b>	<b>-0.4</b>	<b>99,800</b>
Federal.....	5,500	5,800	-300	-5.2	5,600
State & Local.....	94,900	95,000	-100	-0.1	94,200

Current month's data are preliminary. Prior months' data have been revised. All data are benchmarked to March 2024.

## NEW HAVEN LMA

	Apr 2025	Apr 2024	CHANGE		Mar 2025
			NO.	%	
TOTAL NONFARM EMPLOYMENT.....	294,600	293,900	700	0.2	290,600
TOTAL PRIVATE.....	260,400	259,200	1,200	0.5	256,100
GOODS PRODUCING INDUSTRIES.....	30,300	29,600	700	2.4	29,600
CONSTRUCTION, NAT. RES. & MINING.....	10,500	10,000	500	5.0	9,800
MANUFACTURING.....	19,800	19,600	200	1.0	19,800
Durable Goods.....	13,700	13,900	-200	-1.4	13,700
SERVICE PROVIDING INDUSTRIES.....	264,300	264,300	0	0.0	261,000
TRADE, TRANSPORTATION, UTILITIES.....	57,000	56,200	800	1.4	56,900
Wholesale Trade.....	10,200	10,300	-100	-1.0	10,100
Retail Trade.....	25,900	26,100	-200	-0.8	25,600
Transportation, Warehousing, & Utilities.....	20,900	19,800	1,100	5.6	21,200
INFORMATION.....	3,300	3,400	-100	-2.9	3,300
FINANCIAL ACTIVITIES.....	10,800	10,800	0	0.0	10,800
Finance and Insurance.....	6,700	6,900	-200	-2.9	6,800
PROFESSIONAL & BUSINESS SERVICES.....	32,100	32,600	-500	-1.5	31,600
Administrative and Support.....	16,300	16,700	-400	-2.4	15,400
EDUCATION AND HEALTH SERVICES.....	92,800	91,600	1,200	1.3	90,400
Educational Services.....	37,200	37,300	-100	-0.3	34,500
Health Care and Social Assistance.....	55,600	54,300	1,300	2.4	55,900
LEISURE AND HOSPITALITY.....	23,500	24,100	-600	-2.5	23,100
Accommodation and Food Services.....	19,900	20,200	-300	-1.5	19,800
OTHER SERVICES.....	10,600	10,900	-300	-2.8	10,400
GOVERNMENT.....	34,200	34,700	-500	-1.4	34,500
Federal.....	4,800	5,000	-200	-4.0	5,100
State & Local.....	29,400	29,700	-300	-1.0	29,400

*Current month's data are preliminary. Prior months' data have been revised. All data are benchmarked to March 2024.*

## HELP WANTED ONLINE

### Connecticut HWOL: April 2025

Workforce Area	April 2025 Total Ads	Industry Sector With Most Ads	Ads Count	Occupation With Most Ads	Ads Count
Eastern	6,448	Health Care and Social Assistance	1,573	Registered Nurses	374
North Central	26,198	Health Care and Social Assistance	5,137	Registered Nurses	1,473
Northwest	10,009	Health Care and Social Assistance	2,861	Registered Nurses	798
South Central	13,644	Health Care and Social Assistance	3,378	Registered Nurses	963
Southwest	16,410	Health Care and Social Assistance	2,939	Registered Nurses	894

Source: CT DOL Research Office Analysis of HWOL Data Series

The Conference Board Help Wanted OnLine Data Series (HWOL) measures the number of new, first-time online jobs and jobs reposted from the previous month for over 16,000 Internet job boards, corporate boards and smaller job sites that serve niche markets and smaller geographic areas. The data can be used as a real-time measure of labor demand. For more information go to <https://www1.ctdol.state.ct.us/lmi/hwol.asp>.

**NORWICH-NEW LONDON-  
WILLIMANTIC LMA**

	Apr 2025	Apr 2024	CHANGE		Mar 2025
			NO.	%	
TOTAL NONFARM EMPLOYMENT.....	127,600	126,100	1,500	1.2	127,000
TOTAL PRIVATE.....	100,100	98,500	1,600	1.6	99,400
GOODS PRODUCING INDUSTRIES.....	24,900	24,500	400	1.6	24,700
CONSTRUCTION, NAT. RES. & MINING.....	3,600	3,700	-100	-2.7	3,400
MANUFACTURING.....	21,300	20,800	500	2.4	21,300
Durable Goods.....	18,300	17,800	500	2.8	18,300
Non-Durable Goods.....	3,000	3,000	0	0.0	3,000
SERVICE PROVIDING INDUSTRIES.....	102,700	101,600	1,100	1.1	102,300
TRADE, TRANSPORTATION, UTILITIES.....	20,200	20,000	200	1.0	20,300
Wholesale Trade.....	2,600	2,600	0	0.0	2,600
Retail Trade.....	13,900	14,000	-100	-0.7	13,900
Transportation, Warehousing, & Utilities.....	3,700	3,400	300	8.8	3,800
INFORMATION.....	1,300	1,300	0	0.0	1,300
FINANCIAL ACTIVITIES.....	2,600	2,600	0	0.0	2,600
PROFESSIONAL & BUSINESS SERVICES	10,300	9,900	400	4.0	10,000
EDUCATION AND HEALTH SERVICES.....	23,500	23,100	400	1.7	23,600
Health Care and Social Assistance.....	20,400	19,800	600	3.0	20,400
LEISURE AND HOSPITALITY.....	14,100	14,100	0	0.0	13,800
Accommodation and Food Services.....	12,300	12,100	200	1.7	12,000
Food Serv., Restaurants, Drinking Places.....	10,900	10,800	100	0.9	10,700
OTHER SERVICES.....	3,200	3,000	200	6.7	3,100
GOVERNMENT.....	27,500	27,600	-100	-0.4	27,600
Federal.....	2,800	2,900	-100	-3.4	2,900
State & Local.....	24,700	24,700	0	0.0	24,700

**WATERBURY-  
SHELTON LMA**

	Apr 2025	Apr 2024	CHANGE		Mar 2025
			NO.	%	
TOTAL NONFARM EMPLOYMENT.....	161,100	159,300	1,800	1.1	159,600
TOTAL PRIVATE.....	140,000	138,700	1,300	0.9	138,300
GOODS PRODUCING INDUSTRIES.....	25,800	25,900	-100	-0.4	25,200
CONSTRUCTION, NAT. RES. & MINING.....	8,100	7,600	500	6.6	7,500
MANUFACTURING.....	17,700	18,300	-600	-3.3	17,700
SERVICE PROVIDING INDUSTRIES.....	135,300	133,400	1,900	1.4	134,400
TRADE, TRANSPORTATION, UTILITIES.....	30,300	29,600	700	2.4	30,300
Wholesale Trade.....	6,700	6,500	200	3.1	6,600
Retail Trade.....	18,300	18,000	300	1.7	18,300
Transportation, Warehousing, & Utilities.....	5,300	5,100	200	3.9	5,400
INFORMATION.....	4,600	4,700	-100	-2.1	4,600
FINANCIAL ACTIVITIES.....	5,400	5,400	0	0.0	5,500
PROFESSIONAL & BUSINESS SERVICES	18,700	18,900	-200	-1.1	18,100
EDUCATION AND HEALTH SERVICES.....	36,600	35,600	1,000	2.8	36,500
Health Care and Social Assistance.....	33,500	32,600	900	2.8	33,500
LEISURE AND HOSPITALITY.....	13,400	13,500	-100	-0.7	13,000
OTHER SERVICES.....	5,200	5,100	100	2.0	5,100
GOVERNMENT.....	21,100	20,600	500	2.4	21,300
Federal.....	800	800	0	0.0	800
State & Local.....	20,300	19,800	500	2.5	20,500

Current month's data are preliminary. Prior months' data have been revised. All data are benchmarked to March 2024.

## MICROPOLITAN AREAS

	Apr 2025	Apr 2024	CHANGE		Mar 2025
			NO.	%	
TOTAL NONFARM EMPLOYMENT					
PUTNAM-NORTHEAST .....	28,500	29,000	-500	-1.7	28,100
TORRINGTON-NORTHWEST .....	37,600	36,900	700	1.9	37,000

NOTE: More industry detail data is available for the State and its five metropolitan and two micropolitan areas at: <http://www.ctdol.state.ct.us/lmi/202/covered.htm>. The data published there differ from the data in the preceding tables in that they are developed from a near-universe count of Connecticut employment covered by the unemployment insurance (UI) program, while the data here is sample-based. The data drawn from the UI program does not contain estimates of employment not covered by unemployment insurance, and is lagged several months behind the current employment estimates presented here.

## SEASONALLY ADJUSTED TOTAL NONFARM EMPLOYMENT

Labor Market Areas	Apr 2025	Apr 2024	CHANGE		Mar 2025
			NO.	%	
BRIDGEPORT-STAMFORD-DANBURY.....	411,700	407,700	4,000	1.0	409,300
HARTFORD-W.HARTFORD-E.HARTFORD.....	609,600	608,600	1,000	0.2	607,400
NEW HAVEN LMA.....	294,900	293,600	1,300	0.4	292,900
NORWICH-NEW LONDON-WILLIMANTIC.....	128,500	127,100	1,400	1.1	128,300
WATERBURY-SHELTON.....	162,000	160,400	1,600	1.0	161,200
PUTNAM-NORTHEAST*.....	28,500	29,000	-500	-1.7	28,100
TORRINGTON-NORTHWEST*.....	37,600	36,900	700	1.9	37,000

\* Not seasonally adjusted

Current month's data are preliminary. Prior months' data have been revised. All data are benchmarked to March 2024.

Labor Market Area (Not seasonally adjusted)	EMPLOYMENT STATUS	Apr 2025	Apr 2024	CHANGE NO. %		Mar 2025
<b>CONNECTICUT</b>	Civilian Labor Force	1,955,400	1,916,200	39,200	2.0	1,947,200
	Employed	1,888,200	1,864,700	23,500	1.3	1,867,400
	Unemployed	67,200	51,500	15,700	30.5	79,800
	Unemployment Rate	3.4	2.7	0.7	---	4.1
<b>Bridgeport-Stamford-Danbury</b>	Civilian Labor Force	519,800	509,600	10,200	2.0	517,100
	Employed	502,800	496,900	5,900	1.2	496,800
	Unemployed	17,100	12,700	4,400	34.6	20,300
	Unemployment Rate	3.3	2.5	0.8	---	3.9
<b>Hartford-W.Hartford-E.Hartford</b>	Civilian Labor Force	616,400	604,800	11,600	1.9	614,800
	Employed	595,100	588,100	7,000	1.2	589,700
	Unemployed	21,300	16,700	4,600	27.5	25,100
	Unemployment Rate	3.5	2.8	0.7	---	4.1
<b>New Haven</b>	Civilian Labor Force	318,900	313,500	5,400	1.7	316,900
	Employed	308,100	305,200	2,900	1.0	304,200
	Unemployed	10,800	8,200	2,600	31.7	12,700
	Unemployment Rate	3.4	2.6	0.8	---	4.0
<b>Norwich-New London-Willimantic</b>	Civilian Labor Force	143,800	140,200	3,600	2.6	143,800
	Employed	139,200	136,400	2,800	2.1	138,200
	Unemployed	4,700	3,800	900	23.7	5,600
	Unemployment Rate	3.2	2.7	0.5	---	3.9
<b>Putnam-Northeast</b>	Civilian Labor Force	42,700	41,700	1,000	2.4	42,100
	Employed	41,100	40,700	400	1.0	40,300
	Unemployed	1,600	1,100	500	45.5	1,900
	Unemployment Rate	3.7	2.6	1.1	---	4.4
<b>Torrington-Northwest</b>	Civilian Labor Force	46,600	45,300	1,300	2.9	46,200
	Employed	45,100	44,200	900	2.0	44,200
	Unemployed	1,500	1,100	400	36.4	2,000
	Unemployment Rate	3.3	2.5	0.8	---	4.3
<b>Waterbury-Shelton</b>	Civilian Labor Force	242,300	237,000	5,300	2.2	241,700
	Employed	232,800	229,600	3,200	1.4	230,400
	Unemployed	9,500	7,400	2,100	28.4	11,300
	Unemployment Rate	3.9	3.1	0.8	---	4.7
<b>UNITED STATES</b>	Civilian Labor Force	170,622,000	167,484,000	3,138,000	1.9	170,653,000
	Employed	164,043,000	161,590,000	2,453,000	1.5	163,412,000
	Unemployed	6,580,000	5,894,000	686,000	11.6	7,242,000
	Unemployment Rate	3.9	3.5	0.4	---	4.2

Current month's data are preliminary. Prior months' data have been revised. All data are benchmarked to March 2024.



	AVG WEEKLY EARNINGS				AVG WEEKLY HOURS				AVG HOURLY EARNINGS			
	Apr		CHG	Mar	Apr		CHG	Mar	Apr		CHG	Mar
(Not seasonally adjusted)	2025	2024	Y/Y	2025	2025	2024	Y/Y	2025	2025	2024	Y/Y	2025
PRODUCTION WORKER												
MANUFACTURING	\$1,201.96	\$1,228.64	-\$26.68	\$1,234.28	39.8	38.6	1.2	40.1	\$30.20	\$31.83	-\$1.63	\$30.78
DURABLE GOODS	1,249.08	1,309.77	-60.69	1,282.62	38.9	38.5	0.4	39.2	32.11	34.02	-1.91	32.72
NON-DUR. GOODS	1,069.73	998.95	70.77	1,086.29	42.5	38.9	3.6	42.7	25.17	25.68	-0.51	25.44
CONSTRUCTION	1,555.36	1,459.37	96.00	1,581.60	38.3	37.7	0.6	39.1	40.61	38.71	1.90	40.45
ALL EMPLOYEES												
STATEWIDE												
TOTAL PRIVATE	1,287.41	1,266.38	21.03	1,306.61	33.5	33.6	-0.1	33.4	38.43	37.69	0.74	39.12
GOODS PRODUCING	1,535.77	1,494.21	41.56	1,544.81	38.5	38.6	-0.1	38.2	39.89	38.71	1.18	40.44
Construction	1,617.46	1,502.34	115.12	1,617.92	37.2	36.5	0.7	37.4	43.48	41.16	2.32	43.26
Manufacturing	1,484.41	1,459.53	24.88	1,485.69	39.5	38.9	0.6	38.7	37.58	37.52	0.06	38.39
SERVICE PROVIDING	1,243.04	1,225.60	17.44	1,266.84	32.6	32.7	-0.1	32.6	38.13	37.48	0.65	38.86
Trade, Transp., Utilities	1,025.90	972.87	53.03	1,004.56	31.9	31.7	0.2	31.8	32.16	30.69	1.47	31.59
Financial Activities	2,143.64	2,219.96	-76.32	2,170.94	37.1	38.0	-0.9	38.1	57.78	58.42	-0.64	56.98
Prof. & Business Serv.	1,578.96	1,584.07	-5.11	1,641.67	36.0	36.1	-0.1	36.2	43.86	43.88	-0.02	45.35
Education & Health Ser.	1,198.22	1,130.77	67.45	1,192.29	32.9	32.7	0.2	33.0	36.42	34.58	1.84	36.13
Leisure & Hospitality	649.97	614.64	35.33	634.92	26.4	26.0	0.4	26.0	24.62	23.64	0.98	24.42
Other Services	862.51	934.51	-72.00	863.08	28.4	30.7	-2.3	28.4	30.37	30.44	-0.07	30.39
LABOR MARKET AREAS: TOTAL PRIVATE												
Bridgeport-Stamford-Danbury	1,325.68	1,305.46	20.22	1,377.08	33.2	33.1	0.1	33.4	39.93	39.44	0.49	41.23
Hartford-W.Hartford-E.Hartford	1,287.41	1,293.29	-5.88	1,313.76	33.5	33.9	-0.4	33.6	38.43	38.15	0.28	39.10
New Haven	1,271.66	1,186.64	85.02	1,241.02	33.5	32.6	0.9	33.2	37.96	36.40	1.56	37.38
Norwich-New London-Willimantic	1,145.66	1,087.72	57.94	1,155.01	32.4	32.2	0.2	32.2	35.36	33.78	1.58	35.87
Waterbury-Shelton	1,165.88	1,090.32	75.56	1,163.14	34.1	33.6	0.5	34.2	34.19	32.45	1.74	34.01

Current month's data are preliminary. Prior months' data have been revised. All data are benchmarked to March 2024.

## BUSINESS AND EMPLOYMENT CHANGES ANNOUNCED IN THE NEWS MEDIA

### New Companies and Expansions

- Groton-based Electric Boat gets \$12.4 billion contract modification for Virginia-class submarines
- Five Iron Golf picks Norwalk for first Connecticut location this fall
- PeoplesBank continues 2025 expansion into Connecticut with two new branches

### Layoffs and Closures

- Smithland Pet & Garden Centers to close 13 stores in Connecticut and Massachusetts
- Rite Aid is closing stores, including in Connecticut
- Antique flea market in Bridgeport to close
- TransAxle LLC, a manufacturer of heavy-duty truck parts, in Killingly to close
- Liberty Bank to close three Connecticut branches
- Rosemary's Bakery in Watertown to close this summer

(By Place of Residence - Not Seasonally Adjusted)

**APRIL 2025**

LMA/TOWNS	LABOR FORCE	EMPLOYED	UNEMPLOYED	%	LMA/TOWNS	LABOR FORCE	EMPLOYED	UNEMPLOYED	%
BRIDGEPORT-STAMFORD-DANBURY					HARTFORD-WEST HARTFORD-EAST HARTFORD cont...				
	519,841	502,790	17,051	3.3					
BETHEL	12,182	11,754	428	3.5	HEBRON	4,924	4,780	144	2.9
BRIDGEPORT	78,597	74,970	3,627	4.6	KILLINGWORTH	3,088	3,015	73	2.4
BRIDGEWATER	903	881	22	2.4	LYME	1,292	1,256	36	2.8
BROOKFIELD	9,618	9,310	308	3.2	MANCHESTER	32,513	31,301	1,212	3.7
DANBURY	49,596	48,118	1,478	3.0	MANSFIELD	11,749	11,384	365	3.1
DARIEN	10,524	10,279	245	2.3	MARLBOROUGH	3,283	3,176	107	3.3
EASTON	4,008	3,897	111	2.8	MIDDLEFIELD	2,304	2,241	63	2.7
FAIRFIELD	32,175	31,222	953	3.0	MIDDLETOWN	27,177	26,278	899	3.3
GREENWICH	31,534	30,668	866	2.7	NEW BRITAIN	37,782	35,864	1,918	5.1
MONROE	10,842	10,533	309	2.9	NEWINGTON	17,589	17,109	480	2.7
NEW CANAAN	9,495	9,224	271	2.9	OLD LYME	4,036	3,934	102	2.5
NEW FAIRFIELD	7,011	6,788	223	3.2	OLD SAYBROOK	5,739	5,604	135	2.4
NEW MILFORD	15,840	15,333	507	3.2	PLAINVILLE	10,428	10,068	360	3.5
NEWTOWN	14,901	14,498	403	2.7	PORTLAND	5,137	4,987	150	2.9
NORWALK	54,515	52,776	1,739	3.2	ROCKY HILL	11,340	10,996	344	3.0
REDDING	4,352	4,207	145	3.3	DEEP RIVER	2,628	2,545	83	3.2
RIDGEFIELD	12,579	12,239	340	2.7	SIMSBURY	13,270	12,917	353	2.7
SHERMAN	2,052	1,997	55	2.7	SOMERS	5,011	4,862	149	3.0
STAMFORD	82,421	79,898	2,523	3.1	SOUTHINGTON	24,679	24,002	677	2.7
STRATFORD	29,360	28,224	1,136	3.9	SOUTH WINDSOR	14,400	13,985	415	2.9
TRUMBULL	18,925	18,337	588	3.1	STAFFORD	6,225	6,001	224	3.6
WESTON	5,424	5,286	138	2.5	SUFFIELD	8,040	7,808	232	2.9
WESTPORT	13,047	12,667	380	2.9	TOLLAND	8,426	8,204	222	2.6
WILTON	9,937	9,683	254	2.6	VERNON	16,875	16,243	632	3.7
HARTFORD-WEST HARTFORD-EAST HARTFORD					WESTBROOK	3,950	3,838	112	2.8
	616,438	595,116	21,322	3.5	WEST HARTFORD	34,817	33,876	941	2.7
ANDOVER	1,845	1,797	48	2.6	WETHERSFIELD	14,886	14,462	424	2.8
AVON	9,678	9,412	266	2.7	WILLINGTON	2,942	2,856	86	2.9
BERLIN	11,559	11,207	352	3.0	WINDSOR	16,650	16,068	582	3.5
BLOOMFIELD	11,689	11,272	417	3.6	WINDSOR LOCKS	7,236	6,984	252	3.5
BOLTON	2,728	2,650	78	2.9	NEW HAVEN				
CANTON	5,100	4,942	158	3.1		318,942	308,095	10,847	3.4
CHESTER	1,927	1,871	56	2.9	BETHANY	3,384	3,306	78	2.3
CLINTON	7,778	7,591	187	2.4	BRANFORD	16,568	16,069	499	3.0
COLUMBIA	2,771	2,688	83	3.0	EAST HAVEN	16,273	15,684	589	3.6
COVENTRY	6,574	6,365	209	3.2	GUILFORD	11,493	11,178	315	2.7
CROMWELL	7,468	7,201	267	3.6	HAMDEN	34,741	33,606	1,135	3.3
DURHAM	4,468	4,373	95	2.1	MADISON	9,637	9,389	248	2.6
EAST GRANBY	2,735	2,660	75	2.7	MERIDEN	32,545	31,187	1,358	4.2
EAST HADDAM	4,654	4,506	148	3.2	MILFORD	32,640	31,727	913	2.8
EAST HAMPTON	7,045	6,818	227	3.2	NEW HAVEN	72,176	69,333	2,843	3.9
EAST HARTFORD	26,514	25,261	1,253	4.7	NORTH BRANFORD	7,689	7,435	254	

## LABOR FORCE CONCEPTS

The **civilian labor force** comprises all state residents age 16 years and older classified as employed or unemployed in accordance with criteria described below. Excluded are members of the military and persons in institutions (correctional and mental health, for example).

The **employed** are all persons who did any work as paid employees or in their own business during the survey week, or who have worked 15 hours or more as unpaid workers in an enterprise operated by a family member. Persons temporarily absent from a job because of illness, bad weather, strike or for personal reasons are also counted as employed whether they were paid by their employer or were seeking other jobs. The **unemployed** are all persons who did not work, but were available for work during the survey week (except for temporary illness) and made specific efforts to find a job in the prior four weeks. Persons waiting to be recalled to a job from which they had been laid off need not be looking for work to be classified as unemployed.

# LABOR FORCE ESTIMATES BY TOWN

Town

(By Place of Residence - Not Seasonally Adjusted)

APRIL 2025

LMA/TOWNS	LABOR FORCE	EMPLOYED	UNEMPLOYED	%	LMA/TOWNS	LABOR FORCE	EMPLOYED	UNEMPLOYED	%
<b>NORWICH-NEW LONDON-WILLIMANTIC</b>					<b>TORRINGTON-NORTHWEST</b>				
	<b>143,819</b>	<b>139,161</b>	<b>4,658</b>	<b>3.2</b>		<b>46,597</b>	<b>45,059</b>	<b>1,538</b>	<b>3.3</b>
BOZRAH	1,397	1,351	46	3.3	BARKHAMSTED	2,088	2,034	54	2.6
COLCHESTER	8,663	8,391	272	3.1	BURLINGTON	5,421	5,264	157	2.9
EAST LYME	9,355	9,106	249	2.7	CANAAN	572	554	18	3.1
FRANKLIN	983	944	39	4.0	COLEBROOK	820	801	19	2.3
GRISWOLD	6,631	6,406	225	3.4	CORNWALL	862	845	17	2.0
GROTON	17,984	17,470	514	2.9	GOSHEN	1,909	1,855	54	2.8
LEBANON	3,947	3,844	103	2.6	HARTLAND	1,153	1,124	29	2.5
LEDYARD	8,039	7,790	249	3.1	HARWINTON	3,257	3,161	96	2.9
LISBON	2,112	2,050	62	2.9	KENT	1,438	1,396	42	2.9
MONTVILLE	9,712	9,441	271	2.8	LITCHFIELD	4,503	4,381	122	2.7
NEW LONDON	13,704	13,201	503	3.7	MORRIS	1,283	1,240	43	3.4
NORTH STONINGTON	2,791	2,717	74	2.7	NEW HARTFORD	3,990	3,878	112	2.8
NORWICH	20,336	19,561	775	3.8	NORFOLK	857	829	28	3.3
PRESTON	2,450	2,367	83	3.4	NORTH CANAAN	1,448	1,407	41	2.8
SALEM	2,284	2,225	59	2.6	ROXBURY	1,395	1,361	34	2.4
SPRAGUE	1,610	1,550	60	3.7	SALISBURY	2,028	1,977	51	2.5
STONINGTON	9,725	9,413	312	3.2	SHARON	1,606	1,569	37	2.3
WATERFORD	10,339	10,031	308	3.0	TORRINGTON	19,700	18,961	739	3.8
WINDHAM	11,757	11,303	454	3.9	WARREN	735	712	23	3.1
					WASHINGTON	2,023	1,959	64	3.2
					WINCHESTER	5,418	5,212	206	3.8
<b>PUTNAM-NORTHEAST</b>					<b>WATERBURY-SHELTON</b>				
	<b>51,555</b>	<b>49,700</b>	<b>1,855</b>	<b>3.6</b>		<b>242,293</b>	<b>232,792</b>	<b>9,501</b>	<b>3.9</b>
ASHFORD	2,021	1,962	59	2.9	ANSONIA	10,637	10,198	439	4.1
BROOKLYN	4,178	4,036	142	3.4	BEACON FALLS	3,622	3,502	120	3.3
CANTERBURY	2,737	2,654	83	3.0	BETHLEHEM	1,833	1,771	62	3.4
CHAPLIN	1,305	1,264	41	3.1	BRISTOL	35,019	33,750	1,269	3.6
EASTFORD	939	903	36	3.8	CHESHIRE	14,303	13,898	405	2.8
HAMPTON	915	892	23	2.5	DERBY	6,697	6,409	288	4.3
KILLINGLY	9,179	8,788	391	4.3	MIDDLEBURY	4,085	3,967	118	2.9
PLAINFIELD	8,306	8,007	299	3.6	NAUGATUCK	18,662	17,962	700	3.8
POMFRET	2,318	2,258	60	2.6	OXFORD	7,296	7,089	207	2.8
PUTNAM	4,861	4,681	180	3.7	PLYMOUTH	6,701	6,440	261	3.9
SCOTLAND	825	792	33	4.0	PROSPECT	4,915	4,774	141	2.9
STERLING	1,737	1,660	77	4.4	SEYMOUR	9,631	9,316	315	3.3
THOMPSON	5,619	5,408	211	3.8	SHELTON	23,027	22,279	748	3.2
UNION	424	405	19	4.5	SOUTHBURY	10,068	9,725	343	3.4
VOLUNTOWN	1,558	1,517	41	2.6	THOMASTON	4,438	4,286	152	3.4
WOODSTOCK	4,633	4,473	160	3.5	WATERBURY	53,687	50,614	3,073	5.7
					WATERTOWN	12,692	12,306	386	3.0
					WOLCOTT	9,635	9,319	316	3.3
					WOODBURY	5,346	5,187	159	3.0
<b>Not Seasonally Adjusted:</b>					<p>For the sake of simplicity, the federal Hartford-West Hartford-East Hartford area is referred to in Connecticut DOL publications as the Hartford LMA. All Labor Market Areas (LMAs) in Connecticut except two are federally designated areas for developing labor statistics. The two nonfederal areas are Torrington-Northwest LMA and Putnam-Northeast LMA.</p>				
CONNECTICUT	1,955,400	1,888,200	67,200	3.4					
UNITED STATES	170,622,000	164,043,000	6,580,000	3.9	<b>Seasonally Adjusted:</b>				
CONNECTICUT	1,960,200	1,888,000	72,200	3.7	CONNECTICUT	1,960,200	1,888,000	72,200	3.7
UNITED STATES	171,109,000	163,944,000	7,165,000	4.2	UNITED STATES	171,109,000	163,944,000	7,165,000	4.2

## LABOR FORCE CONCEPTS (Continued)

The **unemployment rate** represents the number unemployed as a percent of the civilian labor force.

With the exception of those persons temporarily absent from a job or waiting to be recalled to one, persons with no job and who are not actively looking for one are counted as "not in the labor force".

Over the course of a year, the size of the labor force and the levels of employment undergo fluctuations due to such seasonal events as changes in weather, reduced or expanded production, harvests, major holidays and the opening and closing of schools. Because these seasonal events follow a regular pattern each year, their influence on statistical trends can be eliminated by adjusting the monthly statistics. **Seasonal Adjustment** makes it easier to observe cyclical and other nonseasonal developments.



# HOUSING PERMIT ACTIVITY BY TOWN

TOWN	APR 2025	YR TO DATE 2025	2024	TOWN	APR 2025	YR TO DATE 2025	2024	TOWN	APR 2025	YR TO DATE 2025	2024
Andover	0	0	0	Griswold	1	3	2	Preston	1	2	1
Ansonia	1	4	1	Groton	3	3	1	Prospect	0	3	0
Ashford	0	0	0	Guilford	3	14	3	Putnam	0	0	1
Avon	1	4	2	Haddam	2	6	1	Redding	1	2	1
Barkhamsted	0	2	1	Hamden	4	20	0	Ridgefield	0	2	1
Beacon Falls	1	2	1	Hampton	1	1	0	Rocky Hill	0	0	0
Berlin	3	17	1	Hartford	0	12	11	Roxbury	2	3	1
Bethany	0	0	1	Hartland	0	0	1	Salem	0	2	0
Bethel	14	43	6	Harwinton	1	9	1	Salisbury	0	0	0
Bethlehem	1	1	0	Hebron	2	5	1	Scotland	0	1	0
Bloomfield	0	24	0	Kent	1	3	1	Seymour	0	4	0
Bolton	0	0	0	Killingly	3	7	5	Sharon	0	2	1
Bozrah	0	1	0	Killingworth	1	5	1	Shelton	3	7	0
Branford	0	9	1	Lebanon	0	3	2	Sherman	1	3	1
Bridgeport	0	13	5	Ledyard	0	0	3	Simsbury	1	36	1
Bridgewater	0	2	1	Lisbon	0	2	1	Somers	1	2	0
Bristol	0	5	3	Litchfield	0	1	0	South Windsor	1	4	2
Brookfield	1	10	1	Lyme	0	1	1	Southbury	1	5	1
Brooklyn	5	11	1	Madison	0	2	1	Southington	10	23	19
Burlington	4	7	1	Manchester	0	8	2	Sprague	0	1	0
Canaan	0	0	0	Mansfield	0	0	31	Stafford	3	3	1
Canterbury	1	2	0	Marlborough	0	0	0	Stamford	170	187	4
Canton	3	5	1	Meriden	2	3	1	Sterling	1	8	1
Chaplin	0	0	0	Middlebury	2	7	0	Stonington	4	13	3
Cheshire	10	28	10	Middlefield	1	3	1	Stratford	0	1	0
Chester	0	0	0	Middletown	2	5	2	Suffield	2	2	2
Clinton	0	7	1	Milford	10	36	9	Thomaston	0	0	0
Colchester	2	5	2	Monroe	3	5	2	Thompson	1	3	1
Colebrook	0	0	0	Montville	1	4	2	Tolland	2	13	0
Columbia	0	1	0	Morris	1	2	1	Torrington	1	2	1
Cornwall	0	0	0	Naugatuck	1	5	1	Trumbull	1	2	1
Coventry	2	9	2	New Britain	1	1	0	Union	0	0	0
Cromwell	1	4	1	New Canaan	0	8	7	Vernon	0	1	0
Danbury	3	12	1	New Fairfield	0	0	0	Voluntown	0	2	1
Darien	1	7	2	New Hartford	1	2	1	Wallingford	2	7	2
Deep River	0	0	1	New Haven	86	192	89	Warren	1	1	0
Derby	0	34	14	New London	1	2	0	Washington	0	1	1
Durham	1	3	0	New Milford	4	16	4	Waterbury	1	1	5
East Granby	6	7	1	Newington	0	4	1	Waterford	11	15	0
East Haddam	1	6	3	Newtown	0	13	1	Watertown	0	6	6
East Hampton	4	7	2	Norfolk	0	0	1	West Hartford	79	212	1
East Hartford	0	2	1	North Branford	0	4	0	West Haven	2	3	3
East Haven	0	0	7	North Canaan	1	1	0	Westbrook	0	4	1
East Lyme	8	19	1	North Haven	1	2	0	Weston	0	4	0
East Windsor	1	1	4	North Stonington	11	16	0	Westport	11	23	1
Eastford	1	1	1	Norwalk	27	107	1	Wethersfield	1	2	1
Easton	1	1	1	Norwich	0	7	0	Willington	0	2	0
Ellington	1	8	1	Old Lyme	11	18	1	Wilton	0	0	0
Enfield	0	1	0	Old Saybrook	6	11	6	Winchester	0	0	0
Essex	0	1	0	Orange	0	0	0	Windham	1	1	1
Fairfield	3	13	94	Oxford	1	4	1	Windsor	3	5	2
Farmington	0	4	1	Plainfield	3	8	0	Windsor Locks	0	1	0
Franklin	1	3	1	Plainville	0	0	1	Wolcott	2	6	2
Glastonbury	3	6	2	Plymouth	0	2	1	Woodbridge	3	12	3
Goshen	3	5	2	Pomfret	1	3	2	Woodbury	1	3	2
Granby	0	2	87	Portland	1	3	1	Woodstock	1	3	1
Greenwich	6	34	4								

## **BUSINESS STARTS AND TERMINATIONS**

Registrations and terminations of business entities as recorded with the U.S. Census Bureau and the Connecticut Department of Labor (DOL) are an indication of new business formation and activity. DOL business starts include new employers which have become liable for unemployment insurance taxes during the quarter, as well as new establishments opened by existing employers. DOL business terminations are those accounts discontinued due to inactivity (no employees) or business closure, and accounts for individual business establishments that are closed by still active employers. The Census's business formations include limited liability companies, limited liability partnerships, and foreign-owned (out-of-state) and domestic-owned (in-state) corporations.

## **CONSUMER PRICE INDEX**

The Consumer Price Index (CPI), computed and published by the U.S. Bureau of Labor Statistics, is a measure of the average change in prices over time in a fixed market basket of goods and services. It is based on prices of food, clothing, shelter, fuels, transportation fares, charges for doctors' and dentists' services, drugs and other goods and services that people buy for their day-to-day living. The Northeast region is comprised of the New England states, New York, New Jersey and Pennsylvania.

## **EMPLOYMENT COST INDEX**

The Employment Cost Index (ECI) covers both wages and salaries and employer costs for employee benefits for all occupations and establishments in both the private nonfarm sector and state and local government. The ECI measures employers' labor costs free from the influences of employment shifts among industries and occupations. The base period for all data is December 2005 when the ECI is 100.

## **GAMING DATA**

Indian Gaming Payments are amounts received by the State as a result of the slot compact with the two Federally recognized tribes in Connecticut, which calls for 25 percent of net slot receipts to be remitted to the State. Indian Gaming Slots are the total net revenues from slot machines only received by the two Federally recognized Indian tribes.

## **HOURS AND EARNINGS ESTIMATES**

Production worker earnings and hours estimates include full- and part-time employees working within manufacturing industries. Hours worked and earnings data are computed based on payroll figures for the week including the 12th of the month. Average hourly earnings are affected by such factors as premium pay for overtime and shift differential as well as changes in basic hourly and incentive rates of pay. Average weekly earnings are the product of weekly hours worked and hourly earnings. These data are developed in cooperation with the U.S. Department of Labor, Bureau of Labor Statistics.

## **INITIAL CLAIMS**

Average weekly initial claims are calculated by dividing the total number of new claims for unemployment insurance received in the month by the number of weeks in the month. A minor change in methodology took effect with data published in the March 1997 issue of the DIGEST. Data have been revised back to January 1980.

## **INSURED UNEMPLOYMENT RATE**

Primarily a measure of unemployment insurance program activity, the insured unemployment rate is the 13-week average of the number of people claiming unemployment benefits divided by the number of workers covered by the unemployment insurance system.

## **LABOR FORCE ESTIMATES**

Labor force estimates are a measure of the work status of people who live in Connecticut. Prepared under the direction of the U.S. Bureau of Labor Statistics, the statewide estimates are the product of a signal-plus noise model, which uses results from the Current Population Survey (CPS), a monthly survey of Connecticut households, counts of claimants for unemployment benefits, and establishment employment estimates. The 2015 LAUS Redesign includes improved time-series models for the census divisions, states, select substate areas, and the balances of those states; an improved real-time benchmarking procedure to the national Current Population Survey (CPS) estimates; an improved smoothed seasonal adjustment procedure; and improved treatment of outliers. Non-modeled area estimation improvements include: updated Dynamic Residency Ratios (DRR); more accurate estimates for all-other employment; more accurate estimation of agricultural employment; and improved estimation of non-covered agricultural unemployment. Handbook estimation is now done at the city/town level instead of at the Labor Market Area (LMA) level in Connecticut, which better reflects local conditions. The Redesign also introduces estimation inputs from the American Community Survey (ACS) to replace inputs that were previously obtained from the decennial census long-form survey. Labor force data, reflecting persons employed by place of residence, are not directly comparable to the place-of-work industry employment series. In the labor force estimates, workers involved in labor disputes are counted as employed. The labor force data also includes agricultural workers, unpaid family workers, domestics and the self-employed. Because of these conceptual differences, total labor force employment is almost always different from nonfarm wage and salary employment.

## **LABOR MARKET AREAS**

All Labor Market Areas (LMAs) in Connecticut except two are federally-designated areas for developing labor statistics. For the sake of simplicity, the federal Hartford-West Hartford-East Hartford area is referred to in Connecticut DOL publications as the Hartford LMA. The two nonfederal areas are Torrington-Northwest LMA and Putnam-Northeast LMA. Industry employment and labor force data estimates contained in Connecticut Department of Labor publications are prepared following the same statistical procedures developed by the U.S. Department of Labor, Bureau of Labor Statistics, whether for federally designated or state-determined areas.

## **NONFARM EMPLOYMENT ESTIMATES**

Nonfarm employment estimates are derived from a survey of businesses to measure *jobs* by industry. The estimates include all full- and part-time wage and salary employees who worked during or received pay for the pay period which includes the 12th of the month. Excluded from these estimates are proprietors, self-employed workers, private household employees and unpaid family workers. In some cases, due to space constraints, all industry estimates are not shown. These data are developed in cooperation with the U.S. Department of Labor, Bureau of Labor Statistics.

## **UI COVERED WAGES**

UI covered wages is the total amount paid to those employees who are covered under the Connecticut's Unemployment Insurance (UI) law for services performed during the quarter. The fluctuations in the 1992-93 period reflect the effect of the changes in the tax law and the massive restructuring in the state's economy.



# ECONOMIC INDICATORS AT A GLANCE

(Percent change from prior year; see pages 5-8 for reference months or quarters)

Leading General Drift Indicator.....	4.1	CT Mfg. Production Index.....	3.2	Occupancy Rate.....	1.2
Coincident General Drift Indicator.....	1.3	Production Worker Hours.....	-0.8	Tourism Website Visitors.....	30.4
Connecticut Real GDP.....	1.8	Industrial Electricity Sales.....	2.4	Air Passenger Count.....	5.0
United States Real GDP.....	2.5	<b>Personal Income</b> .....	4.7	Gaming Slots.....	-2.1
New England Real GDP.....	2.6	<b>UI Covered Wages</b> .....	4.9	<b>Employment Cost Index (U.S.)</b>	
Connecticut PCPI.....	4.0			Total.....	3.4
United States PCPI.....	4.1	<b>Business Activity</b>		Wages & Salaries.....	3.4
New England PCPI.....	4.3	New Housing Permits.....	11.5	Benefit Costs.....	3.5
Phil. Fed's CT Coincident Index....	1.3	Electricity Sales.....	1.3	<b>Consumer Prices</b>	
Phil. Fed's US Coincident Index...	2.3	Construction Contracts Index.....	-0.3	U.S. City Average.....	2.3
		New Auto Registrations.....	14.6	Northeast Region.....	3.1
		Exports.....	3.2	NY-Newark-Jersey City.....	3.9
		S&P 500: Monthly Close.....	10.6	Boston-Cambridge-Newton...	2.5
<b>Total Nonfarm Employment.....</b>	0.7	<b>Business Starts</b>		<b>Interest Rates</b>	
Labor Force.....	1.2	Business Formation.....	7.2	Prime.....	-1.00 *
Employed.....	0.7	Dept. of Labor.....	-23.8	Conventional Mortgage.....	-0.26 *
Unemployed.....	18.8	<b>Business Terminations</b>			
<b>Unemployment Rate</b> .....	0.6 *	Dept. of Labor.....	-23.8		
Labor Force Participation Rate...	0.3 *	<b>State Revenues</b> .....	10.2		
Employment-Population Ratio...	-0.1 *	Corporate Tax.....	-30.4		
<b>Average Weekly Initial Claims..</b>	-0.1	Personal Income Tax.....	20.8		
<b>Avg Insured Unempl. Rate</b> .....	-0.05 *	Real Estate Conveyance Tax..	17.9		
<b>U-6 Rate</b> .....	0.2 *	Sales & Use Tax.....	-19.5		
<b>Prod. Worker Avg Wkly Hrs</b> .....	3.1	Gaming Payments.....	-0.6		
<b>PW Avg Hourly Earnings</b> .....	-5.1				
<b>PW Avg Weekly Earnings</b> .....	-2.2				

\*Percentage point change  
 \*\*Less than 0.05 percent  
 NA = Not Available

## THE CONNECTICUT ECONOMIC DIGEST

June 2025

### THE CONNECTICUT

## ECONOMIC DIGEST

A publication of  
 The Connecticut Departments of Labor



Mailing address:

**Connecticut Economic Digest**  
**Connecticut Department of Labor**  
**Office of Research**  
**200 Folly Brook Boulevard**  
**Wethersfield, CT 06109-1114**

The Connecticut Economic Digest  
 is available on the internet at:  
<http://www.ctdol.state.ct.us/lmi>

### DO YOU WANT TO BE NOTIFIED BY EMAIL WHEN THE DIGEST IS PUBLISHED EACH MONTH?

Simply email to [listserv@list.ct.gov](mailto:listserv@list.ct.gov) with only the following in the body of the message, leave subject blank:  
**SUBSCRIBE DOL-CTEconomicDigest your\_name**  
 (type in your name where it says your\_name)

If you wish to have your name removed from our mailing list, please check here and return this page (or a photocopy) to the address at left.

If your address has changed, please check here, make the necessary changes to your address label and return this page to the address at left.

If you receive more than one copy of this publication, please check here and return this page from the duplicate copy to the address at left.