

Vol 27 No 12 A joint publication of Connecticut Department of Labor & Connecticut Department of Economic and Community Development

Leading General Drift Indicator.....	5.5	CT Mfg. Production Index.....	1.8
Coincident General Drift Indicator.....	1.5	Production Worker Hours.....	11.0
Connecticut Real GDP.....	3.9	Industrial Electricity Sales.....	-5.2
United States Real GDP.....	3.5	Personal Income	3.4
New England Real GDP.....	4.8	UI Covered Wages	8.6
Connecticut PCPI.....	3.1	Business Activity	
United States PCPI.....	3.1	New Housing Permits.....	22.0
New England PCPI.....	2.1	Electricity Sales.....	-9.5
Phil. Fed's CT Coincident Index.....	4.4	Construction Contracts Index.....	10.4
Phil. Fed's US Coincident Index.....	4.6	New Auto Registrations.....	0.3
		Exports.....	6.0
		S&P 500: Monthly Close.....	-15.9
Total Nonfarm Employment	2.2	Business Starts	
Labor Force.....	2.3	Secretary of the State.....	NA
Employed.....	3.6	Dept. of Labor.....	-11.6
Unemployed.....	-19.3	Business Terminations	
Unemployment Rate	-1.1 *	Secretary of the State.....	NA
Labor Force Participation Rate.....	1.0 *	Dept. of Labor.....	12.8
Employment-Population Ratio.....	1.8 *	State Revenues	NA
Average Weekly Initial Claims ..	-0.4	Corporate Tax.....	NA
Avg Insured Unempl. Rate	-1.37 *	Personal Income Tax.....	NA
U-6 Rate	-3.5 *	Real Estate Conveyance Tax.....	NA
Prod. Worker Avg Wkly Hrs	5.4	Sales & Use Tax.....	NA
PW Avg Hourly Earnings	-1.2	Gaming Payments.....	-8.1
PW Avg Weekly Earnings	4.1		

CONNECTICUT
 Help Wanted OnLine® Data Series

Weekly New HWOL Job Ads through 12/10/22



Total postings in Connecticut was 91,072 in November 2022, down 2% from October 2022.

Industry Sectors with the most job postings were **Health Care and Social Assistance** (18,481 postings), **Retail Trade** (9,317 posting), **Finance & Insurance** (8,358 postings), and **Manufacturing** (8,334 postings).

Occupations with the most postings were **Registered Nurses** (4,757 postings), **Retail Salespersons** (3,170 postings), **Supervisors of Retail Sales Workers** (1,886 postings), and **Wholesale and Manufacturing Sales Representatives** (1,830).

Workforce Area	November Total Ads	Industry Sector With Most Ads	Ads	Occupation With Most Ads	Ads
Eastern	7,438	Health Care & Soc. Asst.	1,556	Registered Nurses	358
North Central	31,242	Health Care & Soc. Asst.	5,285	Registered Nurses	1,364
Northwest	10,178	Health Care & Soc. Asst.	2,363	Registered Nurses	687
South Central	17,003	Health Care & Soc. Asst.	4,394	Registered Nurses	1,233
Southwest	20,271	Health Care & Soc. Asst.	4,289	Registered Nurses	967

For more information about our services, visit any American Job Center office.

Bridgeport PH: 203-455-2700
 2 Lafayette Square TTY: 203-455-2714
 (GPS: 350 Fairfield Avenue)

Hamden PH: 203-859-3200
 37 Marne Street TTY: 203-859-3313

Hartford PH: 860-256-3700
 3580 Main Street TTY: 860-256-3514

Montville PH: 860-848-5200
 601 Norwich New London Tpke., Suite 1 TTY: 860-848-5223

New Haven PH: 203-624-1493
 560 Ella T. Grasso Blvd

Waterbury PH: 203-437-3380
 249 Thomaston Avenue TTY: 203-437-3394

Satellite Offices

* Not all services are available at these sites*

Ansonia PH: 203-397-6647
 4 Fourth Street

Bristol PH: 860-899-3620
 430 North Main Street

Danbury PH: 203-730-0451
 185 Main Street

Danielson PH: 860-774-4077
 560 Westcott Road

Derby PH: 203-734-3443
 101 Elizabeth Street

East Hartford PH: 860-929-3880
 417 Main Street

Enfield PH: 860-899-3514
 170 Elm Street

Manchester PH: 860-643-2222
 893 Main Street

Meriden PH: 203-238-3688
 87 West Main Street (2nd Floor)

Middletown PH: 860-347-7691
 272 South Main Street

New Britain PH: 860-899-3500
 260 Lafayette Street

Stamford PH: 203-353-1702
 141 Franklin Street, 2nd Floor

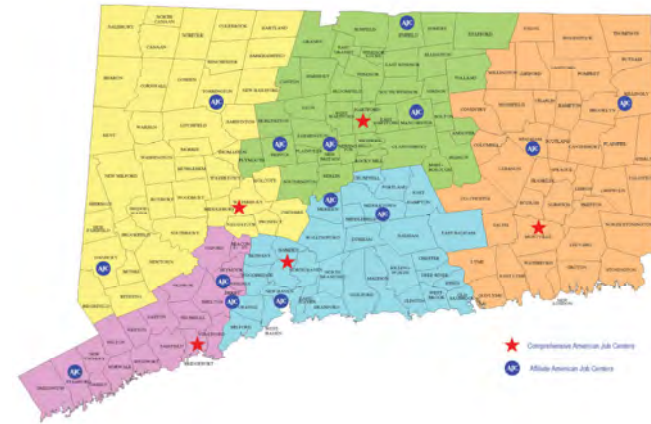
Torrington PH: 860-496-3500
 62 Commercial Blvd, Unit 1

Willimantic PH: 860-450-7603
 1320 Main Street, Tyler Square



STATE OF CONNECTICUT
LABOR MARKET INFORMATION

NOVEMBER 2022
AT-A-GLANCE



Connecticut Department of Labor
Office of Research

200 Folly Brook Boulevard

Wethersfield, CT 06109

860-263-6275

www.ct.gov/dol

dol.lmi@ct.gov



f www.facebook.com/ctlmi

t twitter.com/DOL_Research

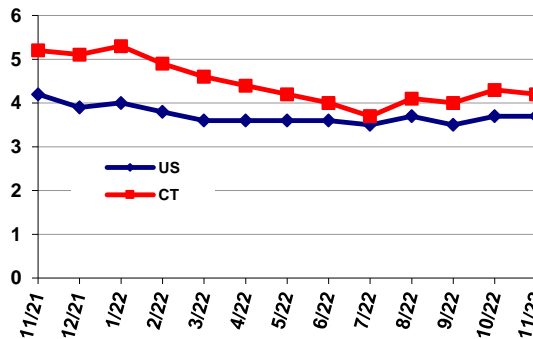
Labor Force Data (Seasonally Adjusted)

	Nov 2022	Nov 2021	Change NO.	Change %	Oct 2022
Connecticut					
Civilian Labor Force *	1,898.7	1,856.3	42.4	2.3	1,903.7
Employed	1,819.0	1,759.7	59.3	3.4	1,822.4
Unemployed	79.6	96.6	-17.0	-17.6	81.3
CT Unemployment Rate	4.2	5.2	-1.0	---	4.3
U.S. Unemployment Rate	3.7	4.2	-0.5	---	3.7

* Totals may not add up due to rounding

Unemployment Rate: Connecticut and U.S. (SA)

November 2021 - November 2022



Area Labor Force and Unemployment Rates (NSA)

Labor Market Area	Nov 2022P		Nov 2021R		Oct 2022P	
	LF	UR	LF	UR	LF	UR
CONNECTICUT	66,300	3.5	81,500	4.4	75,200	4.0
Bridgeport-Stamford	16,800	3.6	20,200	4.4	19,200	4.1
Danbury	3,100	3.0	3,800	3.7	3,500	3.3
Danielson-Northeast	1,500	3.4	1,800	4.1	1,600	3.7
Enfield	1,600	3.2	2,000	3.9	1,800	3.6
Hartford	21,400	3.4	26,700	4.3	24,100	3.9
New Haven	11,100	3.3	13,600	4.1	12,600	3.7
Norwich-New London	5,000	3.7	6,500	4.8	5,800	4.2
Torrington-Northwest	1,500	3.2	1,800	3.9	1,600	3.5
Waterbury	4,800	4.3	5,800	5.3	5,600	5.1

Unemployment Insurance Program Financial Data

	AWIC	AWIU	UBP	ECC
Sept 2022	2,838	17,245	\$23,330,613	\$435,966
Sept 2021	2,421	31,637	\$36,710,530	\$95,531

nsa
Average Weekly Benefit \$387

Maximum Weekly Benefit: \$685 plus \$15 for each dependent (up to 5)

Average Duration of Unemployment (9/21 - 9/22): 13.3 weeks

Nonfarm Employment by Industry (SA) (000s)

	Nov 2022	Nov 2021	Change #	Change %	Oct 2022
CONNECTICUT	1,672.8	1,636.3	36.5	2.2%	1,666.6
Goods Producing Industries					
Natural Res & Mining	1,672.8	1,636.3	36.5	2.2%	0.5
Construction	63.0	59.5	3.5	5.9%	63.2
Manufacturing	160.2	153.6	6.6	4.3%	160.9
Service Providing Industries					
Trade, Transp & Utilities	297.5	290.7	6.8	2.3%	298.1
Information	31.2	30.2	1.0	3.3%	31.0
Financial Activities	117.1	116.7	0.4	0.3%	117.3
Prof & Business Svcs	220.5	217.1	3.4	1.6%	218.2
Education & Health Svcs	341.8	336.1	5.7	1.7%	341.3
Leisure & Hospitality	150.4	141.8	8.6	6.1%	150.1
Other Services	60.5	60.2	0.3	0.5%	60.3
Government*	228.6	225.7	2.9	1.3%	225.7

* Includes Native American tribal government employment

Nonfarm Employment by Labor Market Area (SA)

Labor Market Area	Nov 2022	Nov 2021	Change #	Change %	Oct 2022 R
Bridgeport-Stamford-Norwalk	399,200	391,300	600	0.2%	398,600
Danbury	76,700	74,700	100	0.1%	76,600
Hartford	573,600	564,600	900	0.2%	572,700
New Haven	299,100	292,200	1,200	0.4%	297,900
Norwich-New London-Westerly	121,700	118,900	400	0.3%	121,300
Waterbury	66,000	65,400	0	0.0%	66,000

Hours and Earnings: All Employees/Mfg. Workers (NSA)

	Nov 2022	Nov 2021	Change #	Change %	Oct 2022
Private Industry All Employees					
Weekly Earnings	\$1,184.01	\$1,163.15	\$20.86	1.8%	\$1,203.05
Weekly Hours	33.8	34.1	-0.3	-0.9%	34.1
Hourly Earnings	\$35.03	\$34.11	\$0.92	2.7%	\$35.28
Manufacturing Workers					
Weekly Earnings	\$1,174.37	\$1,124.48	\$49.89	4.4%	\$1,156.90
Weekly Hours	41.6	39.4	2.2	5.6%	41.2
Hourly Earnings	\$28.23	\$28.54	(\$0.31)	-1.1%	\$28.08

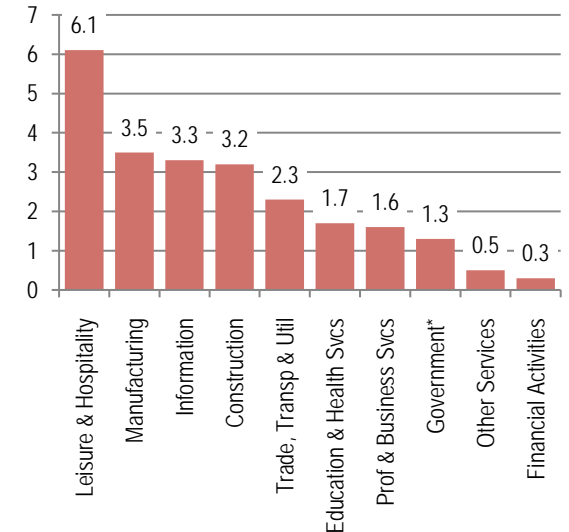
Per Capita Income

	Connecticut	United States
2021 Per Capita Income	\$82,082	\$63,444
2020 Per Capita Income	\$77,664	\$59,147
Net Change	\$4,418	\$4,297
% Change	5.7%	7.3%

Source: Bureau of Economic Analysis April 2022

Nonfarm Employment Net Job Change (Y/Y %)

November 2021 - November 2022



Statewide Employment Distribution

November 2022



Connecticut Initial Claims

